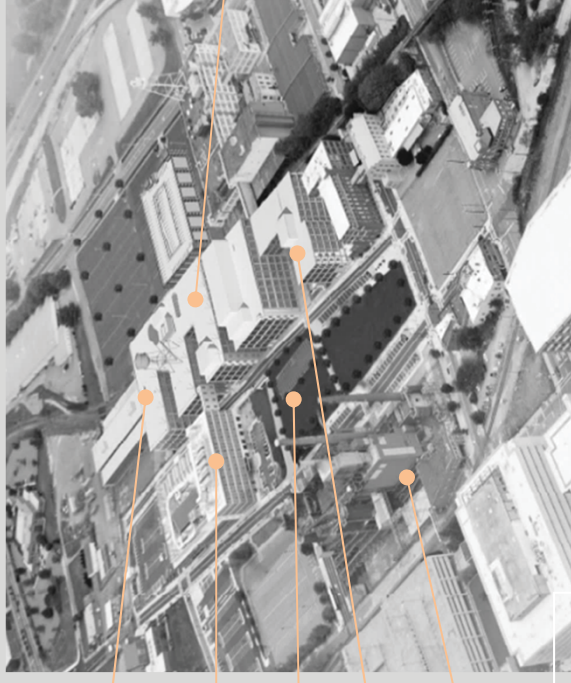
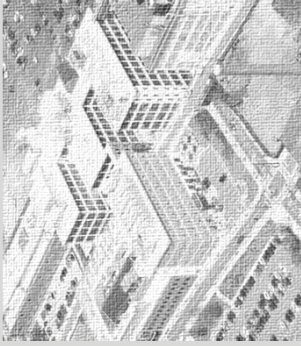


Project Description and Introduction

525@Vine, formerly known as Building 90 and part of the abandoned and massive RJ Reynolds Tobacco Co. manufacturing complex, represents Phase 2 of the historic rehabilitation and urban revitalization of the north district of the Wake Forest Innovation Quarter into a medical village. This 240,000 sf multi-tenant building houses multiple academic institutions from Wake Forest Medical Center, including the Public Health Sciences Department, the Physician Assistant Program, the Forsyth Tech Career Technology Program, YMCA, Flywheel (a shared workspace environment) and will lease to other medically oriented ventures. Federal and state tax credits fostered the renewal of this 1920's structure and the creation a five-story atrium, brilliantly lit with natural light and its signature LED suspended lights, meticulously detailed in industrial form. The building achieved LEED Platinum certification. The faithful restoration of the façade to its original built condition has enlivened the neighborhood and brilliantly lit interiors.



Aerial view of the former Reynolds manufacturing plant and Turkish 91 (now known as Wake Forest Biotech Place).

525@Vine Street
Research and Medical Village

Wake Forest Biotech Center

Innovation Park

Future Wake Forest School of Medicine

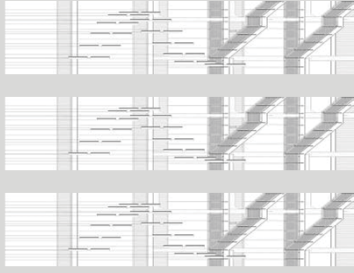
Bailey Power Plant – Future
Movie Theater and
Restaurant Center



North District of the "Wake Forest Innovation Quarter"

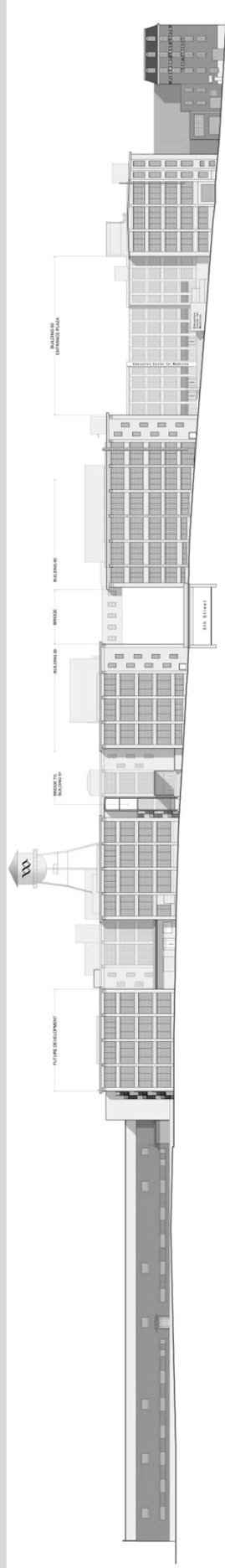
Location: Winston-Salem, NC
Name: 525@Vine

Photos: Tom Holdsworth Photography

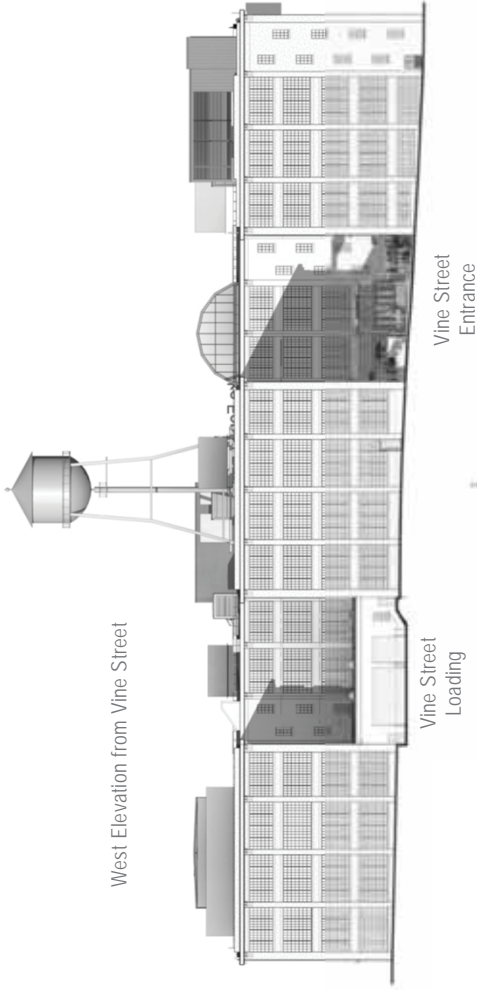


525@Vine

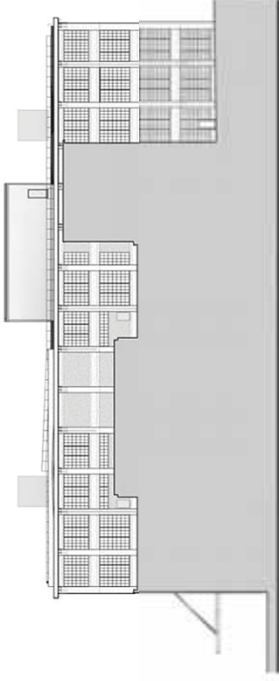
The Former RJ Reynolds Tobacco Factory Building 90 South Research Center and Medical Village Phase 2 of the Wake Forest Innovation Quarter Urban Redevelopment Master Plan



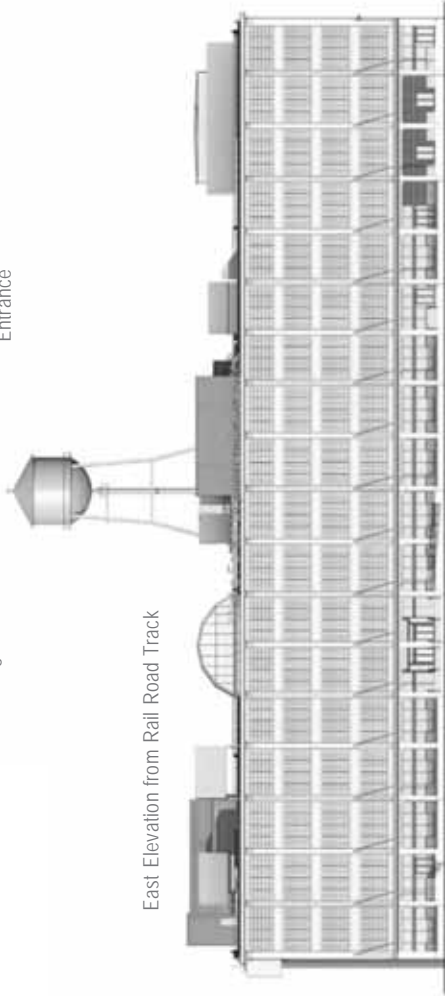
West Elevation from Vine Street



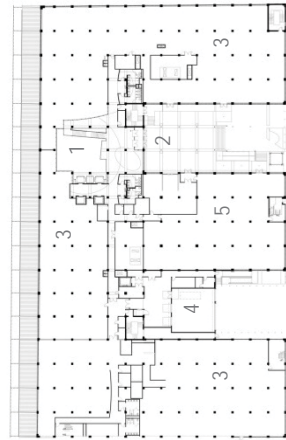
Partial North Elevation over Adjacent Building



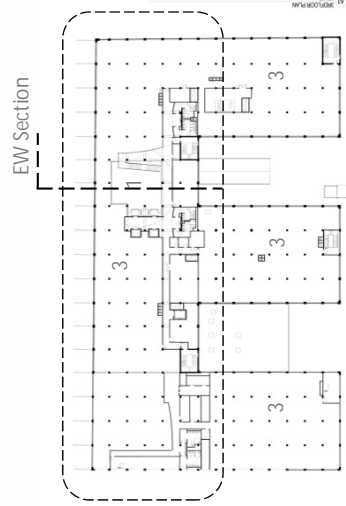
East Elevation from Rail Road Track



South Elevation from 5th Street



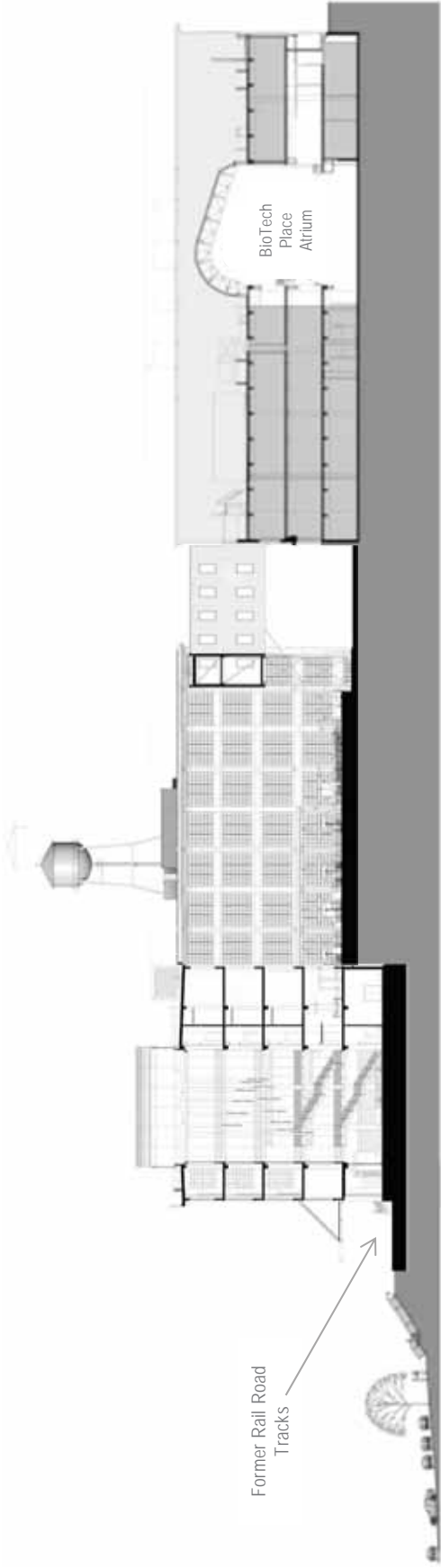
Vine Street Floor Plan (Level 2)



Typical Upper Floor Plan (Levels 3-5)

Floor Levels 0 and 1
Partial Plans - Similar / Not shown

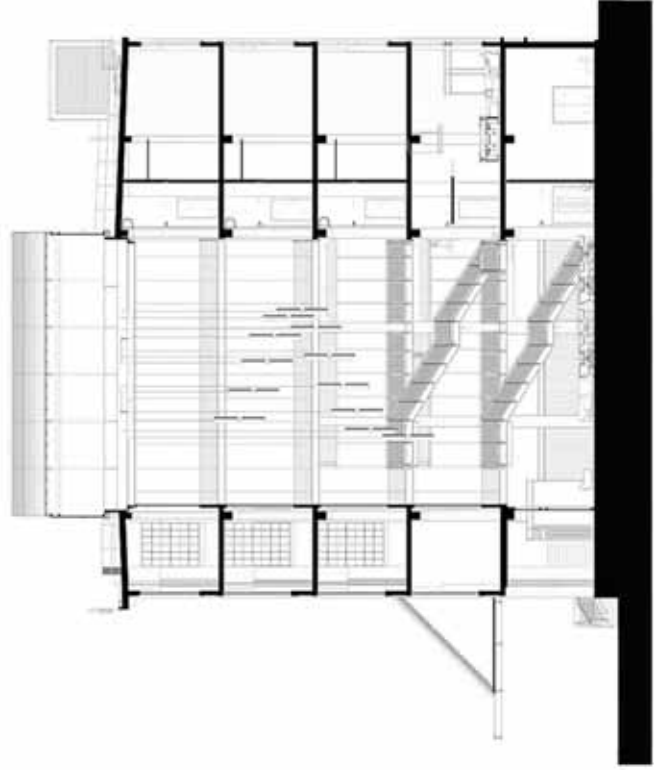
- Legend:
- 1 Atrium
 - 2 Entrance
 - 3 Office / Laboratories / Academic
 - 4 Service / Loading
 - 5 Retail



East West (EW) Section Looking South Through Atrium



Atrium View From Lobby



East West (EW) Section Looking South Through Atrium



View Street Entrance Courtyard

After

Before



Vine Street View to the West



View West from Entrance Courtyard



After



Before



Atrium Views



Vine Street Entrance Courtyard



Entrance Lobby at Level 2



Rail Track Dock Entrance Platform



Vine Street Entrance in Evening



Vine Street Courtyard



This new five-story atrium was added to create a tower of light, a transparent connection between the opposing entrances on the west and east sides (the railroad track and Vine Street – one level up), and to allow the building's history be told through this transparency and the expression of the exposed concrete frame and steel structures.

Clear frameless glazing systems were used to enclose the atrium so as to not impede views to the replica divided light systems at the exterior wall.

After



Before



The former industrial tobacco processing plant is over 400 feet long and is adjacent to a closed rail line that served the building. The former open covered dock canopy was restored and will serve as the entrance pathway for the tenant population and visitors.

The developer worked with the City of Winston-Salem to fund a "rails for trails" initiative that will create a bike and hiking trail along the abandoned tracks, passing by the western edge of 525@Vine.

After



Before



The development team worked with the National Park Service and North Carolina Historic Preservation office to return the glass façade to its original divided light configuration, using clear high performance insulated lights, and to maintain the former industrial appearance of the roof-scape.