



This house for an active family of five is located in an historic district, and is a study in changing a large collection of small traditional rooms into to a small collection of large modern ones, while knitting together a modern addition with the original historic structure.

Both parents work from home, and the integration of work and family life were key

elements of the program. On the first floor, the interior of the early 20th c. four-square house was entirely opened up by removing all interior partitions. The center of the house is truly the kitchen, open to and connecting the other living spaces. The cabinets extend to also incorporate storage, coat closets, and a centrally located home office cockpit.

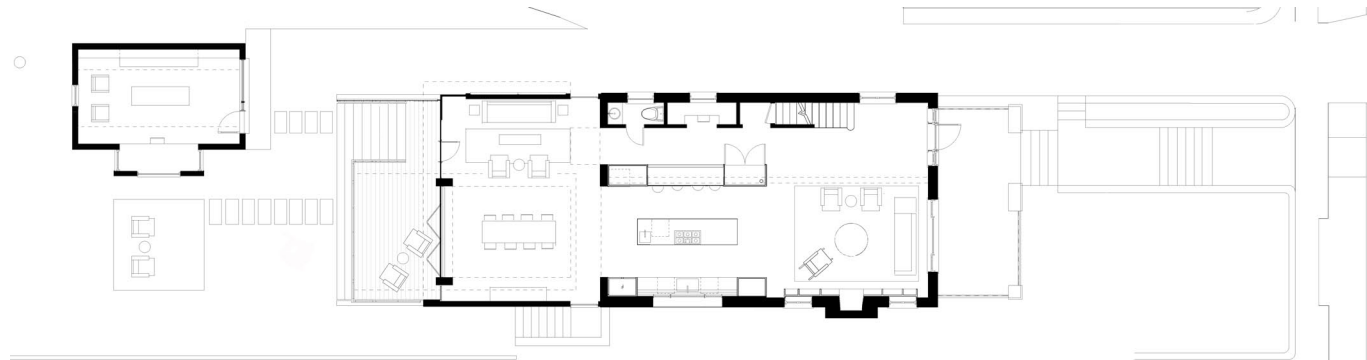
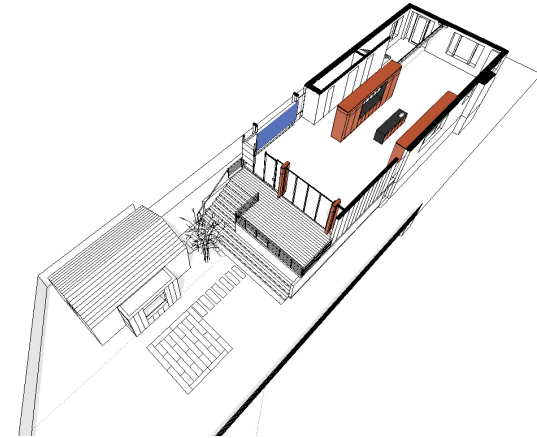
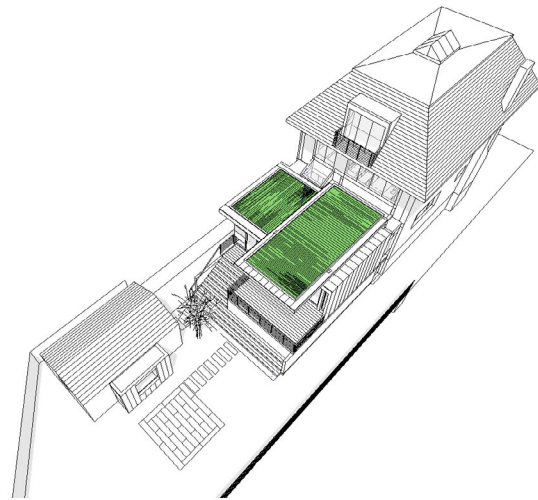
A much modified two-story sleeping porch was removed from the back of the house. A new zinc-clad one-and-one-half-story family room/dining room, with a green roof, was added, opening through operable glass walls to the garden beyond. It is now possible to stand at the front of the original house and look straight through to the garden some 55 feet away. In the garden, in the former garage, is a writer's studio.



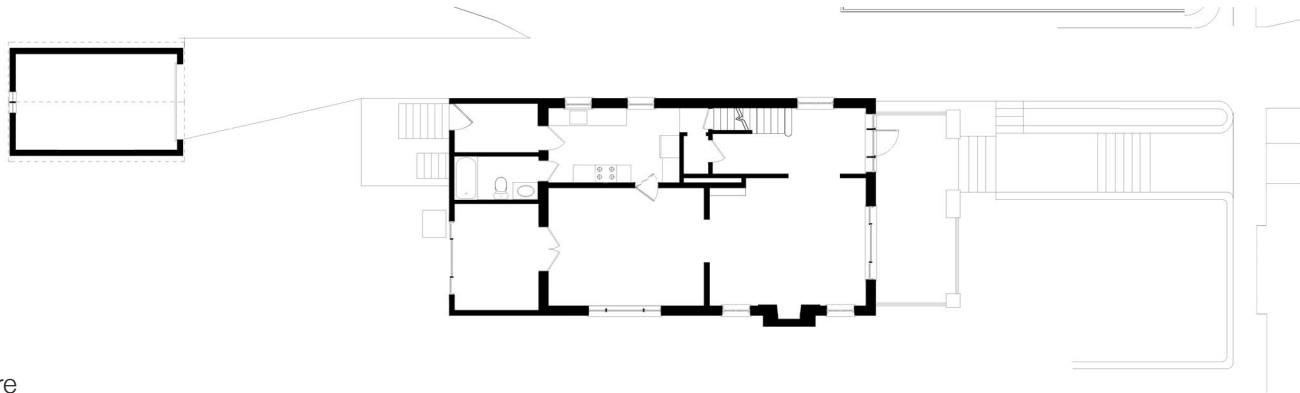








After



Before



Green roof

