

Chesapeake Bay House

Neavitt, Maryland

Residential

There is a pool on top. So are all of the exterior elements—decks, porches or terraces, as well as the mechanical systems.

The reason is simple. The site, a quiet cove on the Maryland's Eastern Shore, is subject to strict guidelines which protect the Chesapeake Bay. The allowable footprint for everything on the site — everything — is sized to the ruins of a previous house, long gone, but excavated, surveyed, and documented.

That original house was about the size of a double-wide trailer, so now it all is piled up, all fitting on deck—like a modern ark with 1664 SF of interior space.

Given the height and the weight to be supported — the pool weighs as much as six Toyota Priuses — the structure is made of cross-braced steel moment frames which impose themselves, and are celebrated, throughout the plan.

The open plan first floor has a wall of sliding doors which turn the interior into a porch. A winding stair rises to two stacked bedrooms and continues to the rooftop pool.

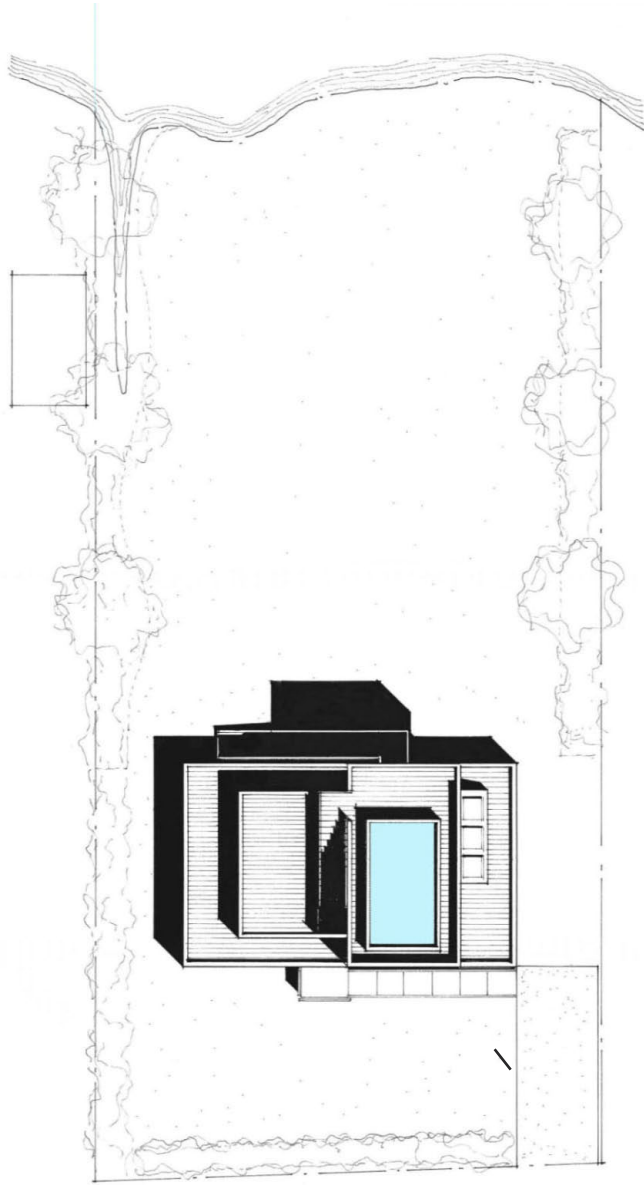
On the exterior, white cedar shingles and stainless steel will weather naturally. There is no paint or stain on the outside.

The interior is all white.

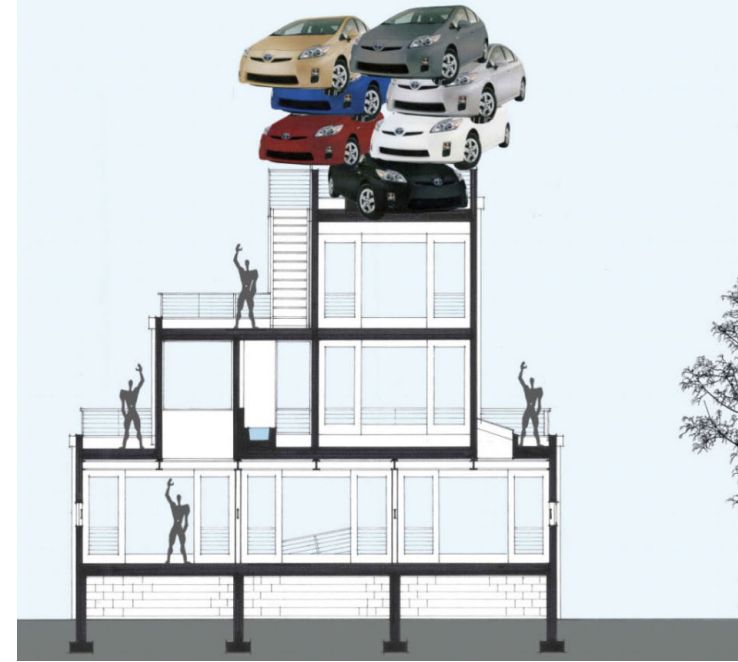




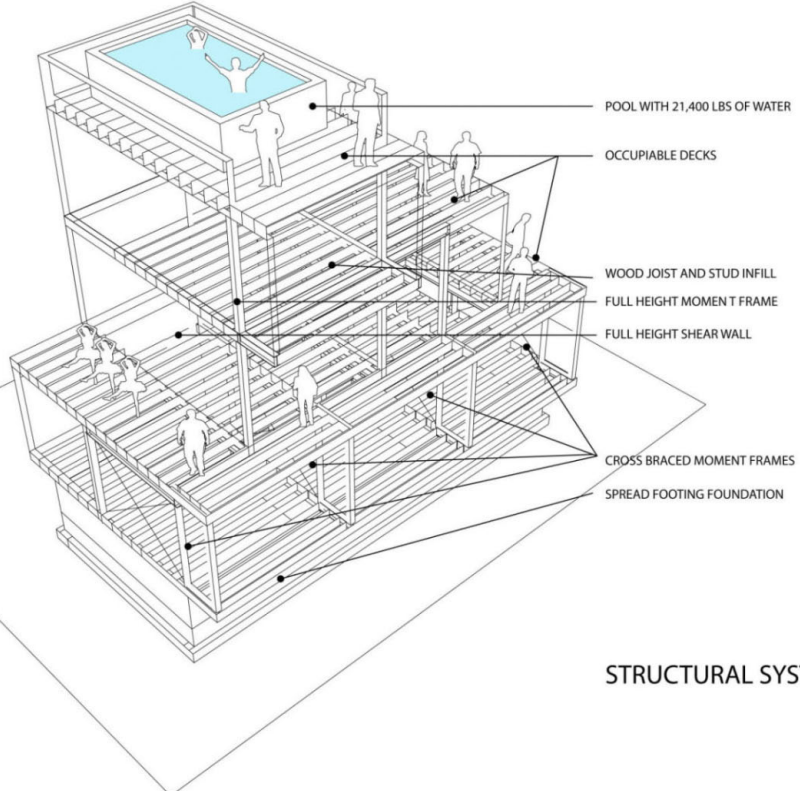




The pool weighs as much as six Toyota Priuses





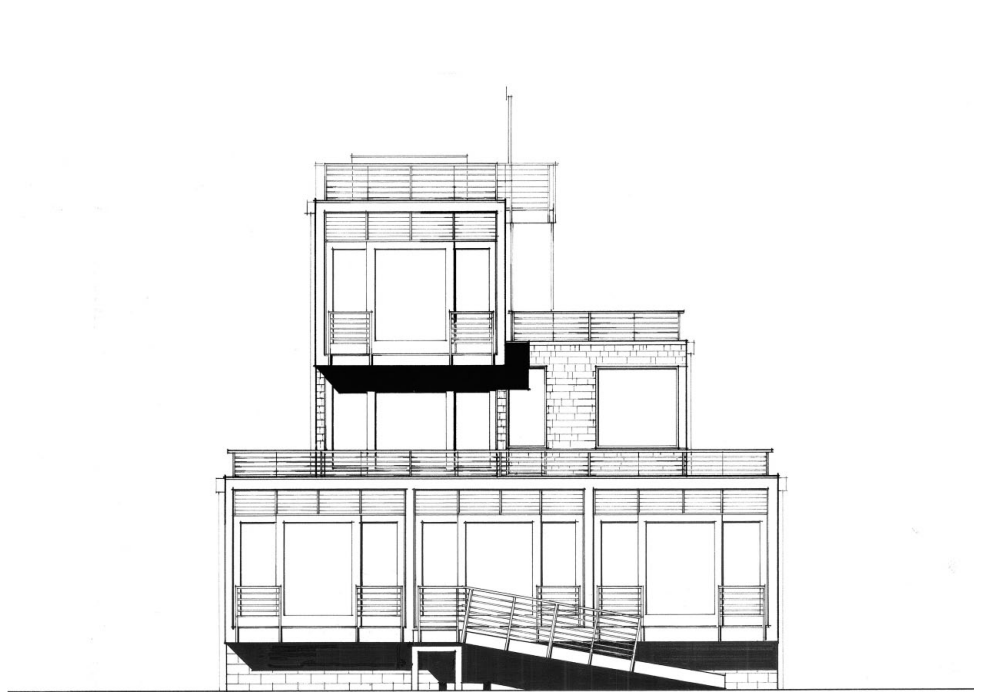


STRUCTURAL SYSTEM

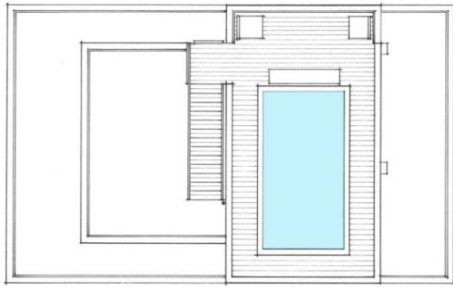




2nd floor desk projects into and overlooks double height space



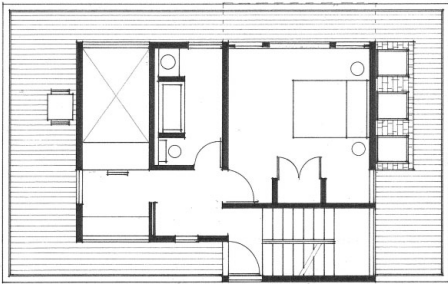
Roof



3



2



1

