



A NEW POOL HOUSE AND SITE IMPROVEMENTS FOR THE CHEVY CHASE RECREATION ASSOCIATION

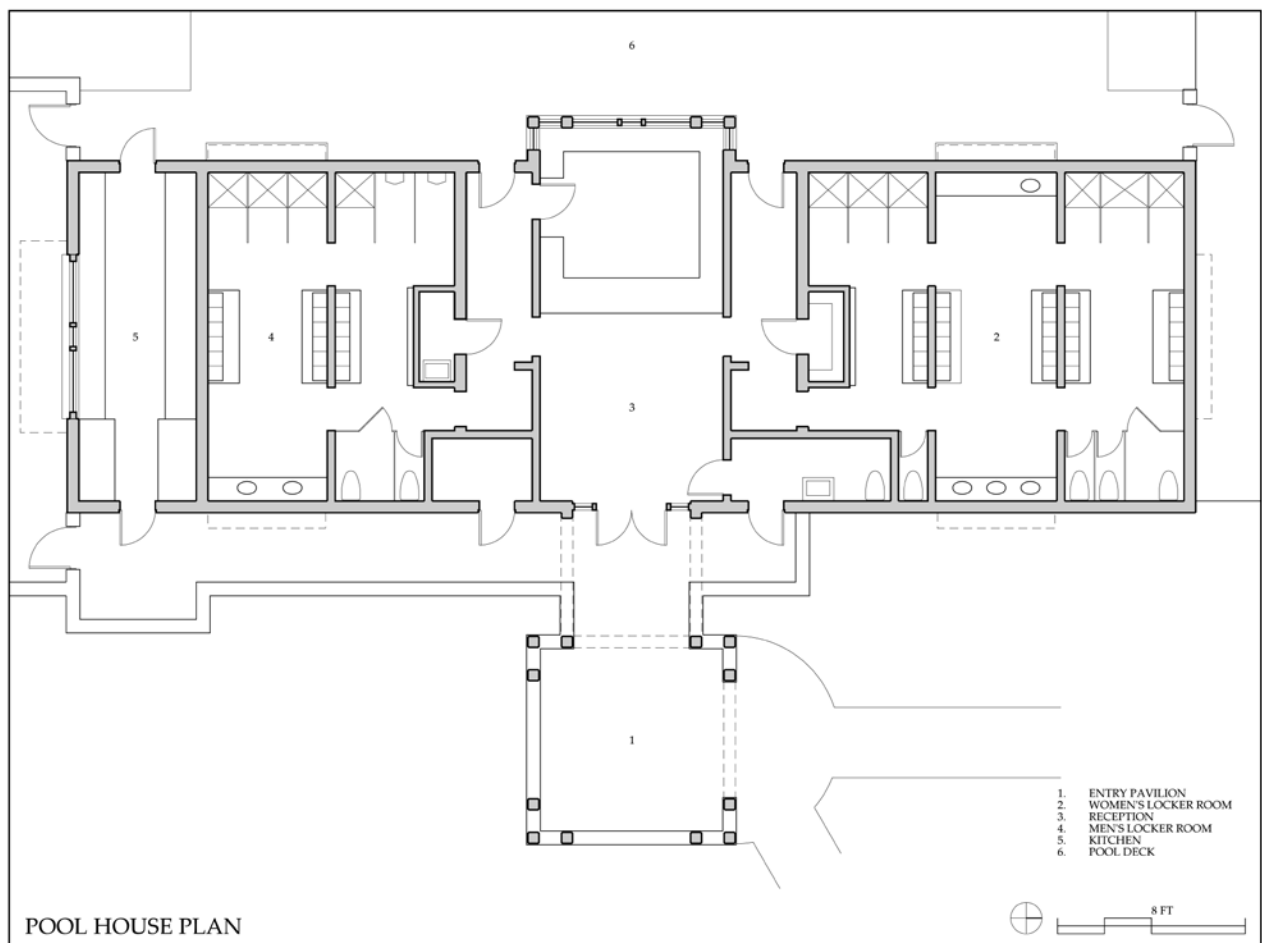
Chevy Chase, Maryland

Institutional Architecture

This project is a new pool house and related site improvements for the Chevy Chase Recreation Association, a private swim and tennis club located in Chevy Chase, Maryland. As a replacement for the existing 1960s era pool house, the new 3,000-sf main structure includes larger locker rooms, a larger lobby and administrative area, a covered exterior entrance, a year round restroom for tennis players, and an enlarged commercial kitchen. A new wading pool, screened porch for protected dining, lifeguard house and equipment storage building round out the Owner's program.

The 5-acre property occupies the historic David Fairchild estate and as such the materials used for the new structures reflect those of the Fairchild House, prominently located on the grounds overlooking the swim club. Stucco exterior walls, shallow pitched roofs, and traditional exterior carpentry detailing all were employed to create a new pool house that is contextual to the historic estate. A clerestory of windows and louvers creates improved interior natural lighting and natural ventilation. Mechanical ventilation and ceiling fans improve air movement during the most humid and hot period of the summer. High, wood trussed ceilings with light monitors create an improved sense of space compared to the lower ceilings of the original pool house. The covered entrance pavilion allows the building to be more visible from the parking lot and entrance walk.

The new wading pool compound to the north and the new dining terrace to the south were designed to respond to the end facades of the new pool house. The new screened porch was treated as a separate garden structure, sited on a small hill overlooking the main pool and adjacent to the dining terrace and café. The lifeguard house and pool equipment structure at the opposite end of the main pool were renovated to reflect the architecture of the new pool house. These supporting structures reinforce a cohesive architectural response that works in harmony with the historic Fairchild House and its possible future incorporation into the CCRA compound.





EXISTING 1960'S FACADE FACING MAIN POOL



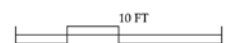
POOL HOUSE FACADE FACING MAIN POOL



POOL HOUSE ENTRY PAVILION



EAST ELEVATION





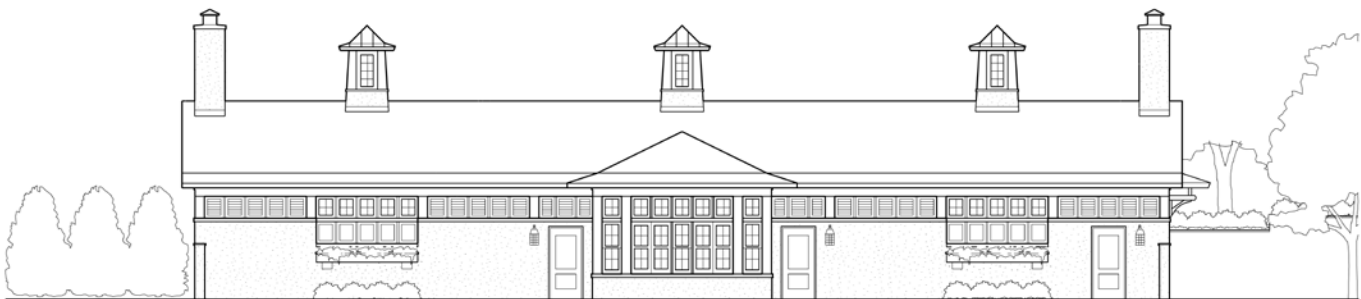
ENTRY PAVILION



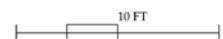
RECEPTION AREA



POOL HOUSE WITH SCREENED PAVILION BEYOND



WEST ELEVATION





EXISTING LIFEGUARD HOUSE



LIFEGUARD HOUSE



DINING TERRACE WITH LIFEGUARD HOUSE BEYOND



SCREENED PAVILION WITH POOL HOUSE BEYOND