

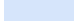

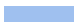
PROJECT SYNOPSIS

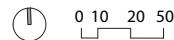
Eagle Academy PCS at McGogney is a full renovation and addition to a former DCPS school. The 92,000 sf project accommodates 900 students. The new building exterior is composed primarily of polycarbonate multiwall sheets, creating a lantern effect and neighborhood icon.

The three-story, L-shaped addition houses a pool room on its lowest level, a gymnasium above, and several other spaces, including a new entry level for the school, a community room, school staff offices, a library and reading rooms, a computer lab, a music room, an exercise room, locker rooms for the pool and gymnasium, and additional support spaces. Reinforcing the school's status as a community asset, the pool and gymnasium can be accessed by neighbors after school hours.

The renovation of the existing structure included the installation of new exterior glazing and interior transformation. The existing building is devoted primarily to classrooms.

1. SCHOOL RENOVATION
2. SCHOOL ADDITION
3. FUTURE HEALTH FACILITY
4. PARKING
5. FUTURE PARKING
6. MAIN OUTDOOR PLAY
7. TODDLER PLAYGROUND

-  RENOVATION
-  ADDITION
-  FUTURE EXPANSION





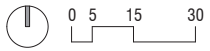
Eagle Academy

VIEW FROM NORTHWEST - LIGHTING

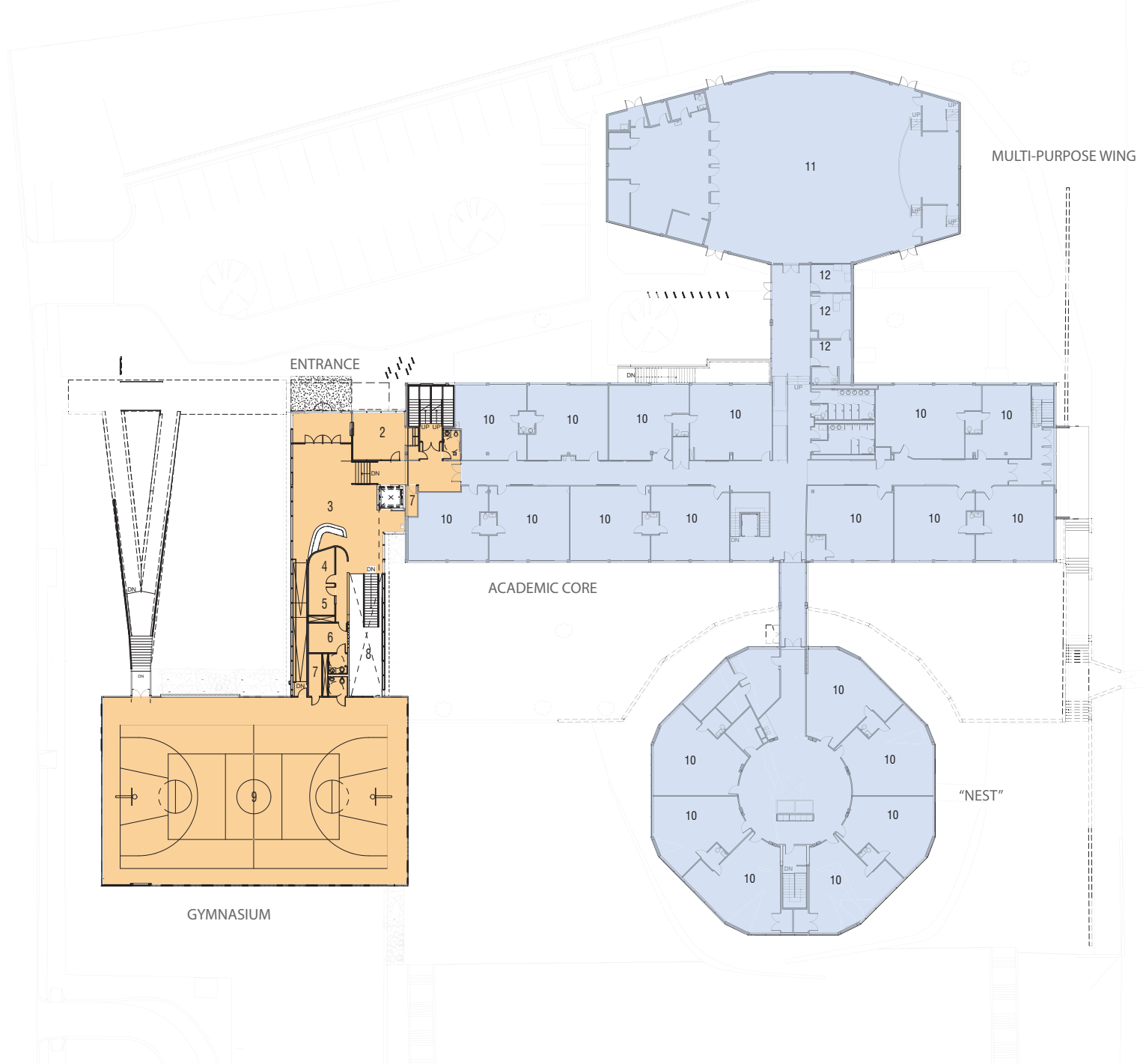


1. VESTIBULE
2. COMMUNITY ROOM
3. LOBBY
4. VICE PRINCIPAL
5. PRINCIPAL
6. OFFICE MANAGER
7. STORAGE
8. OPEN TO BELOW
9. GYM
10. CLASSROOM
11. MULTIPURPOSE
12. OFFICE

RENOVATION
 ADDITION



WHEELER ROAD S.E.



GROUND FLOOR

NEIGHBORHOOD ICON

At night, with the interior lighting turned on, the translucent panels reverse their function, emitting a lantern-like glow that helps to reinforce the schools' status as a neighborhood landmark.

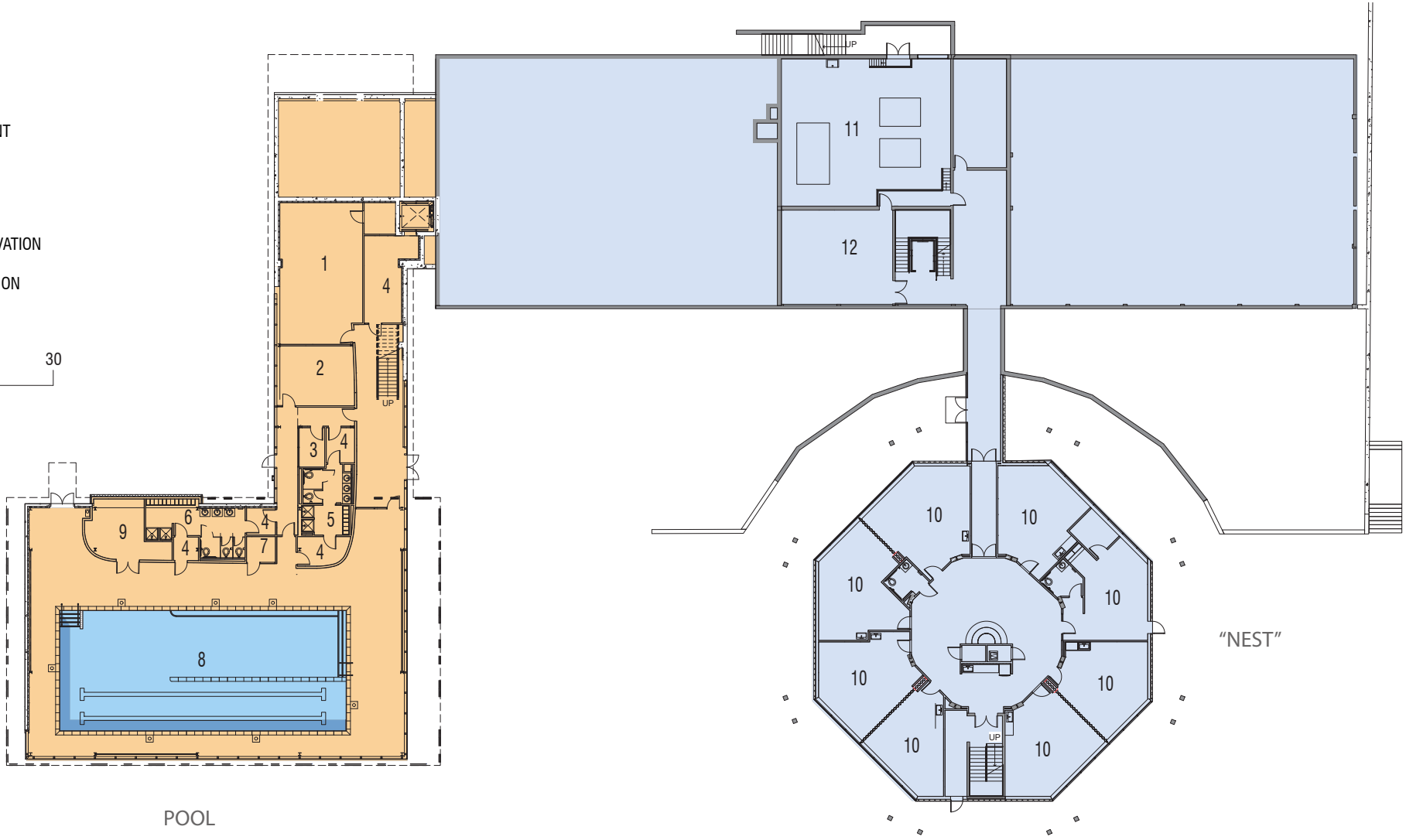
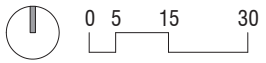


VIEW FROM NORTHWEST CORNER



1. MUSIC ROOM
2. EXERCISE ROOM
3. POOL SECURITY
4. VESTIBULE
5. BOY'S LOCKERS
6. GIRL'S LOCKERS
7. SUPERVION
8. POOL
9. POOL EQUIPMENT
10. CLASSROOM
11. MECHANICAL
12. ELECTRICAL

RENOVATION
 ADDITION



GROUND FLOOR



COMMUNITY ENTRANCE TO GYMNASIUM

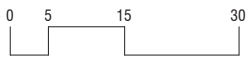


RENOVATED SCHOOL

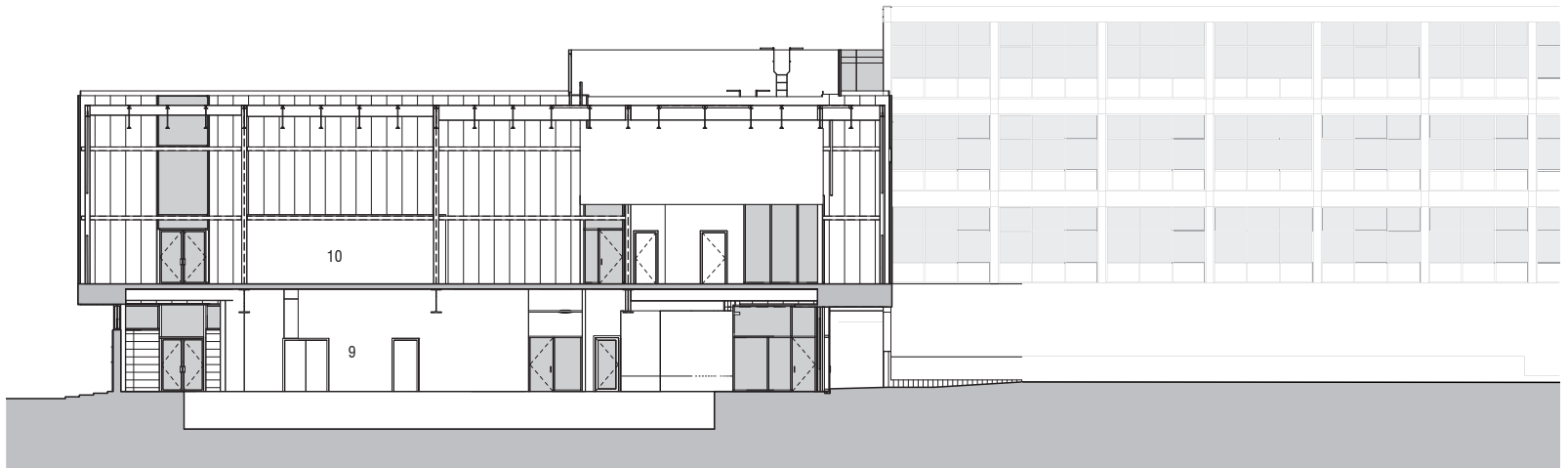


NORTH-SOUTH SECTION LOOKING EAST

- 1. VESTIBULE
- 2. LOBBY
- 3. LIBRARY
- 4. LIBRARIAN/ BOOK ARCHIVE
- 5. COMPUTER LAB
- 6. MUSIC ROOM
- 7. EXERCISE
- 8. CORRIDOR
- 9. POOL
- 10. GYM
- 11. OPEN AIR MECHANICAL



← ADDITION × RENOVATION →

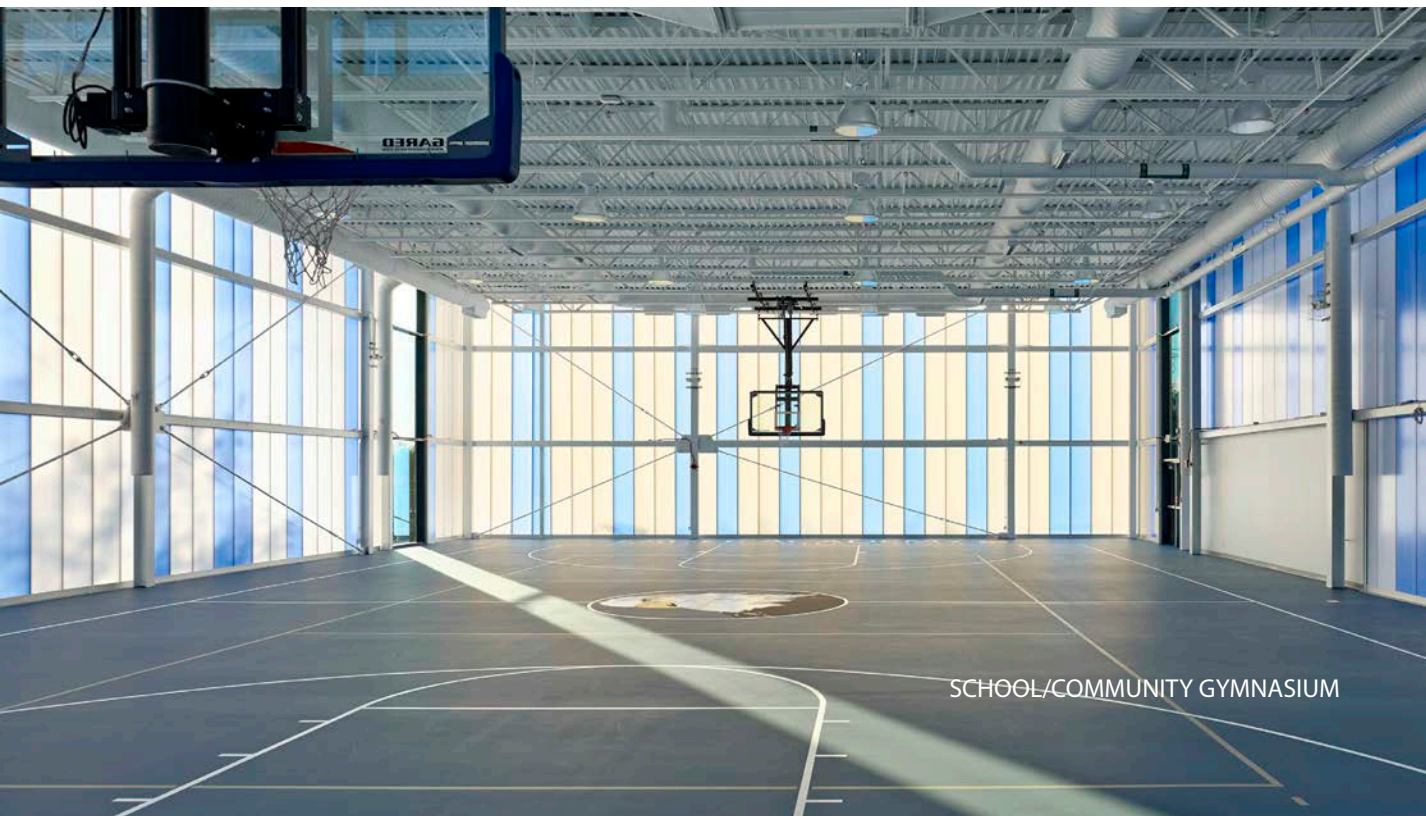
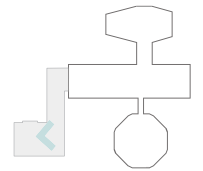


EAST-WEST SECTION LOOKING NORTH



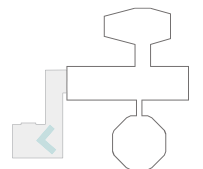
SCHOOL/COMMUNITY SWIMMING POOL

The new wing's lower levels are sheathed in clear glass, maximizing the amount of daylight coming into the spaces inside including the pool room.



SCHOOL/COMMUNITY GYMNASIUM

The upper levels are clad in blue and white translucent polycarbonate panels that admit a soft light during the day into the gymnasium and other interior spaces.





Eagle Academy
3400 WHEELER ROAD SE

VIEW FROM NORTHWEST - DAY LIGHT