



GAITHERSBURG LIBRARY

GAITHERSBURG, MARYLAND

Category: Institutional Architecture

The expansion of Gaithersburg Library, one of the busiest branches in Montgomery County, was essential to meeting the 21st century needs of its growing and diverse constituency – a community that speaks more than five languages.

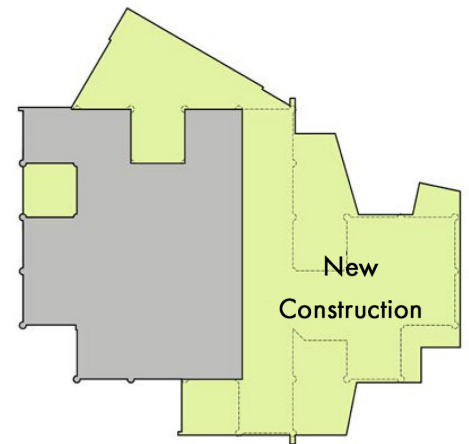
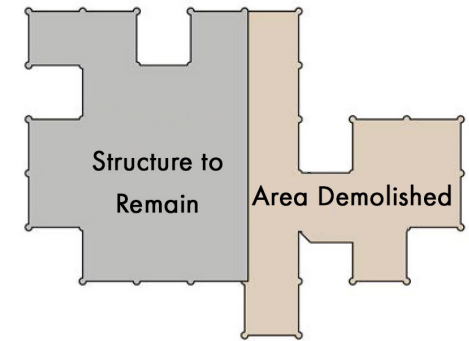
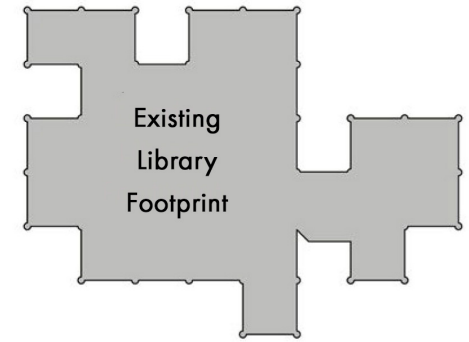
The design focused on expanding traditional library amenities, such as books, computer stations and resource materials, while also creating dynamic spaces that foster community-building and support cultural programs and

courses, such as English as a second language and citizenship preparation.

Since the three-acre site would not accommodate the expanded program on one level, the solution was a partial demolition of the building and a new two-story addition. This accomplished three major goals: 1) Creating a new, welcoming, identity for the building, 2) Providing a remote location for noisier activities, and 3) Facilitating the development of a new spine between the

renovated and new structure. The spine, with abundant natural light through the introduction of a clerestory, is a central wayfinding element visible from any location within the library.

Resource and support areas are located along the new spine for ease of access. Study areas are located nearby that support group interaction while an array of gathering spaces support the broad needs of the Gaithersburg community.



In the original layout the library was located to the south and meeting rooms to the north with a narrow link and entrance between them. The new entrance faces the parking lot. The foot print of the two-story north addition was maximized and the library level was expanded to the west.

Expansion



Intersection of Montgomery Village Avenue and Christopher Avenue



Intersection of Montgomery Village Avenue and Christopher Avenue



West Facade



Awarded LEED Gold, the design features vegetative roofs to control storm water runoff, highly efficient building envelope and mechanical systems, use of daylighting and automated lighting controls, and extensive use of regional and recycled materials.





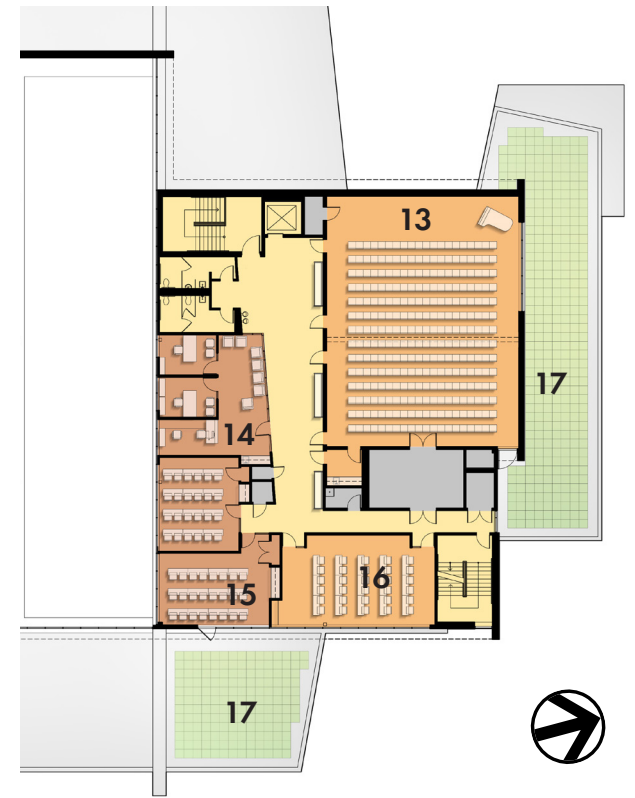
MONTGOMERY COUNTY PUBLIC LIBRARIES
GAIHERSBURG
1992

Main Entrance

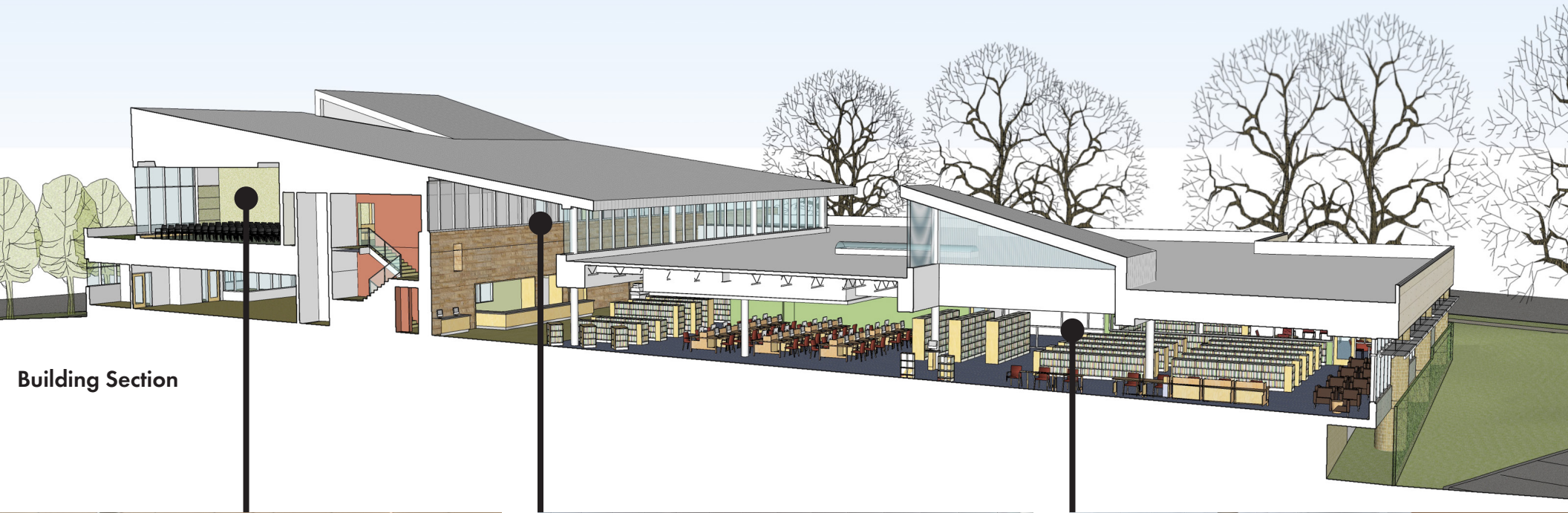
1ST FLOOR PLAN



2ND FLOOR PLAN



- 1 Lobby / Cafe
- 2 Circulation / Atrium
- 3 Adult Library
- 4 Young Adults
- 5 Children's Library
- 6 Administration
- 7 Quiet Reading Room
- 8 Children's Activity
- 9 Service Entrance
- 10 Toddler Discovery Room
- 11 Computer Area
- 12 Computer Lab
- 13 Community Room
- 14 Gilchrist Center for Immigration Service
- 15 ESL Classroom
- 16 Meeting Room
- 17 Green Room



Building Section



Multi-Purpose Room

The second level includes meeting rooms and community services offices. A large multipurpose room has an overhead dividing partition.



Atrium

The two story central hall connects the children's collection with the rest of the library and contains the circulation and information desks along with a multi-screen information kiosk. Second floor offices overlook the central hall.



Reading Space

A new monitor with clerestory was added to the library to provide daylight to reading areas.



Atrium



The Gaithersburg Library is a hub for multi-cultural learning and a resource center for neighborhood. It is a light-filled, welcoming space with quiet and active gathering areas that foster learning and community spirit. In the central hall a mobile with stylized leaves, inspired by the tree in the City of Gaithersburg's logo, was designed.





Laptop Bar



To meet the growing demand for on-line services, the library features wi-fi and convenient areas for patrons to plug in their laptop and tablets. Public access computers are also available.



Children's Room



Lobby Entrance



Teen Section