

Fred Lazarus IV Center

Graduate Studio Center,
Maryland Institute College of
Art

Baltimore, Maryland
Higher Education

REDEVELOPMENT CATALYST FOR AN EMERGING ARTS DISTRICT

This under-utilized building has been transformed into a dynamic hub of graduate and undergraduate study programs. A dark, lifeless space without connection to the main urban street was transformed into a major street presence opening to art galleries, cafe space, and a new lecture hall.



The new design also brings natural light deep into the building by a major cross-corridor lobby and exhibit space used to reorganize the interior. Recently renamed to pay tribute to former, long-time President Fred Lazarus IV, the Graduate Studio Center honors his enthusiasm for both MICA and the Greater Baltimore community.



MAIN EXTERIOR ENTRY



INTERIOR ENTRY AND SECURITY



TYPICAL STUDIO FLOOR



EXISTING CONDITIONS

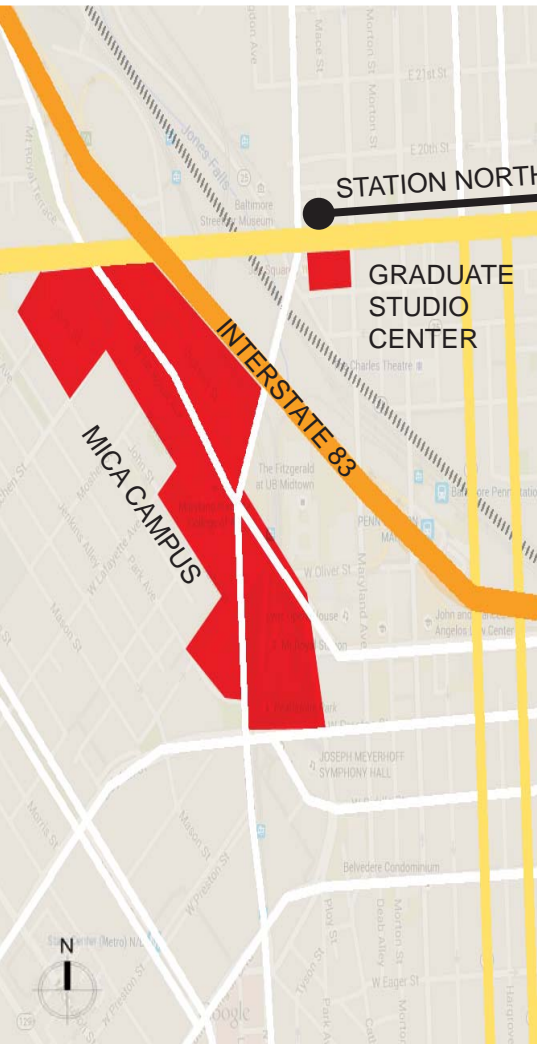
The century old warehouse has served as a home for the College's graduate students for 12 years, the renovation will make the building--with newly expanded galleries, a café and academic activity--an integral and cultural part of the city's Station North Arts & Entertainment District.

ANCHORING AN ARTS DISTRICT

Since its reopening, the Graduate Studio Center has served as an anchor to the burgeoning neighborhood and acts as a redevelopment catalyst for the Station North Arts & Entertainment District.



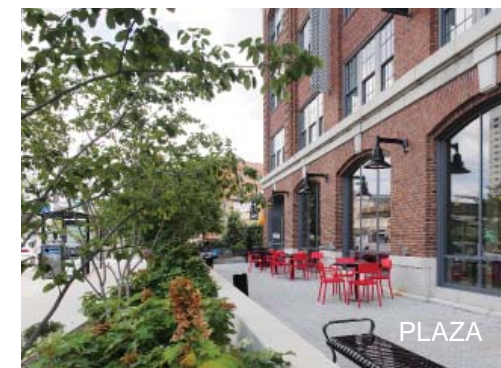
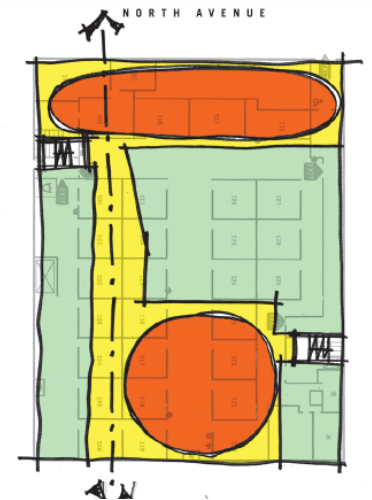
STATION NORTH ARTS DISTRICT CORRIDOR





CONNECTION WITH THE STREET

What was once a dark, unfriendly entry into the building now opens up to the street, with large windows which showcase student work, inviting passers-by to engage with the school.



COMMUNICATING STAIR

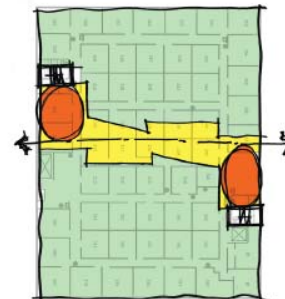
PLAZA





ORGANIZING THE STUDIOS

The upper floors of the building used to be a labyrinth of student studios with daylight only breaching the north and south ends. With the additional windows, galleries, and student lounges, the floor plan is more open and day lit while providing much-needed collaborative spaces.



STATE OF THE ART TECHNOLOGY IN AN HISTORIC WAREHOUSE

Auditorium: anchors the opposite end of the main floor corridor and is adjacent to the administration offices. Also shares its use with the community.

Digital Media Lab

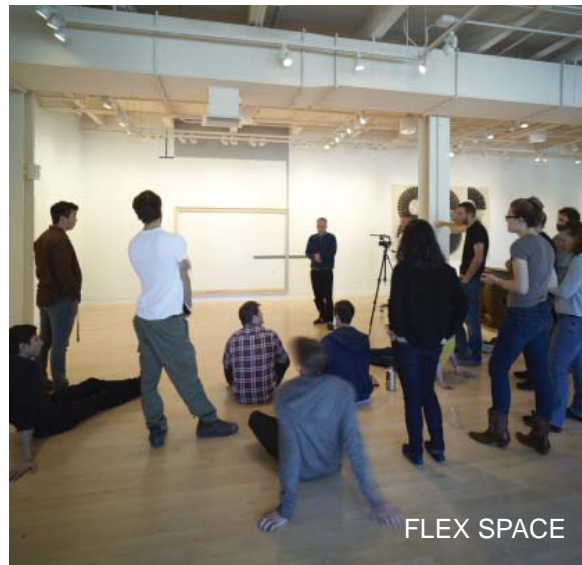
Fabrication Lab: now consolidated in one large space in the basement level with access off the rear alley via existing large loading bay.

Flexible public spaces: provide informal crits and organizing hub for each floor.

Multi-media gallery spaces



AUDITORIUM



FLEX SPACE



DIGITAL LAB



MICA

MICA

MICA