

Cabinet Reshuffle

Project Location: Bethesda, MD

Project Category: Interior Architecture

Project Synopsis:

Along with the painted shuffled oak cabinets, new windows and doors were used in the kitchen/Living/family room area where the bounds, permeations, fireplace and island location remain essentially the same. The design focuses on language, color and proportion. The shuffle of existing raised panel oak cabinets boxes, mostly of different sizes, became a mathematical game. The spoils of which were the savings of 40% of the cabinet budget.

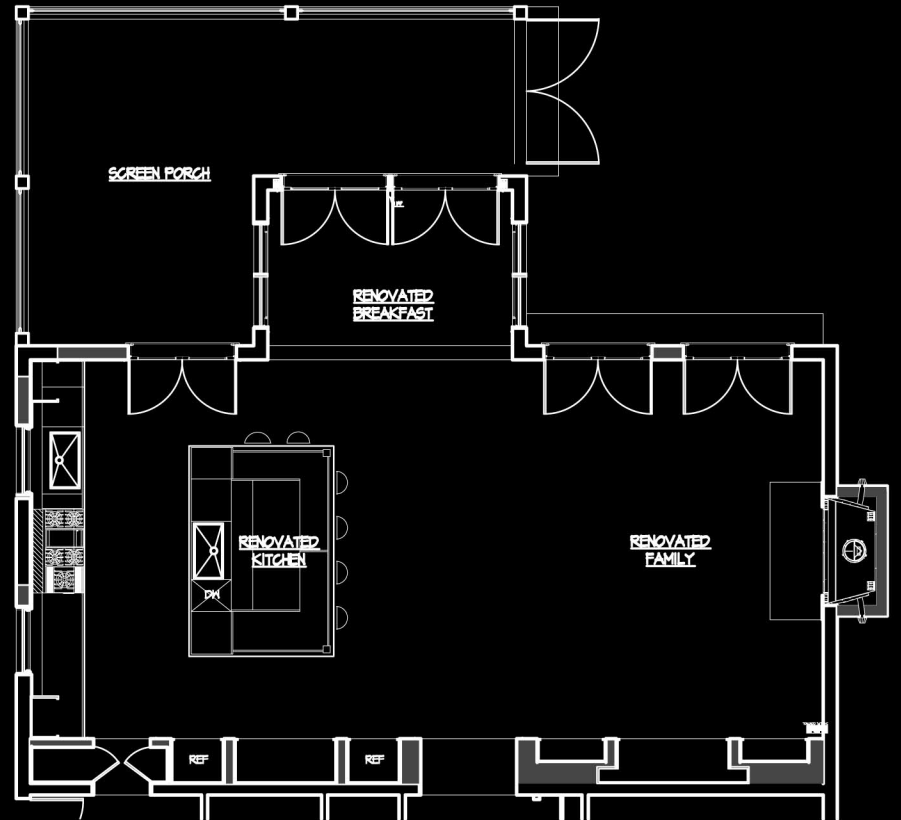
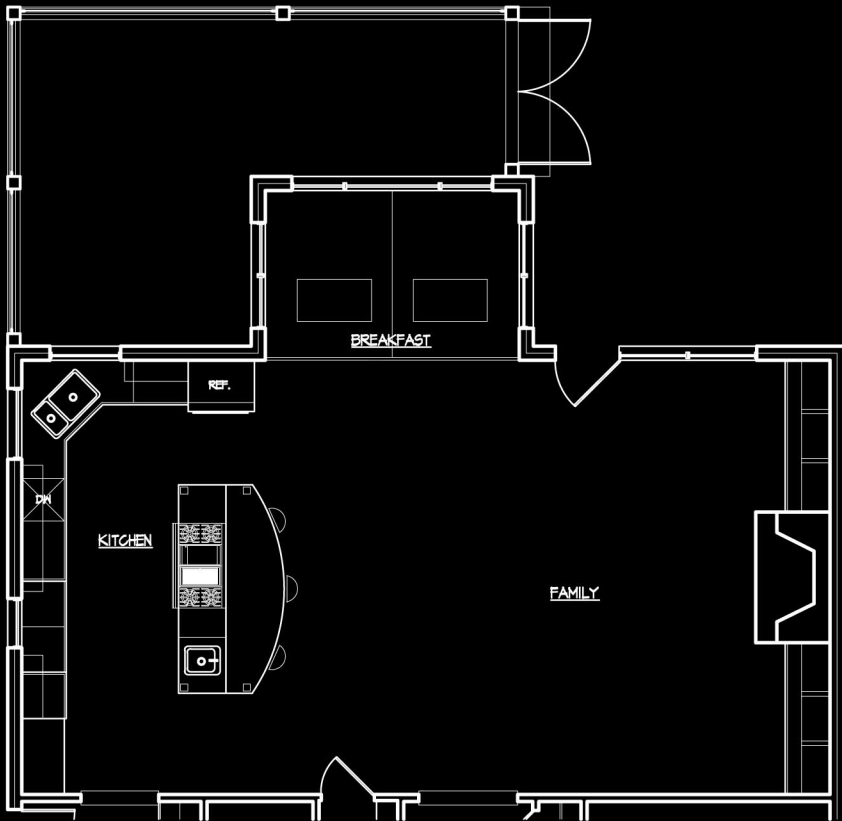
The savings was used for a series of floor to ceiling flat panel wall cabinets bordered by a subtle reveal that housed a coffee area refrigerator/freezer units and a series of upper cabinetry for trays, coffee mugs, breakfast food, and a small microwave. This cabinetry was also used in a family room bar beyond the reveal detail edges the drywall producing a pattern of pencil line rectangles and squares.

A third language of cabinets hidden in the trim surround of the entry to the mudroom is used for slide out cabinets for pantry supplies that are imperceptible for the non-owner.

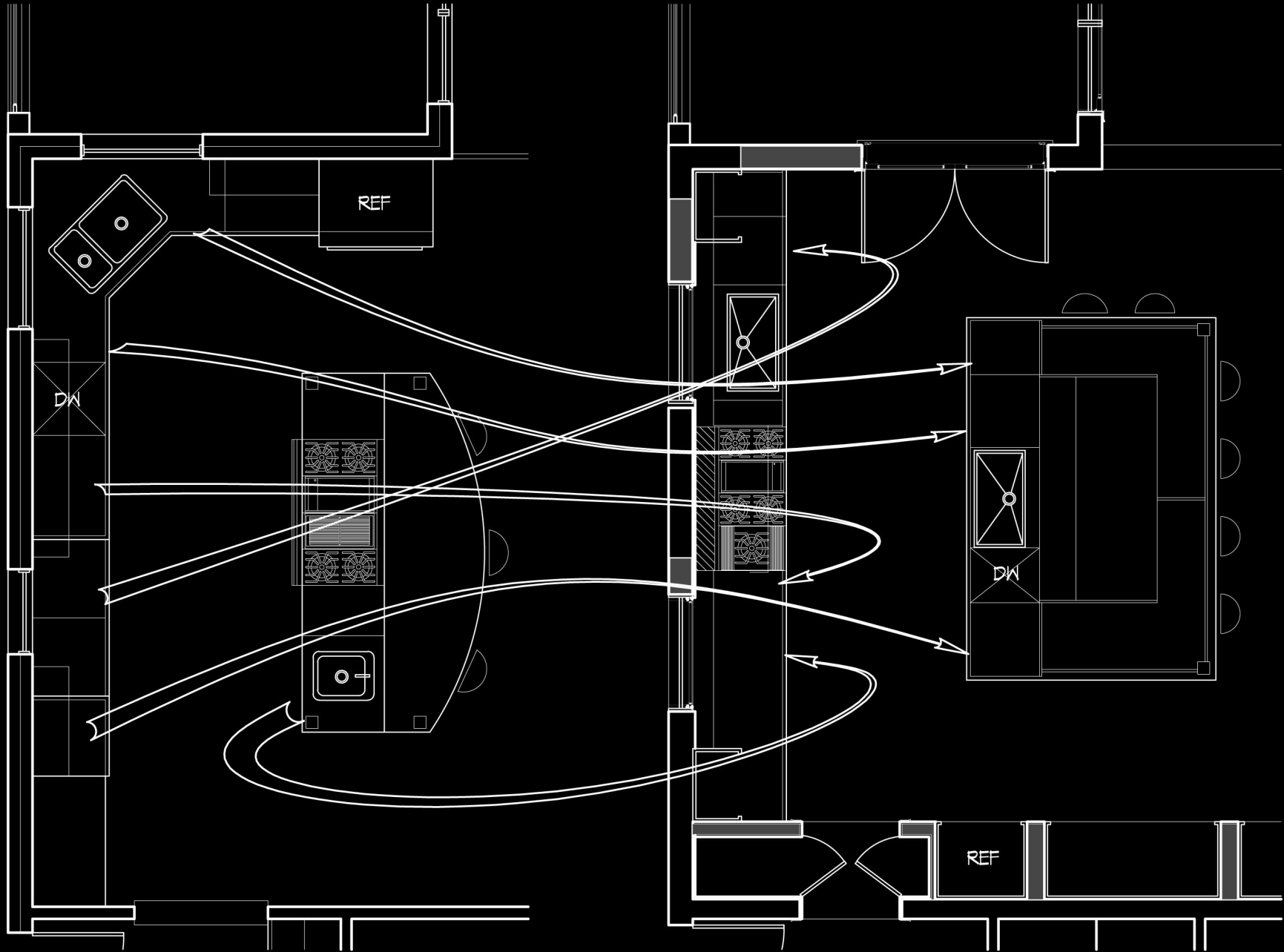
Even though a variety of languages was used in cabinetry, the subtlety of refined details and complementary patterns produce a quiet and simple environment while at the same time saving money and waste of discarding the existing cabinets.

Existing Floor Plan and Photo

Proposed Floor Plan



Shuffling of existing cabinets



Before

After



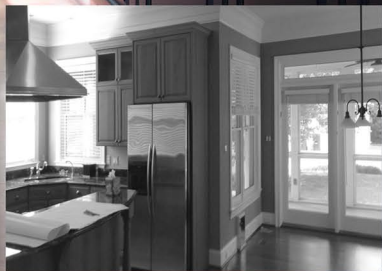
Before



View of kitchen from family room



Before



View of kitchen towards screened porch



View of kitchen from
screened porch



View of kitchen from island's edge



Before



View of kitchen from the family room



View of kitchen

Before





View family room from kitchen

Before

