

Chalon Road House
Bethesda, MD

Single Family



SITE: A two-acre lot in the Bradley Woods section of Bethesda, MD, a close by suburb of Washington, DC. Developed in the late '60s, the neighborhood is the home to a range of house types - size, style and era. The neighborhood is completely residential yet lacks public spaces - sidewalks, public parks or playgrounds.

PROGRAM: This home is for a family of 10. In this era of "small is heroic" it's important to state it up front - this is a big house. Beyond the greater number of playrooms and bedrooms and typical spaces that serve non-typical numbers - dining table for 24, family room TV area for 12, basement playrooms that could support a day camp - the essential program is simple - living/dining, kitchen and breakfast room, family room, etc. Requirements not as common included a gym to be adjacent to the home-office and a study hall for the children.

SOLUTION: The sheer size of the project, over 20,000 sq. ft. brought into sharp relief the challenge of creating livable spaces with appropriate scale and warmth.

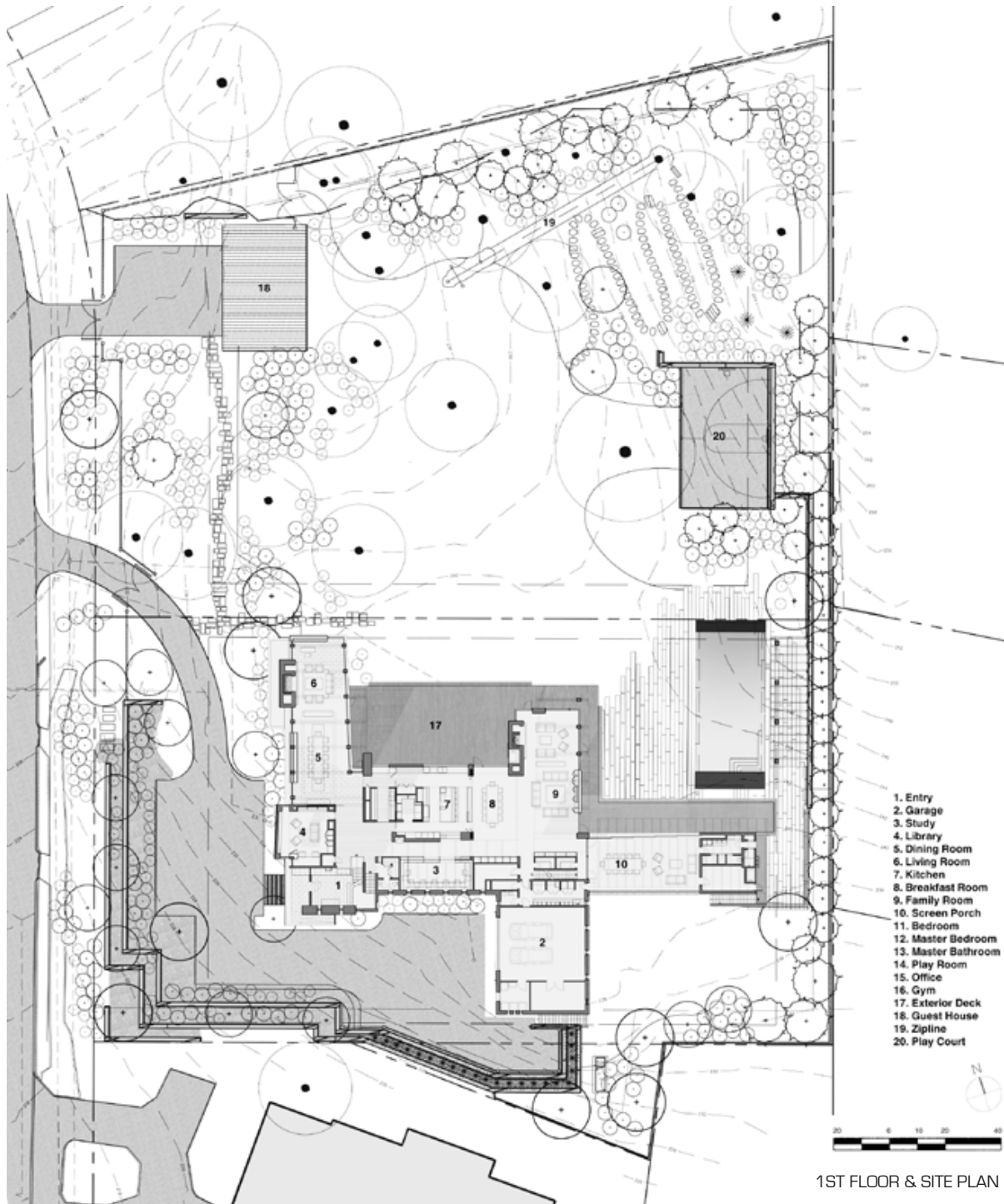
From initial discussions and earliest sketches our design focused on the dual intentions of integrating building & landscape and developing an architecture that melds a tactile legibility with the abstractions of element and mass.

Based on core architectural issues - solid/void, light/shadow, mass/span, our solution works to make clear the materiality and construction of the work and recognizes the importance of gravity and light in the making of architecture.

A continuous wall of glass, interrupted by stone chimney masses and "floating" cabinets, which provide moments of closure and privacy to an otherwise open plan, separates indoor from out on the ground floor. The play of light, shadow, materiality, furniture, and section brings scale and intimacy to the spaces.

Sited hard to the southern edge of the lot and organized along an east/west axis the house opens north to a lawn/play area and to the east to a terrace and pool.





1ST FLOOR & SITE PLAN



3RD FLOOR



2ND FLOOR



ENTRY FACADE



VIEW FROM GARDEN



VIEW ACROSS POOL TERRACE

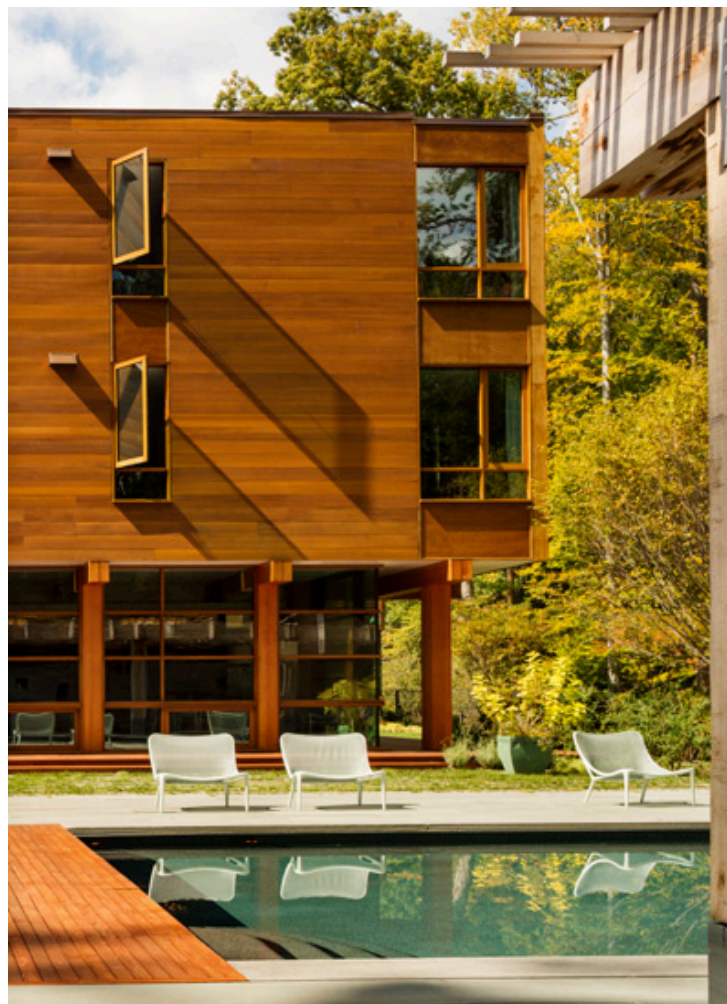




BRIDGE

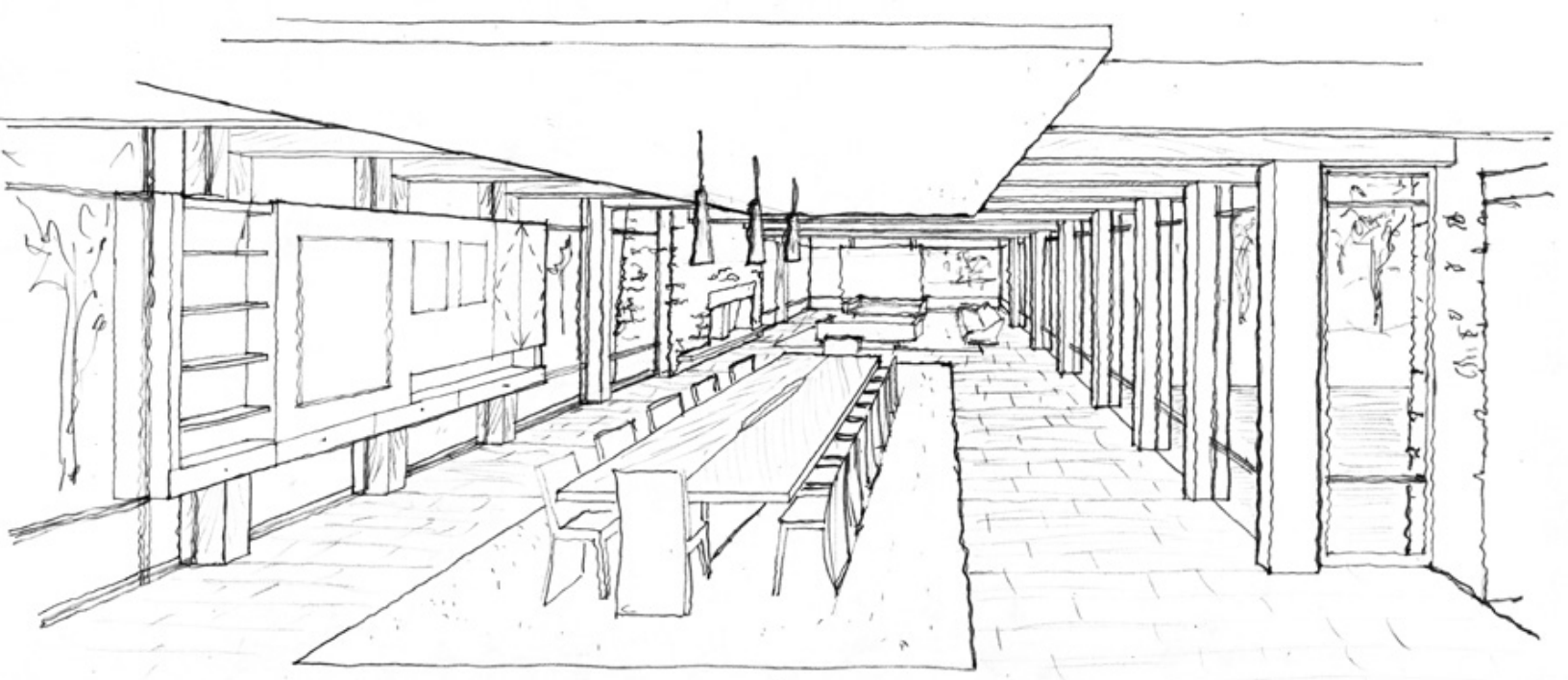


VIEW TOWARDS PERGOLA





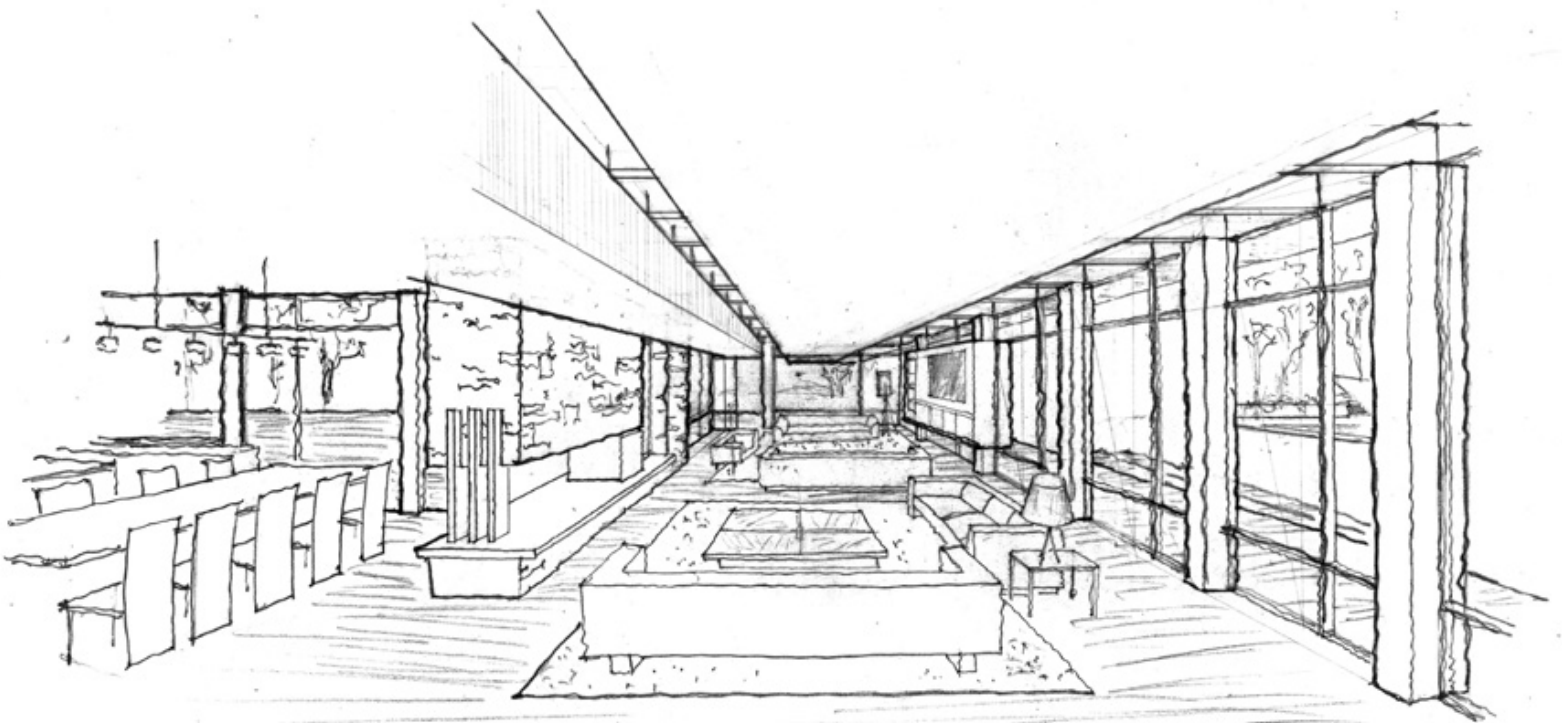
DINING ROOM/LIVING ROOM



ADAMS - LIVING/DINING
AND



FAMILY ROOM



ASONS / PLAN 20
2010





BACK STAIR



SKETCH OF ENTRY



PLAY ROOM



VIEW FROM LAWN