

Project Name: Somerset House Penthouse

Project Location: Chevy Chase, MD

Project Categories: Interiors

Project Synopsis: This project is a complete renovation of a penthouse apartment in a 1980's condominium. A roof terrace encircles the western end of the apartment with 180 degree views of the skyline. The interior was constrained by fixed plumbing, mechanical shafts, and low ceilings combined with the angular geometry of the building. Our design intent was to open the main living spaces to the sweep of the view, create the illusion of higher ceiling with cove lighting, while introducing a complementary curving corridor that unified the private portion of the apartment, leading to the master suite. The requisite fixed elements of the plan are hidden behind the sweep of the hallway. The neutral palette was complemented by English brown oak cabinetry that contains the Client's extensive book collection.



New living space opens to terrace and view of skyline



Kitchen provides a uniform work environment with a moveable table for flexible dining and large opening with pocket doors to Living and Terrace beyond.

The dining area is open to the living space, with sweeping views of the skyline. The walnut floors of the dining flow seamlessly to the wood decking of the terrace. Terrace doors open to provide for outdoor dining, while the concealed shades provide privacy when needed.





A curved hallway serves as a gallery and provides a graceful entry to the private areas of the apartment, while concealing the fixed common building elements. A concealed door provides access to a private dressing room.





The Master Bath echoes the curve of the hallway and features a backlit mirror and vanity with a built-in retractable dressing table. A glass enclosed curb-less steam shower compartment and matching toilet compartment flank the raised platform soaking tub. His and her closets are accessed from either end of the Master Bath.



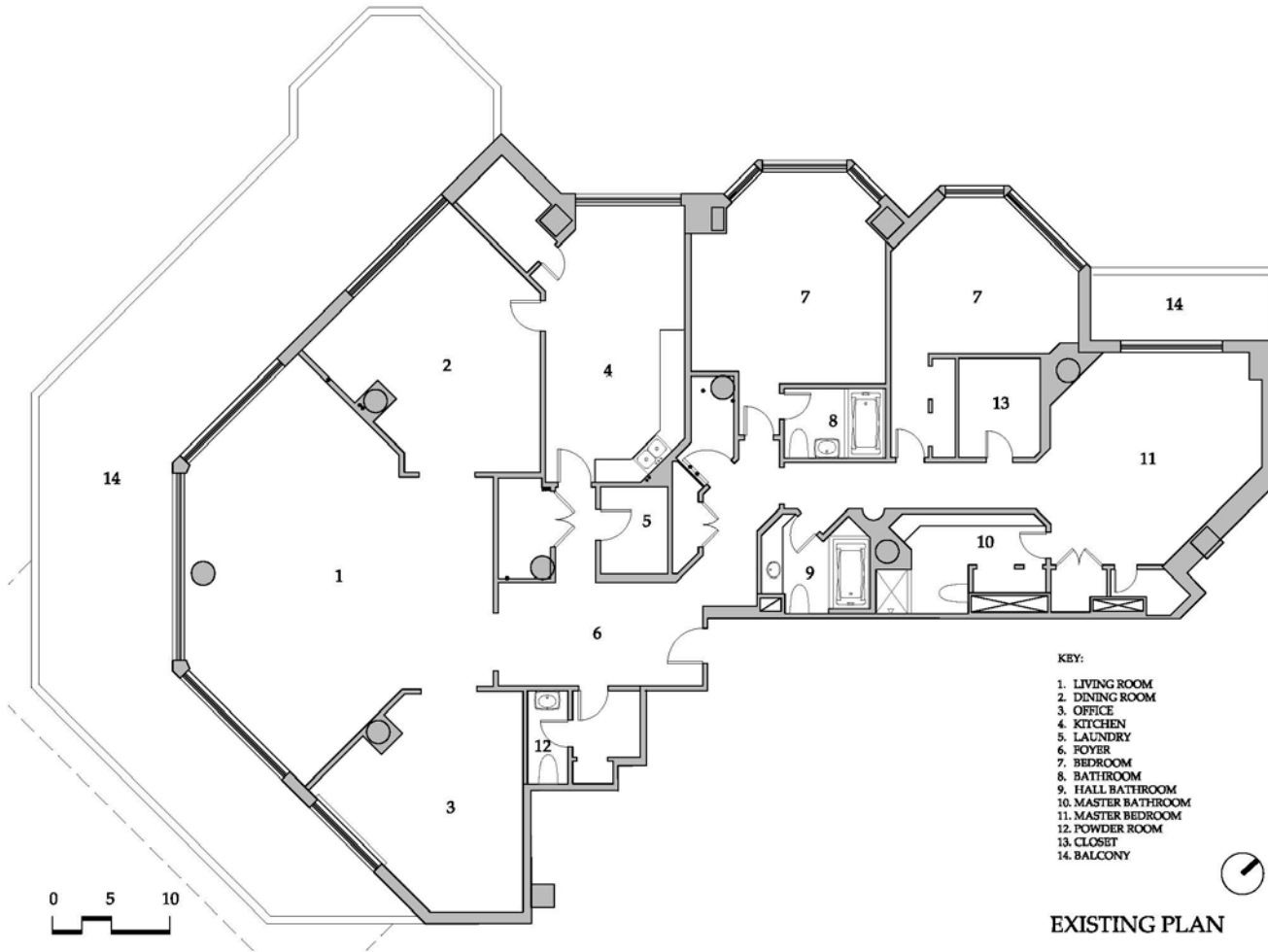


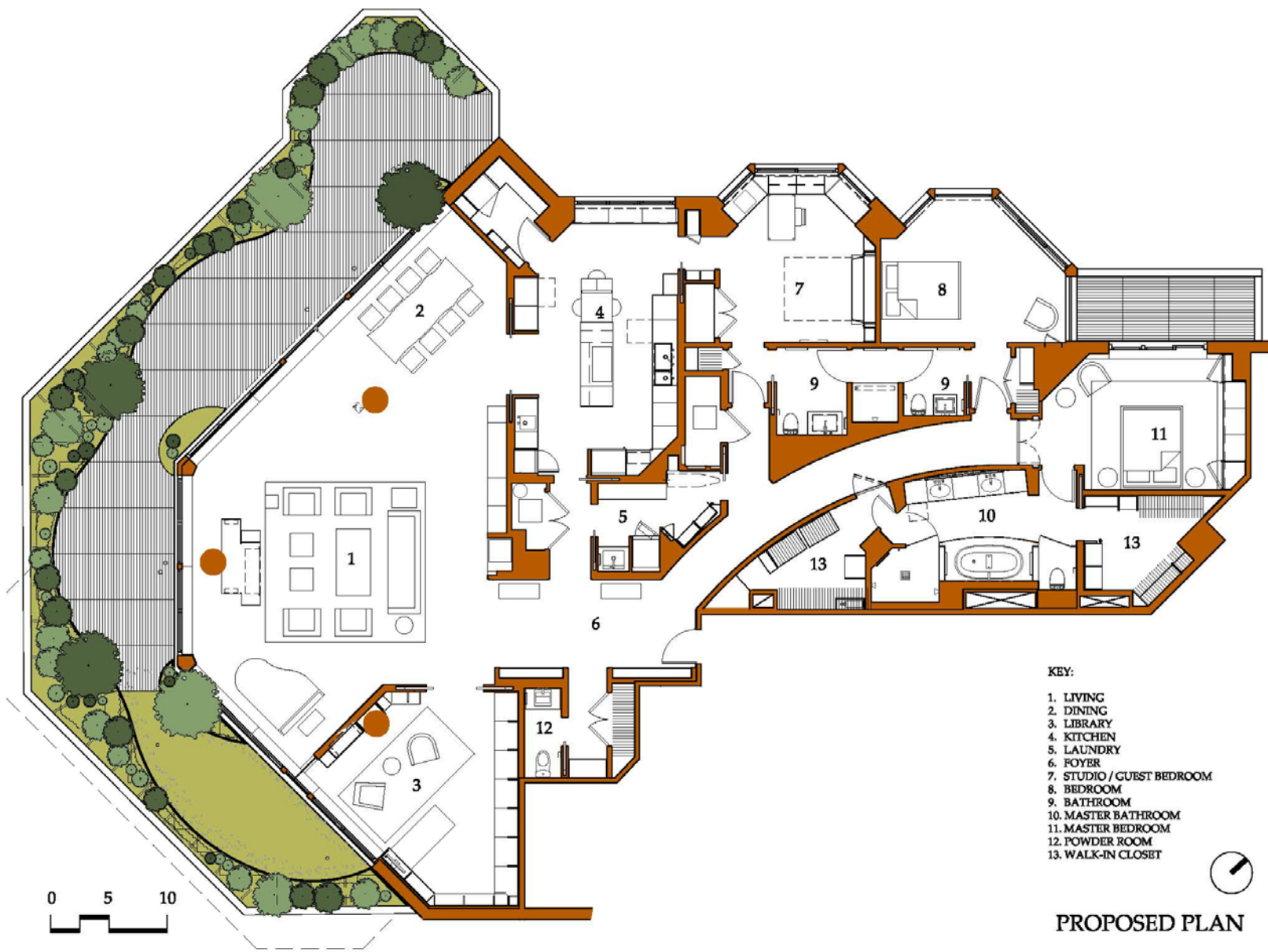
A modern English brown oak paneled library accommodates the client's extensive book collection, while providing a sense of continuity of the glass line and terrace beyond. A large opening with pocket doors allows the Library to open substantially to the Living space.





An EcoSmart fireplace in the living room anchors the center of the living space. The retractable large screen television allows for easy viewing without impeding upon the extensive skyline view.





- KEY:
- 1. LIVING
 - 2. DINING
 - 3. LIBRARY
 - 4. KITCHEN
 - 5. LAUNDRY
 - 6. FOYER
 - 7. STUDIO / GUEST BEDROOM
 - 8. BEDROOM
 - 9. BATHROOM
 - 10. MASTER BATHROOM
 - 11. MASTER BEDROOM
 - 12. POWDER ROOM
 - 13. WALK-IN CLOSET



PROPOSED PLAN