

MONTGOMERY COUNTY CIRCUIT COURT

ROCKVILLE, MD
INSTITUTIONAL

The Montgomery County Circuit Court has become the eastern anchor for a revitalized government center and a symbol of the courts' important role in the community. This project involves the design of a new courts Annex and renovation of the existing Courthouse. The design includes high volume support space for Family Services and Family clerks, and a child play area on the first floor. The Magistrates occupy the second floor in eight hearing rooms and associated chambers, with dedicated Juvenile and Criminal/ Civil Courts on upper floors. The Annex provides for ten new courtrooms, seventeen courtrooms remain in the existing building.

The design improves circulation throughout the complex. This expansion allowed for a reconfiguration of the existing entry screening areas to provide additional screening stations and improved queuing and flow. Reuse of the existing entries and creation of the new perpendicular public corridor to the Annex allow the public circulation on the building's first floor to be organized in a "T" configuration to facilitate way finding.

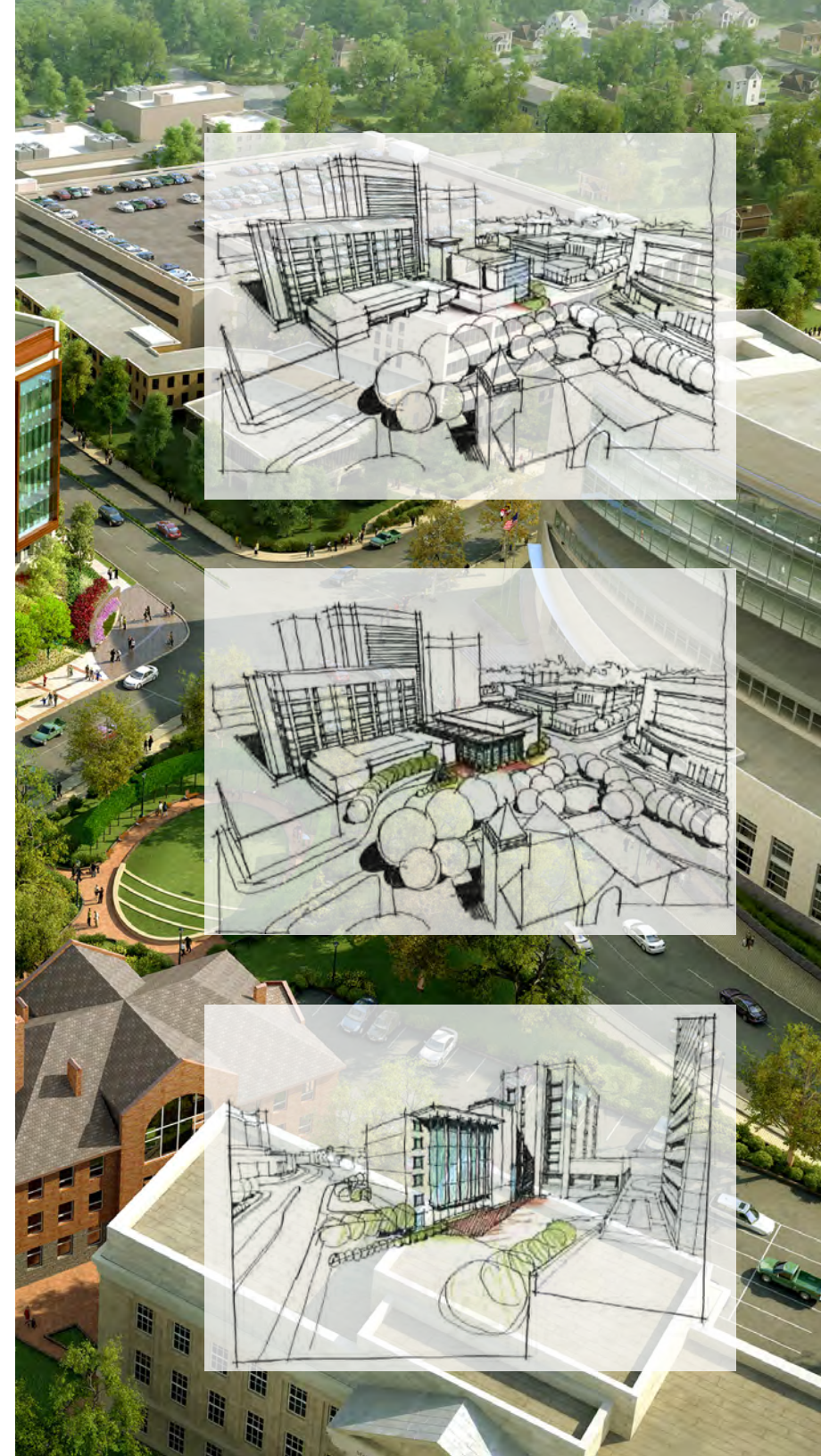
The Annex features an efficient four-court-per-floor layout organized around a north-south corridor that overlooks a shared government plaza and landscaped park. The four hearing room/courtroom stacks are expressed as "pillars" topped by lanterns that illuminate the skyline. These lanterns are powered by photovoltaic cells. The public face is expressed with a highly transparent glass curtainwall system looking out onto a shared plaza. Judges spaces are contrasted to recognize individual department identity. These spaces look out onto the District Court and the historic court plaza.



(C) ANTOINETTE CHARLES PHOTOGRAPHY



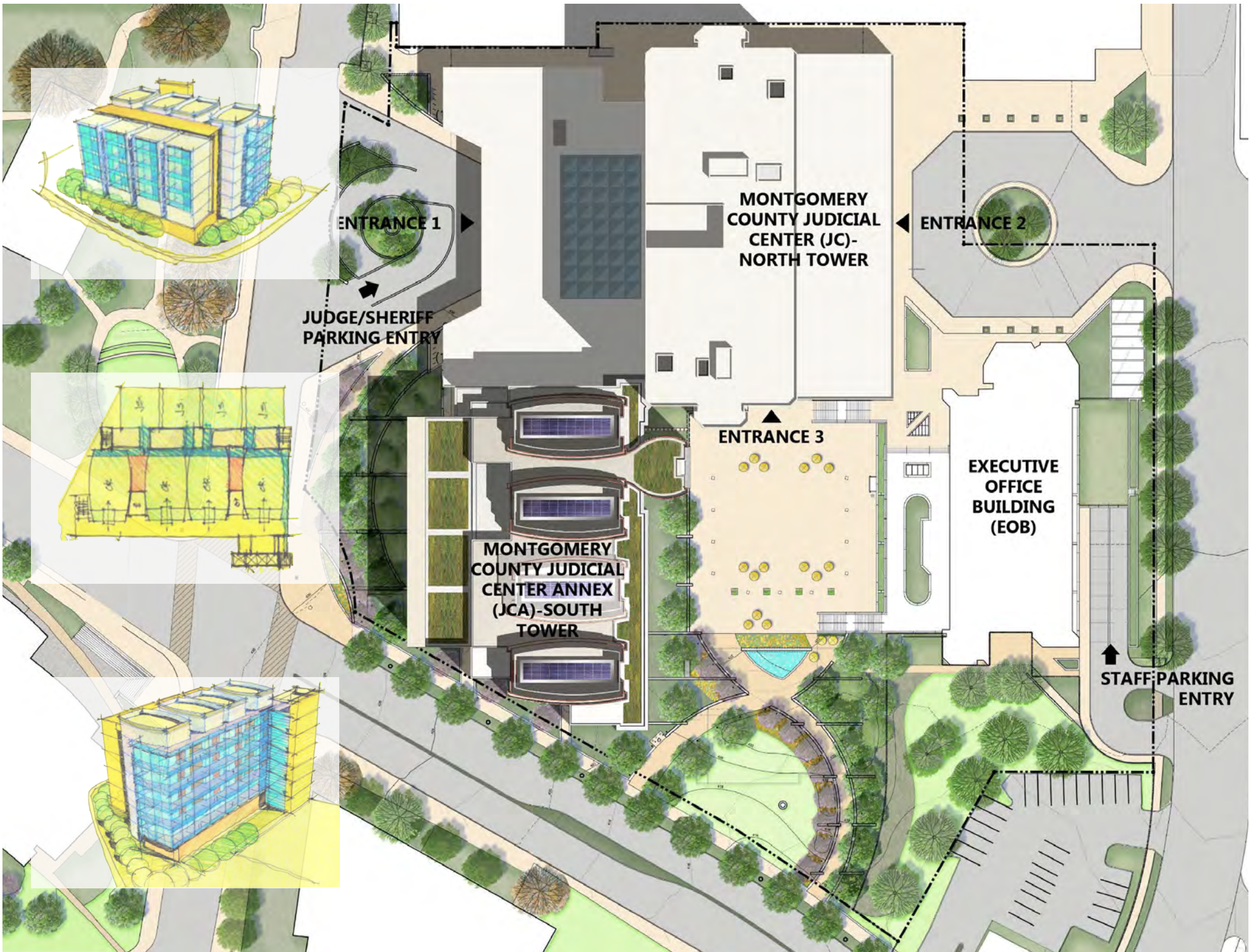
(C) ANTOINETTE CHARLES PHOTOGRAPHY

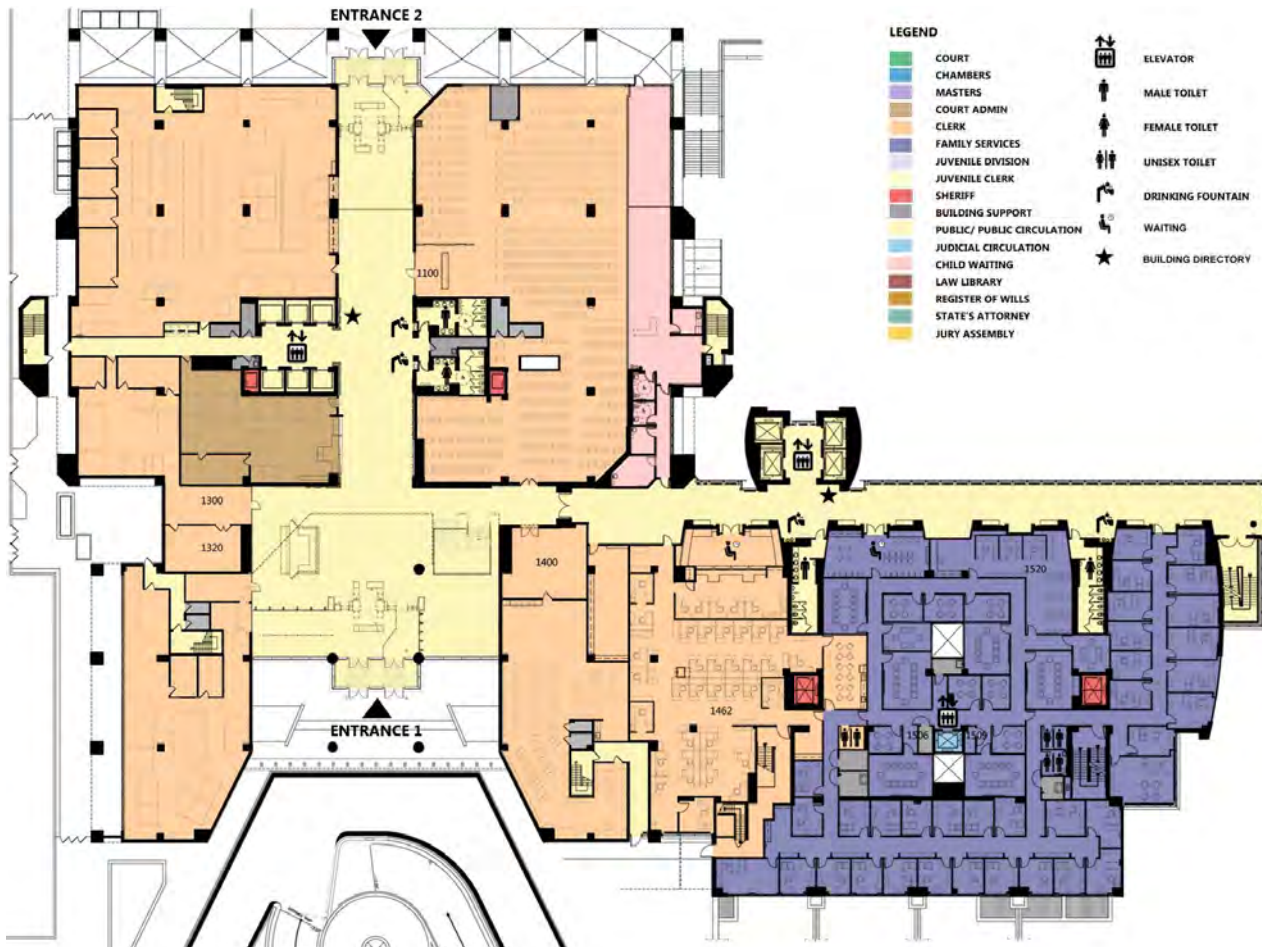






MONTGOMERY COUNTY CIRCUIT COURT





- LEGEND**
- COURT
 - CHAMBERS
 - MASTERS
 - COURT ADMIN
 - CLERK
 - FAMILY SERVICES
 - JUVENILE DIVISION
 - JUVENILE CLERK
 - SHERIFF
 - BUILDING SUPPORT
 - PUBLIC/ PUBLIC CIRCULATION
 - JUDICIAL CIRCULATION
 - CHILD WAITING
 - LAW LIBRARY
 - REGISTER OF WILLS
 - STATE'S ATTORNEY
 - JURY ASSEMBLY
- ELEVATOR
 - MALE TOILET
 - FEMALE TOILET
 - UNISEX TOILET
 - DRINKING FOUNTAIN
 - WAITING
 - BUILDING DIRECTORY



LEVEL ONE



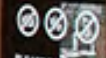


HONORABLE COUNTY CIRCUIT COURT

INFORMATION



SOUTH TOWER
HEARING ROOMS 2J & 2K



PLEASE BE ADVISED
THAT ALL
CONVERSATIONS ARE
ELECTRONICALLY
RECORDED AT ALL
TIMES
PLEASE SILENCE ALL
DEVICES



(C) SISSON STUDIOS PHOTOGRAPHY



(C) SISSON STUDIOS PHOTOGRAPHY



(C) SISSON STUDIOS PHOTOGRAPHY



(C) SISSON STUDIOS PHOTOGRAPHY

