



House on Poplar Avenue

Takoma Park MD
Residential



before

This project converts a tiny mid-century modern house into a small modern one. What had been a 1 story box on a walk-out basement is now a 2 story modern box on a walk-out lower level.

While simple and economical in construction — straightforward framing, no new footings or foundations — the 3 small original bedrooms have moved up and out of the main level, freeing up much needed space for a reconfigured, generous open plan for living, dining and kitchen.

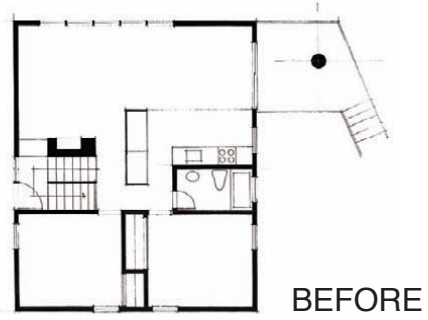
As the client is one of the area's most accomplished

builders and served as contractor, we were able to selectively indulge in highly crafted elements, such as specialized cabinetry and an articulated stair. A simple exterior shape now gives way to an interior of surprising richness and complexity.

On the exterior, a simple black metal form is elaborated with a series of colored attachments that make a 2 story projected window bay, an entry canopy & frames for window groupings. The colors are inspired by Richard Diebenkorn's Ocean Park paintings.







BEFORE





