

FRANKLIN CORNER



Kensington, MD
Residential Architecture

The neighborhood is a mix of traditional pattern of small houses interrupted by larger volume houses. It is located on two streets intersecting at an acute angle which creates a site with generous public space, but limits outdoor privacy.

The program is to create shared living spaces for three generations of one family. One of the generations is teenage daughters and the second their parents who are both rooted in the Kensington Parkwood community. The third generation is the grandparents who are relocating to Kensington upon retirement after living in Japan for 32 years. Therefore, fundamental aspects of Japanese living were to be incorporated into the home, including a genkan, a shoe removal area, at every entrance, and an ofuro, a shared Japanese family bath.

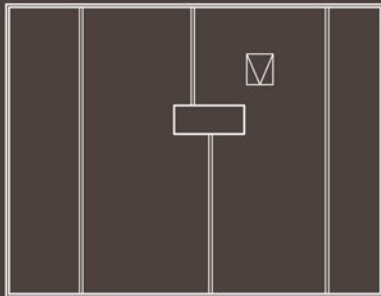
Drawing from the Japanese influenced prairie style, this contemporary interpretation includes a private courtyard, low sloped hip roof, horizontal banding, and deep overhangs. Responding to the steep slope of the site, the primary structure houses the younger generations in the two story with low sloped roof. The older generation occupies a one story cottage that rises from the grade without towering over properties downhill. The two story house and the one story cottage each connect to the shared space including the kitchen, dining, and family room. The family room is expressed as a segmented, semi-circular space transitioning the two geometries while addressing both street fronts and the corner.



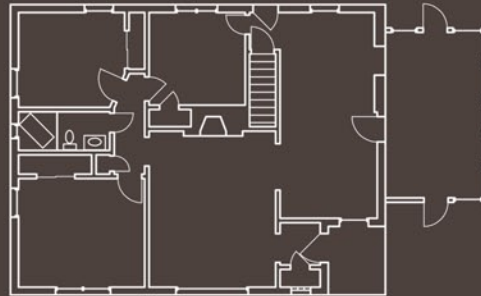
Franklin Street Front



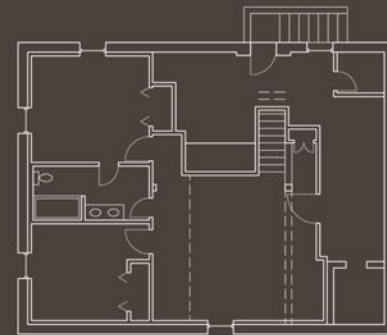
Before



Before Attic Level



Before Main Level



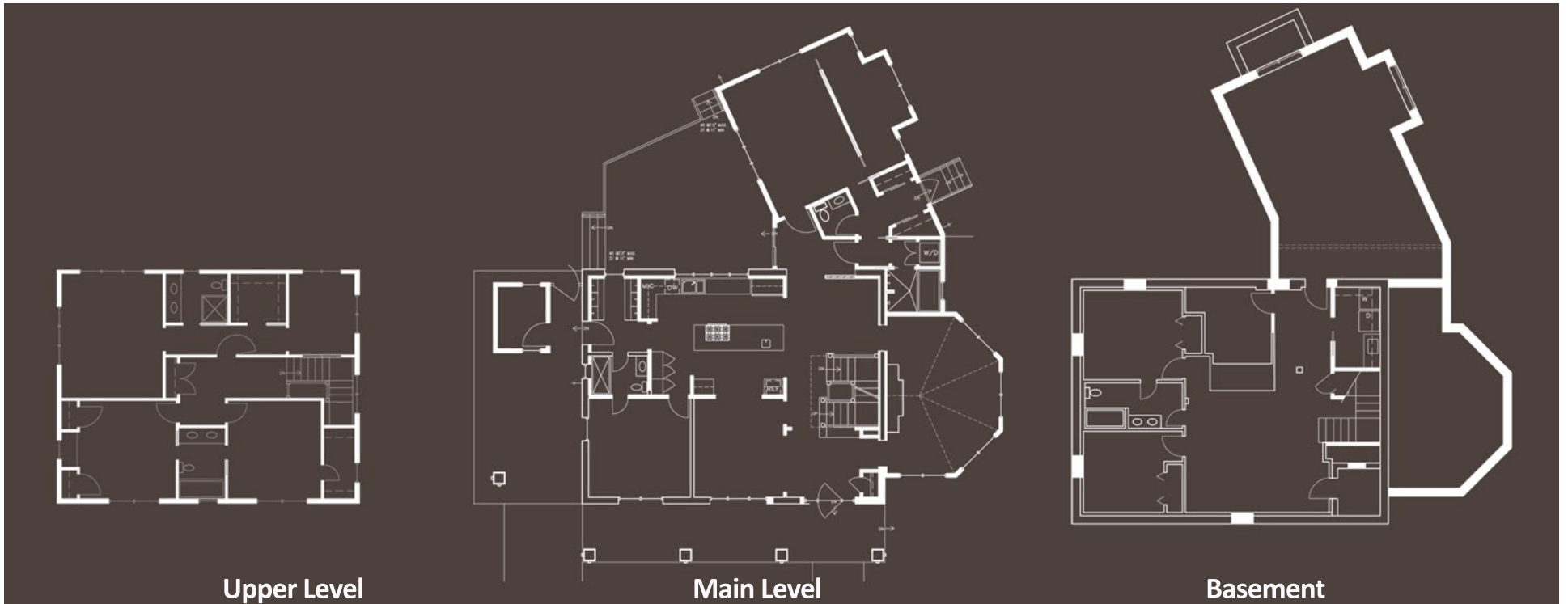
Before Basement Level



Approach from the West



Approach from the South



Upper Level

Main Level

Basement



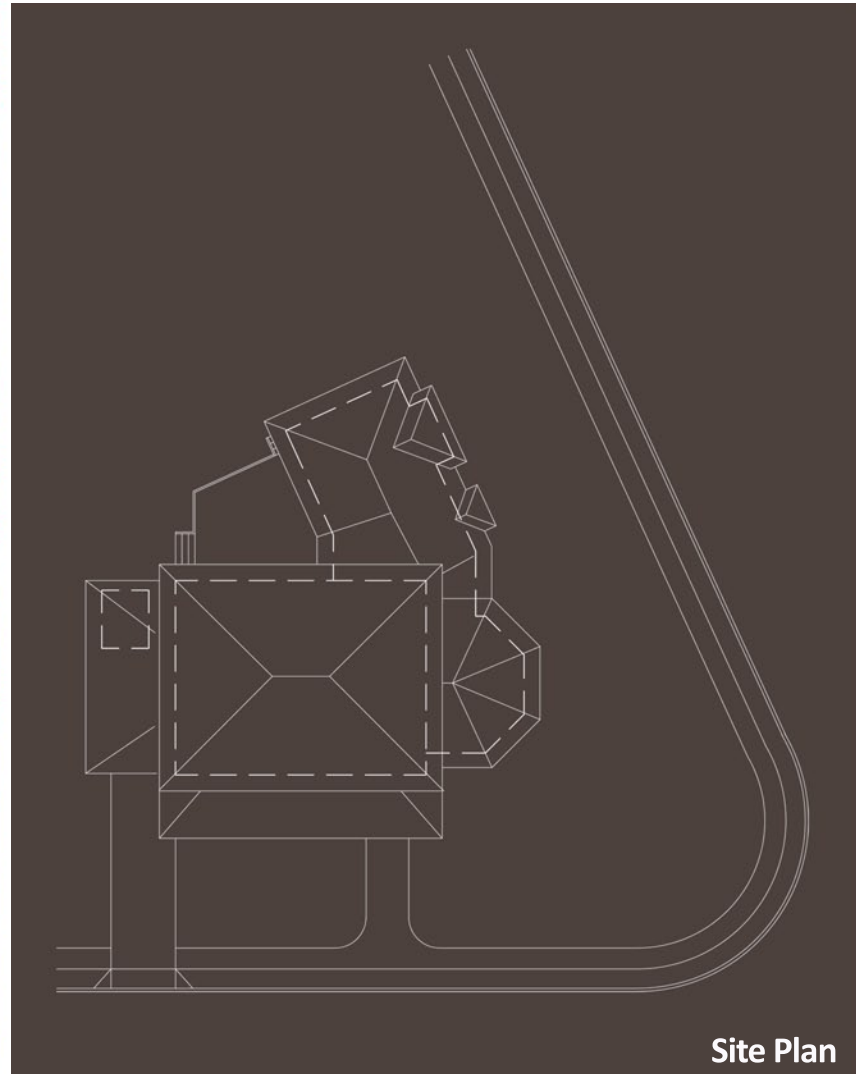
Addressing the corner



Before



One story cottage



Site Plan



Glimpse of Private Court



North Elevation



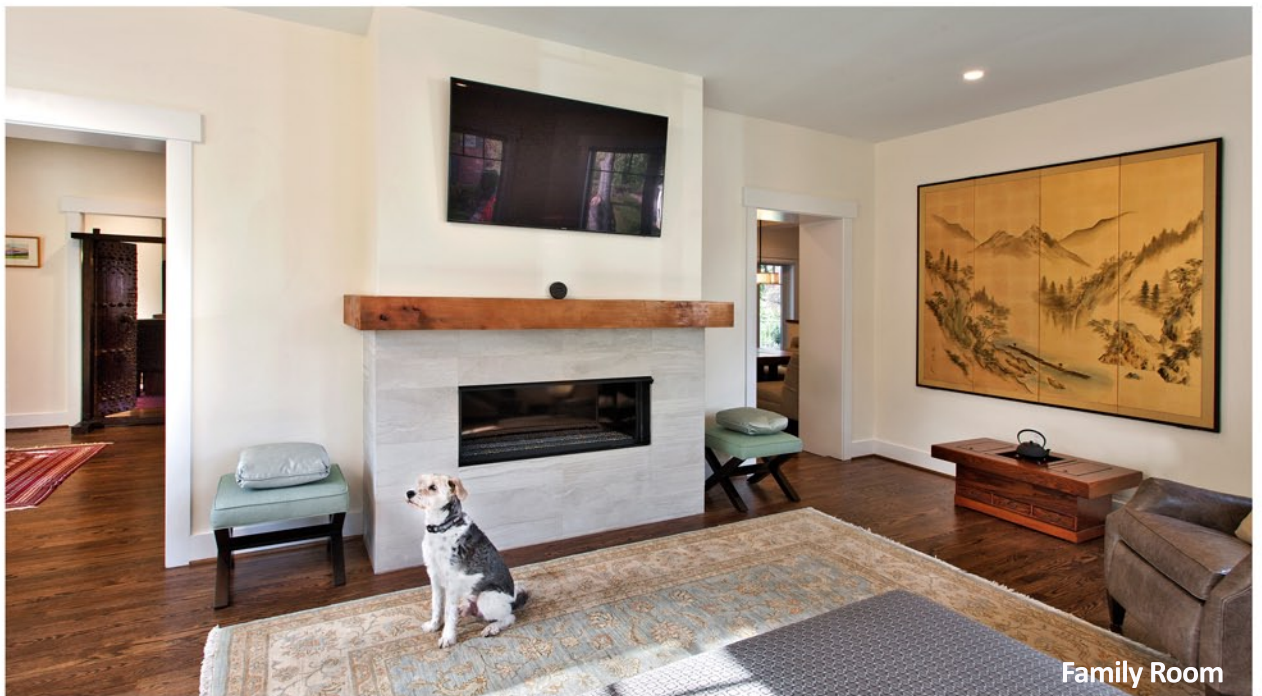
West Elevation



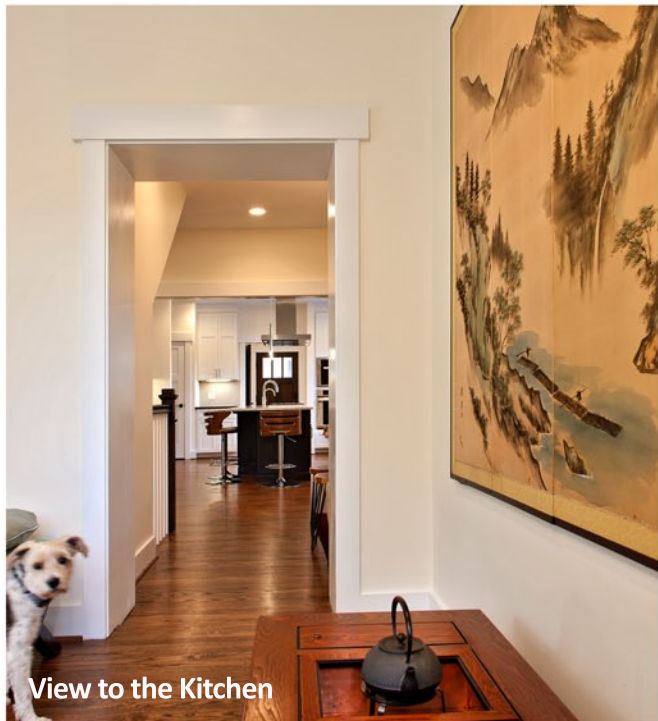
Edgefield Road Front



Vertical circulation



Family Room



View to the Kitchen



Genkan, shoe removal area



Shared space at intersection of two geometries



Antique Japanese doors



Breakfast Area



Dining Room



View from Kitchen to Dining



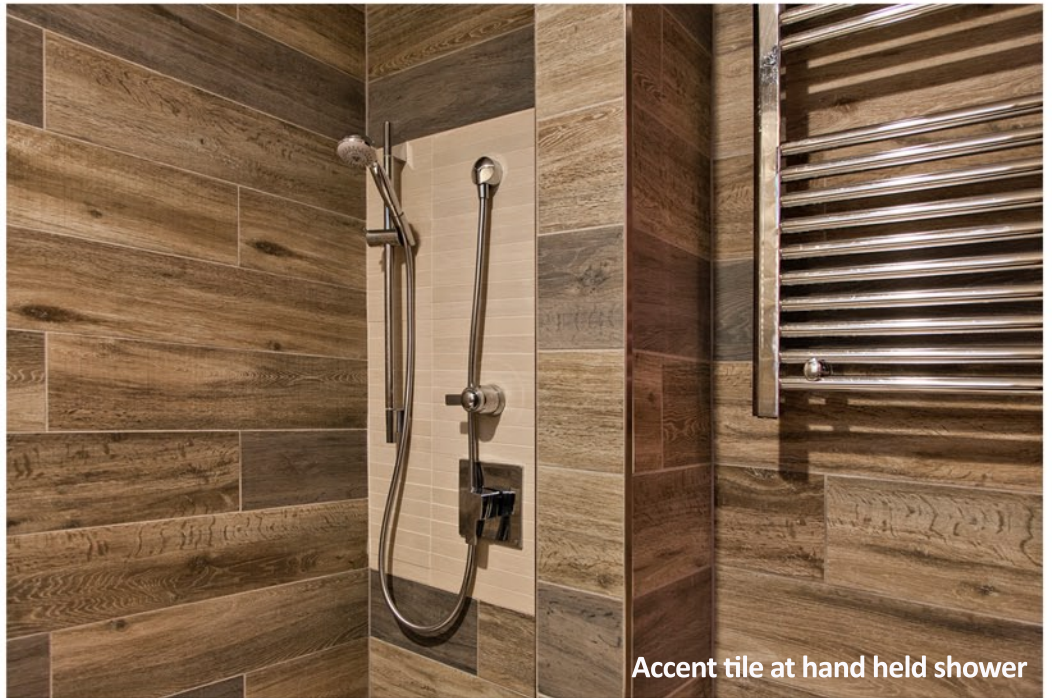
View to Private Court and Cottage beyond



Kitchen



Simple fixtures and materials create serenity



Accent tile at hand held shower



Ofuro, Japanese Bath