

Blackwall Hitch

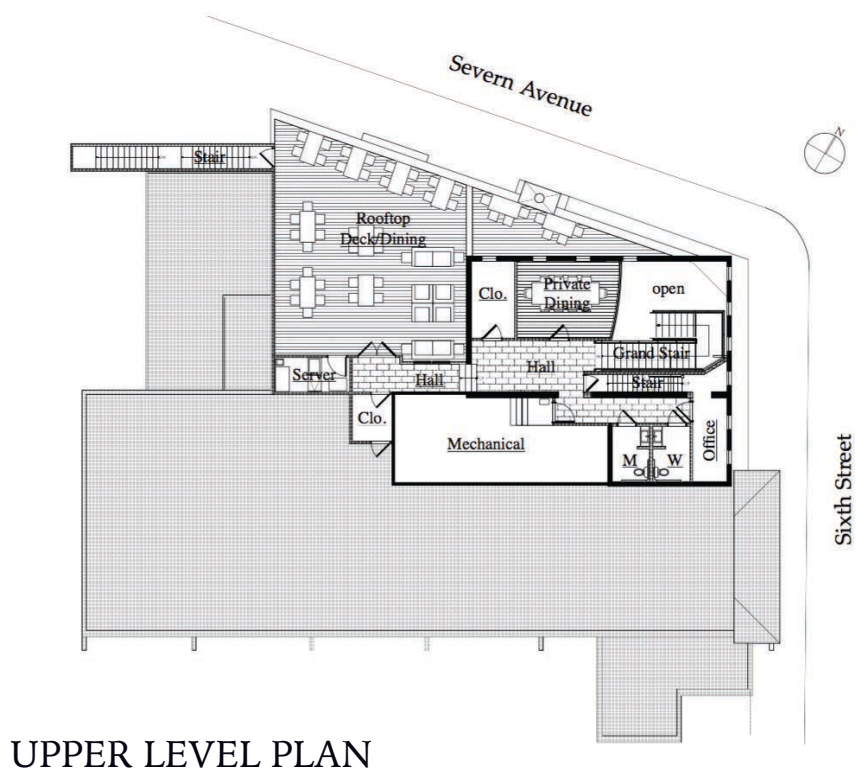
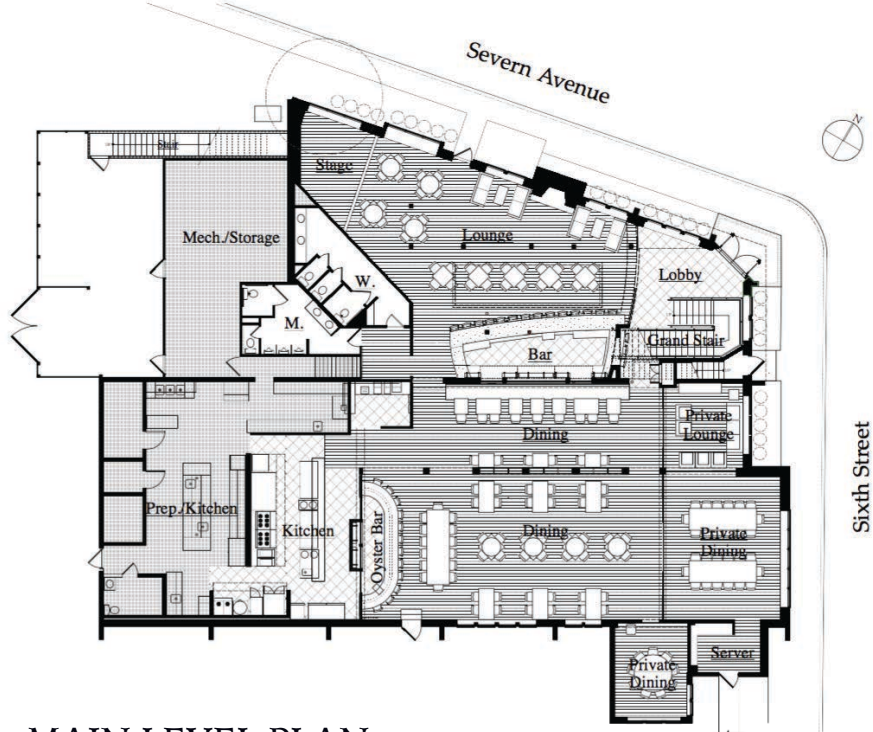
Annapolis, Maryland
Non Residential Renovation



Just over the Spa Creek bridge from downtown Annapolis lies the quirky maritime neighborhood of Eastport. At its gateway and dubiously anchoring its “Restaurant Row” at the corner of Sixth Street and Severn Avenue, stood a worn building that had been home to a long series of less-than-successful bars and restaurants. With large open spaces, its layout was poorly resolved and generally lacking presence and a sense of identity.

New ownership recognized the site’s potential to showcase an upscale, “urban chic” establishment. Site upgrades, including pervious paving, bioretention cells and conservation landscaping, were made with a Water Quality Grant from the Maryland Department of the Environment through cooperation with the Chesapeake Bay Trust, the Spa Creek Conservancy, and the City of Annapolis. A complete renovation of the building involved a new entry with a nautically-themed stair leading to a new rooftop deck, reconfiguration of the bar and dining areas and and a new raw bar. The entire exterior image was redefined to better reflect the maritime character of the neighborhood and to provide more light into the bar.

The building’s reincarnation as Blackwall Hitch -- with its welcoming spaces, outdoor rooftop dining, ample parking and live music -- has been welcomed by locals and tourists alike.



Unifying Disparate Components



Both the exterior and interior employ a simple black and white color scheme that unifies the previously disjointed-looking building. The new architecture of the front façade extends the entry all the way to the chimney, anchoring the chimney to the building and tying together disparate components.

Upstairs, the railing for the rooftop deck blends into the architecture of the building and follows the line of the street. The combined wall and cable railing provides views from the upper deck as well as separation and privacy from street traffic below.

A curved wall of etched glass provides separation between the entry and the bar. Casement windows and transoms allow natural light to flood the space.



Before



Before



Opening Space,
Vertically

A dramatic double-volume entry greets visitors and allows views into the spaces within.

A broad, open-tread stair leads to rooftop dining above.

Revealing Hidden Character



An open wall defines two distinct seating areas in the main dining room. Drop ceiling finishes were removed to expose existing structure beneath, adding character and depth to the space.

Privacy, with Openness



Around the perimeter of the main dining room are three uniquely furnished private dining rooms.

Sliding window walls, softened with gauzy curtains, maximize the flexibility, utility and warmth of these additional spaces.





Juxtaposition of Angles and Curves

In the main dining room, a marble-topped oyster bar is a craftsman-like centerpiece. Both bars are given curvilinear forms to help contrast the sharp angular nature of the existing building and the site.

A glass back bar provides an open view to the kitchen behind.

Richness Through Contrast

In the pub, an awkward horseshoe-shaped bar was replaced with a curved bar. Ceiling forms follow the bar's structure, adding interest to the volume of the space.

Varied materials, including stainless steel, wood, Carrara marble, black-painted metal, mirror and glass, are layered to create depth and richness.

Before



Prismatic Interest

A translucent glass wall back bar is shared with the main dining room, allowing the two spaces to feel simultaneously separate from, yet connected to, each other.





Additional private space is provided upstairs, along the route to outdoor dining on the roof deck.

Proximity to water is what defines Eastport. In warmer months, the most coveted seating in the restaurant is on its new rooftop deck. This multi-level space offers unique views of Spa Creek, sailboats, the U.S Naval Academy and historic downtown Annapolis beyond.



A Destination

