



1501 North Gay Street | A Social Incubator

Baltimore, Maryland

Graduate Submission, Studio Project

1501 North Gay Street is a social incubator for a troubled Baltimore neighborhood. It provides a focal point for residents, activists, and organizers to develop their voices and amplify their cultural and political power. Residents will gather in a variety of contexts and express themselves in a variety of formats. There will be a café for meeting and learning, a gathering space for more organized events, space for visual arts and advocacy, spaces for lectures and performances, educational space, and mechanisms for community outreach. The center will provide a flexible space for the future needs of a changing community.

The triangle is the primary statement of the site and the built solution. The structure occupies the entire site, while simultaneously preserving the site as a public amenity. The enclosed space exploits the natural slope to create a volume that emerges from the ground, creating two distinct environments—above and below.

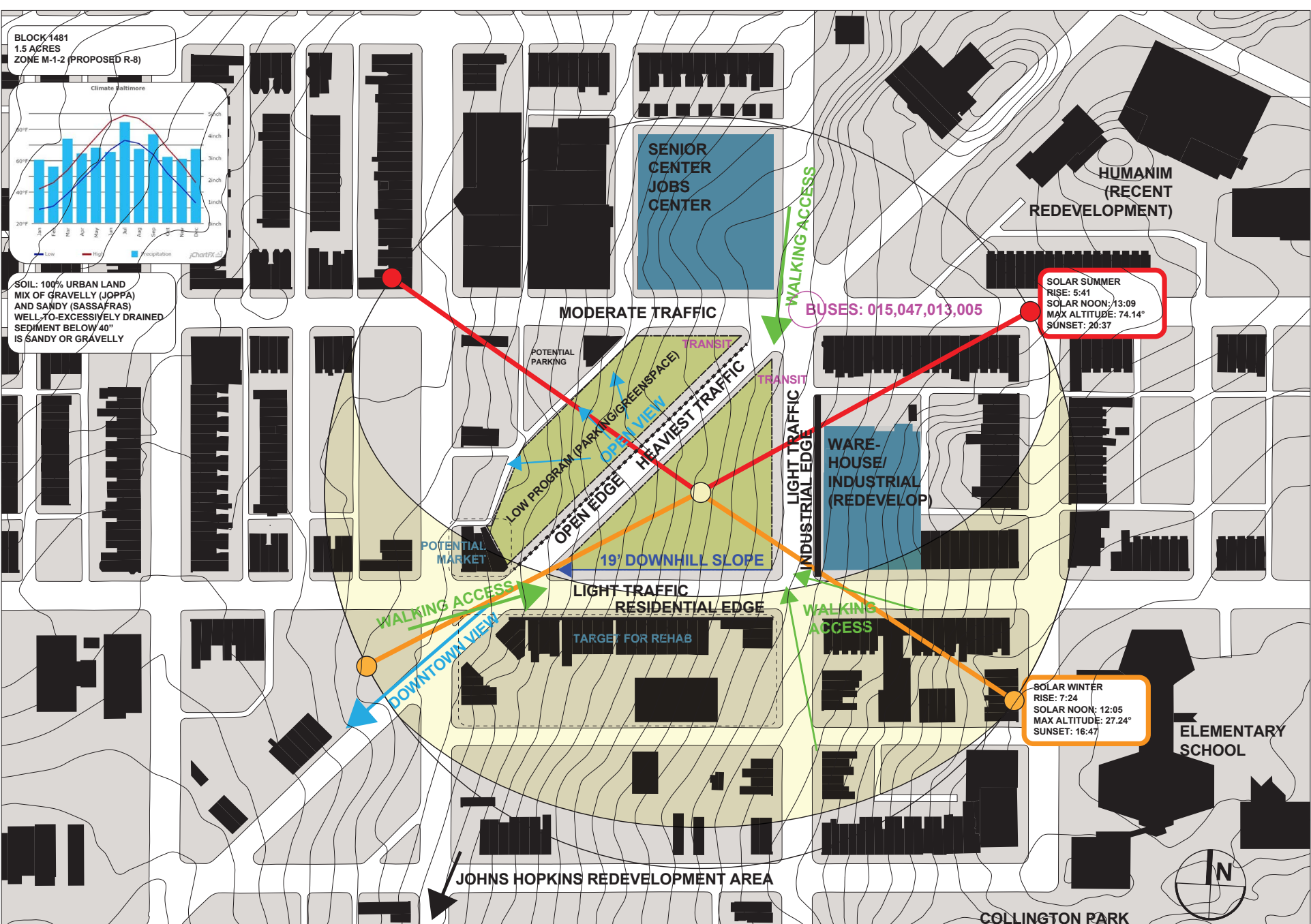
The upper level park is continuously accessible from the east. The slope of the site is countered by a gentle upward slope, rising to the southwest corner. The park includes a cafe, the first of many opportunities to gather and share ideas. The cafe is connected to the main hall by an interior stair. A light well with water above and below occupies the center of the site. To the south, the theater pierces the upper level, separated by a continuous skylight. At the southwest corner, the site is its most secluded and its most dramatic, with elevated views of the city.

The lower level features a large covered entrance. Inside, the space is composed of various types of space, for a variety of activities. There are galleries and a large informal hall, learning spaces, and a theater. The light well opens to the hall for a pleasant escape.



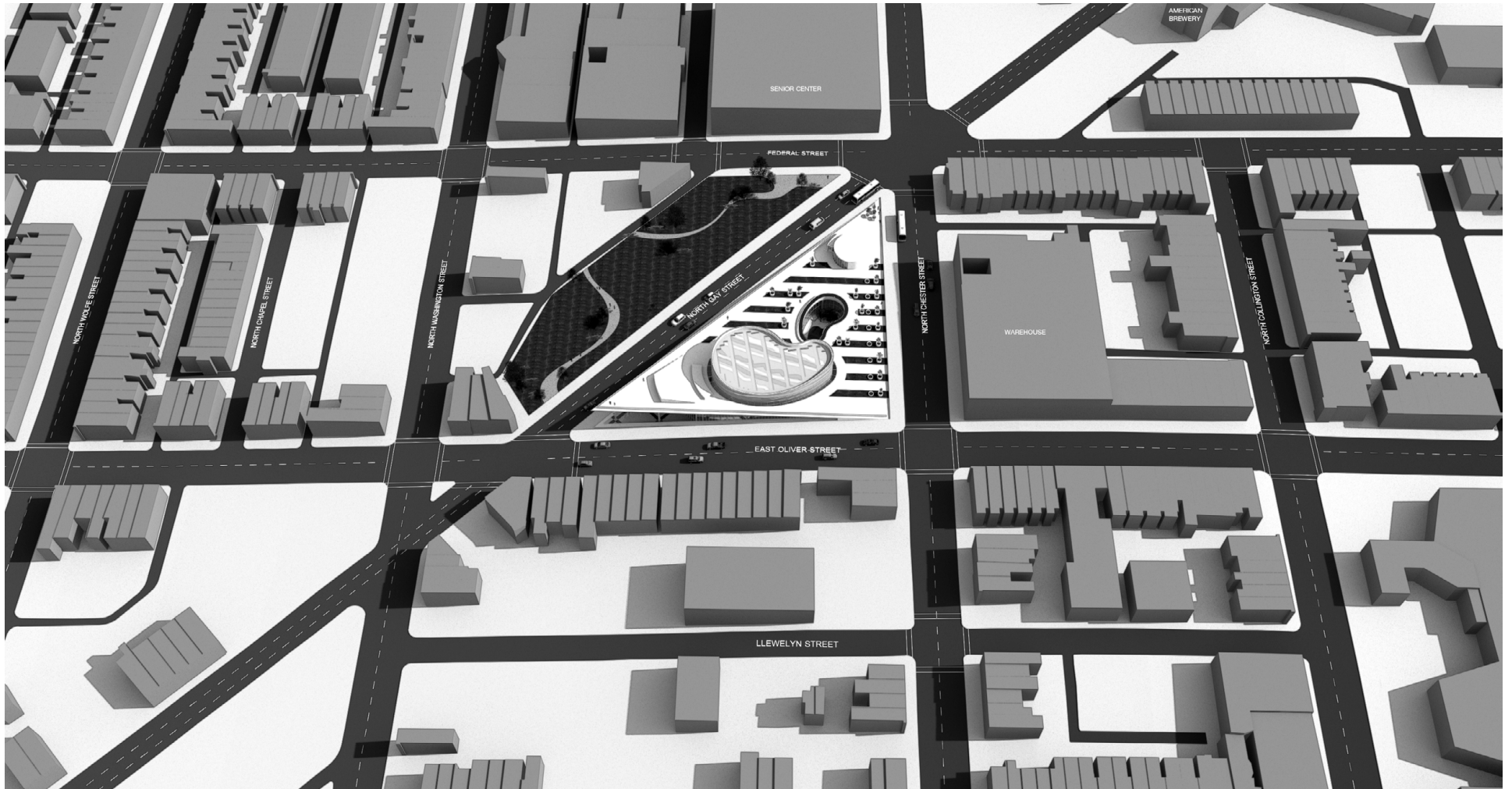
Community is a lost concept for the historic Baltimore neighborhood of Broadway East, north of Johns Hopkins hospital. Top-down efforts at renewal have failed here, as in so many other communities. What has shown promise elsewhere is the direct engagement and empowerment of residents in making their own choices. Even the most distressed communities include people who want to make an impact. In these difficult times, new voices are emerging to be heard by a wider audience.

1501 North Gay Street | A Social Incubator



Site Analysis: Broadway East

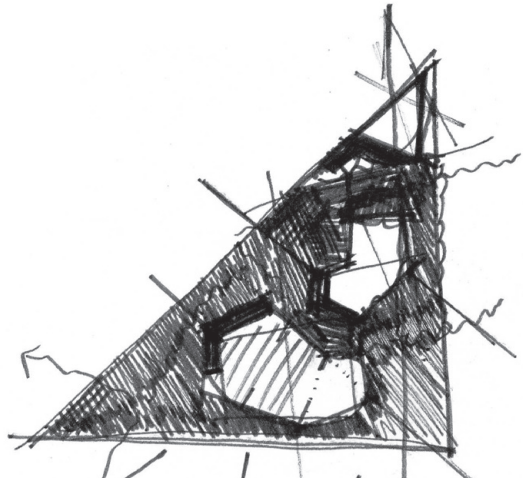
1501 North Gay Street | A Social Incubator



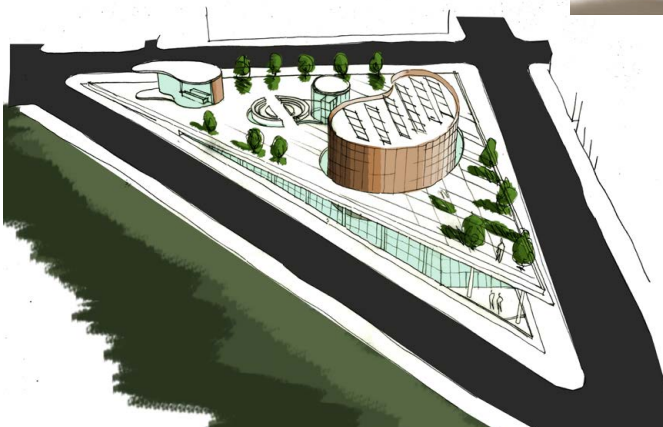
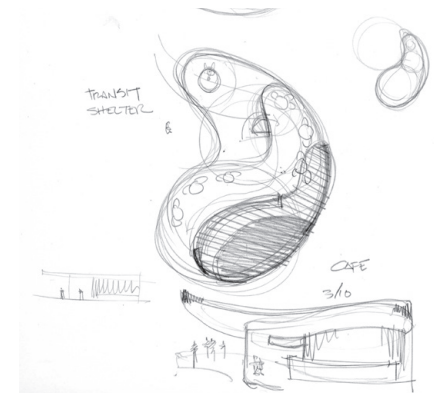
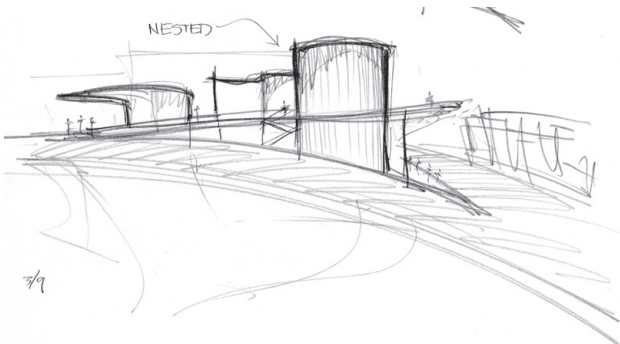
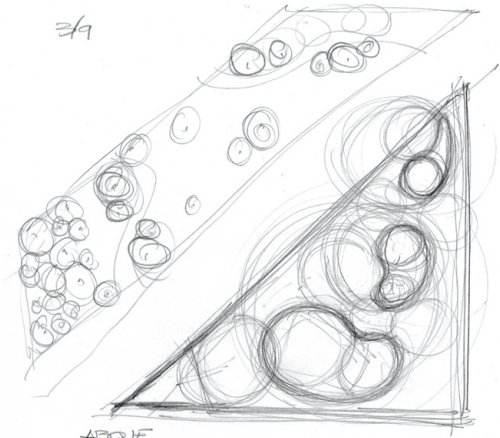
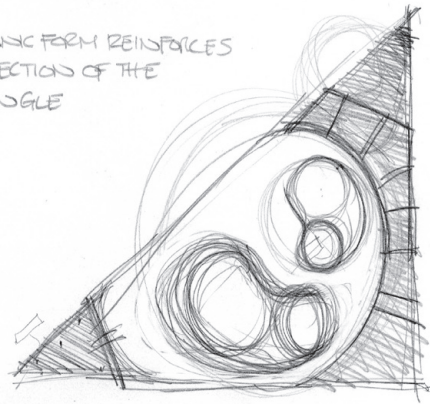
Site: Broadway East



1501 North Gay Street | A Social Incubator



ORGANIC FORM REINFORCES
PERFECTION OF THE
TRIANGLE

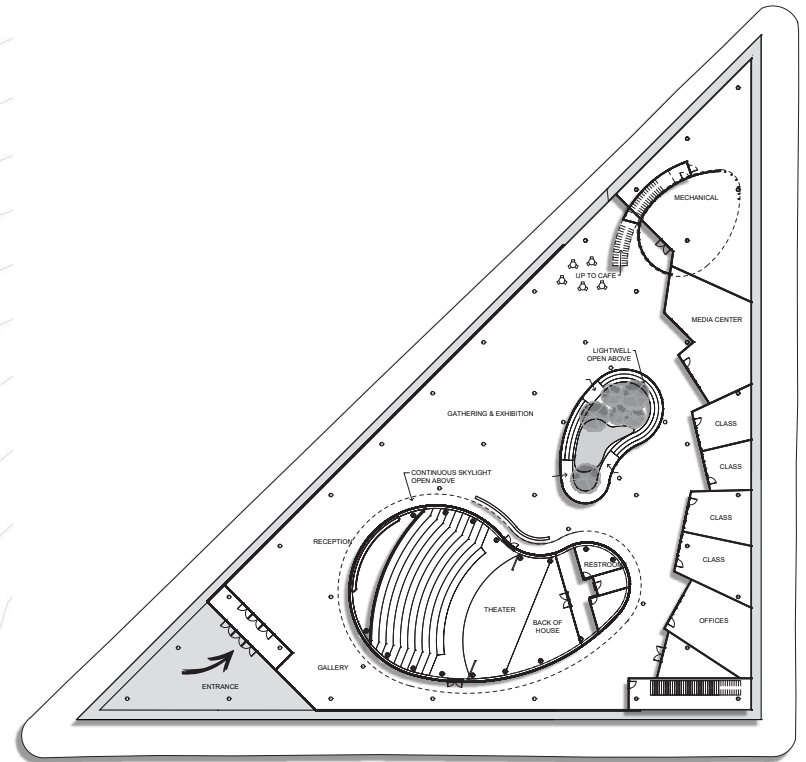


1501 North Gay Street | A Social Incubator



Upper Level

The upper level park is continuously accessible from the east. The park rises gently to the southwest corner. The cafe is connected to the main hall by an interior stair. A light well with water above and below occupies the center of the site. To the south, the theater pierces the upper level, separated by a continuous skylight. At the southwest corner, the site is its most secluded and its most dramatic, with elevated views of the city.



Lower Level



The lower level features a large covered entrance. Inside, the space is composed of various types of space, for a variety of activities. There are galleries and a large informal hall, learning spaces and a theater. The light well opens to the hall for a pleasant escape.

1501 North Gay Street | A Social Incubator

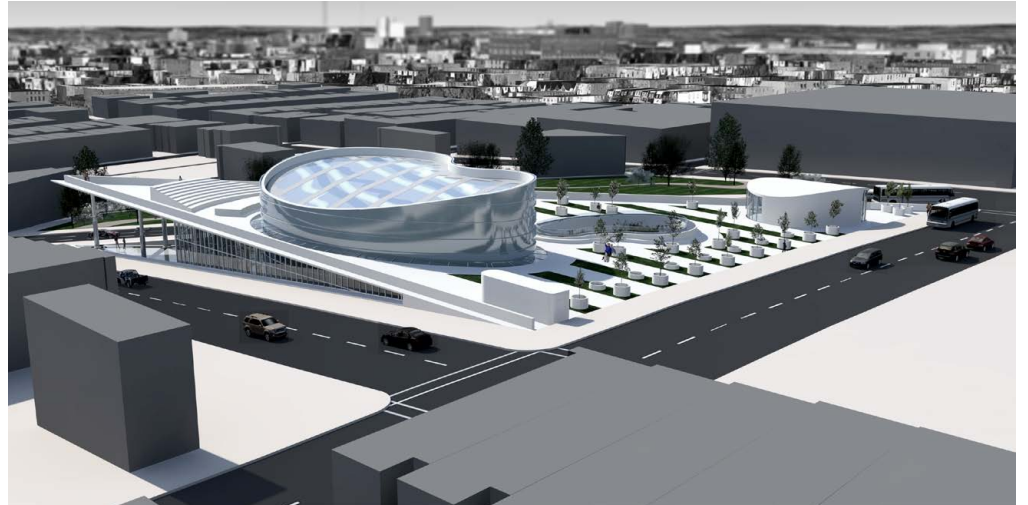


Overview from West

1501 North Gay Street | A Social Incubator



Northeast



Southeast



Southwest

1501 North Gay Street | A Social Incubator



West

1501 North Gay Street | A Social Incubator



Interior

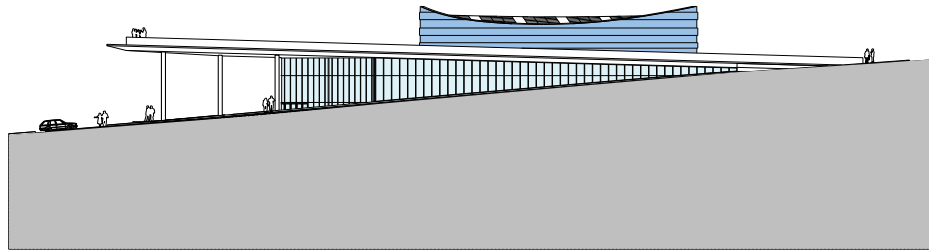


Reception

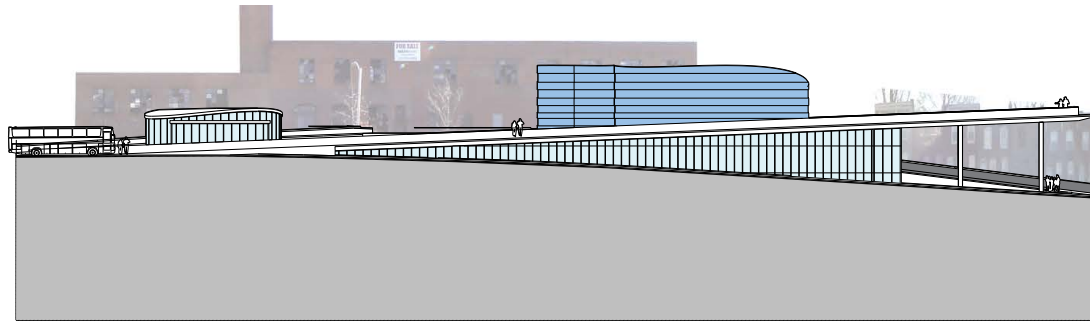


Light Well

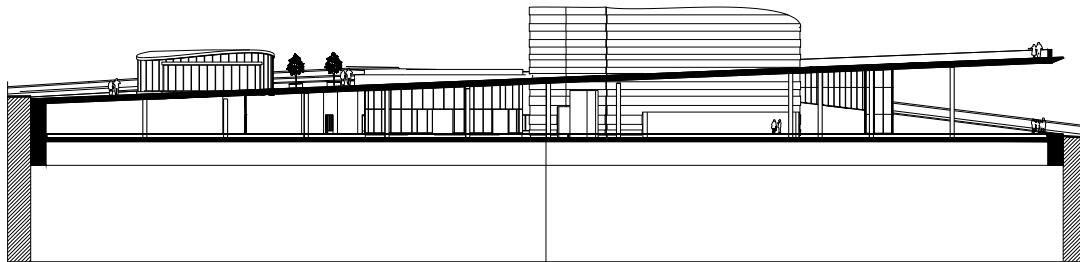
1501 North Gay Street | A Social Incubator



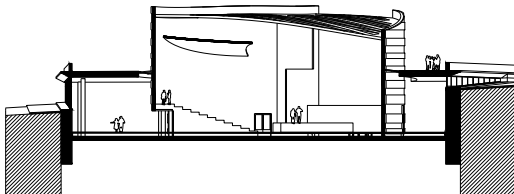
South Elevation



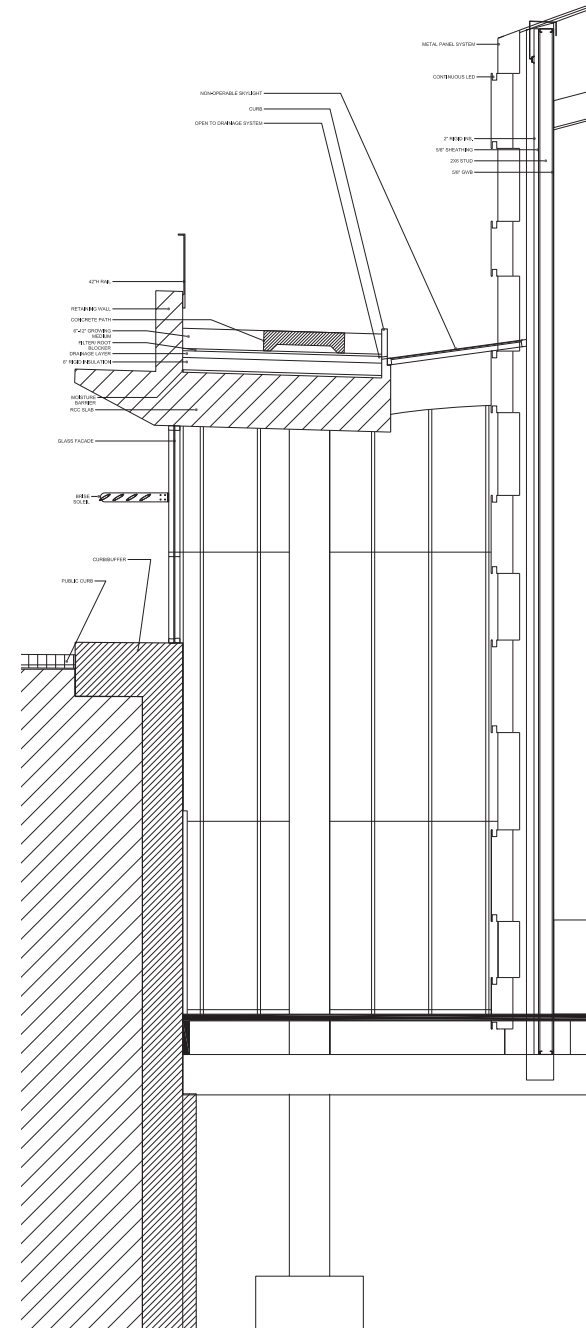
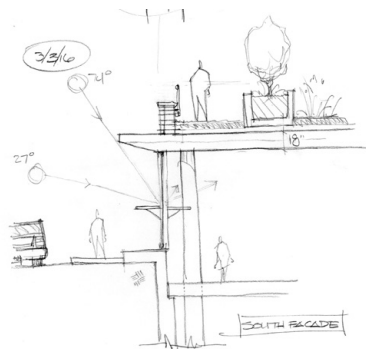
Northwest Elevation



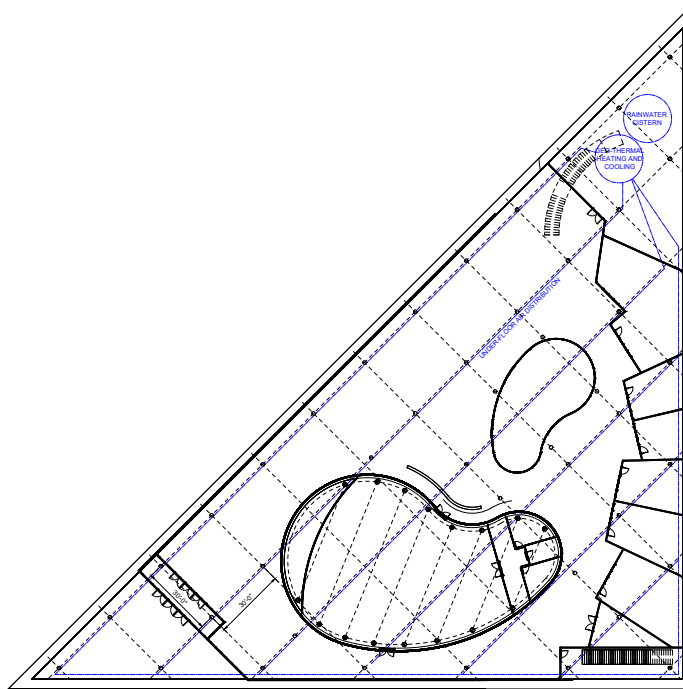
Section A-A'



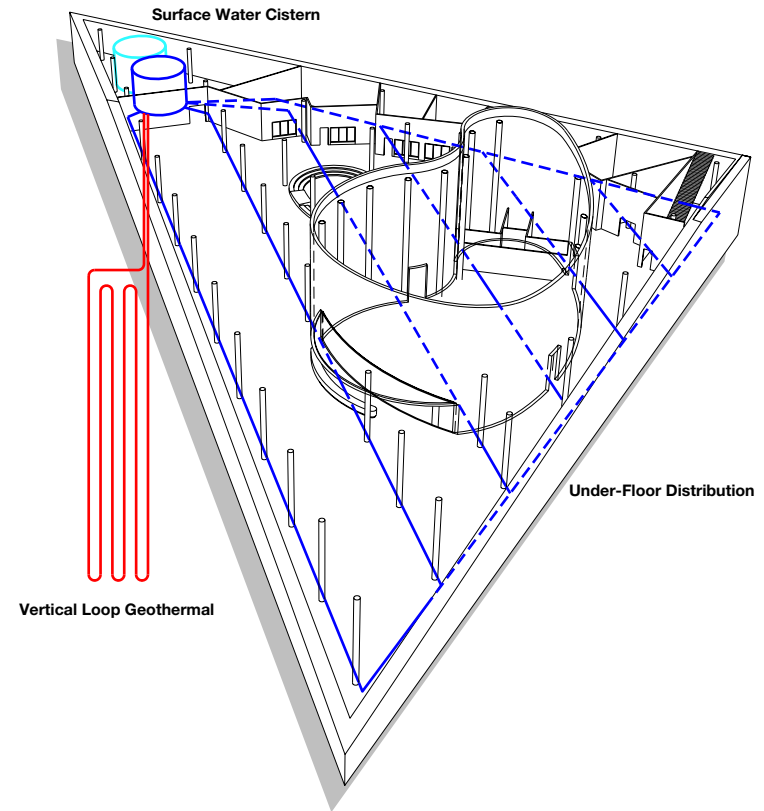
Section B-B'



Section C-C'



Structure & Systems Plan



Key Materials

Cast-In-Place Concrete (Main Structure)
 Glass
 Steel Truss (Theater)
 Light Gauge Steel Framing (Theater)
 Aluminum (Theater)
 Wood (Interior)
 Grass, Indigenous Plants, Small Trees

Mechanical & Environmental Systems

Underfloor Air-handling
 Geo-Thermal Heating and Cooling
 Solar PV
 Ground Water Retention/Re-use
 Natural Light
 Brise Soleil

Thank you for your time and consideration.