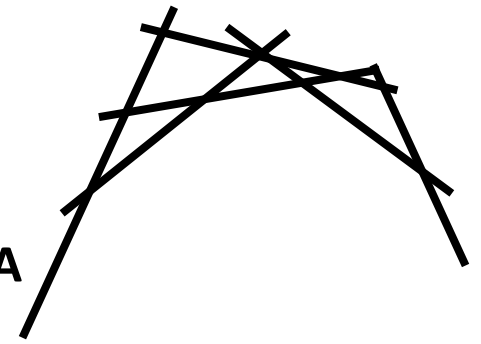


CHAPEL OF COLLECTION

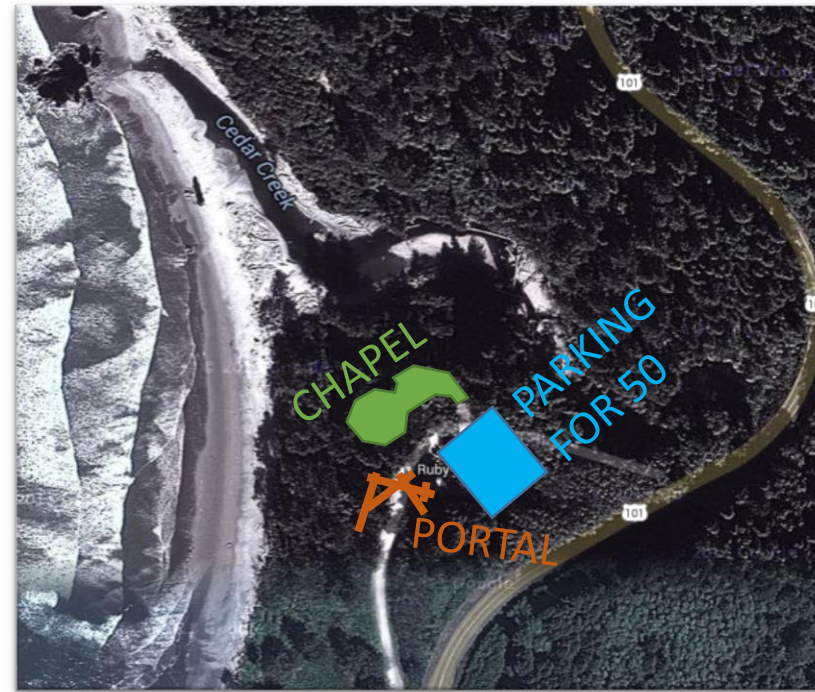
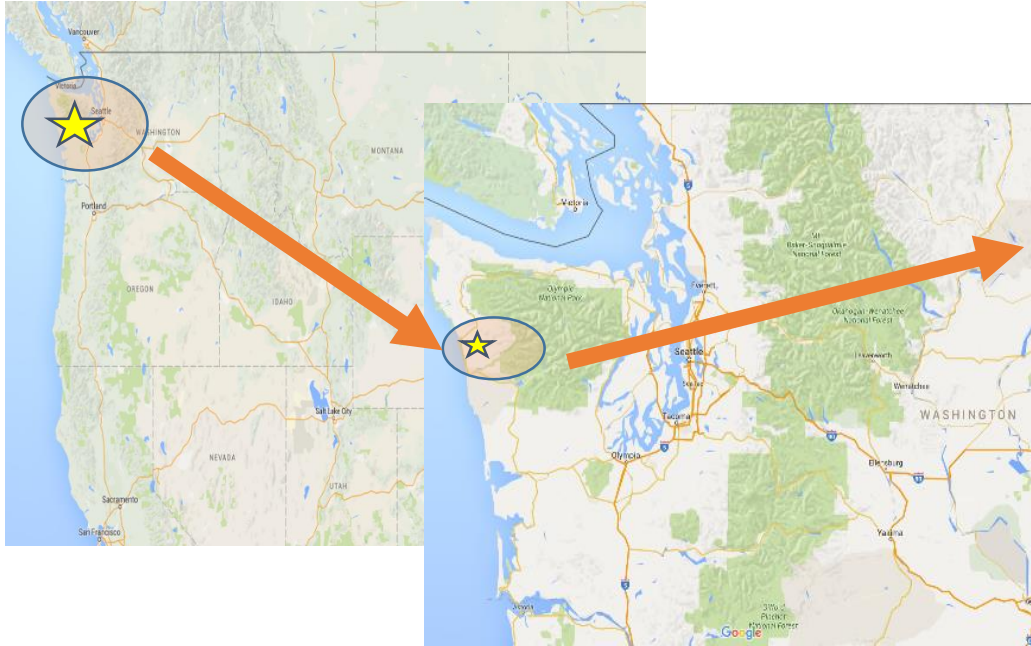
PORT ANGLES, WASHINGTON ON THE OLYMPIC PENNINSULA UNDERGRADUATE SUBMISSION – STUDIO PROJECT



The assignment was to design an interfaith chapel that guided patrons from portal entry to path and finally to arrival at the chapel. The location was to be set in a National Park and derive inspiration from the unique feature of the surrounding environment. Enormous driftwood logs collect in the protective cove formed by Cedar Creek from the changing tides creating different gathering areas for these logs. This becomes the concept, expressing tidal forces that collect the logs. The portal, made of existing logs from the cove, signifies the beginning of the collection and serves as the entrance into the cove. The path from portal to entrance of the chapel is surrounded by high and dense trees, furthering the concept of the cove and protection. The façade and roof line were designed to create a sense of collecting elements to form a meaningful and protective space. Once in the lobby, one will experience the raised clerestory roof to express the tall surroundings of the cove while the south facing wall uses stepped glass panels as one heads toward the chapel, thus further emphasizing the idea of collecting in a protected space. Appealing to sustainability, the chapel uses rainwater collection and filtration to help achieve L.E.E.D. gold goal. The F.S.C. certified heavy timber support for the building emphasizes the symbolism of the protection and security that is found in the covering trees of the cove. The large wooden beams and columns connect and intersect at geometrically calculated locations creating the sense of collection in the center of the chapel. Clerestories bring natural light into the chapel, symbolizing holes in the forest canopy. The wood interior will help to softly reflect that light and create a solemn and dimly lit space for reflection and collection.



LOCATION AND SITE



SITE PLAN

- NORTHWESTERN COASTLINE OF WASHINGTON
- ACCESS FROM 101 Olympic Highway
- ¼ MILE HIKE TO BEACH AND TIDAL PONDS OF CEDAR CREEK
- 3 MILE HIKE NORTH TO MOUTH OF HOH RIVER



STREET VIEW OF SITE FOR PORTAL

INSPIRATIONAL IMAGERY



LOGS COLLECTING ALONG SHORE



VIEW OF BEACH FROM CHAPEL SITE

PARTI DEVELOPMENT



LOGS COLLECT AT DIFFERENT LEVELS DUE TO THE CHANGING TIDES. THE CURRENTS FLOW OVER THE COLLECTED LOGS AND STACK THEM UPON ONE ANOTHER IN FLUID FORMS.

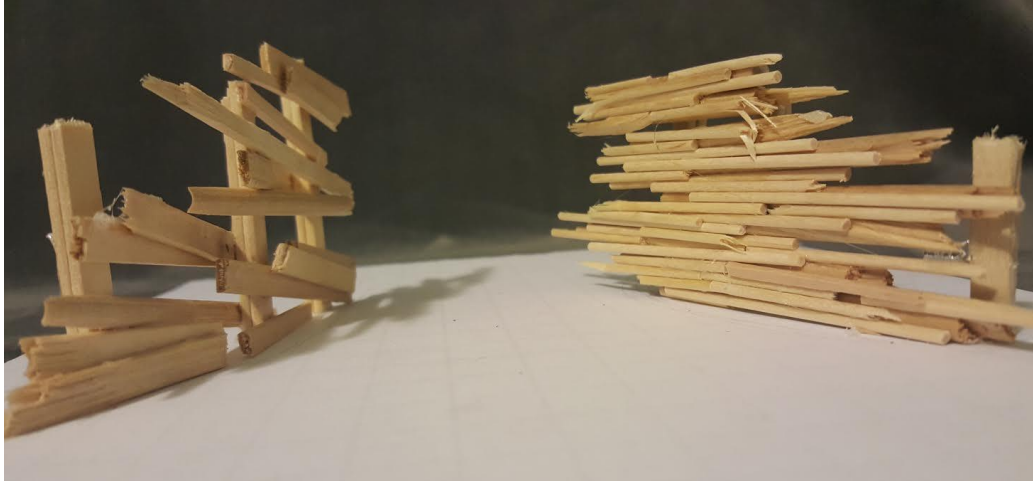


INSPIRATIONAL MASSING MODEL



SKETCH OF MASSING

PORTAL



PRELIMINARY PORTAL MODEL



PRELIMINARY PORTAL PARTI

THE PORTAL SERVES AS
THE ENTRANCE INTO THE
COVE AND IS SYMBOLIZES
THE BEGINNING OF
COLLECTION



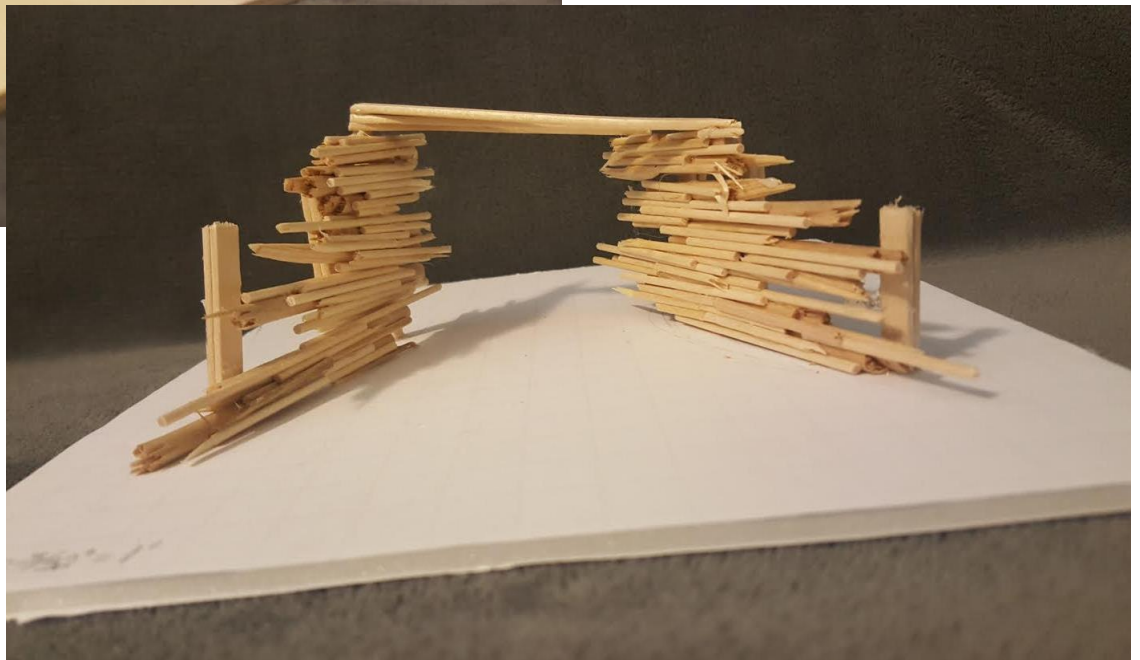
PORTAL MODEL STUDY

PORTAL DEVELOPMENT

THESE PRELIMINARY PORTAL MODELS FOCUSED ON THE LOGS AND STUDYING THEIR RELATIONSHIP WITH EACH OTHER THAT WOULD HELP EXPRESS THE ORGANIC FORMS OF COLLECTION WHILE STILL APPEARING AS ORGANIZED ARCHITECTURAL ELEMENT.



PORTAL MODEL STUDY

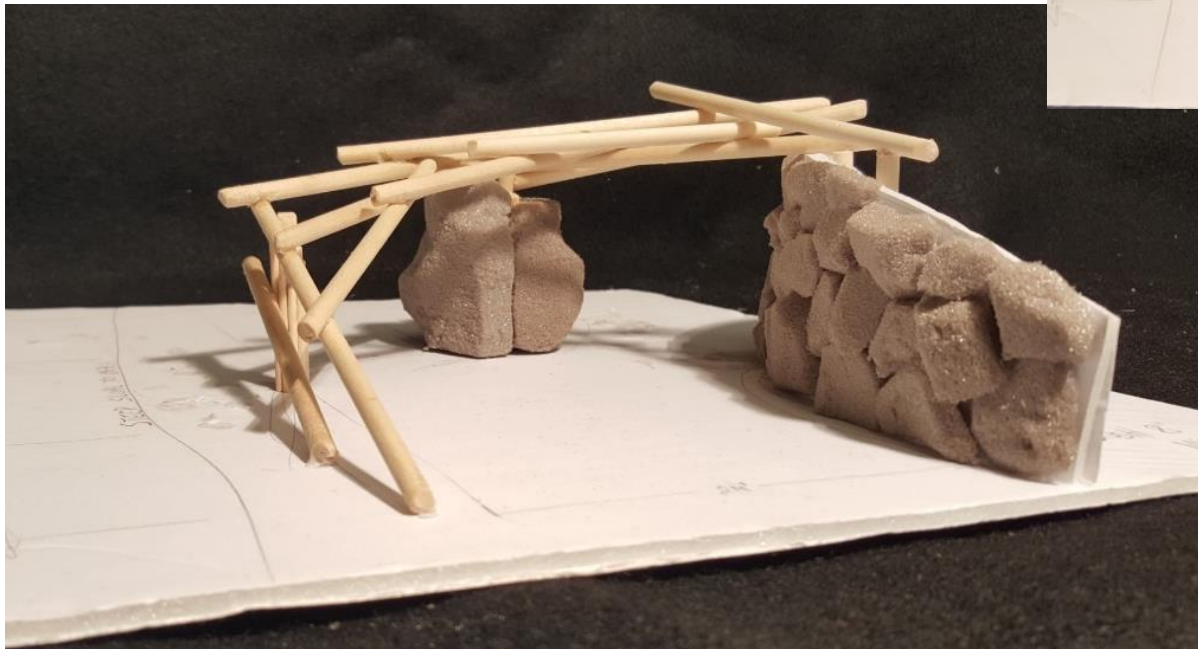


PORTAL MODEL STUDY

FINISHED PORTAL

FINAL PORTAL INCORPORATES ROCKS TO
SHOW SUPPORTIVE RELATIONSHIP WITH LOGS

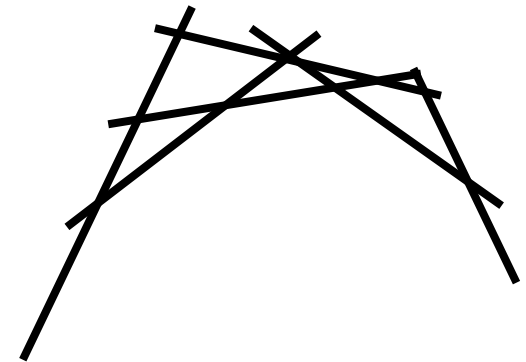
LOG INTERSECTIONS AT GEOMETRIC DISTANCES
INSPIRED BY THE FIBONOCCHI SEQUENCE



PICTURE OF PORTAL MODEL

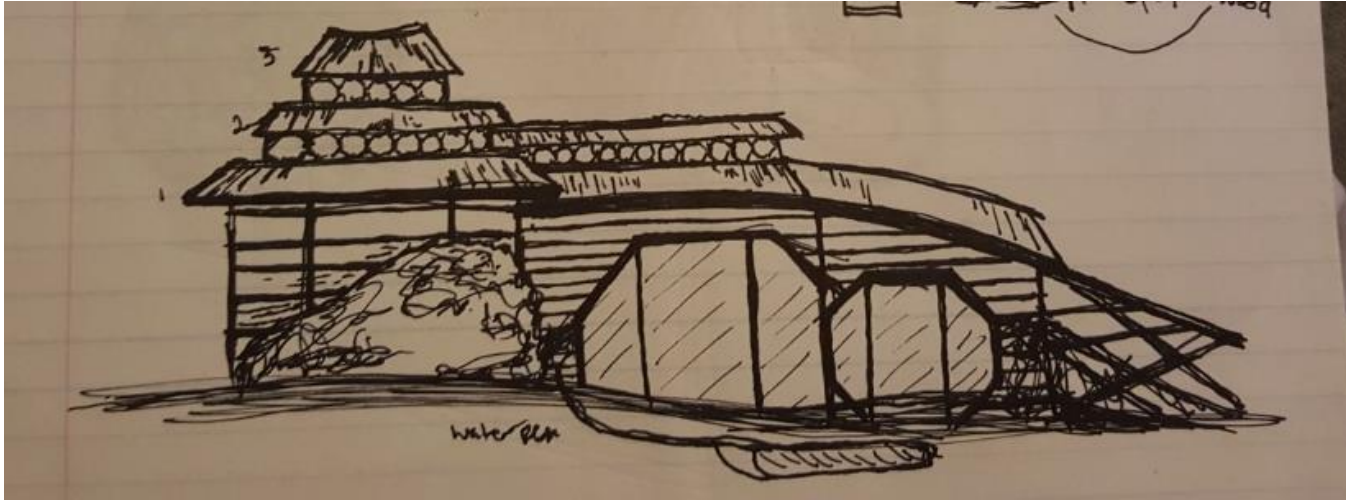


PLAN OF PORTAL



FINISHED PORTAL PART I

CHAPEL SCHEMATICS

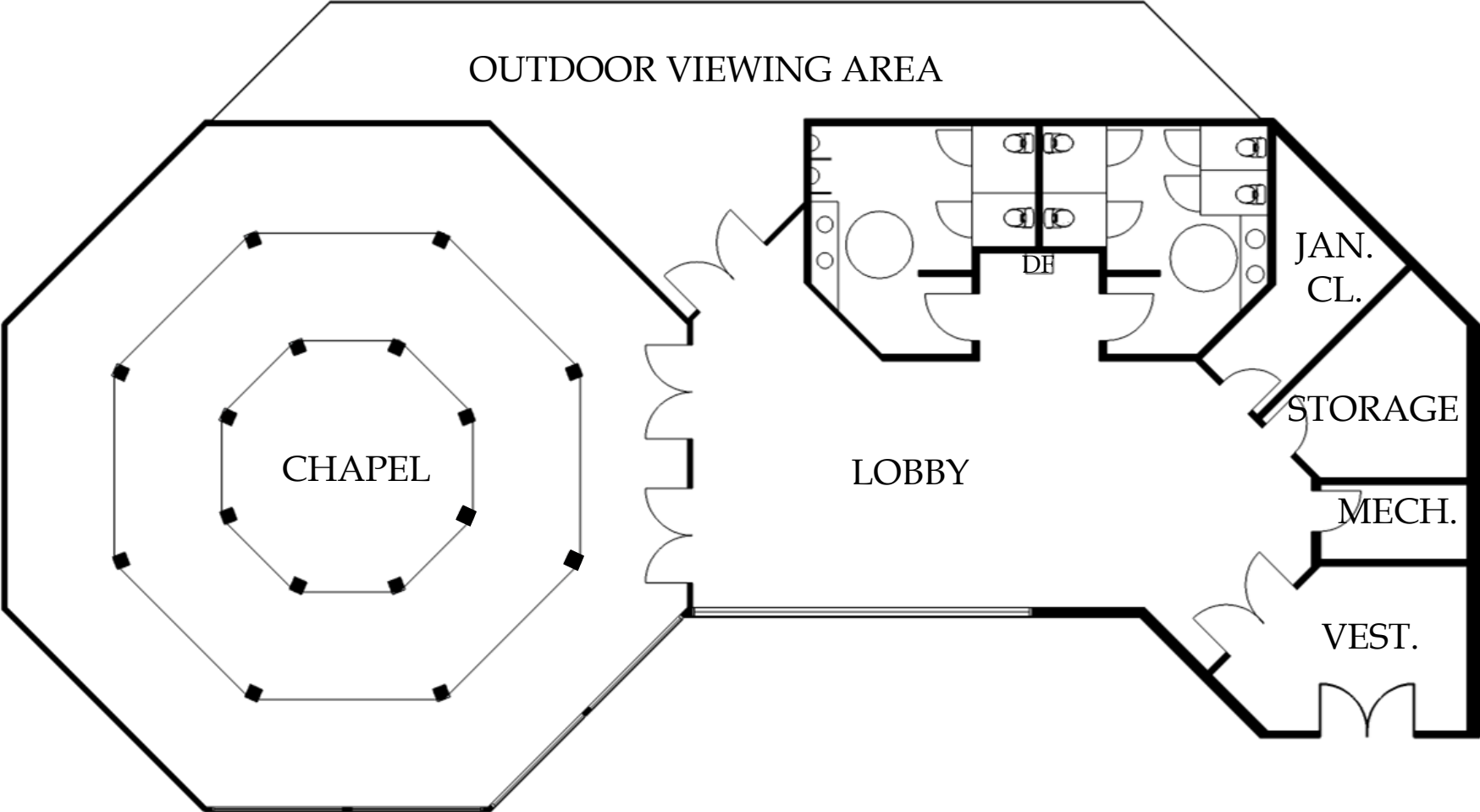


SKETCH STUDY OF SOUTH ELEVATION



MASSING MODEL

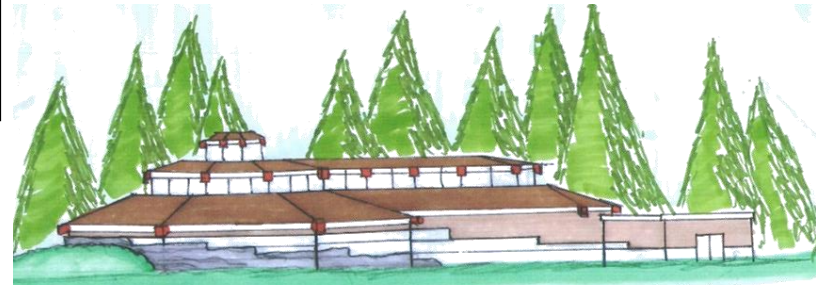
CHAPEL FLOORPLAN



CHAPEL EXTERIOR

THE FAÇADE SYMBOLIZES THE LOGS ELEVATING WITH THE TIDES AND COLLECTING IN THE COVE

THE CLERESTORIES ELEVATE THE ROOFS TO DIFFERENT LEVELS SYMBOLIZING THE LOGS COLLECTING ON TOP OF EACH OTHER IN THE COVE



SOUTHERN ELEVATION SKETCH

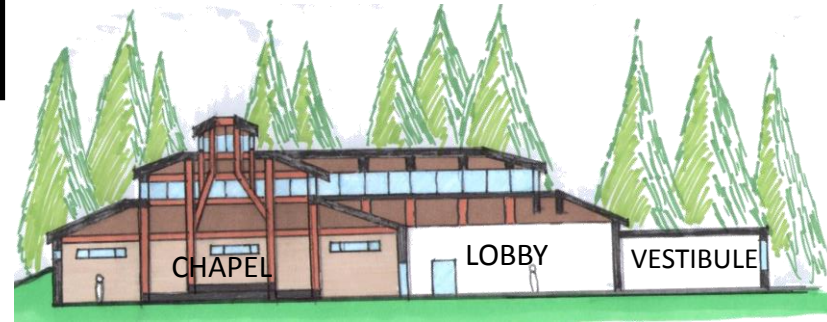


EXTERIOR RENDERING

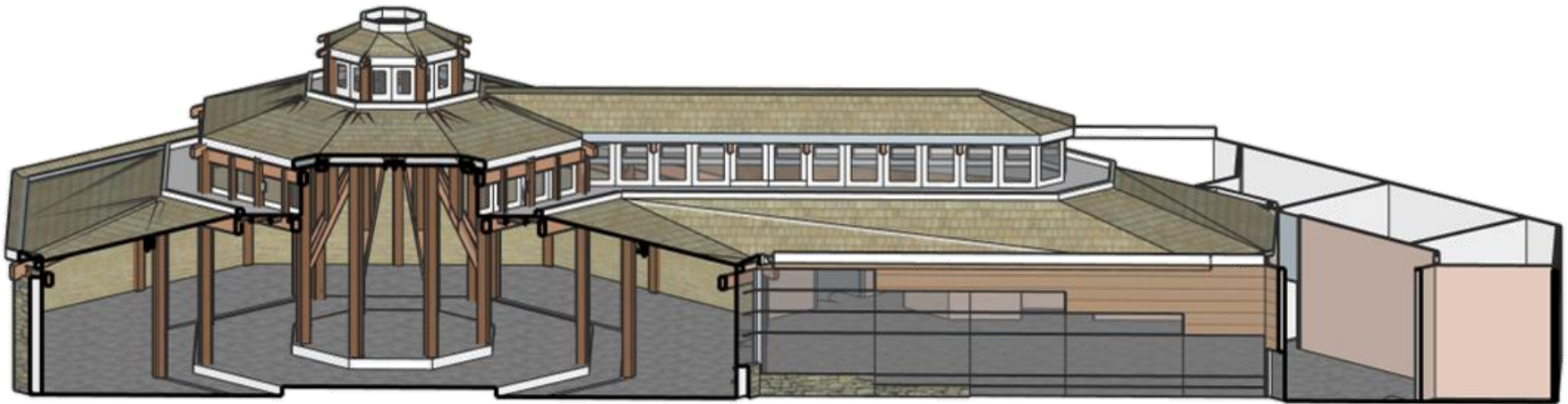
CHAPEL SECTIONS

THE SECTION SHOWS THE USE OF F.S.C. HEAVY
TIMBER TO SUPPORT MULTIPLE CLERESTORIES

THE CHAPEL AREA SYMBOLIZES THE
PROTECTION OF THE COVE WITH WOOD
COLUMNS STRETCHING UP AND BRANCHING
OUT TO SUPPORT THE ROOF

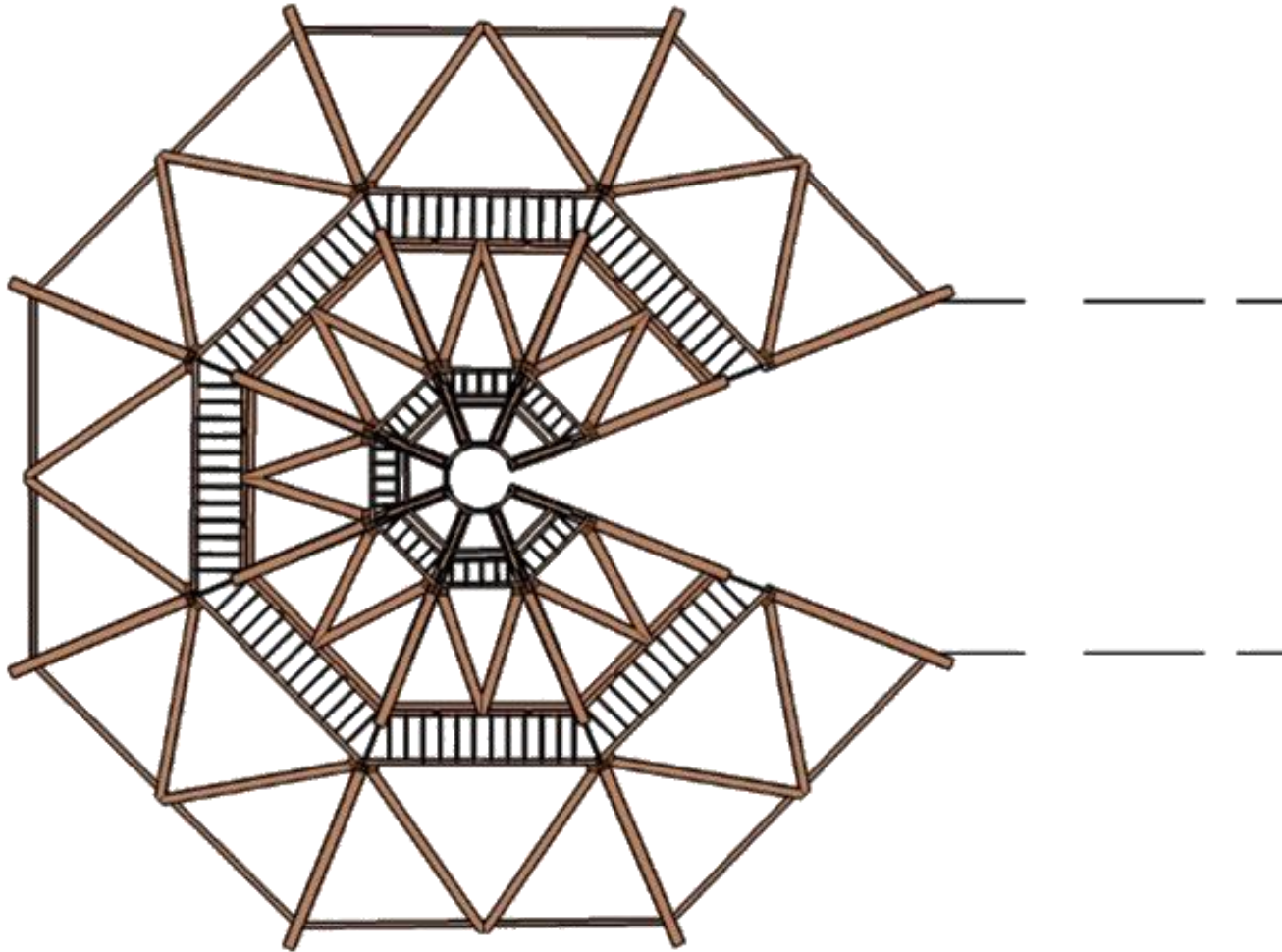


SECTION SKETCH



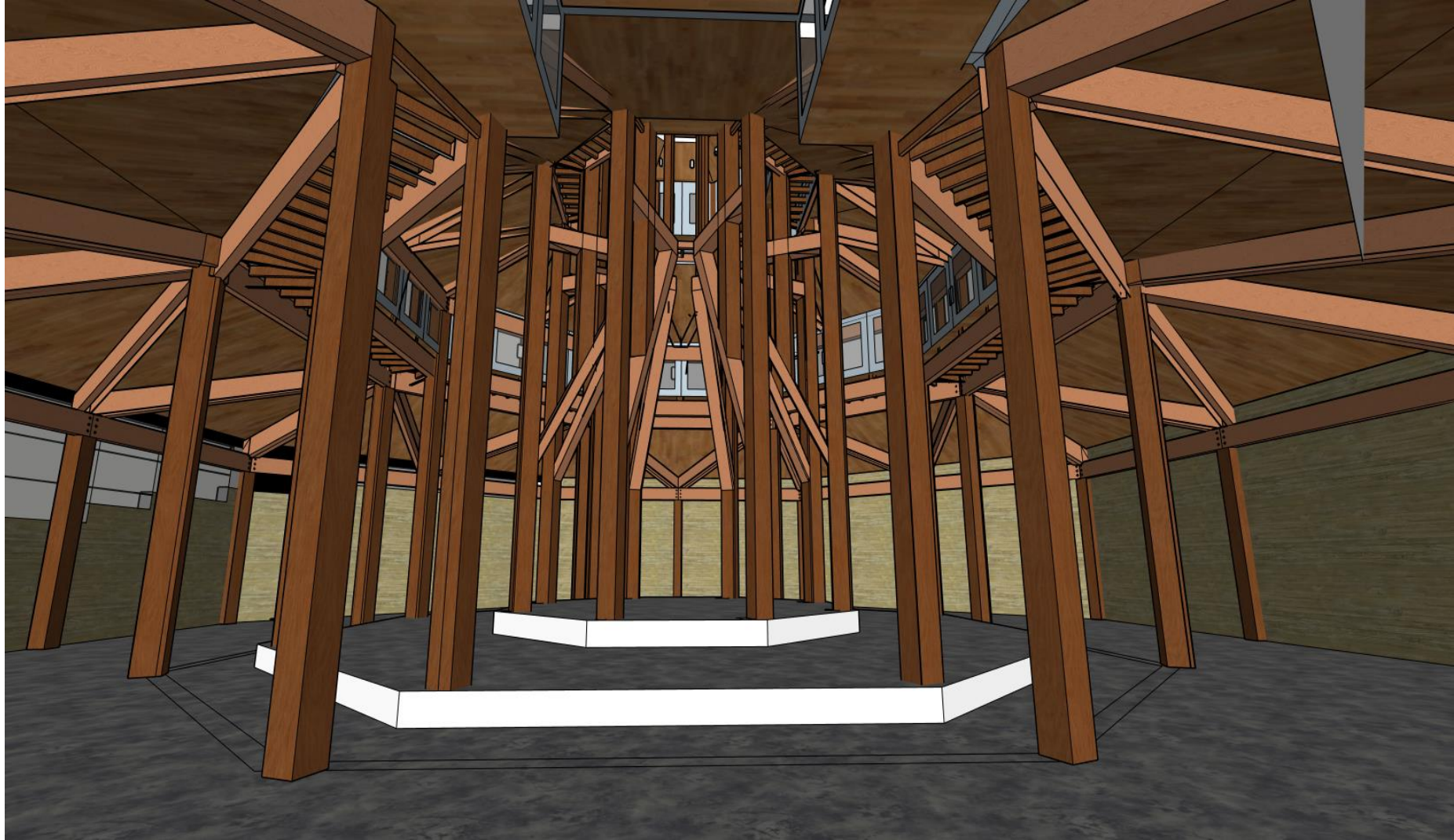
SECTION RENDERING

CHAPEL TECHTONICS



ROOF SUPPORT STRUCTURE

CHAPEL TECHTONICS



RENDERING OF CHAPEL INTERIOR