

# RICA

## Project Name + Location

Raleigh Institute of Contemporary Art (RICA)  
Raleigh, North Carolina

## Project Category

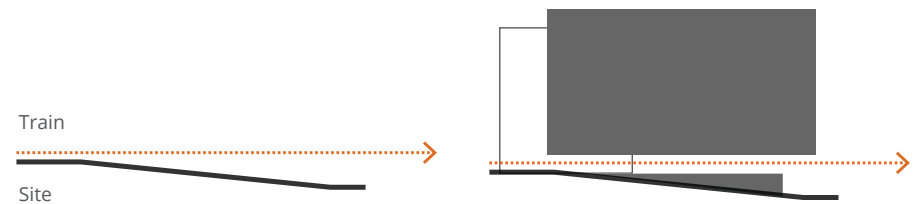
Undergraduate Submission, Studio Project

## Project Synopsis

CAM Raleigh currently offers art programs to primary and secondary level students and the community. In order to expand these offerings and establish a higher education curriculum, CAM is embarking on the design and construction of a new art institute in Downtown Raleigh, the Raleigh Institute of Contemporary Art. RICA will serve as a regional hub for art research, education, and community outreach and will offer BA and MFA degrees in several disciplines.

The RICA facility will house all research and education components for CAM. These include archive facilities and art laboratories, a library for books, folios, periodicals, and an extensive digital image database, classrooms for lecture courses, studios for painting, drawing, printmaking, urban art, and new media, critique spaces, a large lecture hall, and galleries for the display of work. The building will also house faculty and staff offices and all necessary support infrastructure for the operation of the facility.

## Parti Diagram

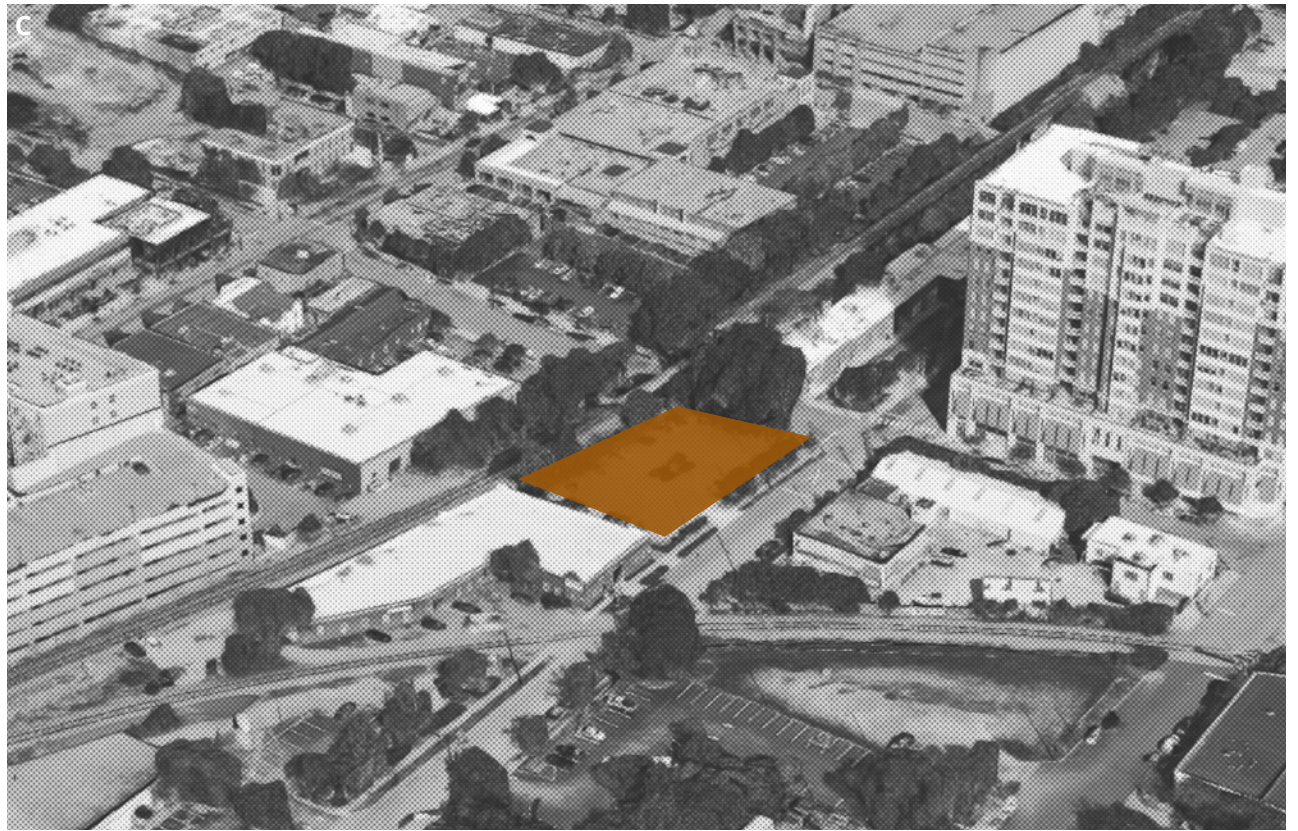
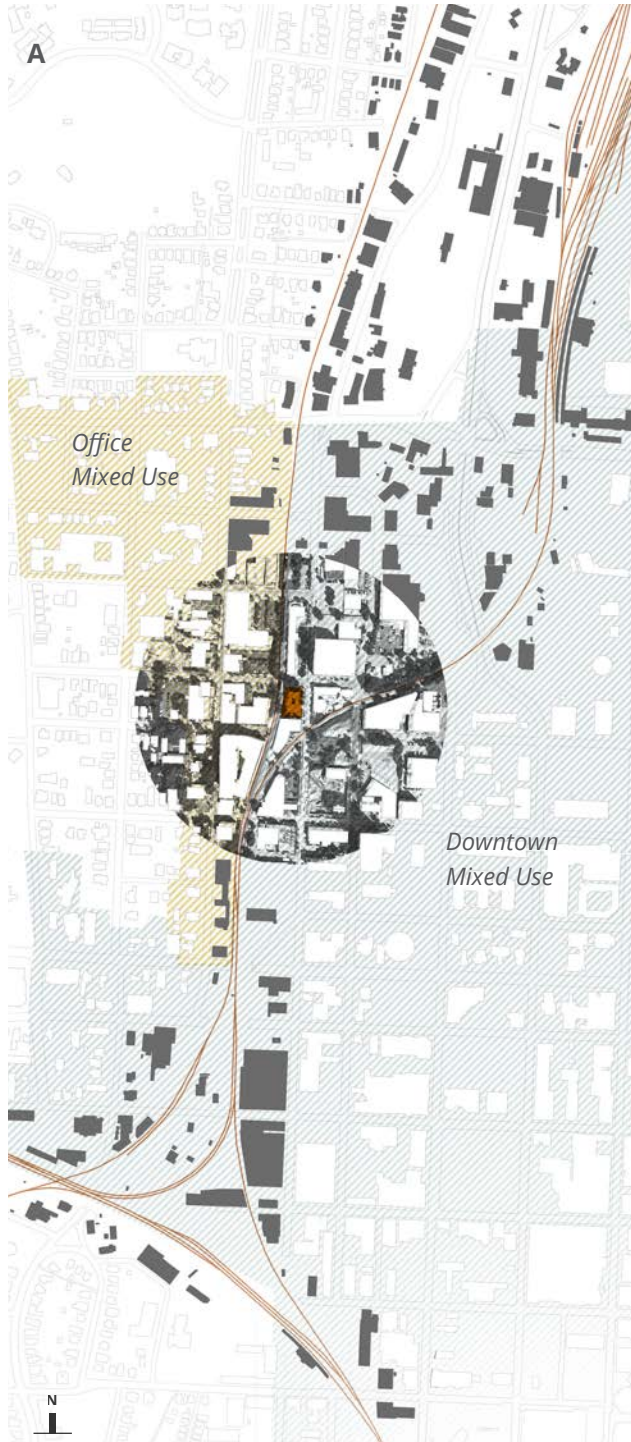


## Concept: Connecting Art + Process to the Urban Context

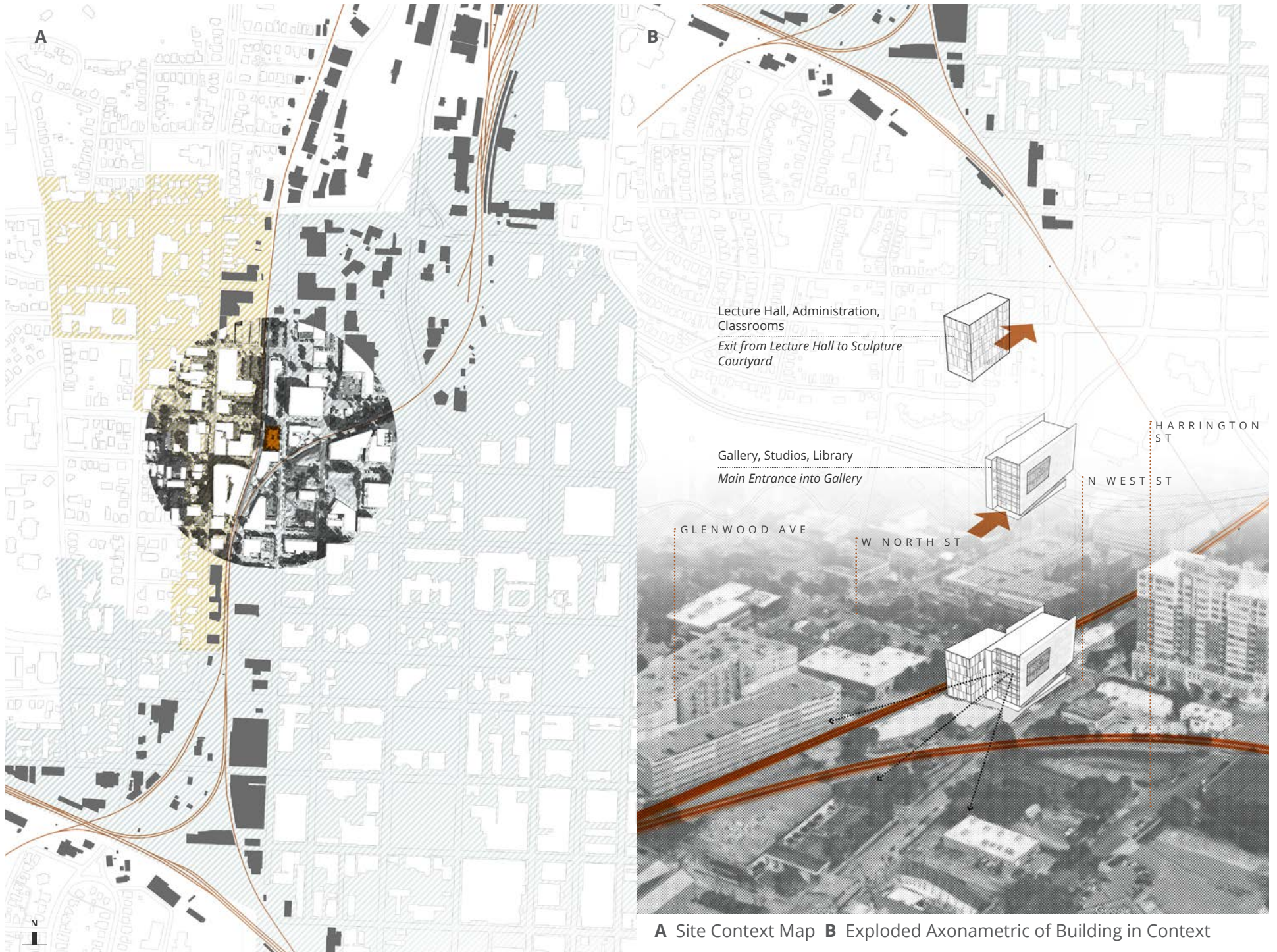
The scheme for this project is primarily driven by the unique features of the site and attempts to establish a connection between the activity of the interior and the urban context. A railway runs along the western edge of the site and begins to bridge over North Street as the topography drops approximately 14 feet from south to north. This is reflected in the façade, which consists of corrugated perforated metal panels that have been raised from the gallery floor such that a pedestrian on the street would be able to see through the building to the train beyond. A large void in the screen creates a display plane that allows pedestrians to view art on movable panels and provides a glimpse into the process of creating art. The Institute is comprised of two volumes; the large skeletal volume contains the library, studio spaces, and gallery. The smaller more opaque volume contains the lecture hall, admin spaces, and the classrooms. The two volumes have been arranged to appear as if they slid past one another, creating a fore court at the main entrance and a larger sculpture garden.

**Contemporary Art Museum of Raleigh**  
*409 W Martin St, Raleigh, North Carolina*



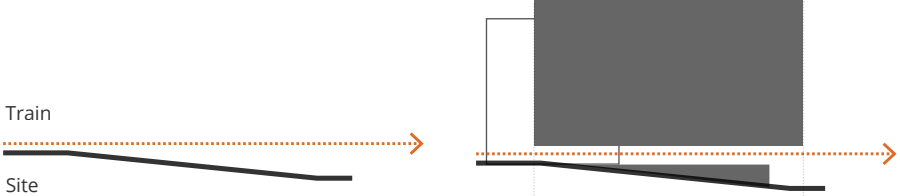


**A** Site Context Map **B** View from North-East Corner **C** 3-D Context Map Looking North-West

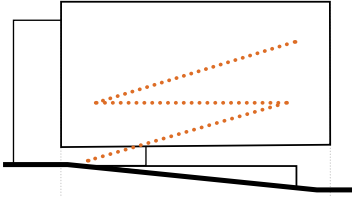


**A** Site Context Map **B** Exploded Axonometric of Building in Context

**A** *Parti Diagram*



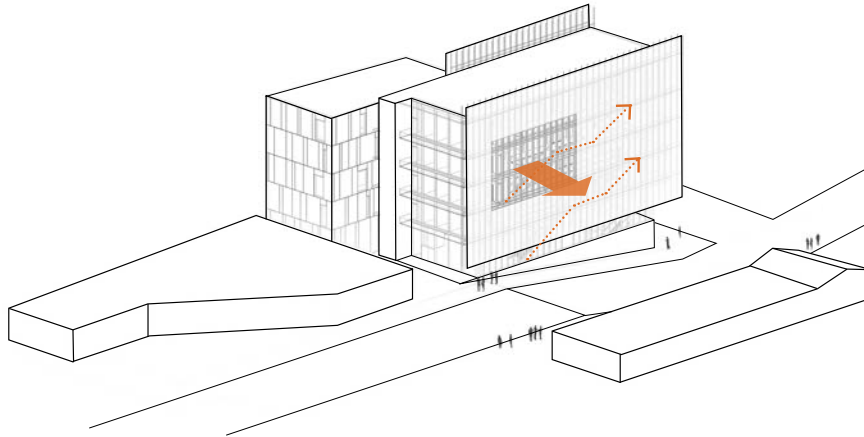
**B** *Program Diagram*



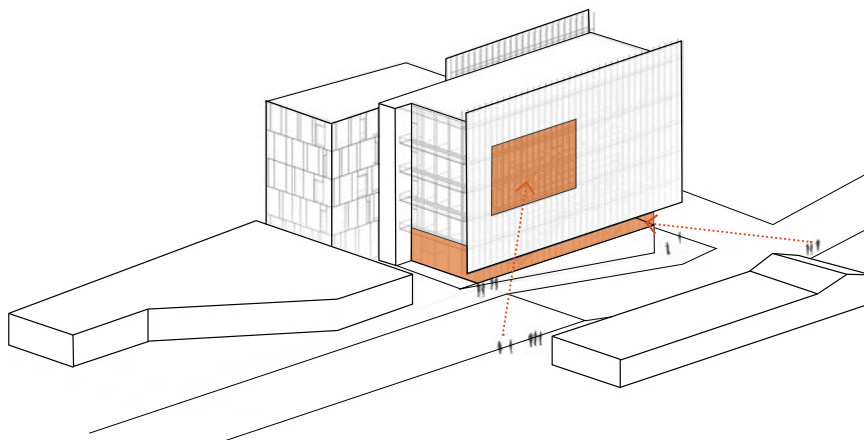
**C** *Site Section*



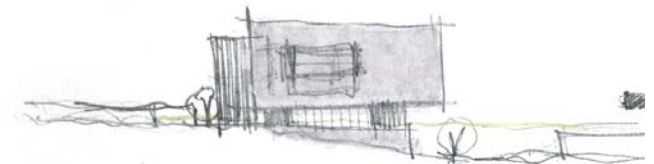
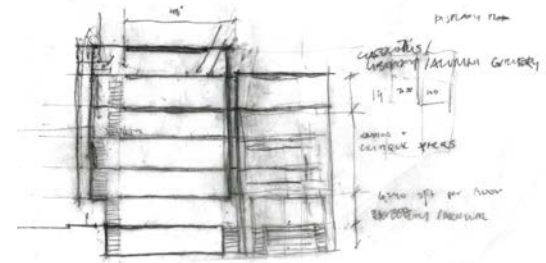
**A** *Reciprocity of Sight*  
*Monumental Stair + Display Plane*



**B** *Reciprocity of Sight*  
*Display Plane + Gallery*

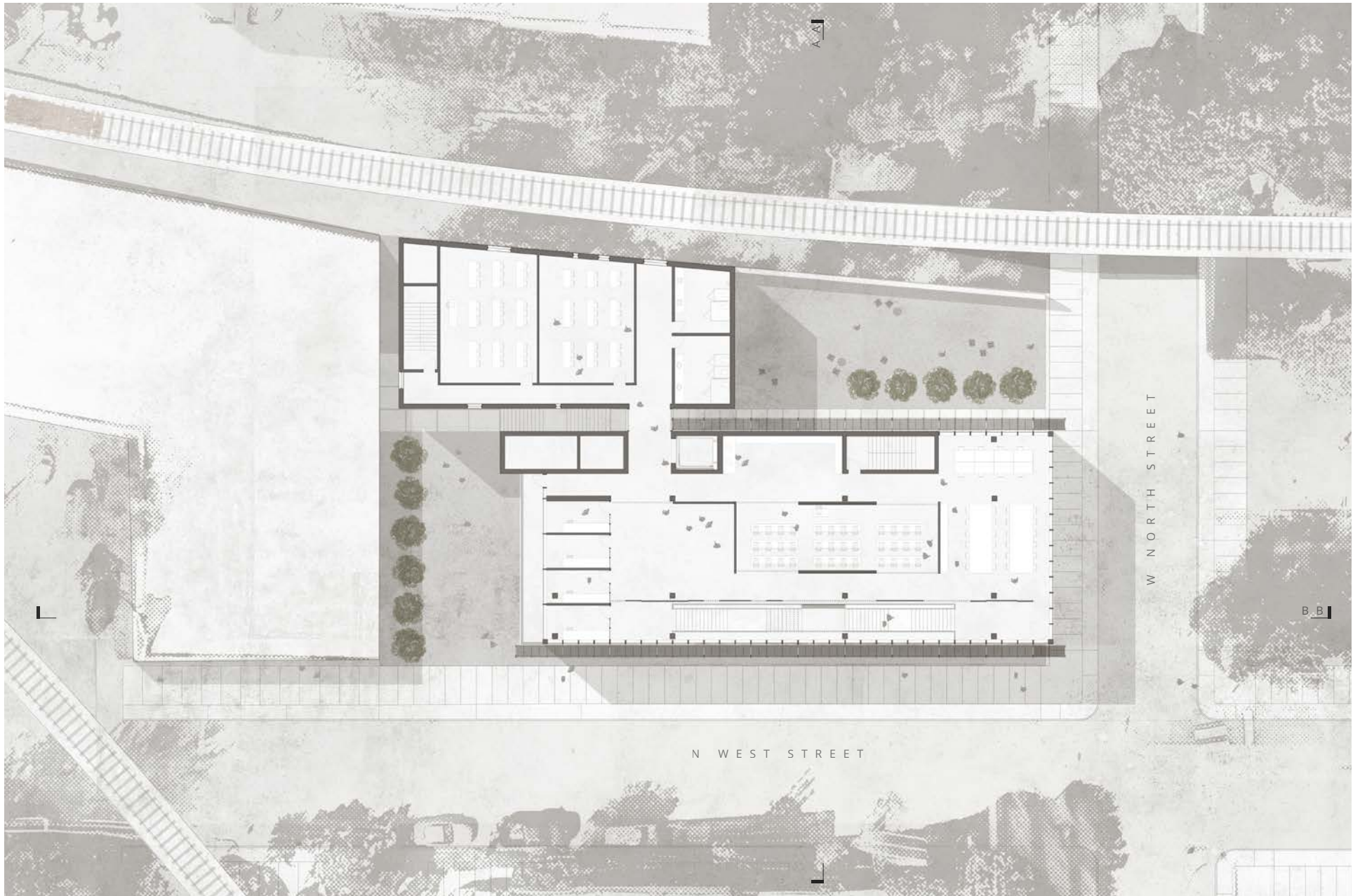


**C** *Sketches*





**A** *View from North-East Corner*



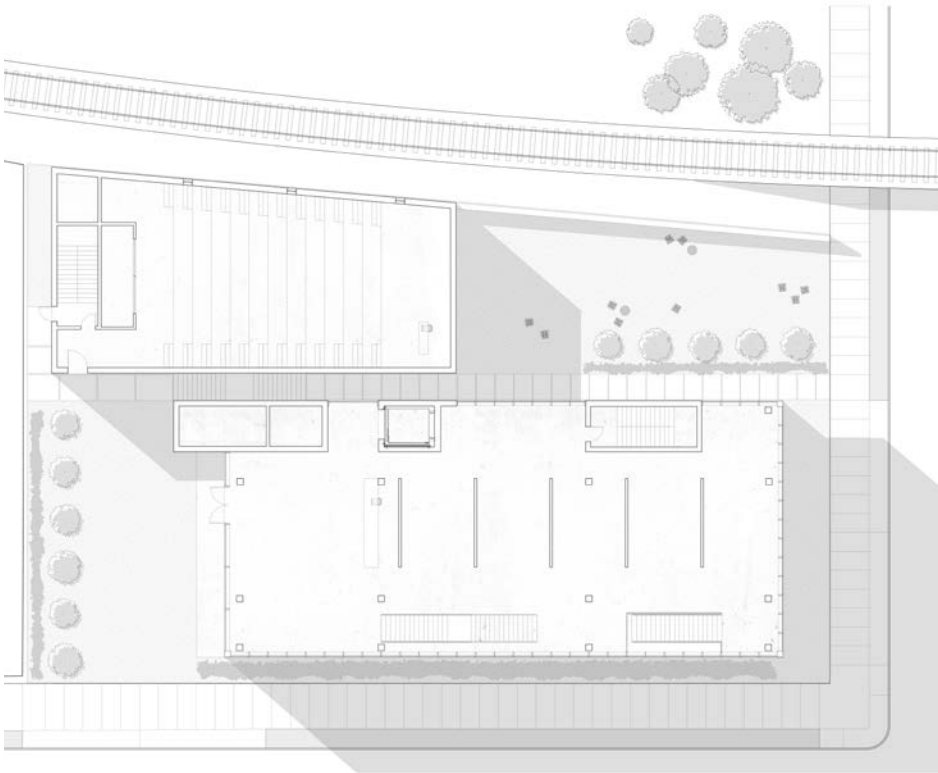
**A** Site Plan with Typical Studio Plan



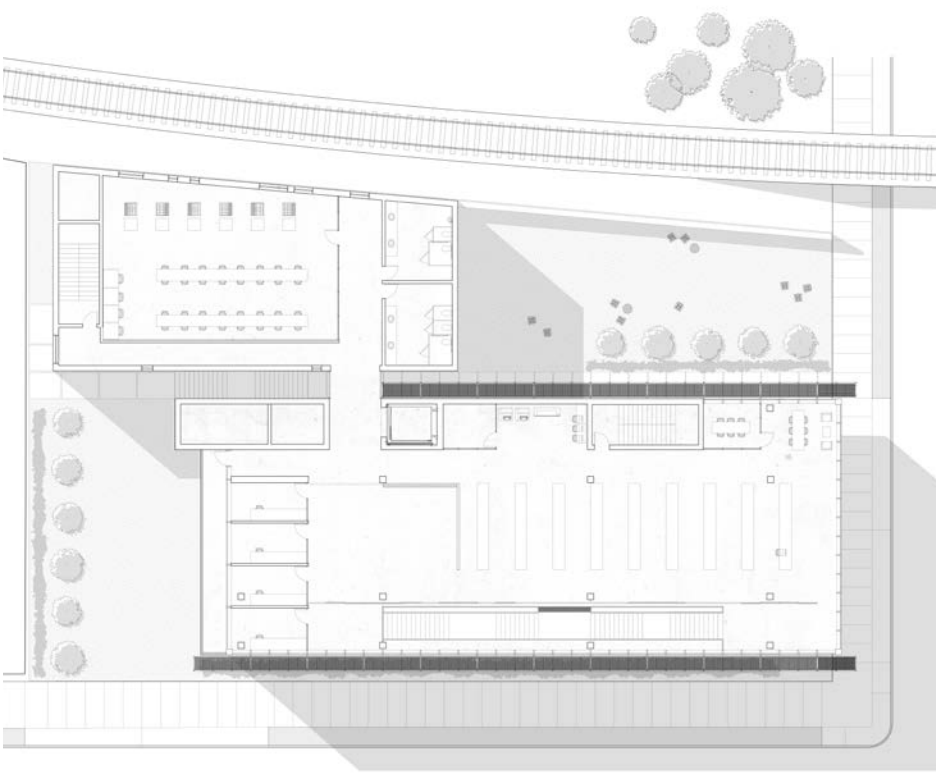
**A** Site Section



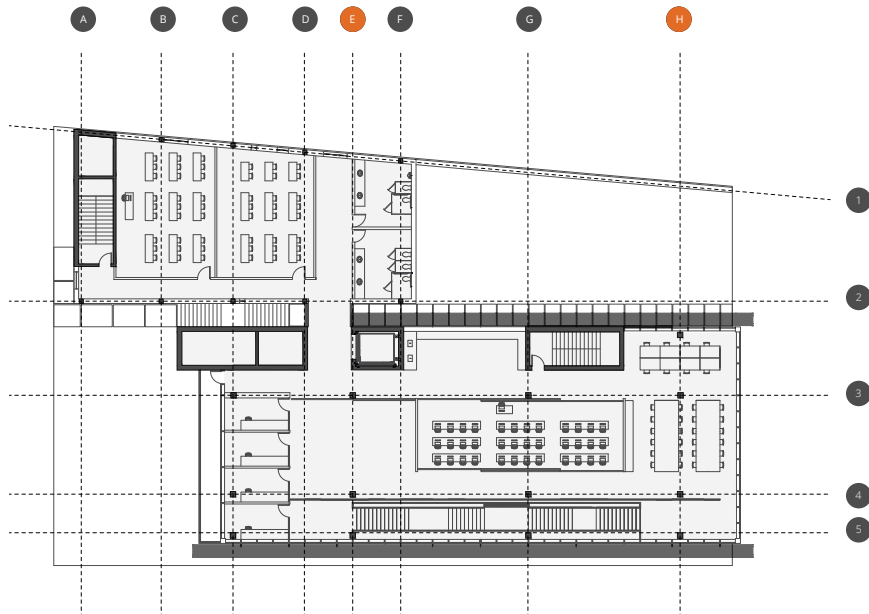
**B** Ground Floor with Gallery



**C** Fifth Floor with Library



**A** Structure Diagram (Orange = Moment Connection)



**B** Interior Perspective of Gallery with Train

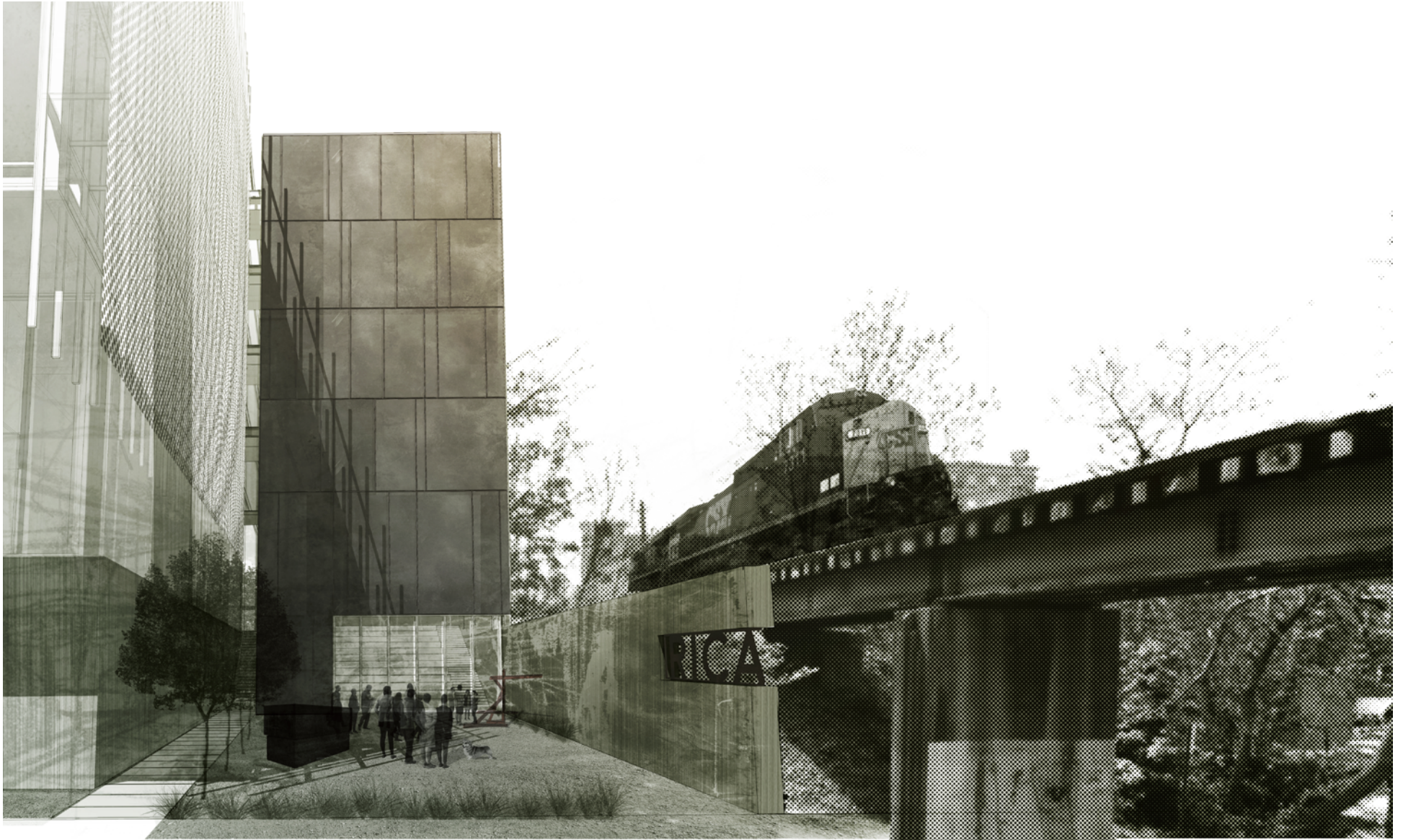


**C** 1/8" Study Model





**A** Section AA



**A** *View into Sculpture Courtyard*

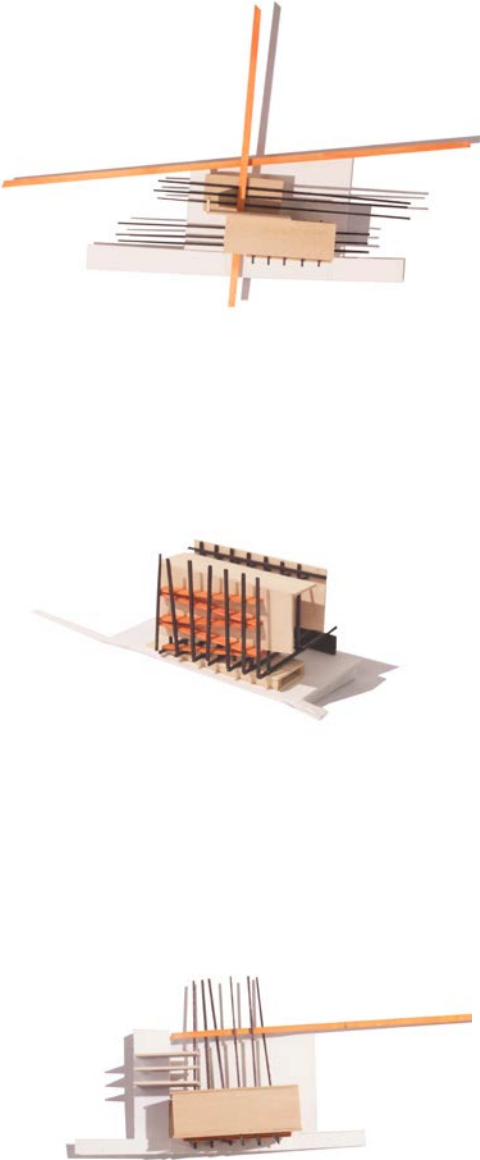


A Section BB



**A** *Perspective of Monumental Stair*

**A** *Parti Study Models*



**B** *1/16" Final Model*

