

Project Name: **SCIENCE AND TECHNOLOGY CENTER**  
Project Location: **COPPIN STATE UNIVERSITY, BALTIMORE MD**  
Project Category: **INSTITUTIONAL, HIGHER EDUCATION**

Project Synopsis:

**SITE**

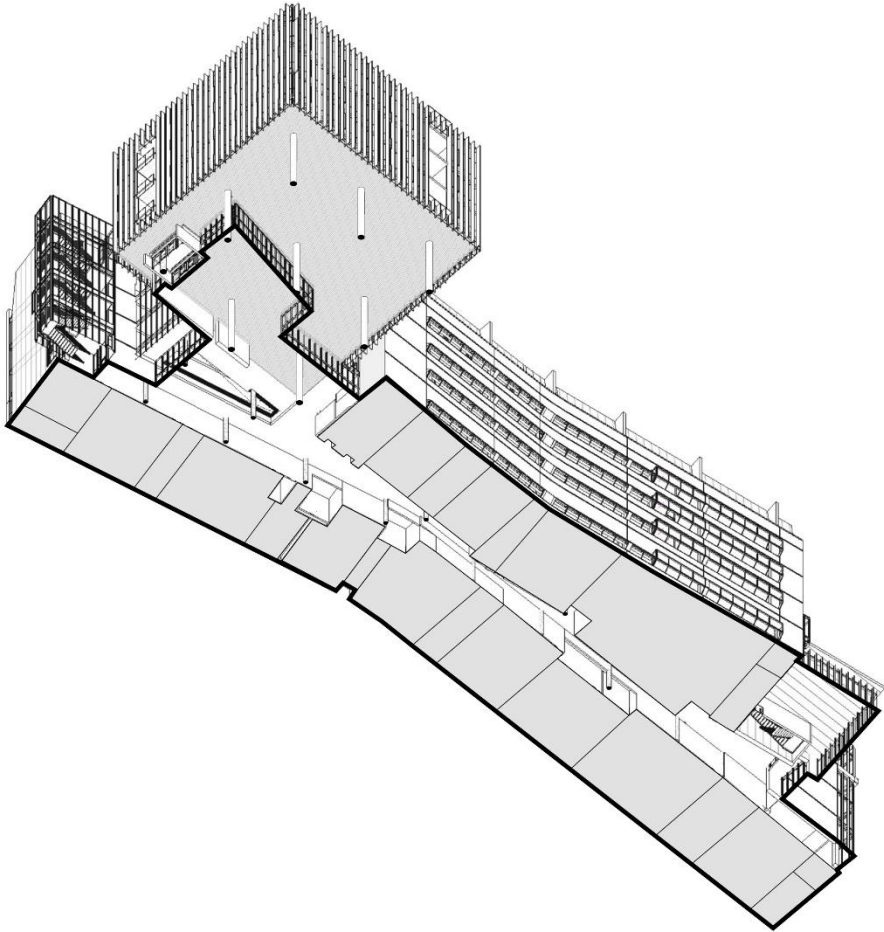
The siting for this new building creates a new campus quadrangle for the University by framing green space between it and the recently opened Health and Human Services Building. The building aligns and organizes itself along a major north/south pedestrian walkway that internally connects the entire campus. A new quadrangle includes a set of broad campus steps that provides transition from North Avenue. It establishes a strong presence at the corner of Warwick Avenue and North Avenue and presents itself as a campus gateway to those approaching from central Baltimore along North Avenue. Landscape and architecture are intertwined to create a new set of campus and public spaces which open up the previously walled campus to the surrounding city.

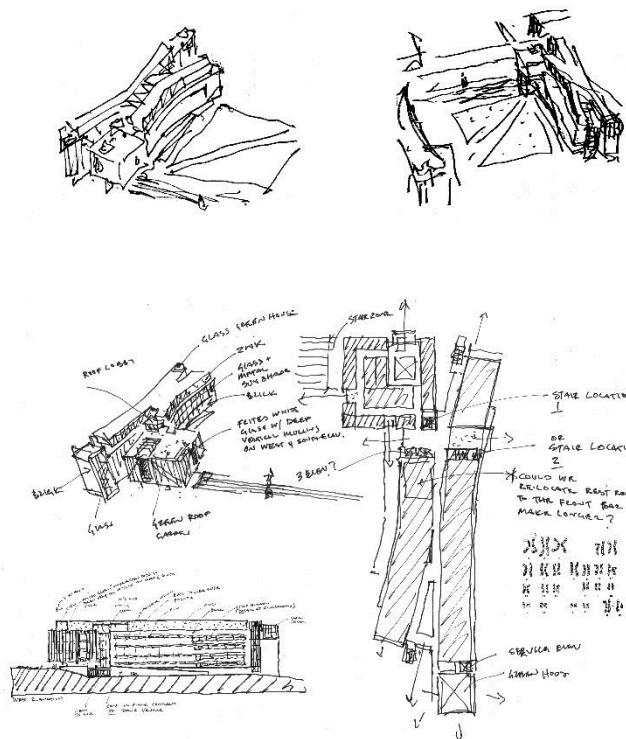
**PROGRAM**

The building plan is organized to produce a collaborative learning environment for the STEM Sciences. Faculty and students from different departments have spaces to collaborate and work together on projects that cross traditional departmental boundaries. The new facility houses the Math/Computer Science Department, Natural Sciences Department, (Biology, Chemistry and Physical Science), IT Department and the main campus data center. General classrooms and computer labs for campus-wide use are also included on the lower level of the building. A café, exhibit space and a lecture hall for one hundred students creates an active and vibrant atmosphere within the entry level. A small animal vivarium in the basement supports the Natural Sciences Department.

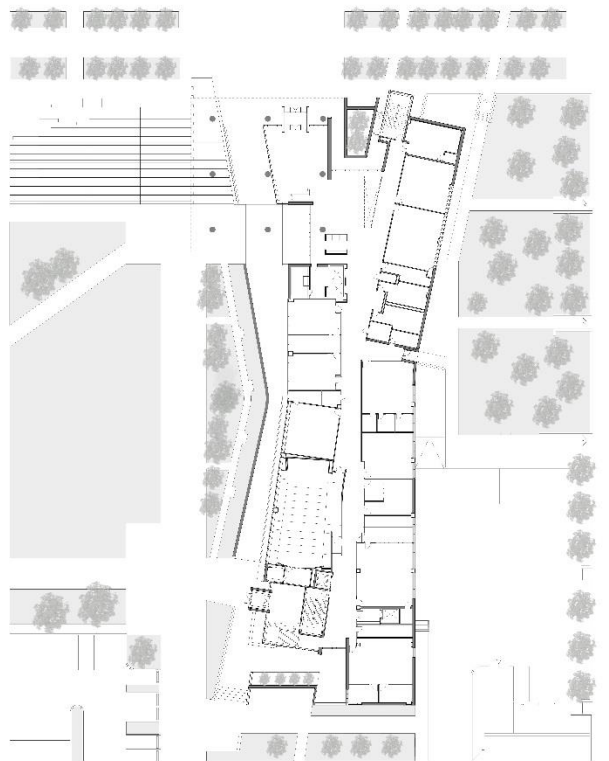
**SOLUTION**

Coppin State University's Science and Technology Center is a singular building that must address and fulfill many aspirations of this urban campus. It is a building that operates at both a macro and micro scale. It is a part of a campus, part of a city and part of a neighborhood. It fits into the fabric of the campus and into the patterns of daily student life. It is a building specifically designed to meet today's and tomorrow's exacting tolerances and specifications for labs and teaching spaces but also to promote the cross pollination of ideas across disciplines and between faculty and students. It's wholly contemporary design and focus on sustainability reflects the mindset of the college - to equip graduates with 21<sup>st</sup> -century skills that prepare them to integrate knowledge about complex systems and adapt to a constantly changing set of challenges.

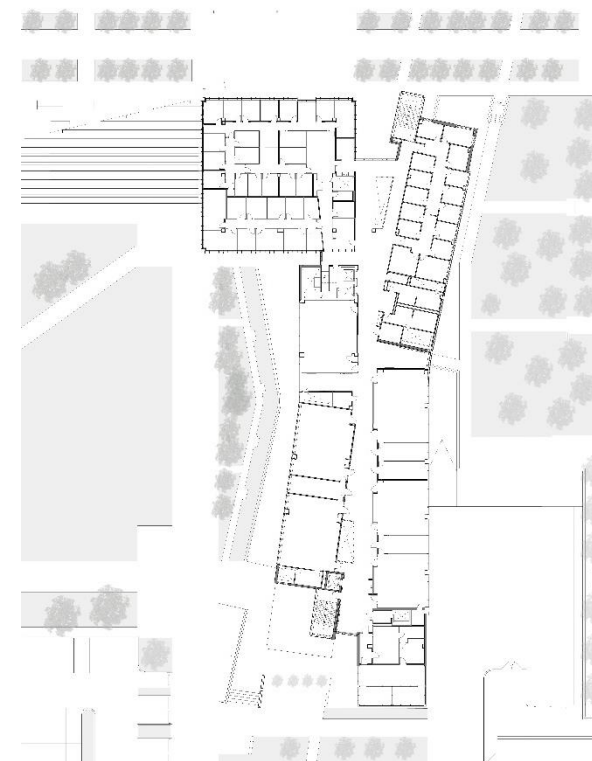




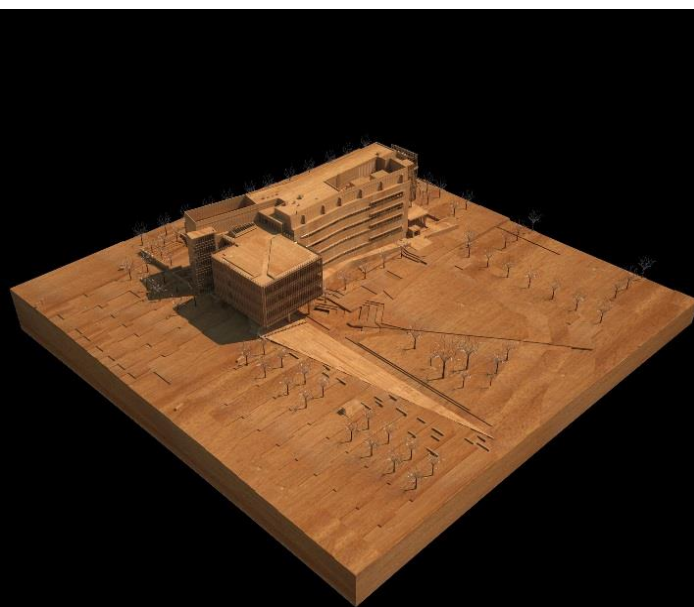
Preliminary Sketches



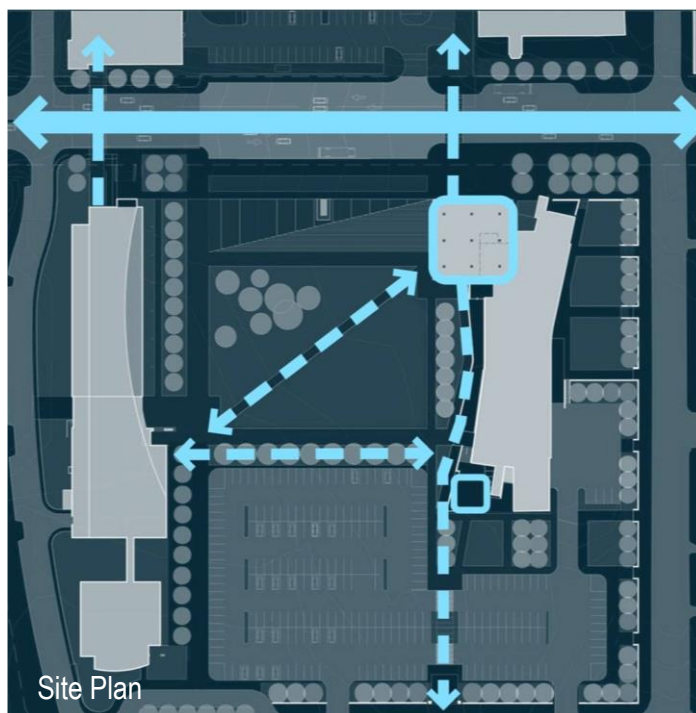
Ground Floor Plan



Fourth Floor Plan



Study Model



Site Plan



Context Plan











**Building Isometric of East Elevation by North End**

