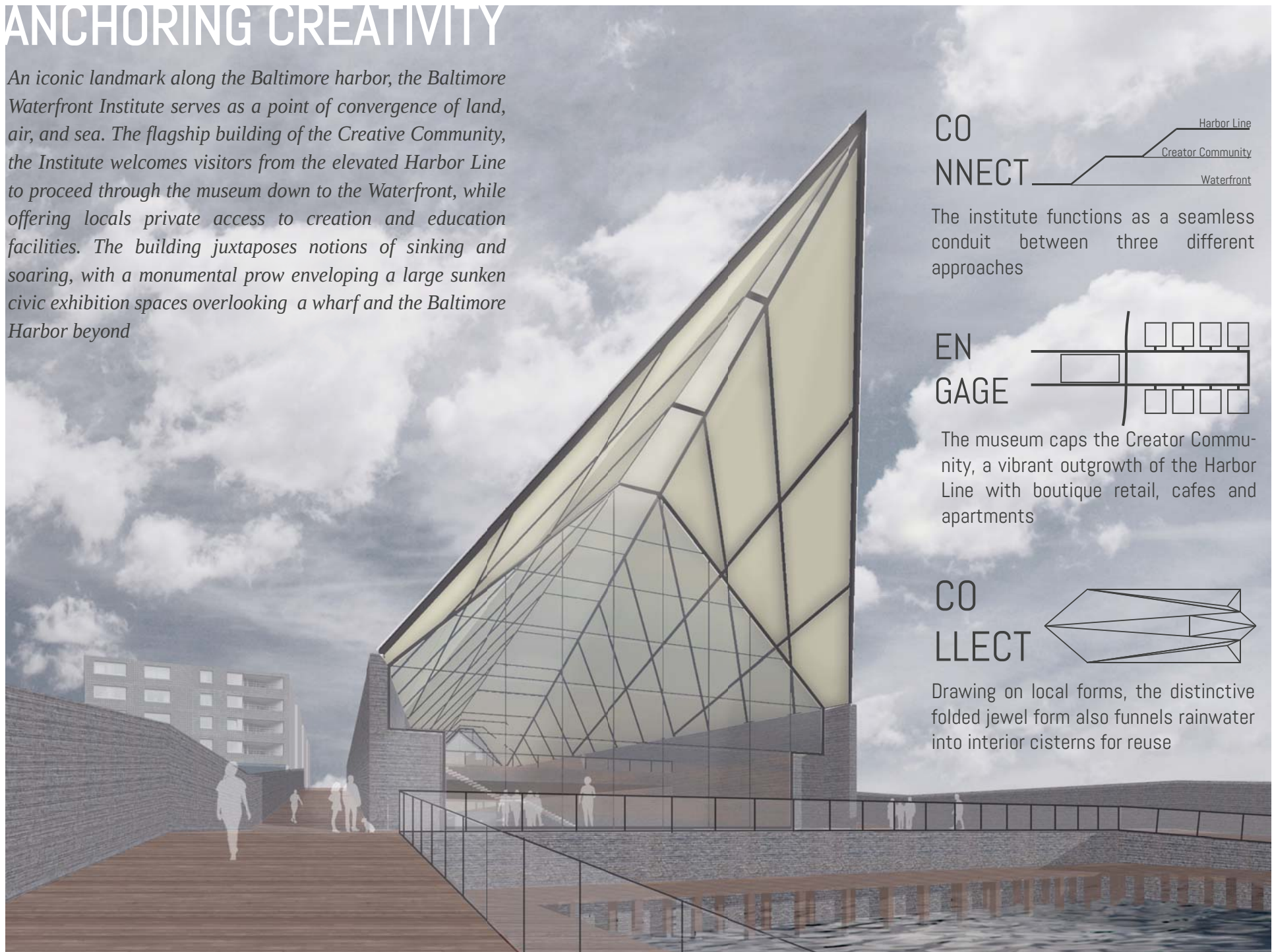
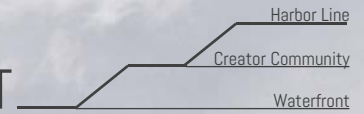


# ANCHORING CREATIVITY

*An iconic landmark along the Baltimore harbor, the Baltimore Waterfront Institute serves as a point of convergence of land, air, and sea. The flagship building of the Creative Community, the Institute welcomes visitors from the elevated Harbor Line to proceed through the museum down to the Waterfront, while offering locals private access to creation and education facilities. The building juxtaposes notions of sinking and soaring, with a monumental prow enveloping a large sunken civic exhibition spaces overlooking a wharf and the Baltimore Harbor beyond*

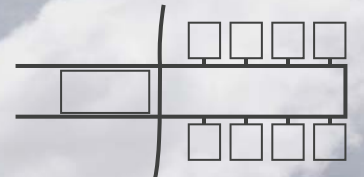


CO  
NNECT



The institute functions as a seamless conduit between three different approaches

EN  
GAGE



The museum caps the Creator Community, a vibrant outgrowth of the Harbor Line with boutique retail, cafes and apartments

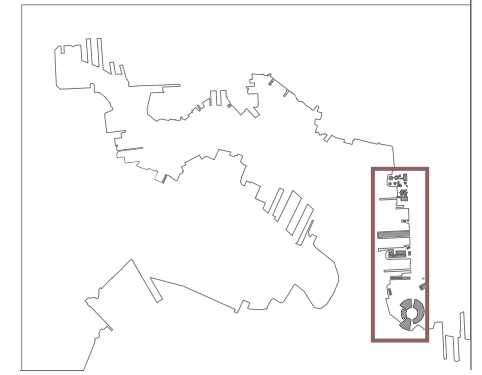
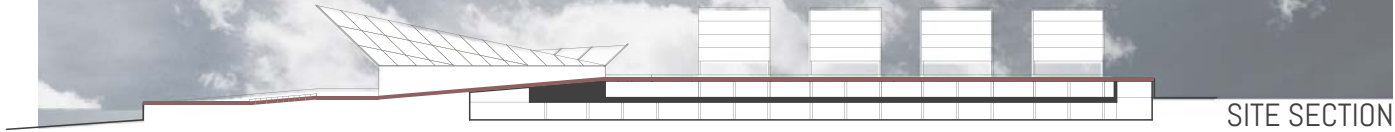
CO  
LLECT



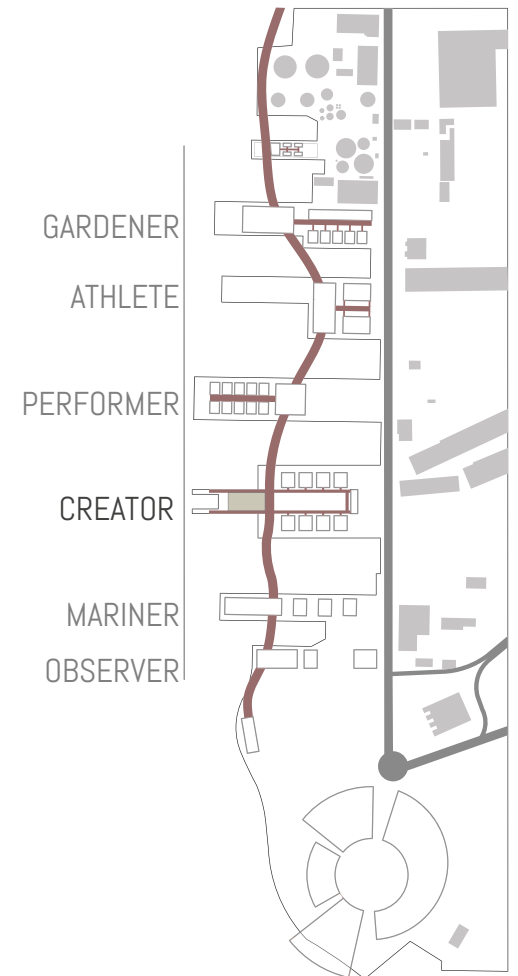
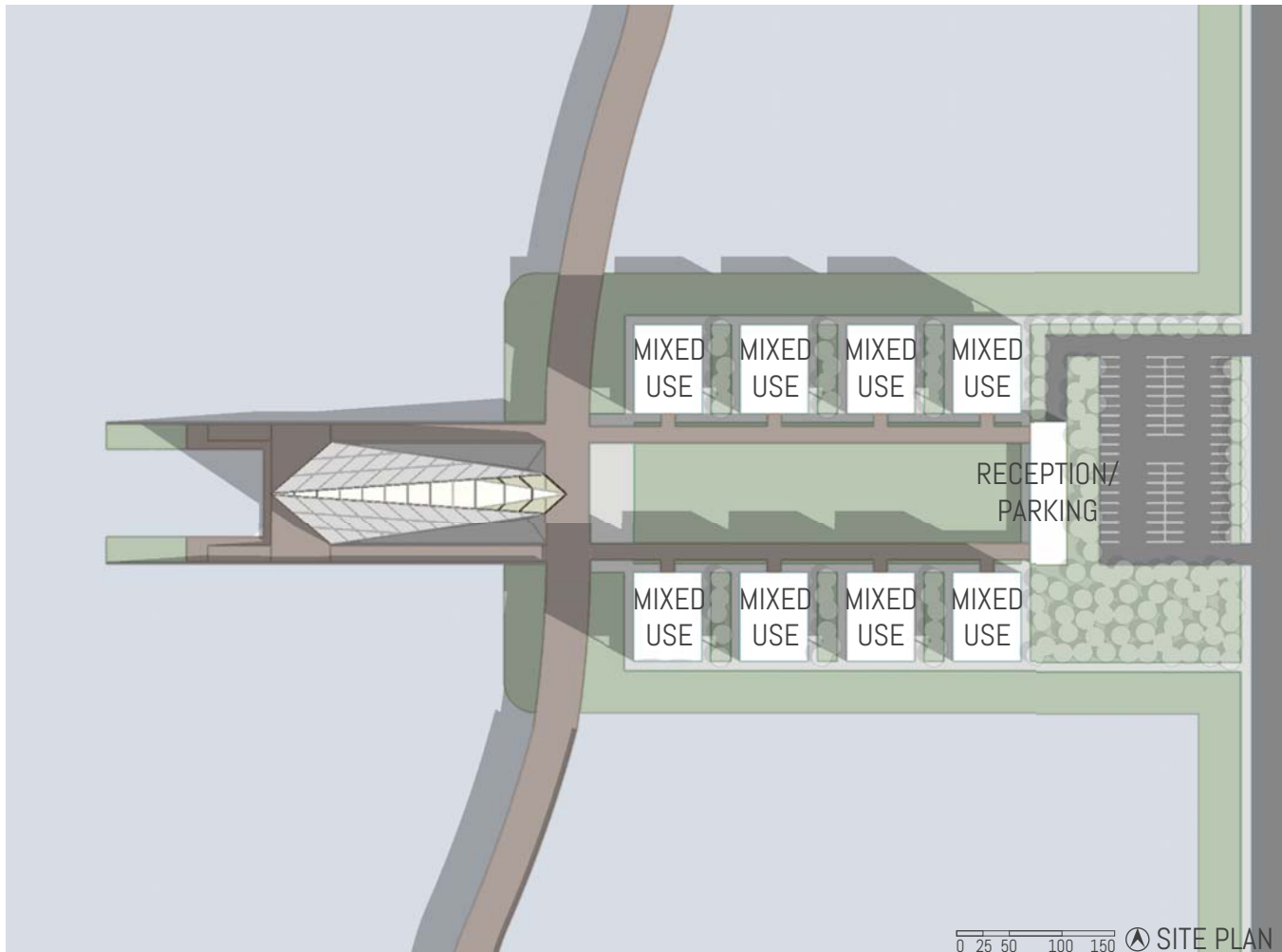
Drawing on local forms, the distinctive folded jewel form also funnels rainwater into interior cisterns for reuse

# THE HARBOR LINE

A reimagination of the Baltimore Waterfront led to a proposal to convert the mostly defunct warehouses along the Canton piers into distinct mixed-use communities connected by an elevated skywalk. This Harbor Line provides a vibrant pedestrian route above and away from the industrial east while allowing a green ground plane to serve as a natural stormwater filtration system.

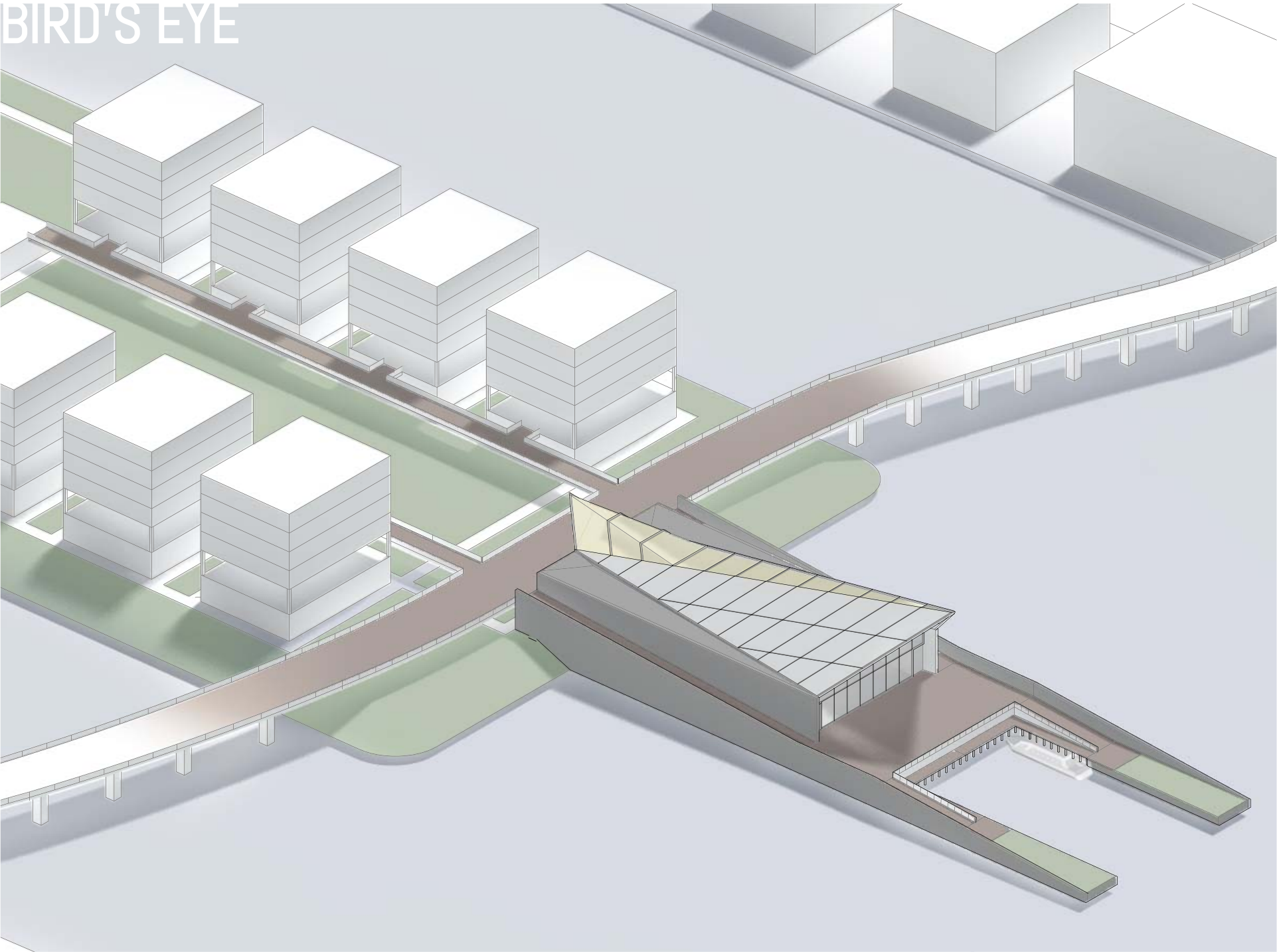


BALTIMORE MAP



CANTON PIERS MAP

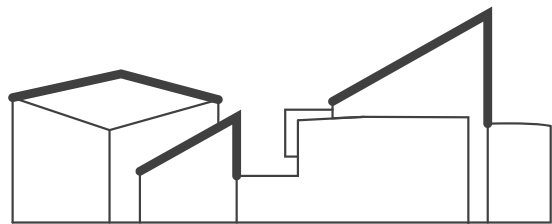
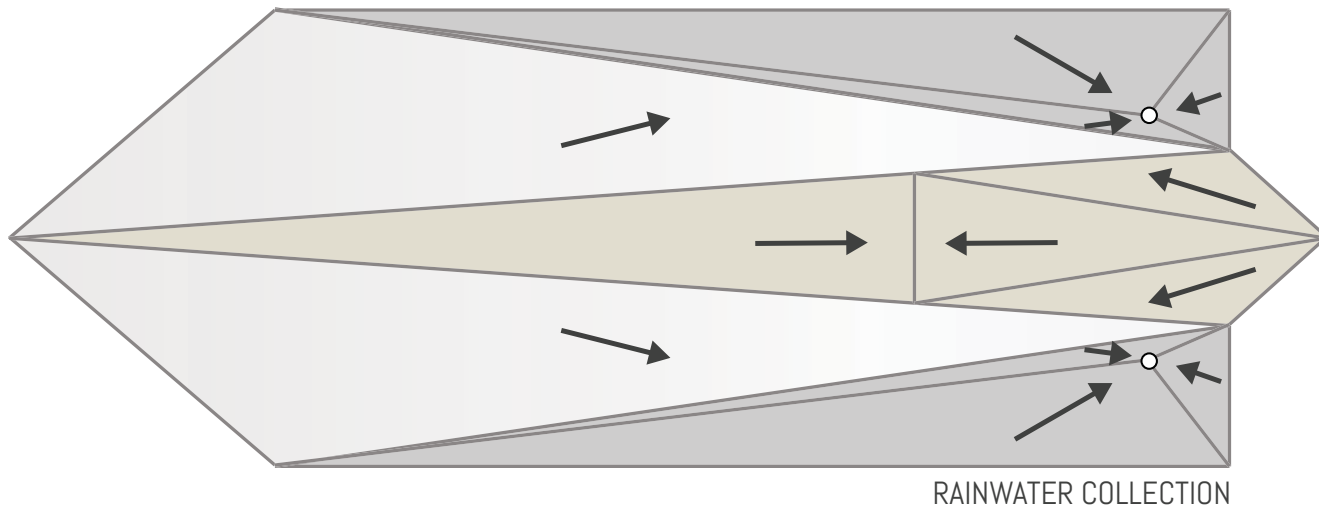
# BIRD'S EYE



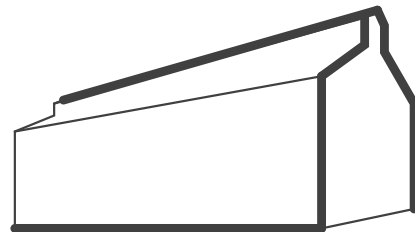


# FORM

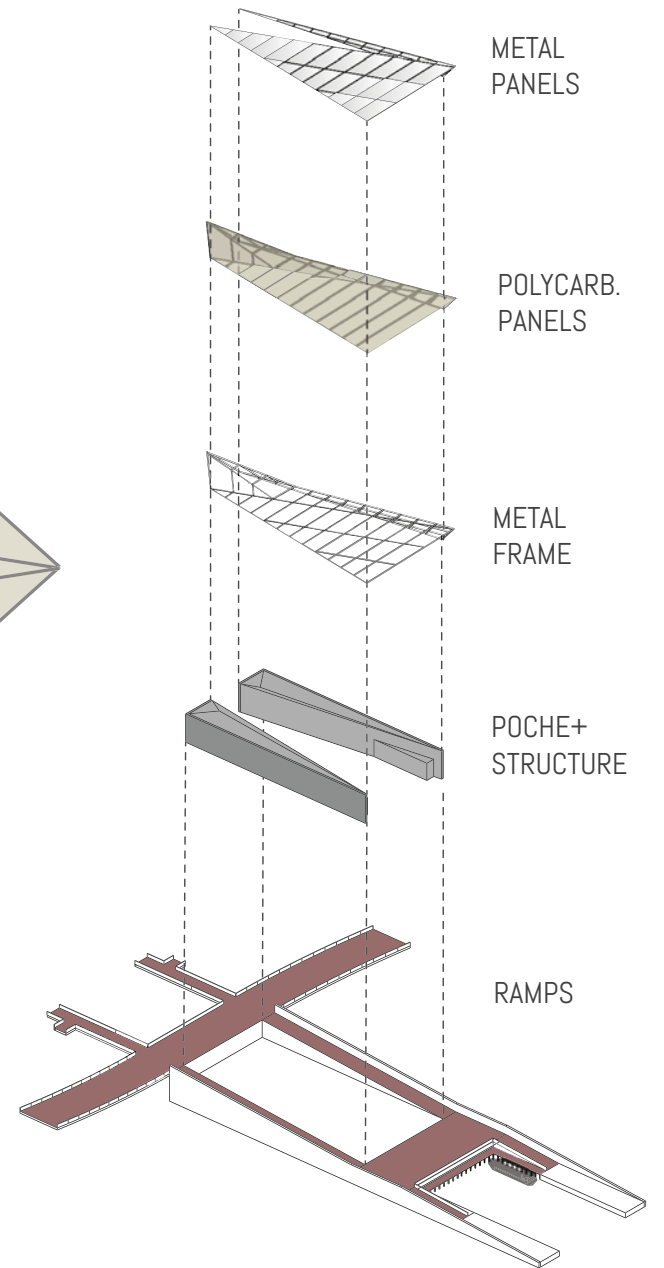
*This folded jewel form plays on competing notions of sinking and soaring, an appropriate motif for a building that operates at the intersection of the aerial Harbor Line, the grounded Creator Community, and the Baltimore Waterfront. As with the masterplan, stormwater control is a primary concern, and the faceting also serves to channel the water toward internal water cisterns for reuse throughout the building. The distinctive form takes precedence from significant local buildings, though is reimagined in a way to provide a new icon along the Inner Harbor*



**NATIONAL AQUARIUM**  
An iconic landmark along the Baltimore Waterfront, the aquarium is immediately identifiable by its prominent prows

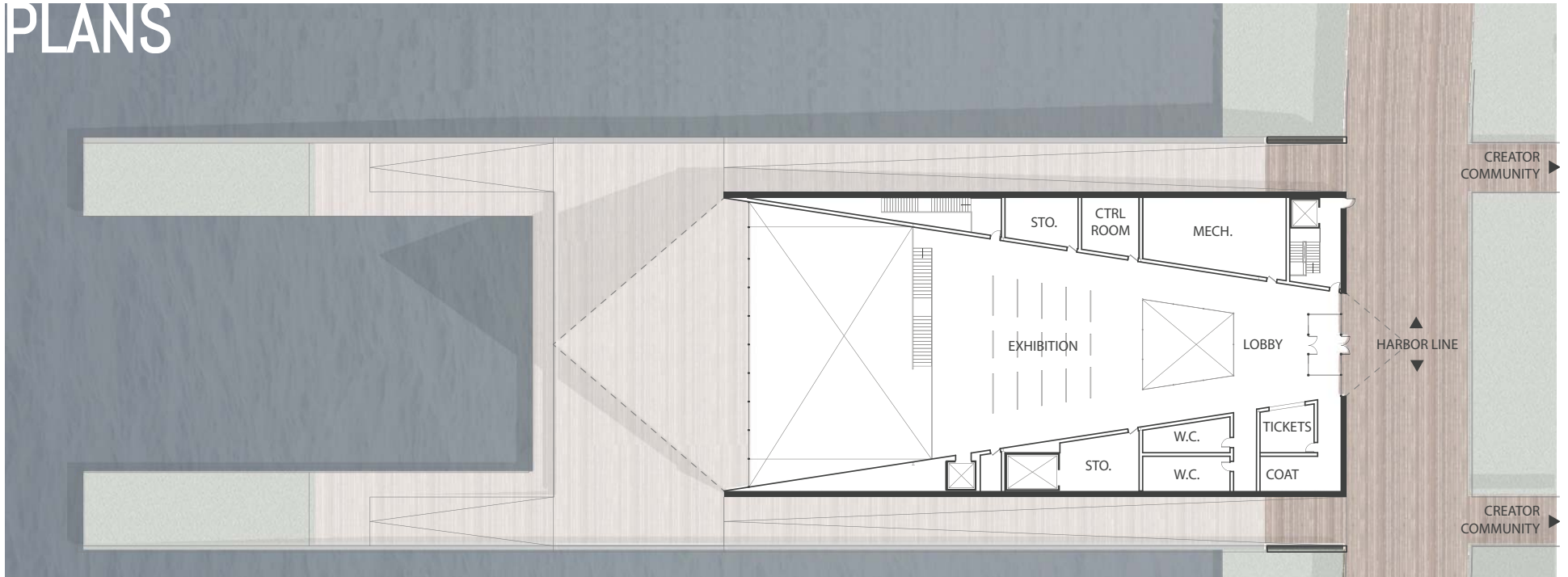


**GENERAL SHIPPING CO.**  
Similar to the warehouses that exist on the Canton Piers, this historic site displays a changing angled roof and a long, horizontal reading

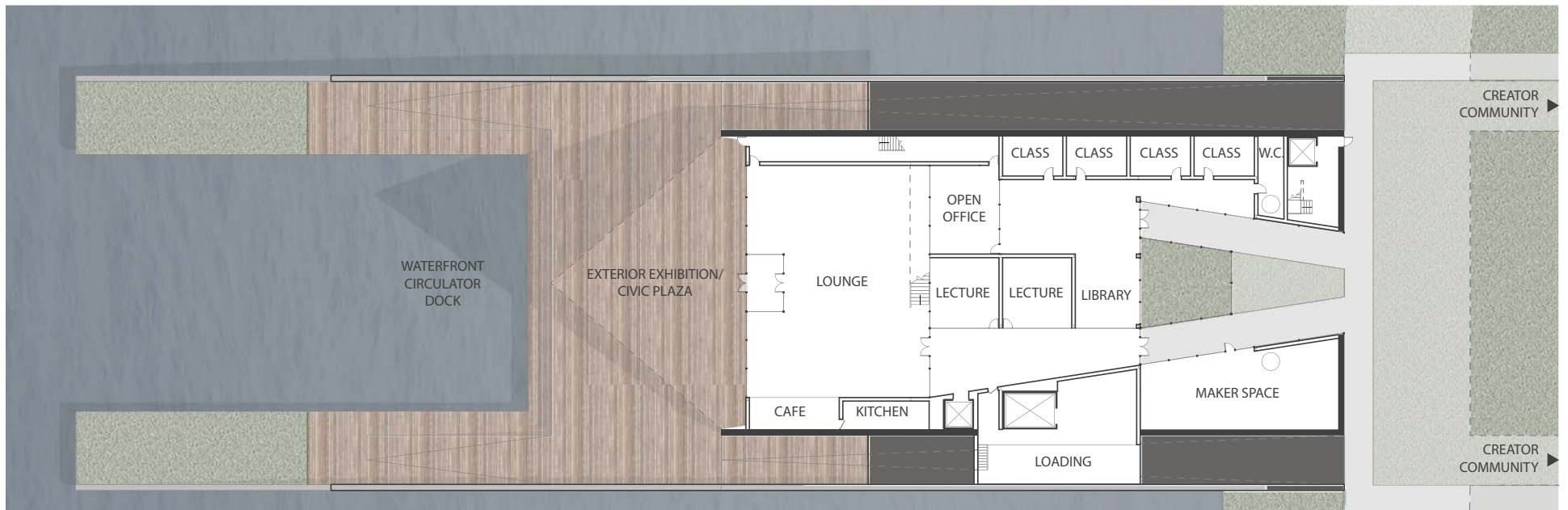


EXPLODED AXONOMETRIC

# PLANS

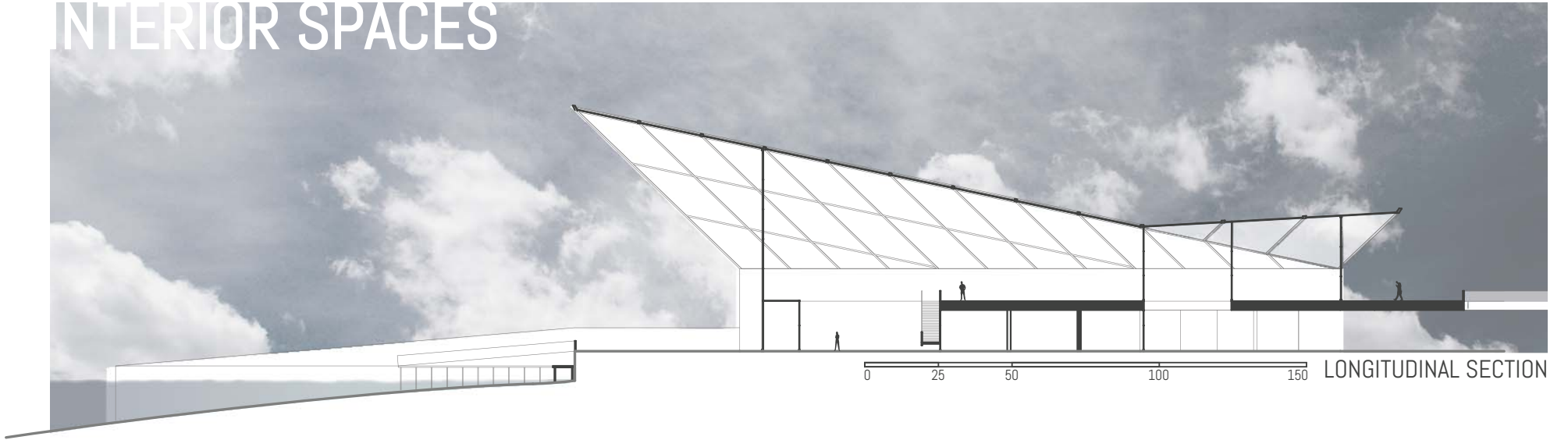


2. HARBOR LINE LEVEL PLAN

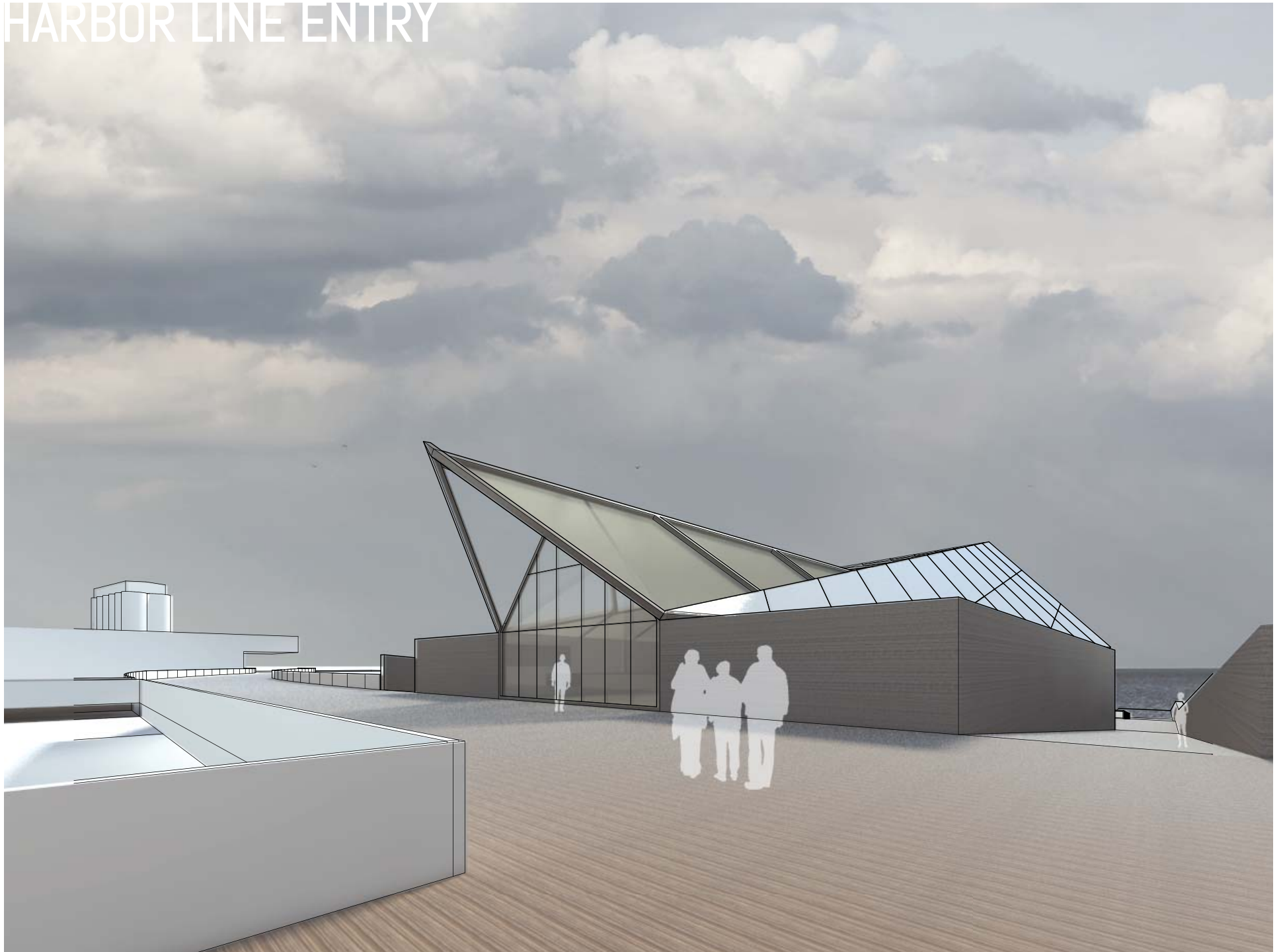


0 25 50 100 150 Ⓢ 1. CREATOR COMMUNITY LEVEL PLAN

# INTERIOR SPACES



# HARBOR LINE ENTRY





# ITERATIVE SKETCHES

*This project went through three different approaches, each with a weeks worth of individual refinement before settling on the ramping folded jewel approach. Other approaches included an industrial truss form with a covered outdoor second floor and a curvaceous wood reveal that blended seamlessly with the Harbor Line. The final approach combined the best elements from both to form an iconic building that connects with the Harbor Line and Waterfront.*

