

A NEW GATEWAY

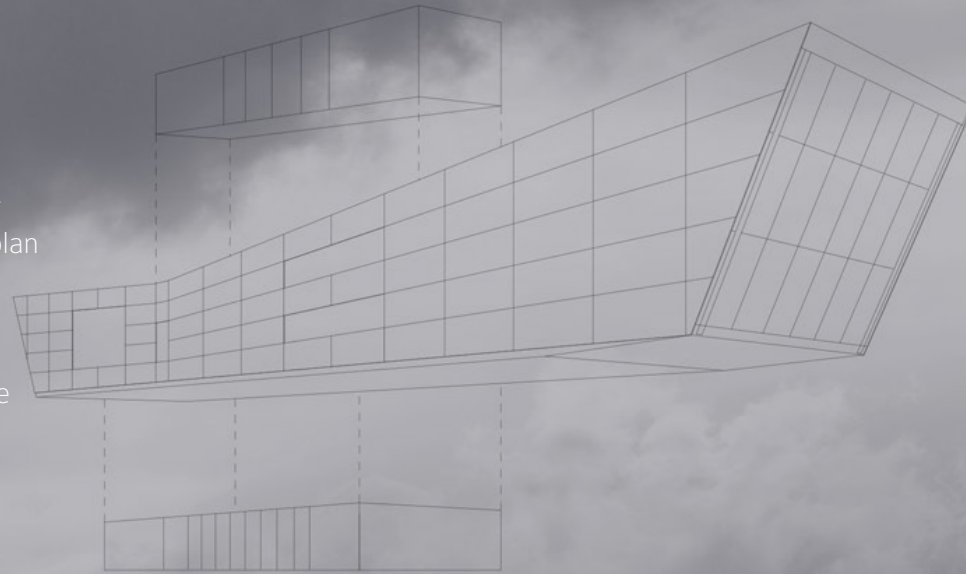
Location: Baltimore, Maryland

Project: Undergraduate Studio

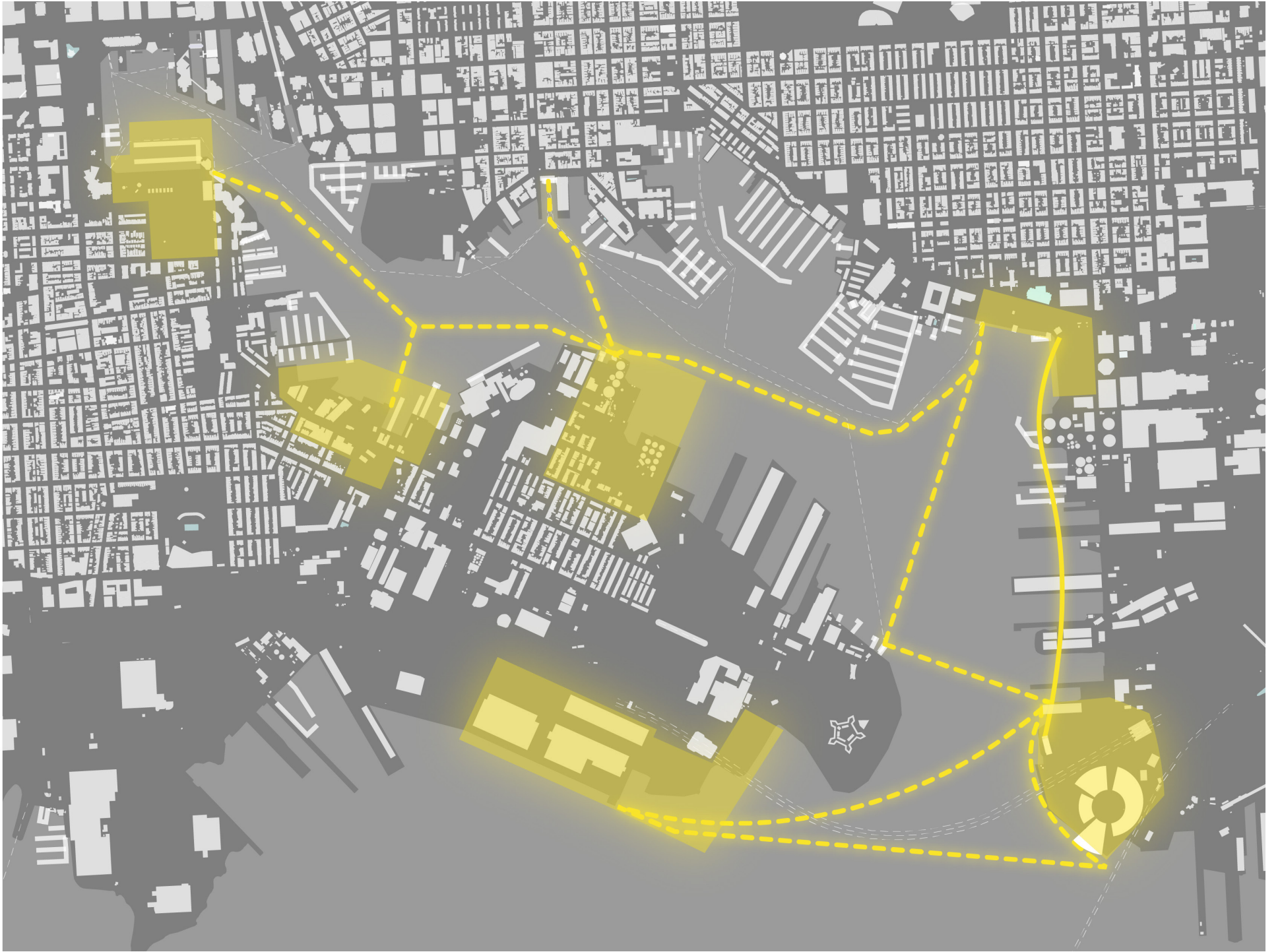
On the mouth of Baltimore's Inner Harbor, Lazaretto Point was an excellent place for a "Destination," potentially enclosing the inner harbor waterfront promenades. Phase One of the master plan introduces the destination, a circular plan of cultural centers, resembling Fort McHenry right across the harbor as the new gateway to the city. Phase Two introduces a new typology of communities along the piers with a raised pedestrian bridge in an effort to connect the promenades.

The Baltimore Maritime Institute projects over the pedestrian bridge and beyond water to mark an important threshold to Lazaretto Point and to the inner harbor. Its impressive extension out to the water also expresses its desire to communicate programmatic aspects of the institute.

The volume's massive truss structure cantilevers over the plaza to emphasize the industrial history of Baltimore, while the envelop of the institute suggests its movement to the future and beyond.



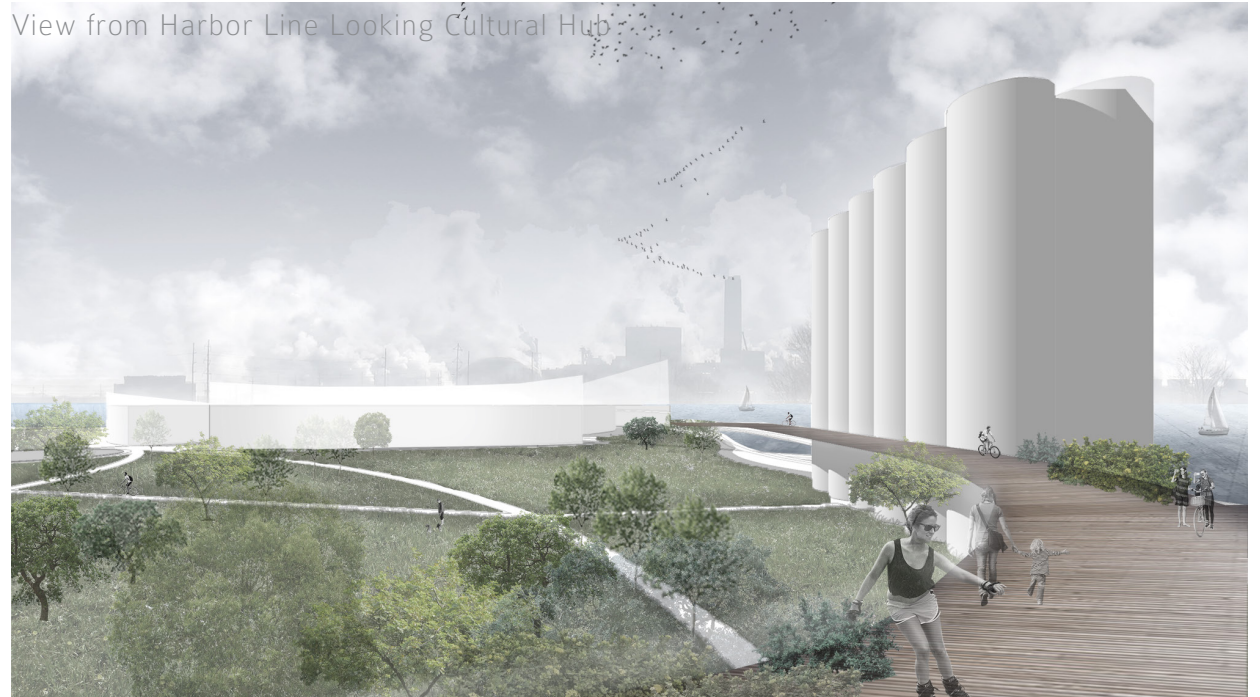




Master plan

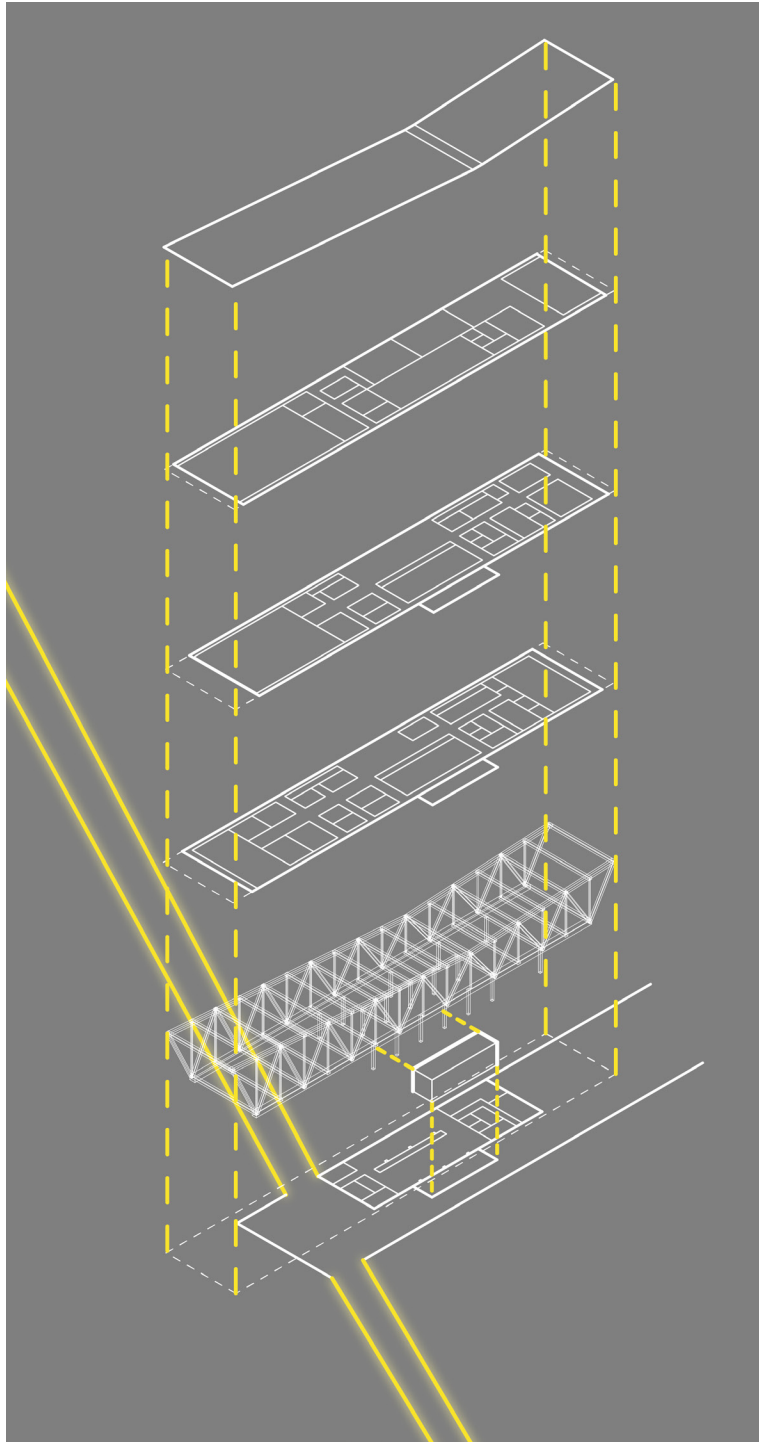


View from Harbor Line Looking Cultural Hub

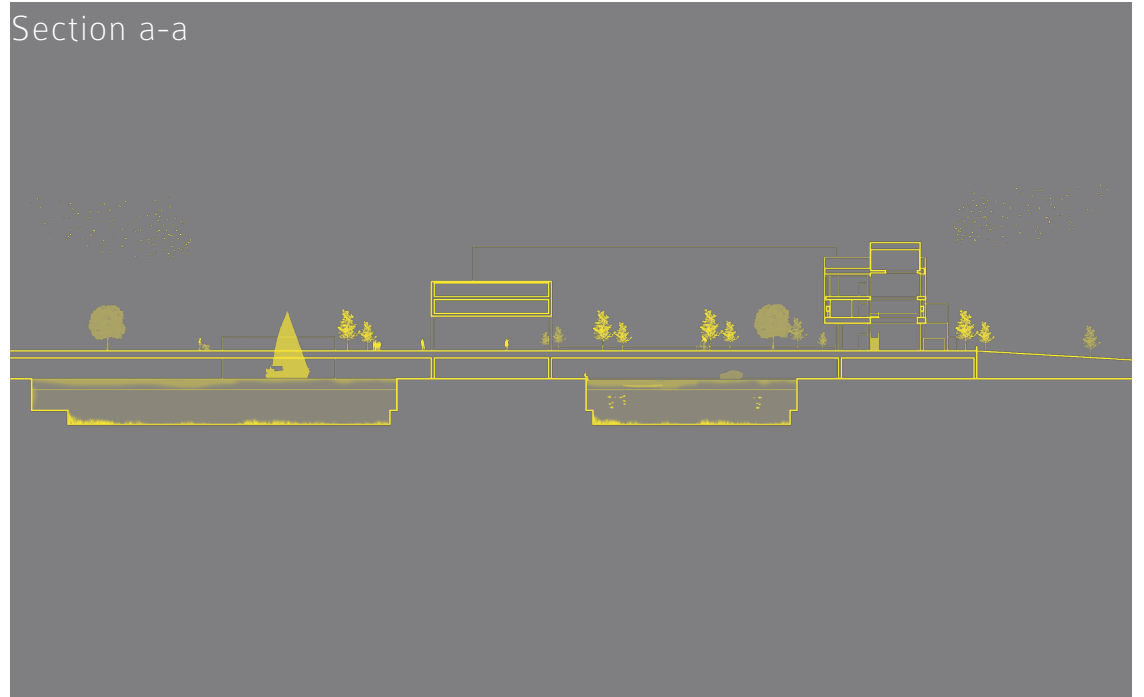


View from Harbor Line Looking at the communities

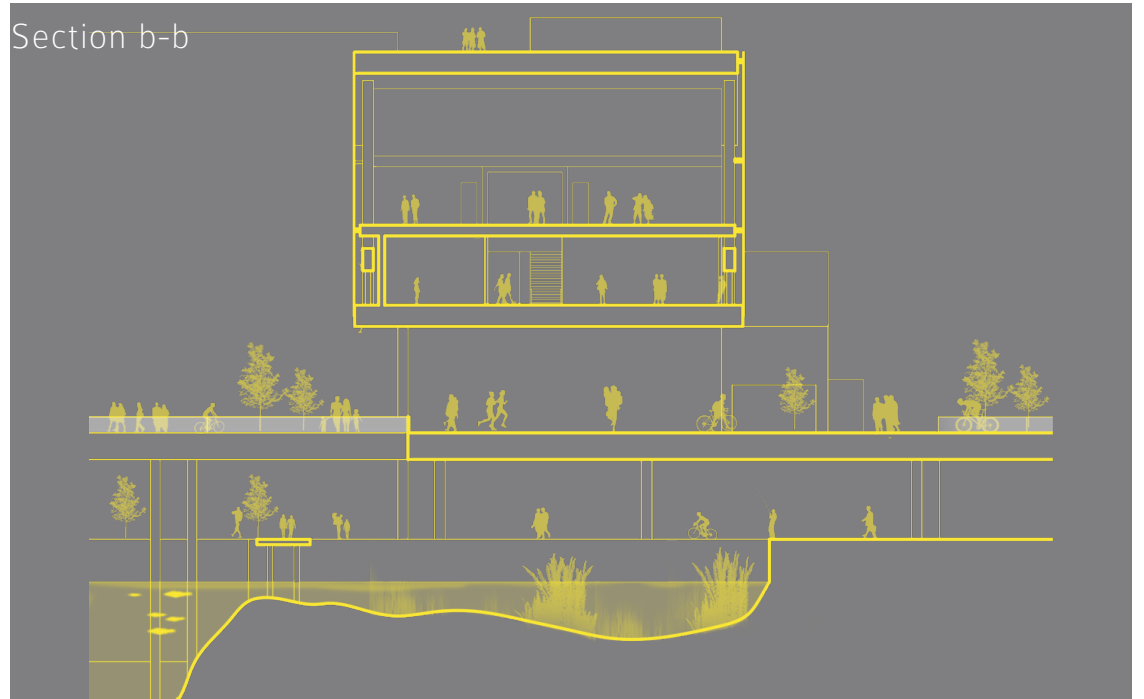




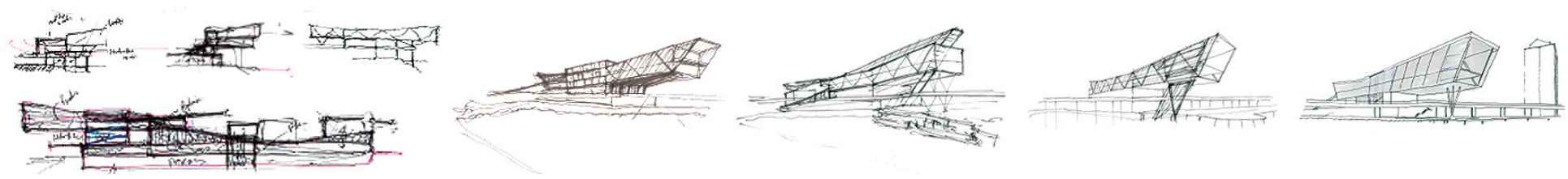
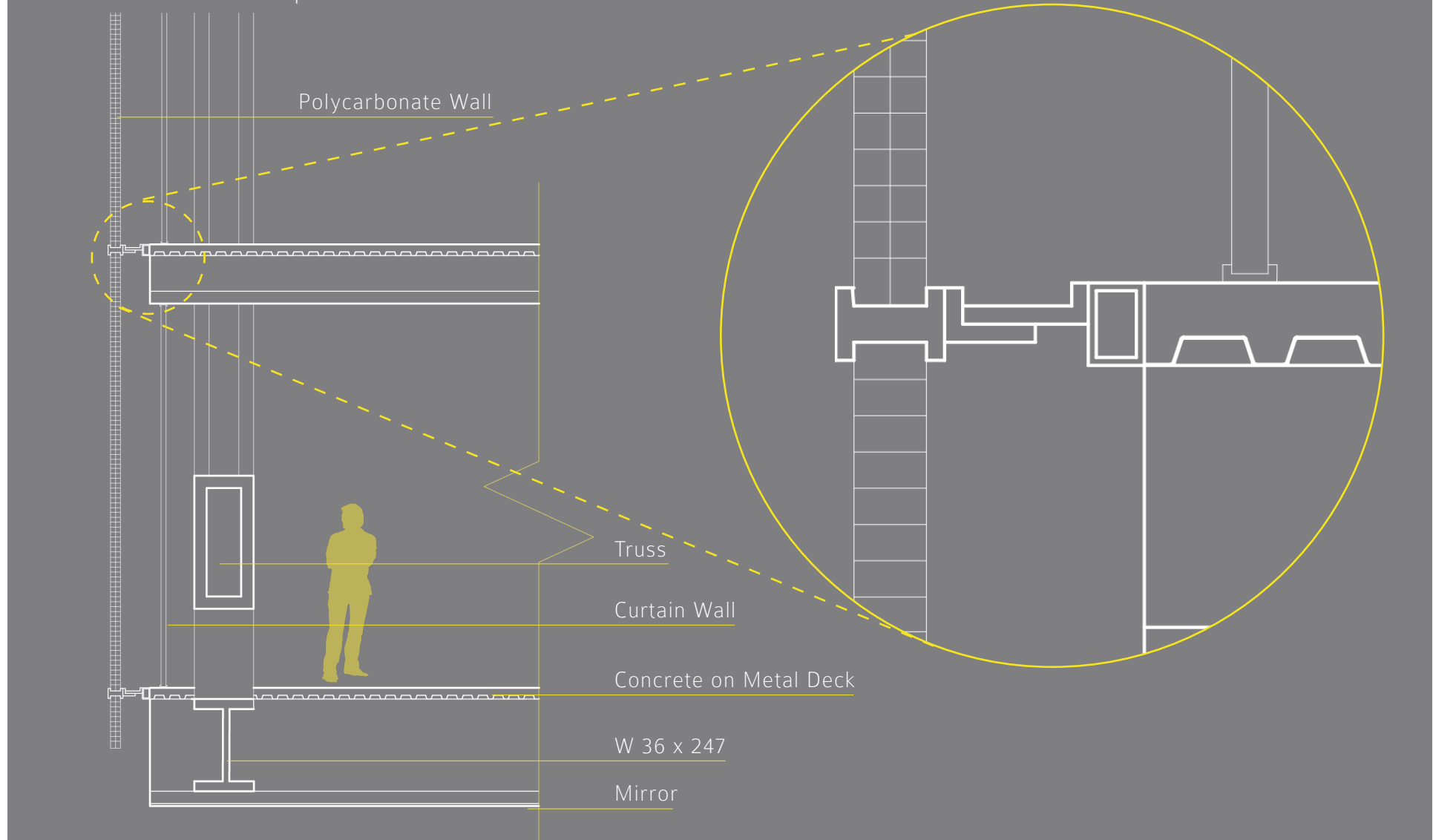
Section a-a



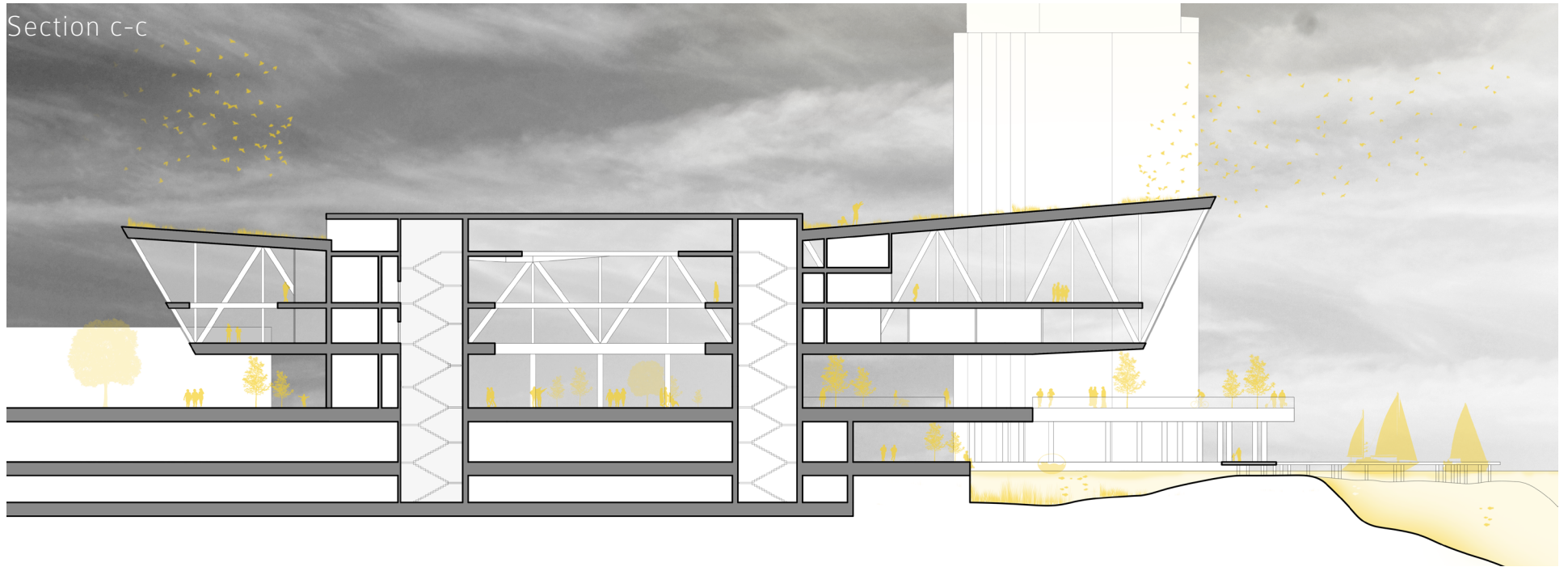
Section b-b



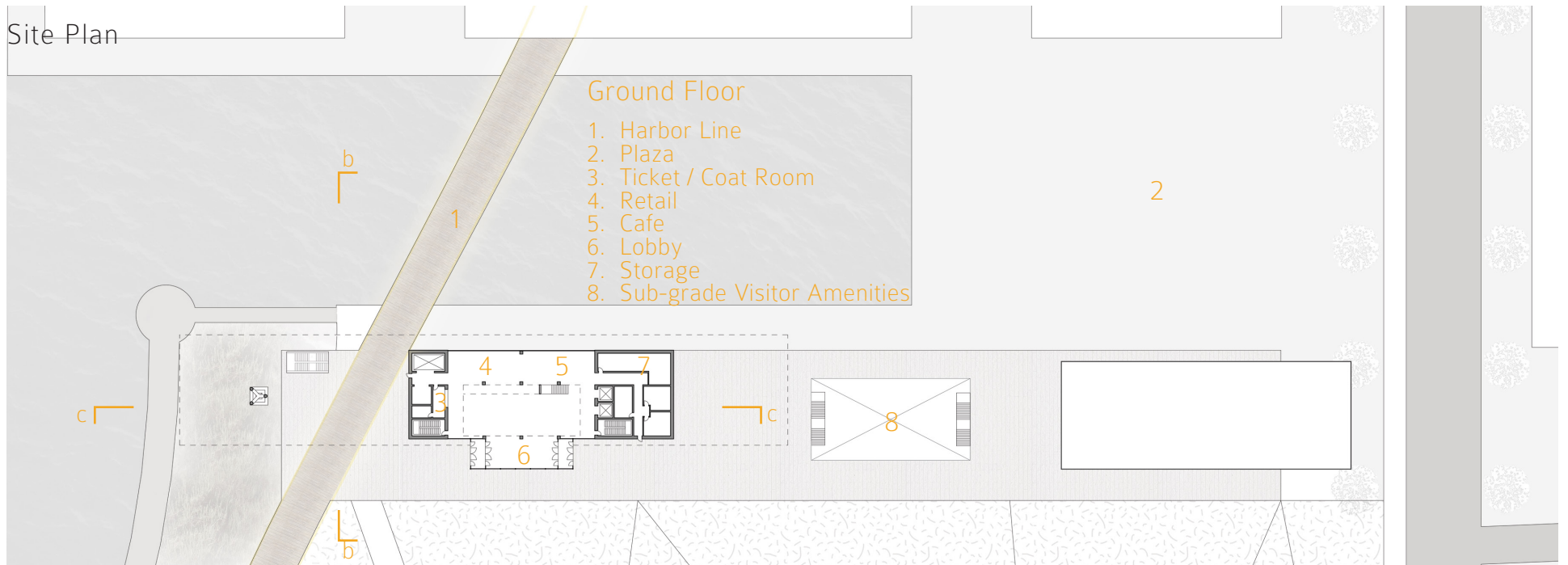
Section Detail on Envelope



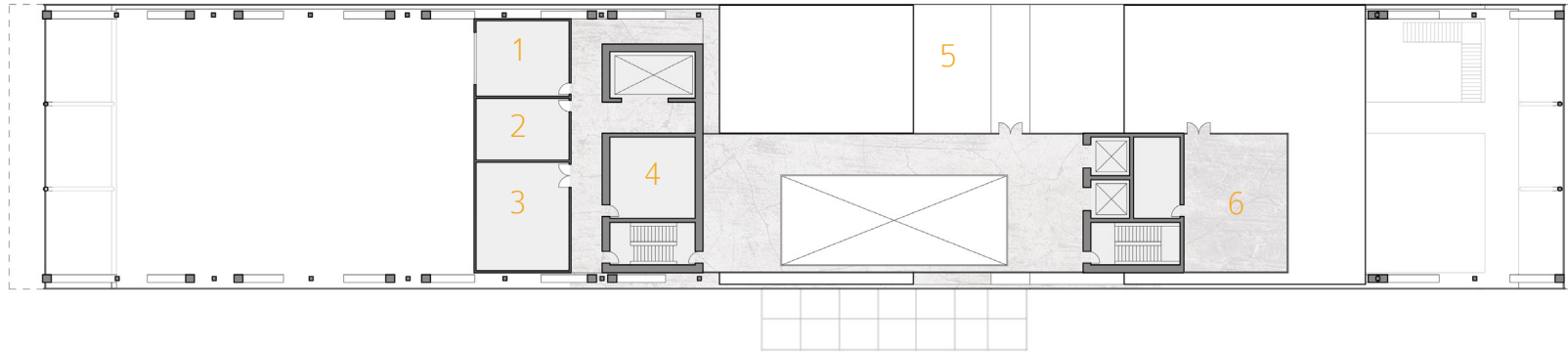
Section c-c



Site Plan

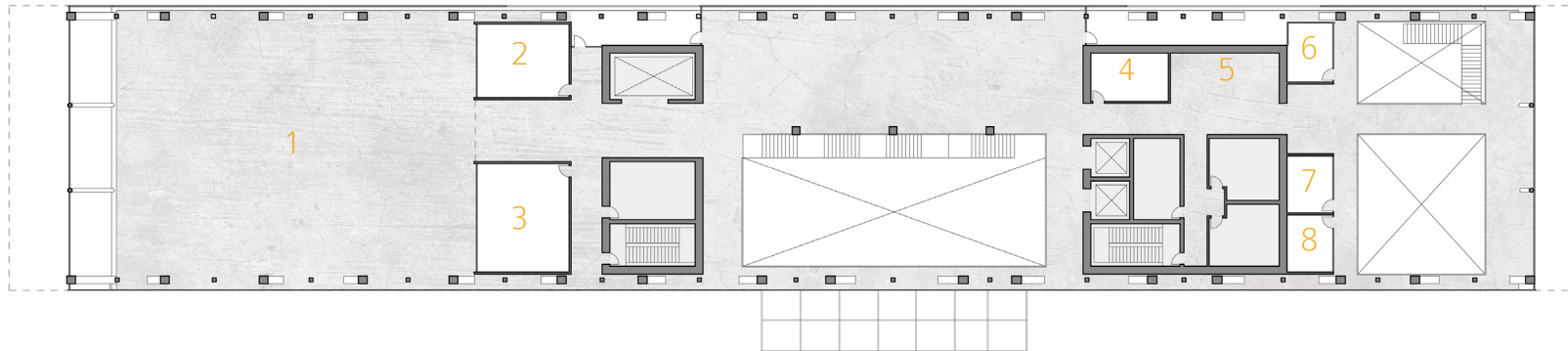


Floor Plans



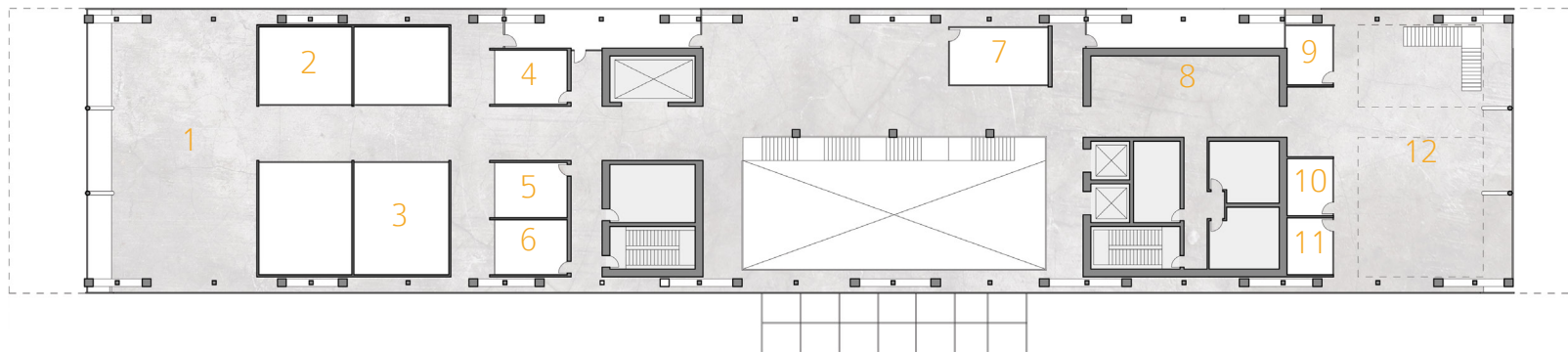
Roof Floor

1. Control Room
2. Maintenance Room
3. Storage
4. Mechanical
5. Rooftop
6. Private Event Space



Third Floor

1. Primary Exhibition
2. Lecture Room A
3. Lecture Room B
4. Green Room
5. Staff Lounge
- 6-8. Offices



Second Floor

1. Collaboration Space
- 2-3. Maker Spaces
- 4-7. Classrooms
8. Lounge
- 9-11. Offices
12. Library

Bird-Eye View

