

# “COALESCE”

## WALTER P. CARTER ELEMENTARY & MIDDLE SCHOOL

BALTIMORE, MD

Baltimore City has recently incorporated a program donating 1 billion dollars to build new schools throughout Baltimore City; Walter P. Carter is on the list of schools to be rebuilt. Throughout the design process of the new Walter P. Carter School, we were engaged with school faculty and students, Baltimore City School leaders, and the larger community. Involvement and collaboration with the school and community was crucial to proposing design solutions to their new school.

The existing school is poorly programmed, and does a poor job serving the needs of the students, teachers, and faculty.

The new school will be a merging of two existing schools (Walter P. Carter and Guilford Elementary) with a future addition of Lois T. Murray (a special needs school), therefore the proposed design needs to fully support the needs and higher capacity of the merging. Using the Baltimore City School Education Specifications as our program, all spaces and services are accounted for.

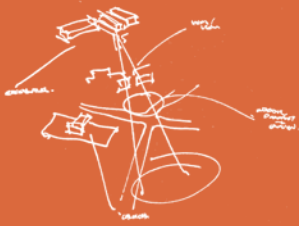
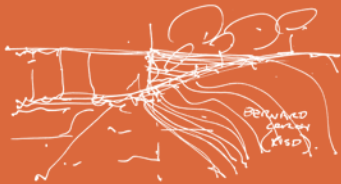


# Existing Conditions

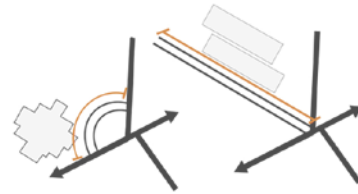


The existing drop-off lane had a limited curb perimeter of 315', causing major traffic issues during drop-off and pick-up times. By introducing the new Guilford Ave. the total perimeter of drop-off lane is increased to 750' (240% increase), decreasing traffic congestion drastically.

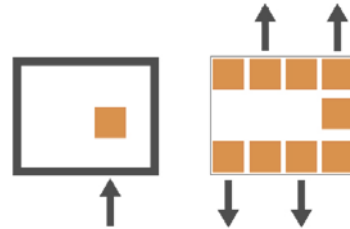
The existing school did a poor job of utilizing the large site. The steep topography on both edges of the site made it difficult to build on either edge. While the flatter North side of the site remained untouched and underutilized. The lack of connectivity from the North to South end of the site caused concerns for security and difficulty for public access. The school had an unusual presence on East 43rd Street, lacking a dominant main entryway.



EXISTING ENTRY ▶



TRAFFIC RESPONSE

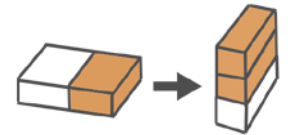


DAYLIGHT RESPONSE

By proposing a three-story height building, the estimated gross area of 127,000sq/ft was reduced by 10% down to approximately 113,000sq/ft. As a 21st century school, a major design priority was to allow each classroom to receive natural light. Previously, building services occurred on the second floor, causing creating inefficient dining services. By re-orienting the building footprint, building and dining services now occurs on the ground floor increasing service efficiency.



SERVICE RESPONSE

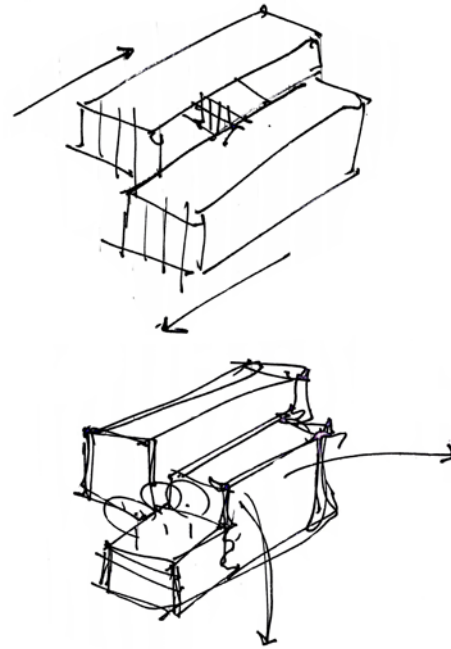


FOOTPRINT RESPONSE

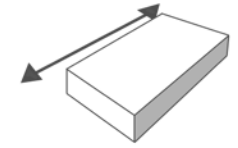


## New Frontage / New Identity

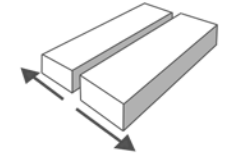
The major design “move” was to propose a new diagonal street through the site, allowing a connection to exist between the North and South end. This design proposal allows for two merging schools and the future addition of Lois T. Murray (special needs school) to function using the new Guilford Ave. as it’s main public access. The large amount of curb surface area will more adequately handle the increased traffic flow from the increased number of students and faculty. Splitting the larger programmatic spaces from the academic spaces gives the opportunity to serve the community after hours, without jeopardizing the security of the academic communities. The new design uses the complex site as a catalyst for the merging of the two schools. Re-introducing Guilford Avenue gives Walter P. Carter new frontage, a new address, and most importantly a new presence.



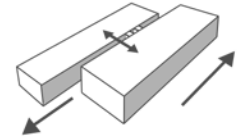
**NEW FRONTAGE**



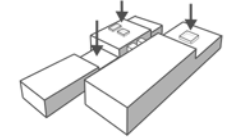
**SPLIT COMMUNITY /  
ACADEMIC**



**SHIFT AND CONNECT**



**ROOFTOP TERRACE &  
SKY PORTALS**

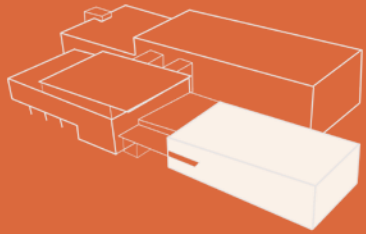


**STREET ENTRY RENDER**

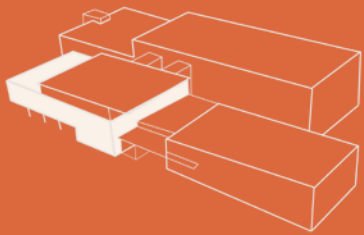


# Spatial Order

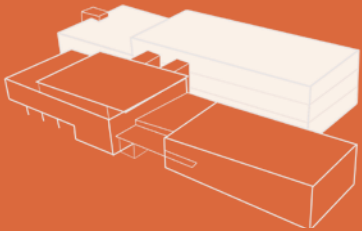
The proposed school is doubling the capacity and number of students. The design follows all Baltimore City School Ed. Specs and accounts for all spaces needed to fully function as an Elementary/Middle School during day-time hours, and allows to serve the community after hours.



DINING SPACE / AUDITORIUM



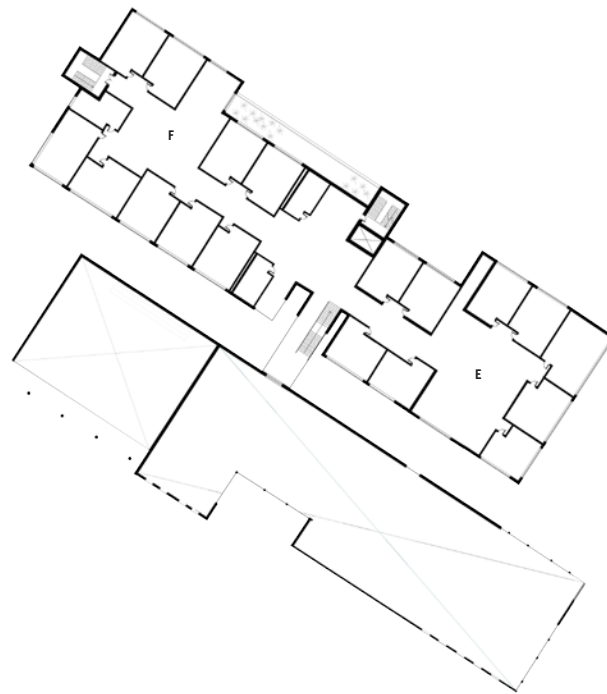
GYMNASIUM



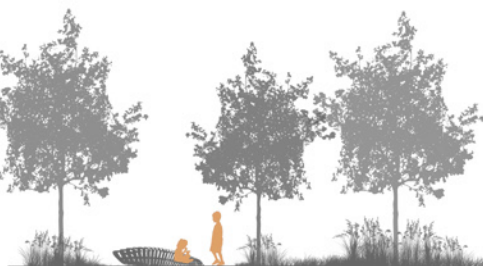
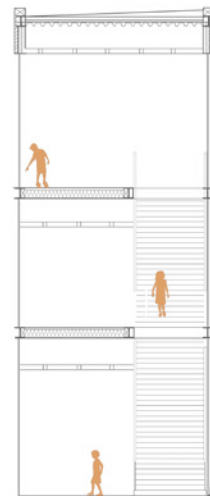
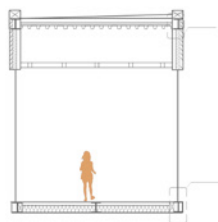
ACADEMIC WING

SITE PLAN ▶

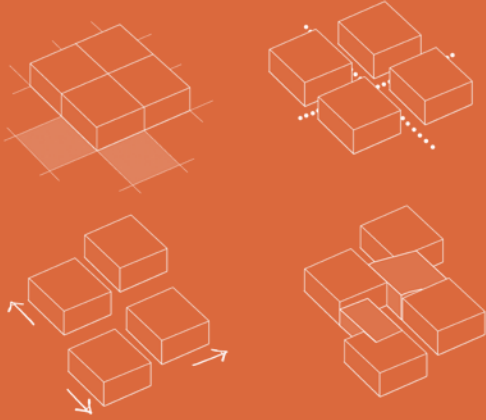




- A. ADMINISTRATION
- B. STUDENT SERVICES
- C. PRE-K - KINDERGARTEN
- D. GRADES 1&2
- E. GRADES 3&4
- F. GRADES 5&6
- G. GRADES 7&8
- H. SPECIAL ED
- I. TEACHER PLANNING
- J. MAKER LAB
- K. MUSIC
- L. GYMNASIUM
- M. DINING SPACE



# Adaptive Learning Environments



CLUSTER SPACIAL EXPLORATIONS ▲

COLLABORATION SPACE VISUALIZED ►

Research and experimentation with 21st Century Learning School models lead to the design of the learning communities. The layout supports a variety of learning pedagogies. Collaboration and seamless access to technology is crucial to the development of children today.



A. B. C.

A. Gathering / Presentation  
 B. Variety / Individualized Learning  
 C. Typical / Conventional Classroom

TYPICAL LEARNING CLUSTER ►

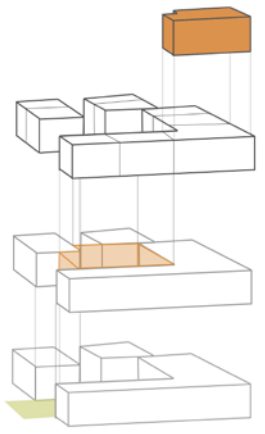


CLASSROOM

LEARNING CLUSTER

COLLABORATION SPACE

OUTDOOR LEARNING



CLUSTER ORGANIZATION ▲

