

CHAPEL OF REFLECTION

DENALI, ALASKA, USA

COMMUNITY COLLEGE DESIGN PROJECT SUBMISSION



This project was the design of an interfaith chapel with an outdoor gathering area located in a national park known for its unique natural features. The challenge was to create architectural forms capturing the symbolic features of the site through development and intense investigation of concepts and partis. The design will further demonstrate symbolism through a choreographed procession starting from the portal and arriving at the chapel.

This sacred mountain is located on Reflection Pond in the heart of Denali National Park and Preserve, due north of Denali. The design leads one on a spiritual journey to the most uplifting area of the park: The Chapel of Reflection.

Inspired by the geological features that have shaped the region over the past 56 million years, tectonic pressure has compressed plates causing the terrain to uplift from the surface of the earth. Influenced by this natural phenomenon, the design expresses converging forms that symbolize lateral pressure, creating a unifying force, an uplifting haven that bridges the religious and cultural chasms that have divided us.

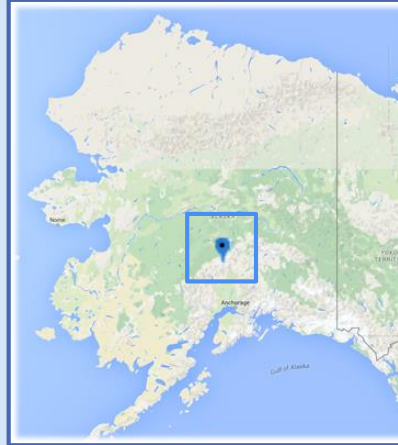
The oblique approach to the building from the parking lot, guides one through the Portal that creates a path of uplifting forms symbolizing lateral pressure that is immediately lifted upon entry into the vestibule. Proceeding through the vestibule, the building's main hallway opens to the south with a direct path to the chapel with views overlooking Reflection Pond with Denali in the background.

The design uses sustainable strategies such as natural daylighting through clerestory windows throughout the building. The structure itself is built using post and beam construction utilizing a compression ring to support the clerestory above the chapel. FSC certified heavy timber and laminated beams are used for the shell and regionally harvested and reclaimed material for the interior and exterior.

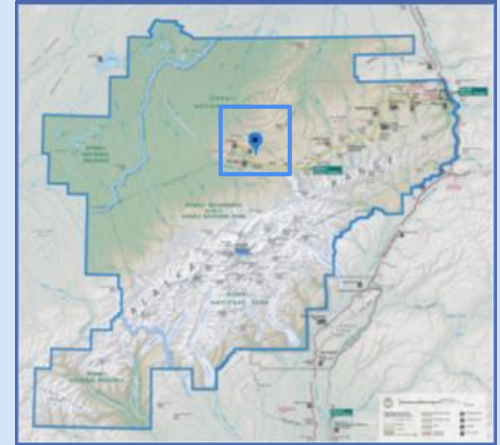
LOCATION

- ESTABLISHED FEBRUARY 26, 1917
- 6,028,203 ACRES
- DENALI (MOUNT MCKINLEY) – 20,310'
- 92-MILE PARK ROAD
- DIVERSE WILDLIFE

DENALI, ALASKA



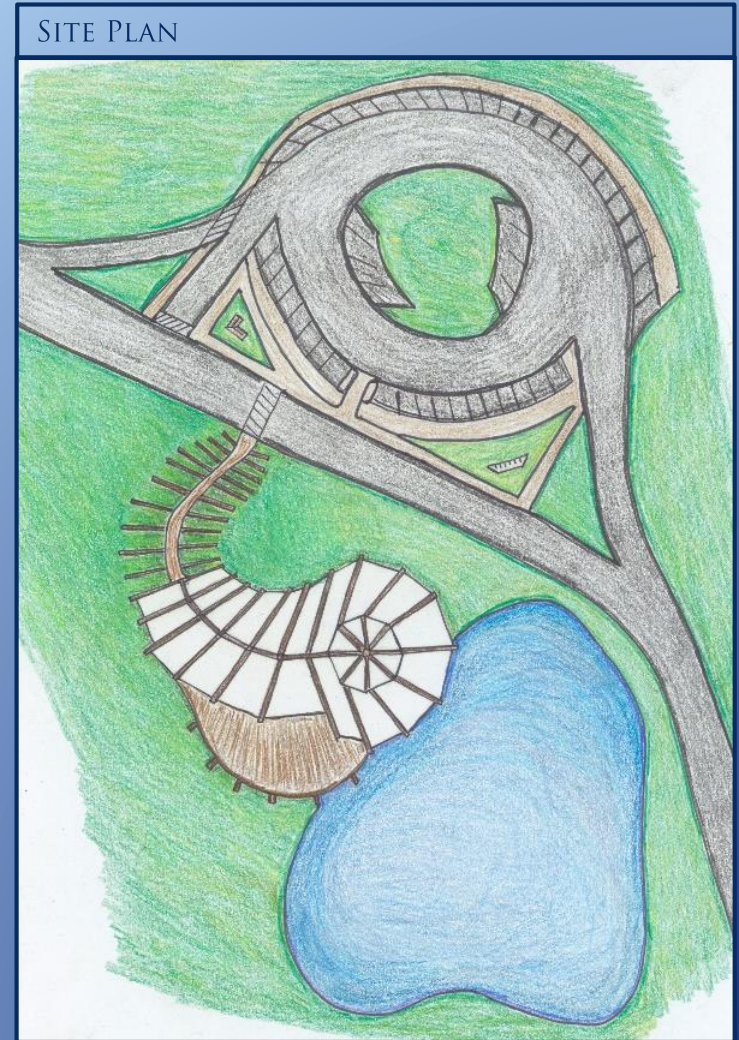
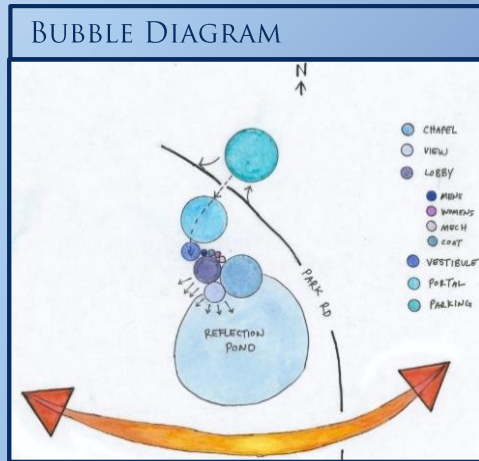
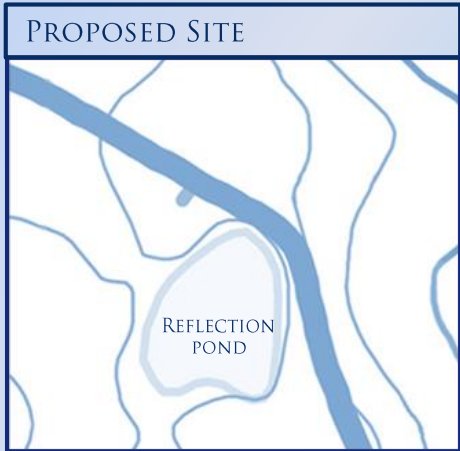
DENALI NATIONAL PARK MAP



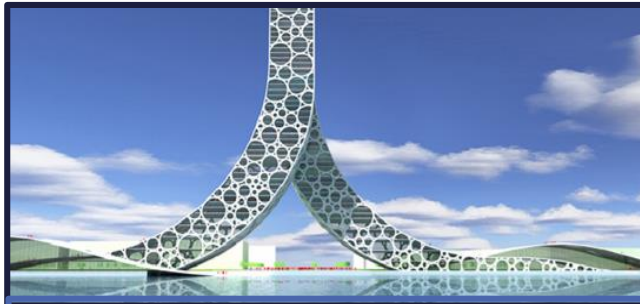
“SUBARCTIC SERENGETI”



SITE ANALYSIS



INSPIRATIONAL IMAGES



REN BUILDING, - SHANGHAI PROPOSAL
BJARKE INGELS GROUP



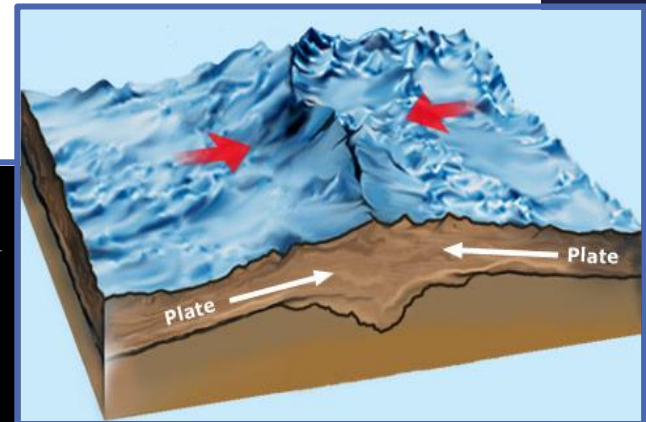
POLARIA - TROMSØ, NORWAY
UNKNOWN



STRANDKANTEN-TROMSØ, NORWAY
70°N ARKITEKTUR

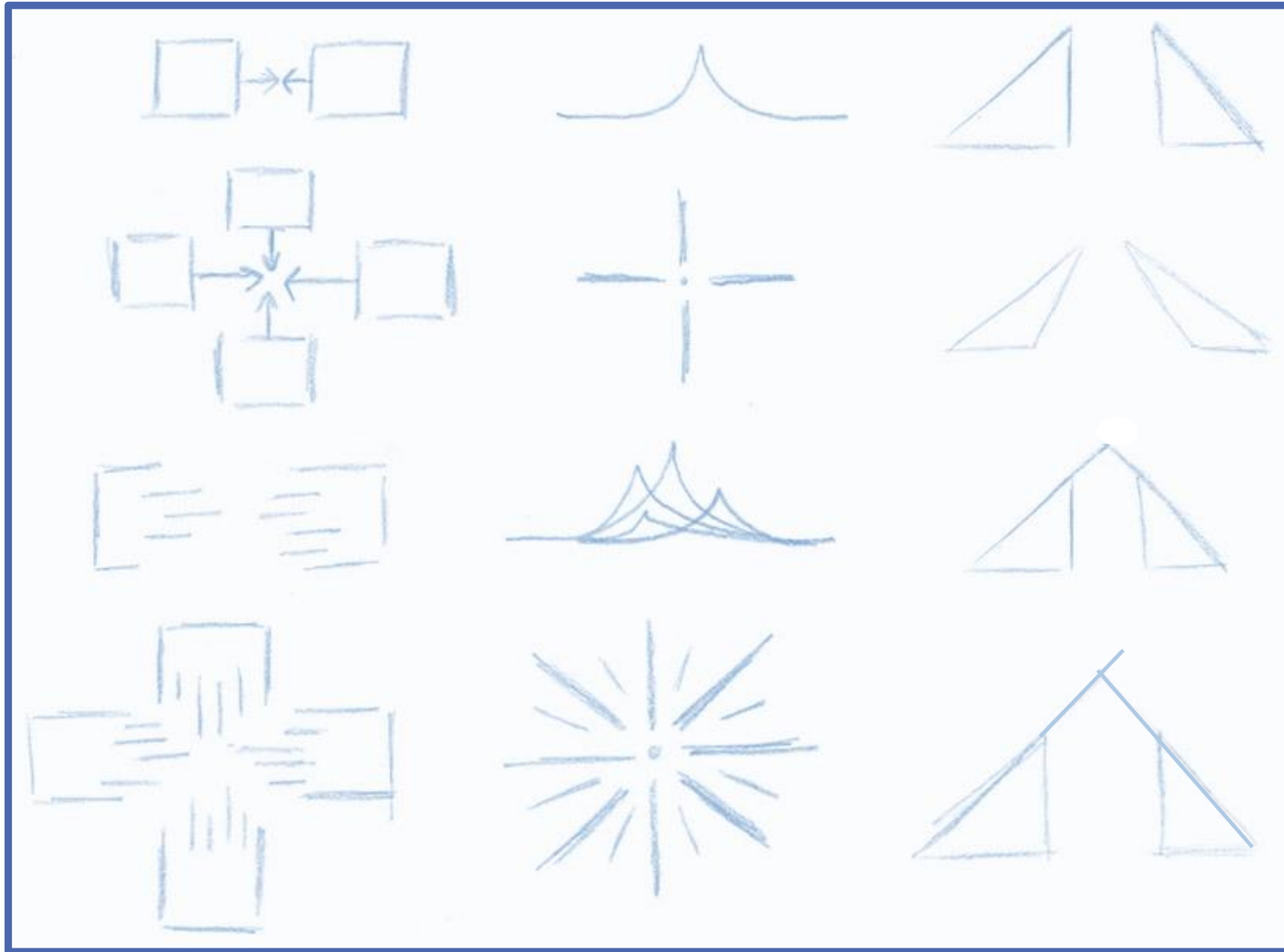


THE PUERTA DE EUROPA - MADRID
PHILIP JOHNSON & JOHN BURGEE

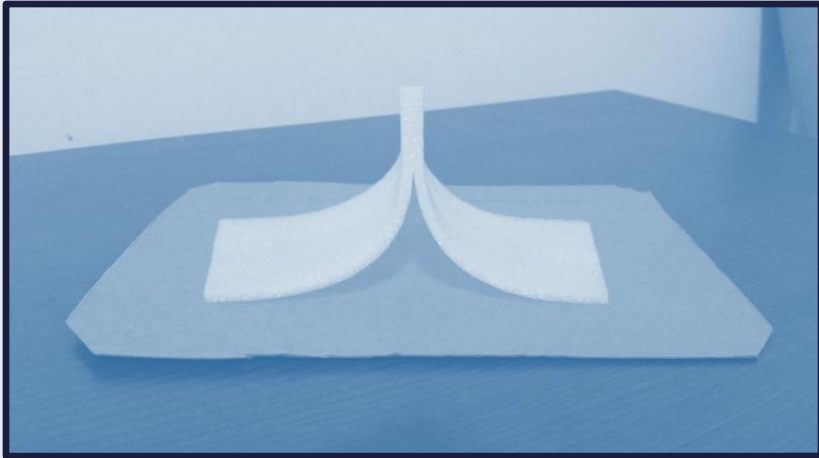


THESE IMAGES REPRESENT A
LATERAL PRESSURE, WITH
AN END RESULTANT IN AN
UPLIFTING MASS.

PARTI DIAGRAMS

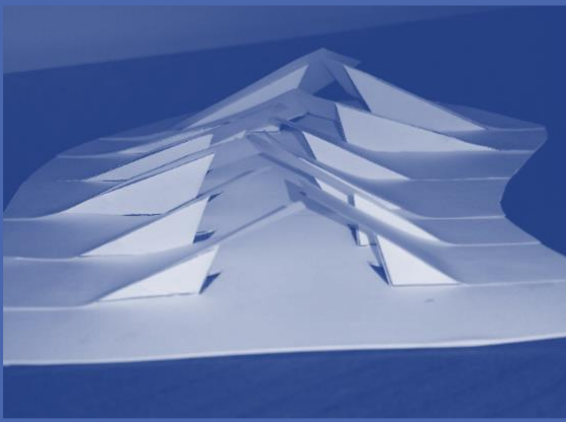


PARTI MODELS

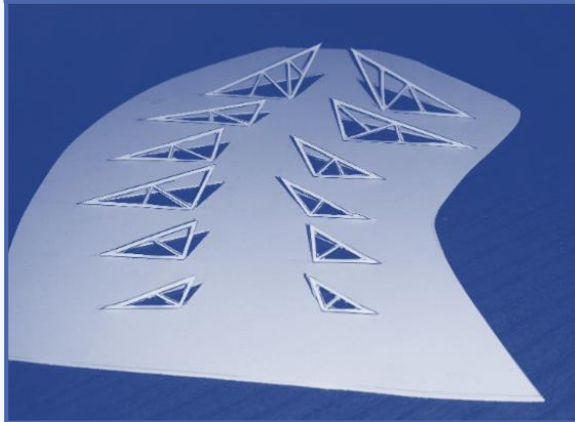


PARTI MODELS

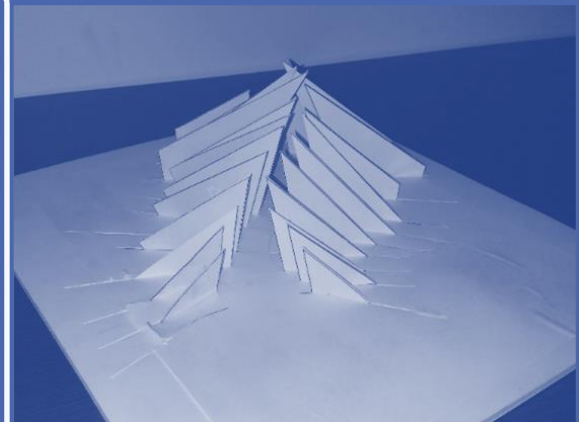
OPAQUE



TRANSLUCENT



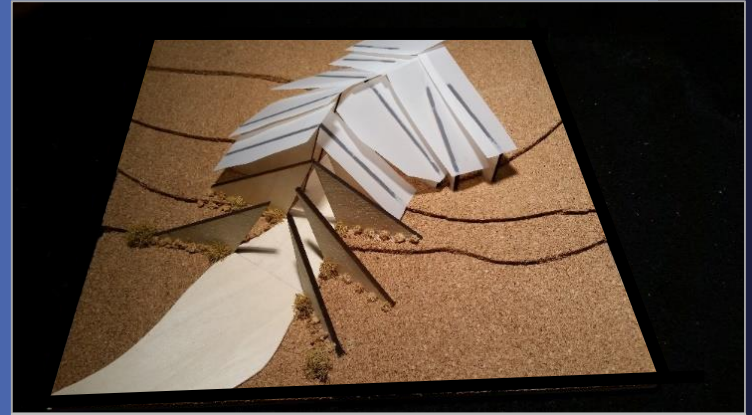
EVOLVED



PORTAL MODEL



ENTRANCE VIEW



AERIAL VIEW



WEST FACADE

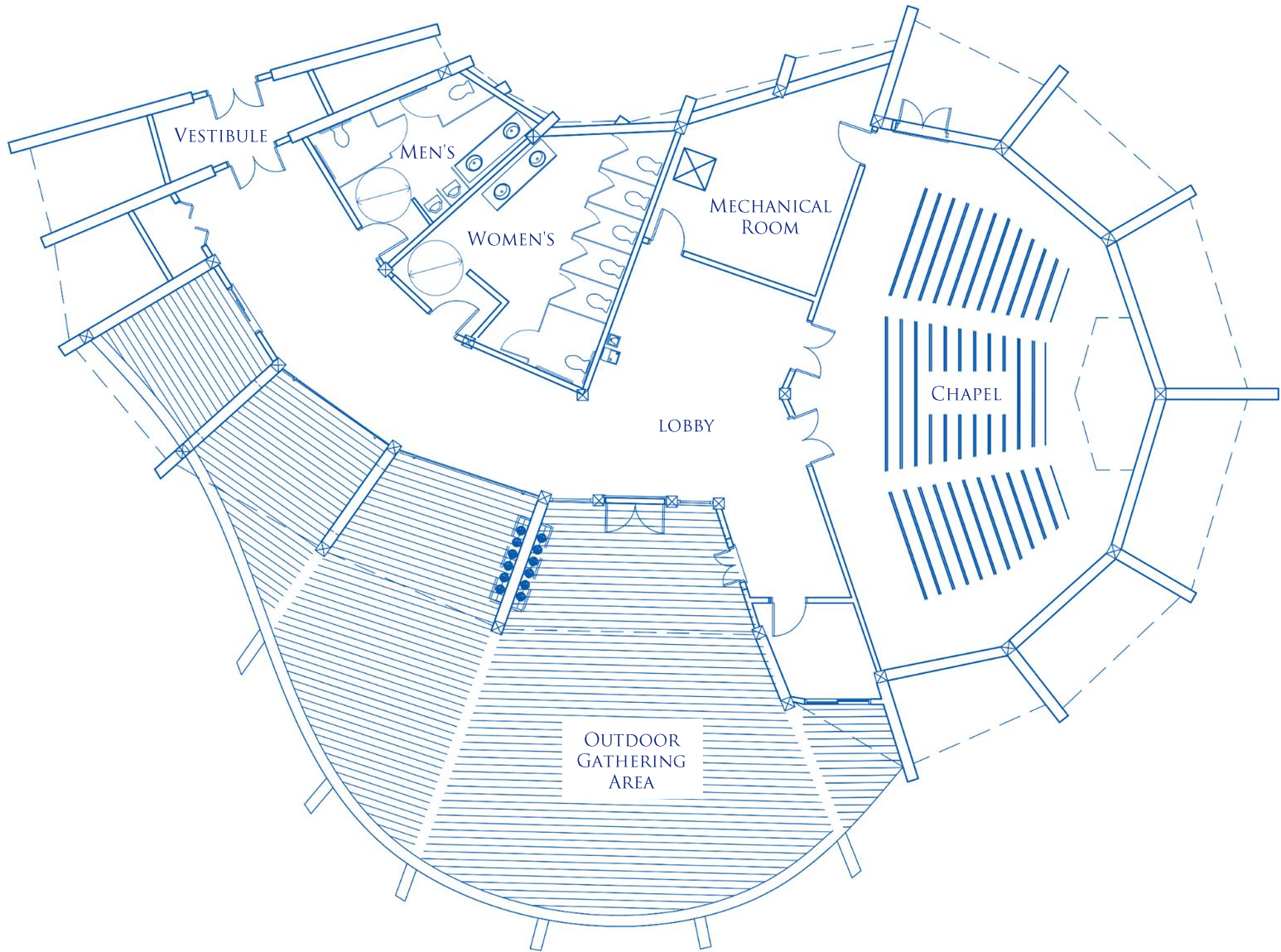
STUDY MODEL



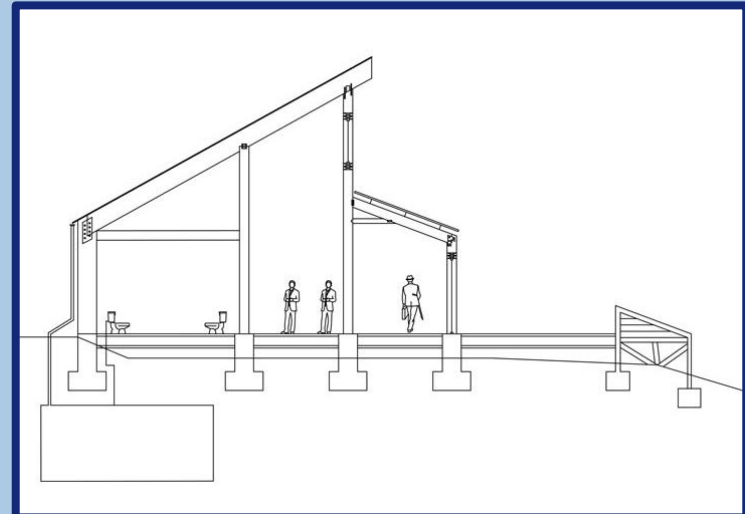
FINAL MODEL



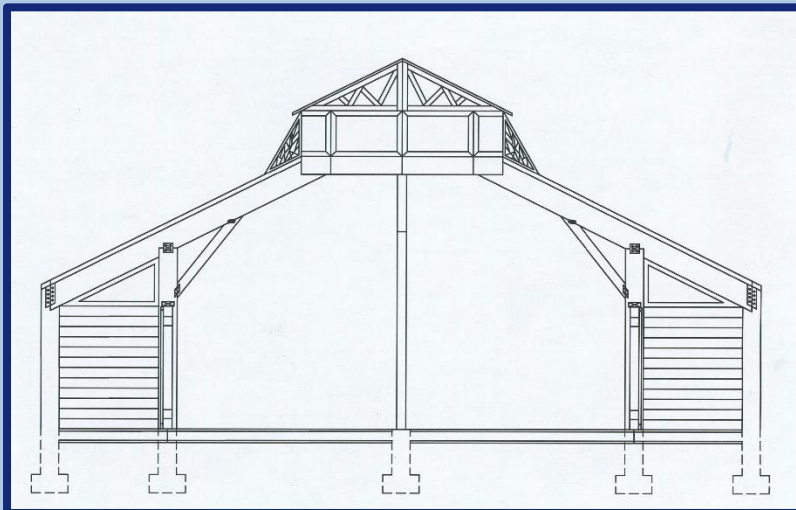
FLOOR PLAN



BUILDING SECTIONS

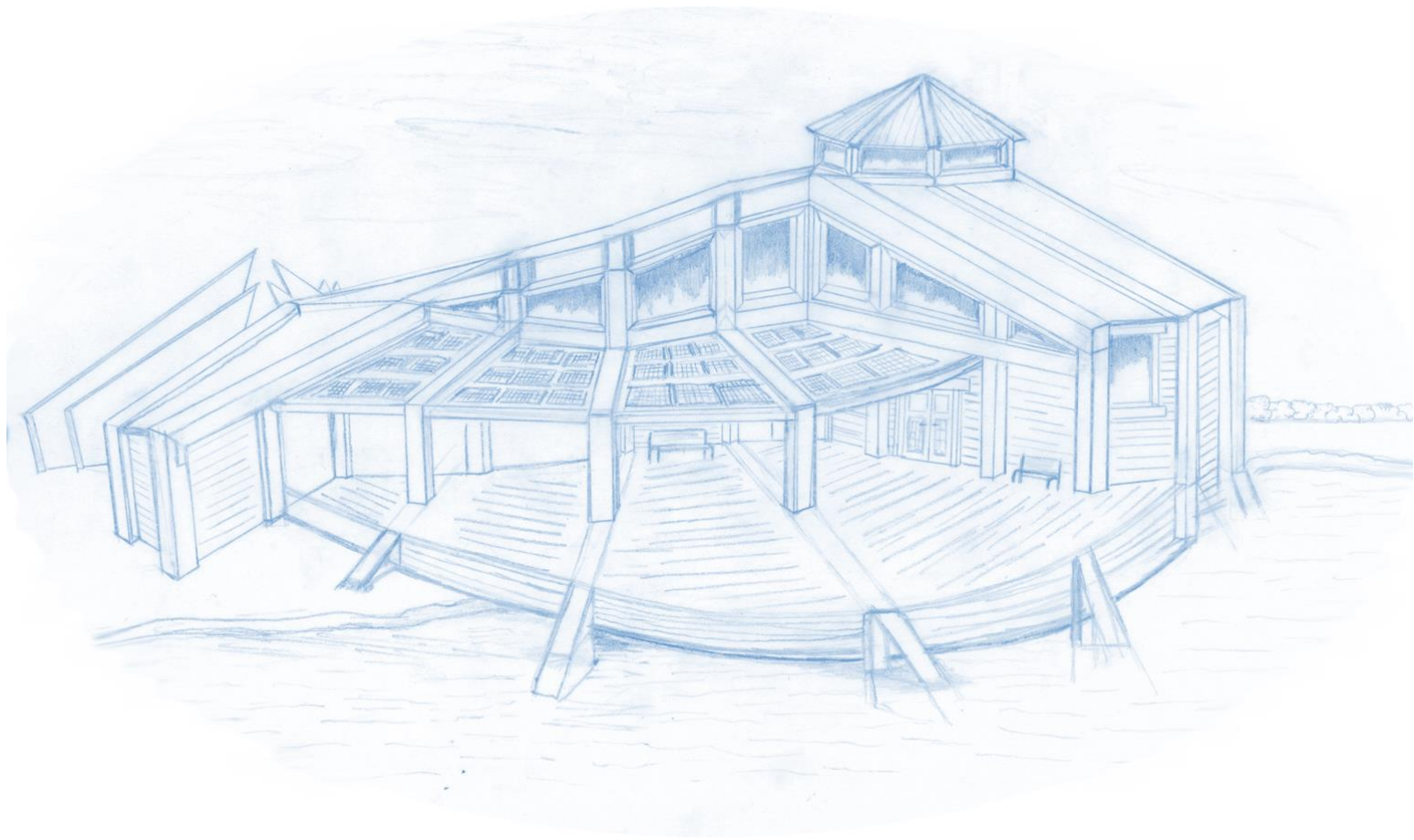


SECTION AT LOBBY



SECTION AT CHAPEL

PERSPECTIVE



PERSPECTIVE

