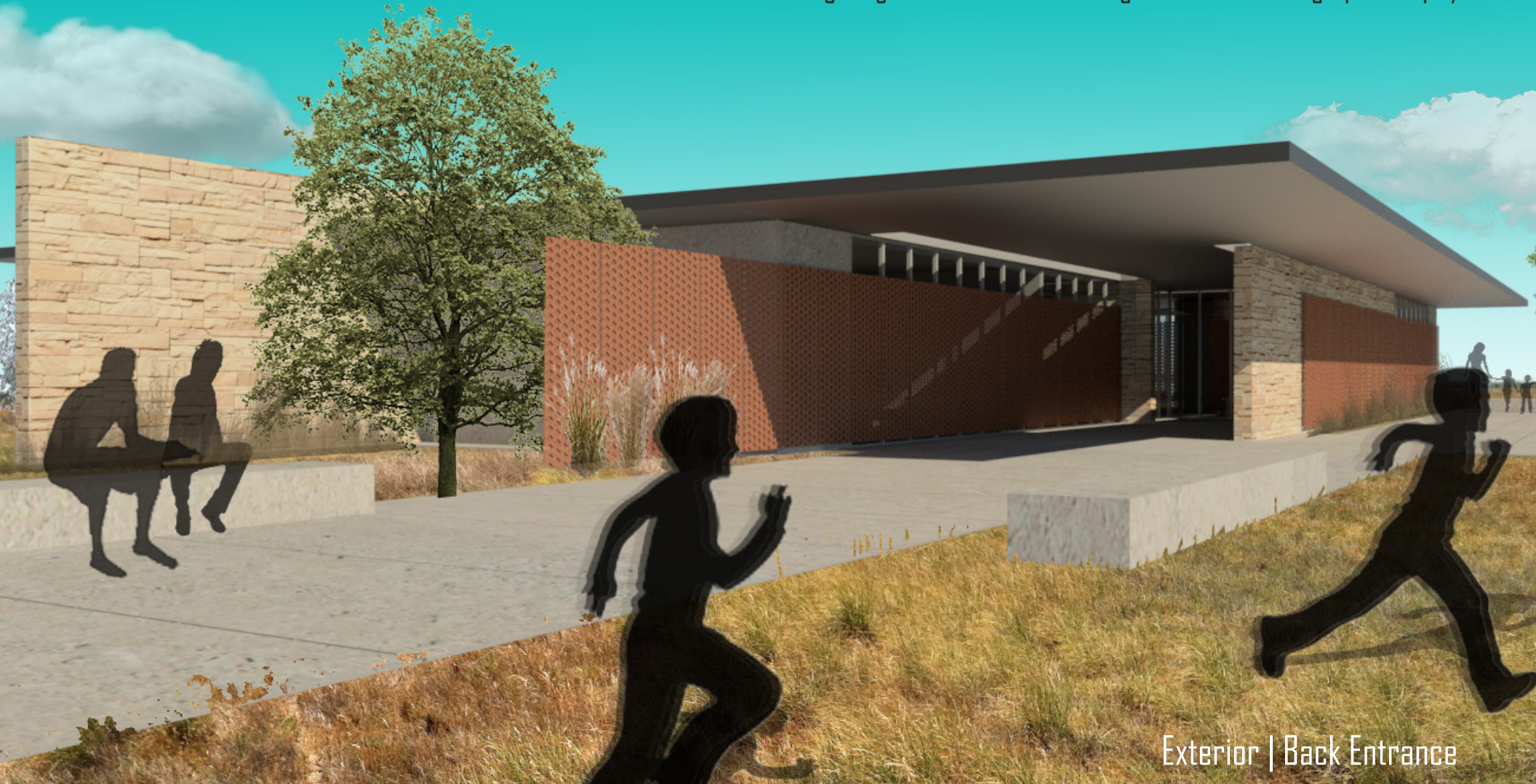


Between the Screen

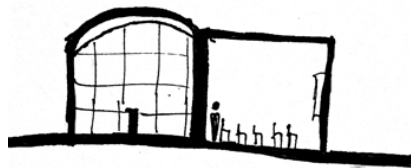
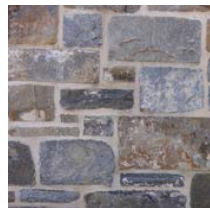
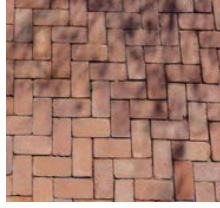
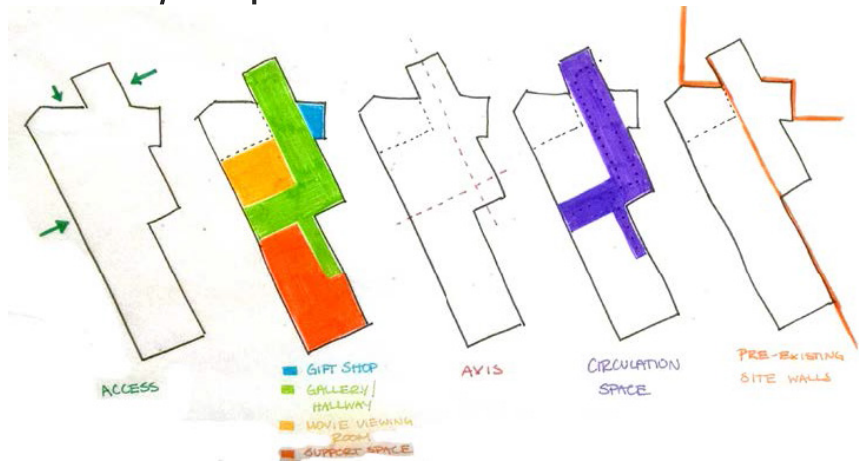
The goal of the assignment was to design a visitor's center for the Farnsworth House in Plano, IL. The existing site lacks a permanent structure that begins and facilitates the journey to the Farnsworth House.

Between the Screen is an in-depth exploration of Mies van der Rohe's work and incorporates a range of his techniques. The visitor's center is to support and complement the Farnsworth House while giving the visitor more insight to Mies's design philosophy.

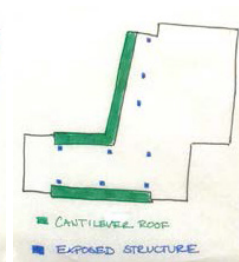
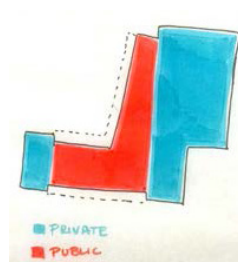
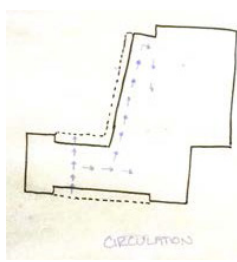
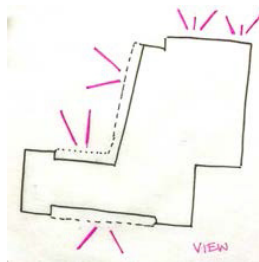
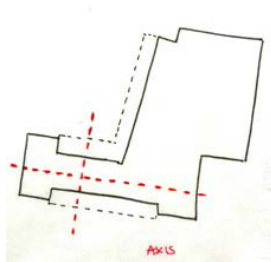


Exterior | Back Entrance

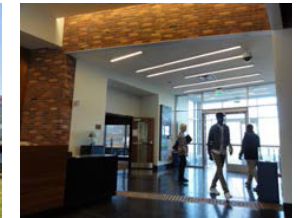
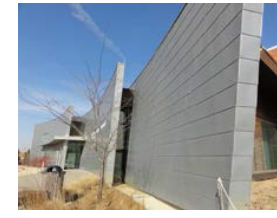
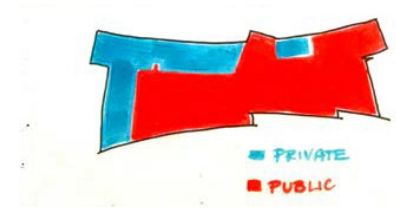
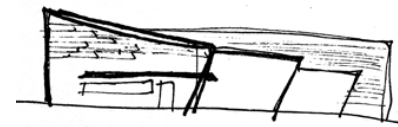
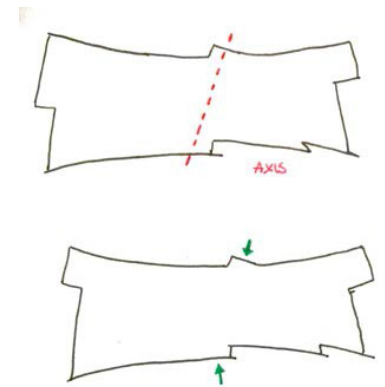
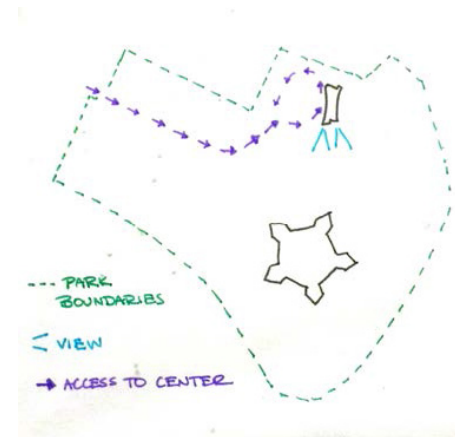
St. Mary's Spiritual Center



Cylburn Arboretum



Fort McHenry



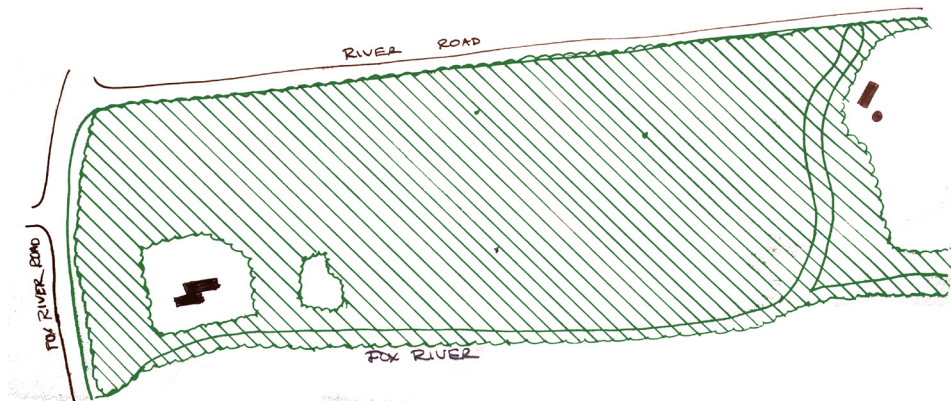
Visitor's Center Precedent Study

A study of three visitor's centers in Baltimore City to gain further knowledge and understanding on the most effective and practical way to design a formal visitor's center.

Site & Design Analysis

The landscape on the site naturally screens the Farnsworth House from the visitor. One of the priorities of the new visitor center is to set the stage for this relationship to prepare the visitor for their journey.

Landscape Site Diagram



Screening through landscape



- TREES PROVIDE SCREENING FROM HOUSE
- BLOCK / IMPEDE VIEW OF HOUSE

Screening through facade



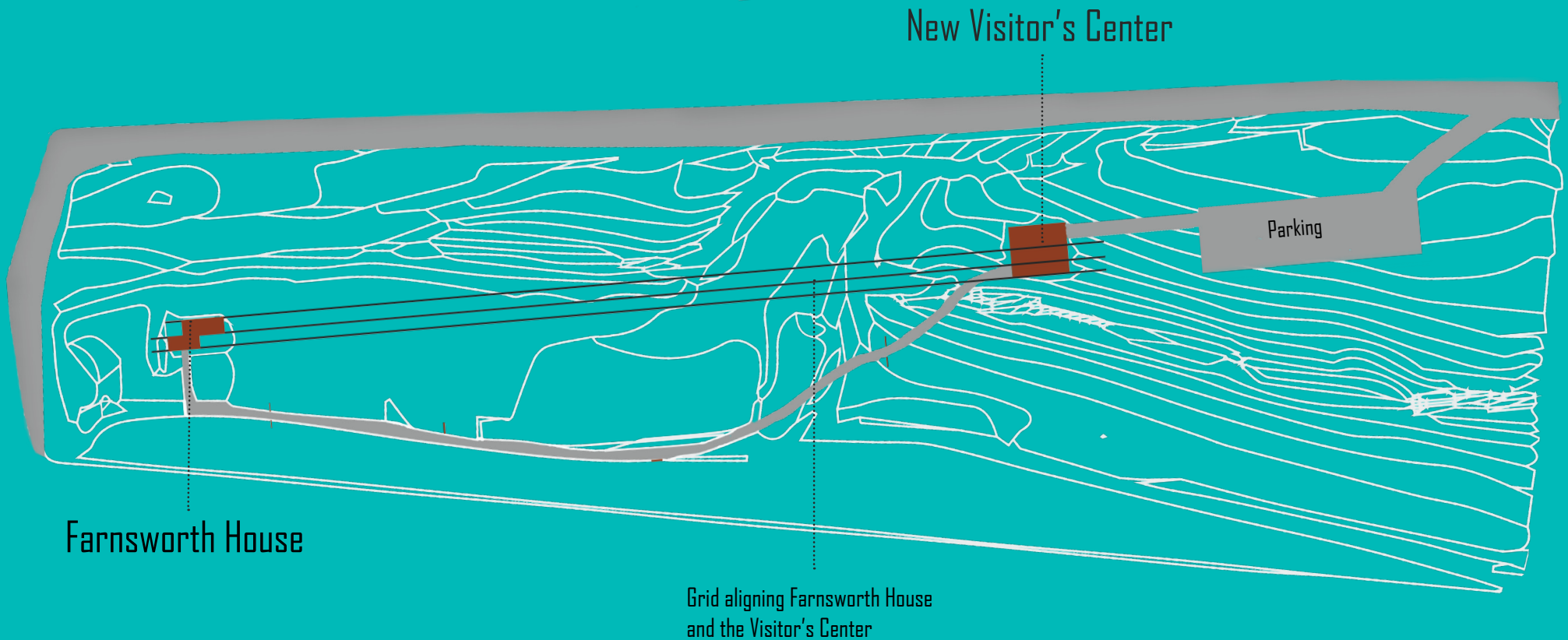
TREES IN
LANDSCAPE
(NATURAL
SCREENING)



FACADE CREATES A
SCREENING OF ENTRANCE



Site Plan



Having a grid was imperative to Mies's designs. Inspired by his work at the Illinois Institute of Technology campus, the new Visitor's Center is aligned with the grid of Farnsworth House. Along the path there are copper screens that connect the visitor's journey from the center to the Farnsworth House.

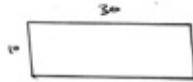


Program Analysis

Program Square Footage Requirements

Lobby/Tickets - 300 sqft

$300 = 10 \times 30$



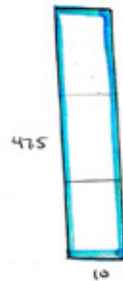
15×20



STAFF
PUBLIC
UTILITIES

TOILETS = 475 sqft

$475 = 10 \times 47.5$



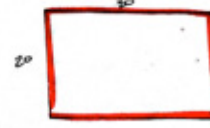
STAFF OFFICE 400 sqft

$400 = 10 \times 40$



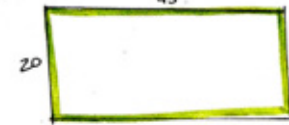
STAFF BREAK ROOM +
KITCHEN 600 sqft

$600 = 20 \times 30$



MULTI PURPOSE GYMNASIUM 900 sqft

$900 = 45 \times 20$

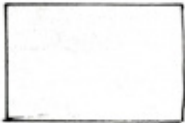


$900 = 60 \times 15$



INTERPRETIVE
600 sqft

$600 = 30 \times 20$

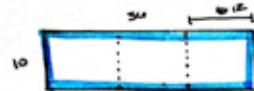


CONFERENCE ROOM
300 sqft

15×20



GENERAL STORAGE 300 sq
5 - 120



MECHANICAL ROOM 140 sqft

$140 = 14 \times 10$



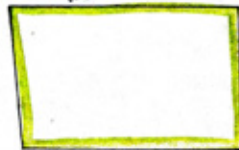
$600 = 60 \times 10$



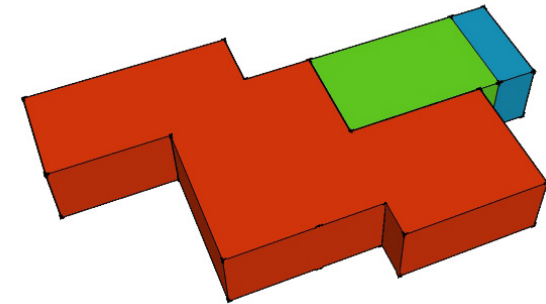
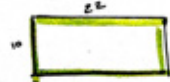
↑ COULD THIS BE CIRCULATION?

GIFT SHOP w/ STORAGE
1300

40×25



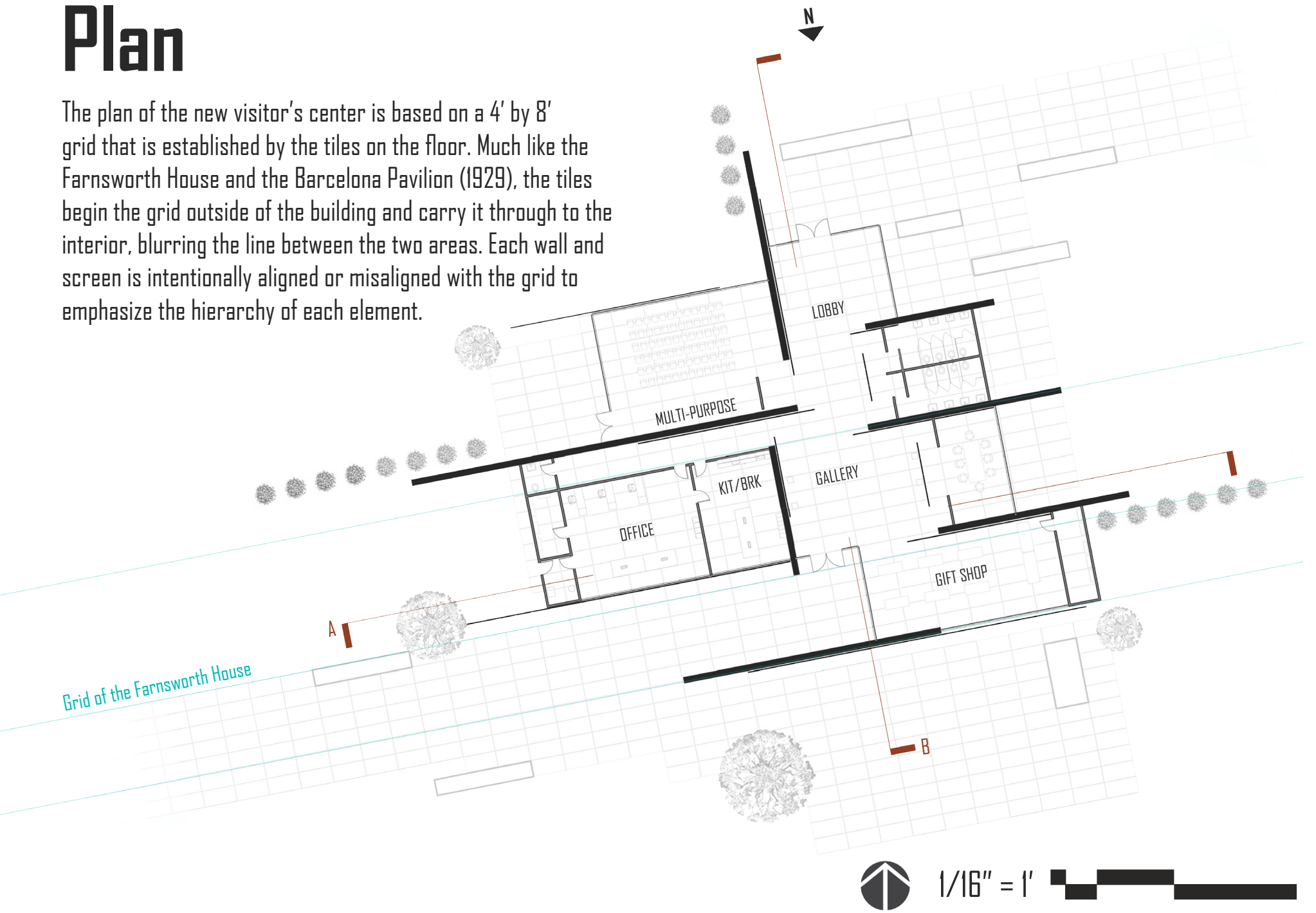
CIRCULATION 225



Initial Massing Model

Plan

The plan of the new visitor's center is based on a 4' by 8' grid that is established by the tiles on the floor. Much like the Farnsworth House and the Barcelona Pavilion (1929), the tiles begin the grid outside of the building and carry it through to the interior, blurring the line between the two areas. Each wall and screen is intentionally aligned or misaligned with the grid to emphasize the hierarchy of each element.

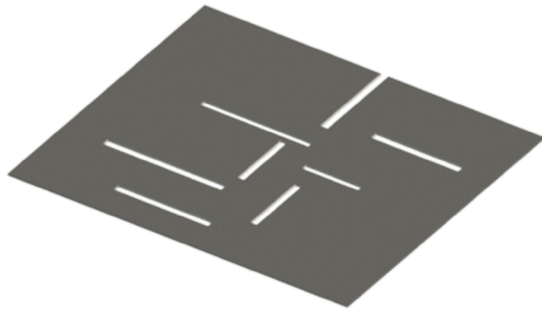


1/16" = 1'



Exploded Axon

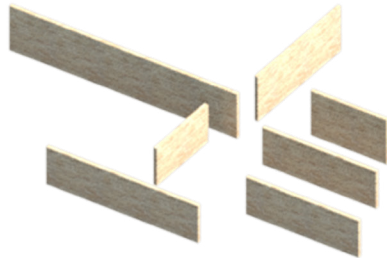
Roof & Light Monitors



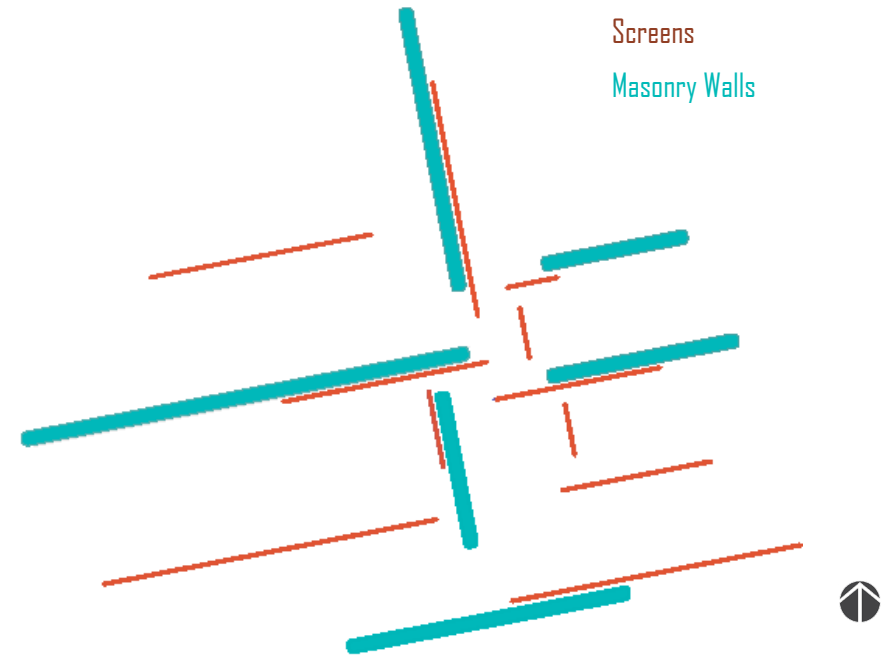
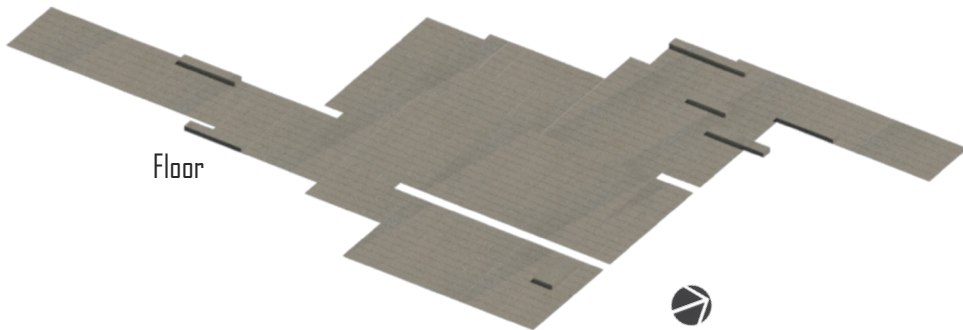
Copper Screens



Masonry Walls



Floor

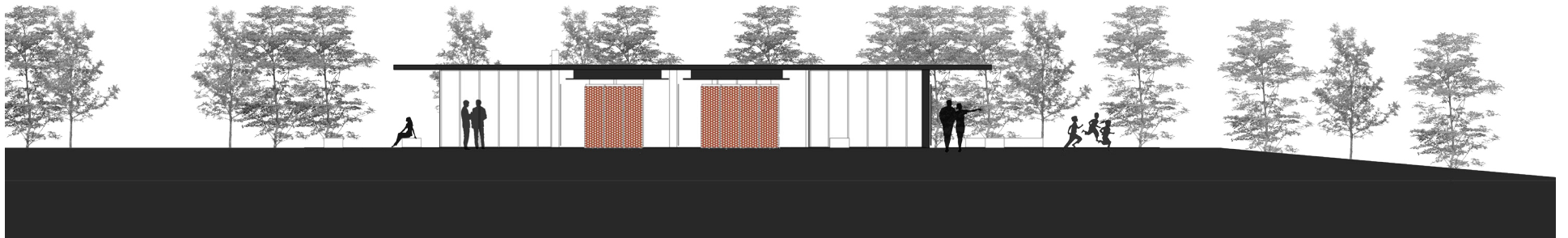
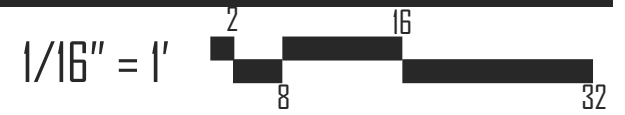


Inspired by Mies's 1923 Brick Country House Project, the plan of the new visitor's center uses a series of sliding planes to create rooms and spaces without using traditional interior walls. The copper screens run along the load bearing walls to extend the wall to give the visitor a peek into the next room without revealing the whole space - screening the user from the complete view.

Diagrammatic Plan



North Elevation
Entrance to the lobby



Section B
Circulation Space



Interior | Lobby

Section A

The new Visitor's Center is three times the size of the Farnsworth House but still follows a similarly strict grid. The flat roof and sliding planes allow for continuity between the building and the landscape; much like the relationship between the house and the landscape.



Exterior | Front Entrance



Section A

$1/32'' = 1'$ 