

# Contextual Bridges

---

Park Heights is currently one of Baltimore's thriving communities located approximately 10 minutes from Baltimore's Harbor Front. Once a Jewish community consisted of a thriving commercial district and supportive religious structures, has now become the a danger Park Heights residents. Park Heights continues to struggle with the lack of proper goods and services, low employment ratings, adequate living conditions and most importantly, a strong sense of place or something to that effect. What used to be a self established neighborhood is currently known as a struggling neighborhood. Churches in Baltimore have, and continue to participate in overseeing, reuniting and developing Baltimore's communities. They are the artifacts establishing a sense of place. Park Heights is lacking these qualities therefore, this design aims to reconnect Park Heights to its surrounding communities and restablish Park Heights using baltimore's thriving culture.





# Central Park Heights

Analysis



community sustainers over time



fast food (blue) to market ratio (green)



church locations around RFQ

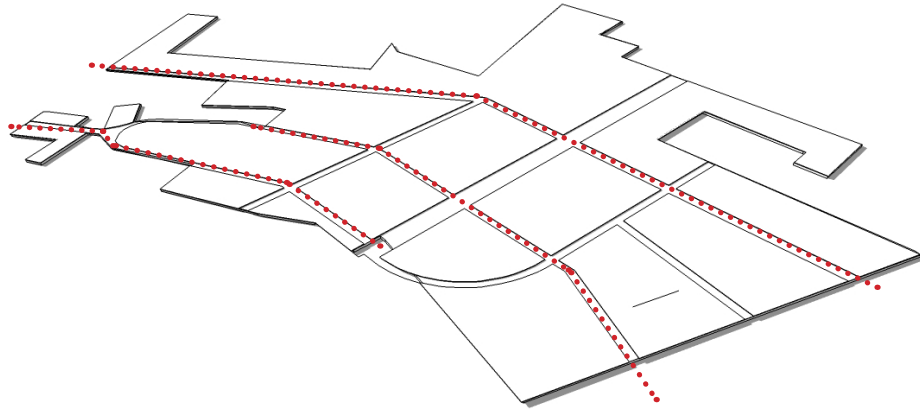


Downtown Baltimore

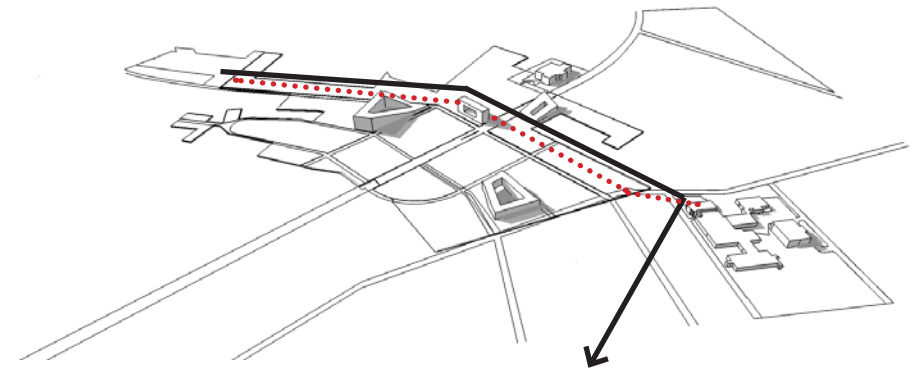


RFQ Area

# Targeted Decisions

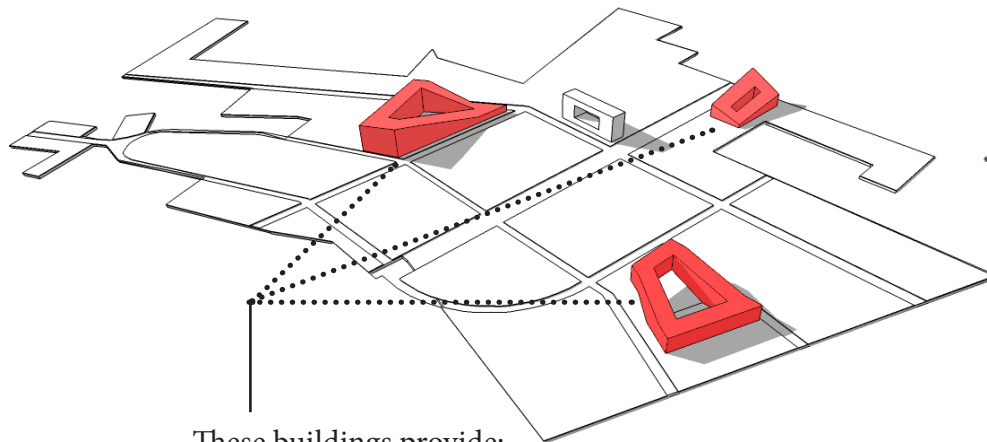


- Readjusting the roads for east to west connectivity.



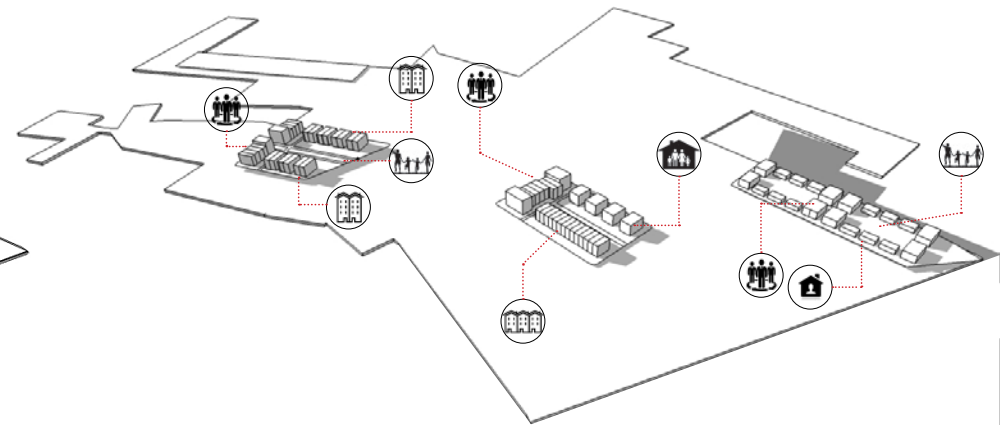
- A green walk, park, libraries playground and a safe way for children to walk from Pimlico Elementary school, to the Jack Paulsen Park.

- Sitting at the edge of the Park Heights RFQ boundary line, the green walk is within 5-10 minutes walking distance from multiple neighborhoods.



These buildings provide:

- Subsidized and Unsubsidized housing
- Artifacts of the community helping establish Park Heights and redefining its sense of place.
- employment- oppotunity for live/work options

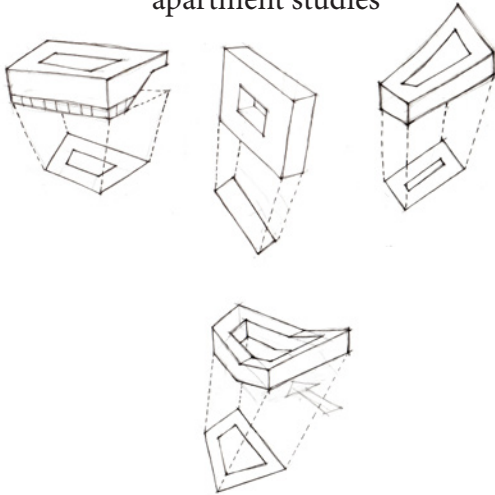


- Several blocks consist of multiple unit types. This eliminates gentrification and segregated neighborhoods

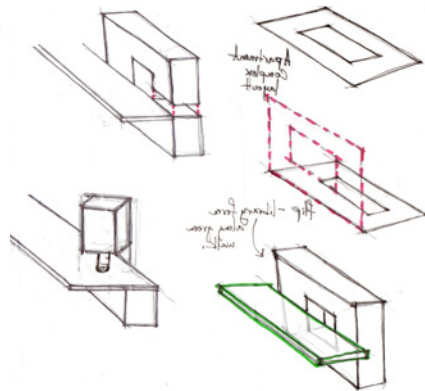


# Site Plan & Sketches

apartment studies



library studies



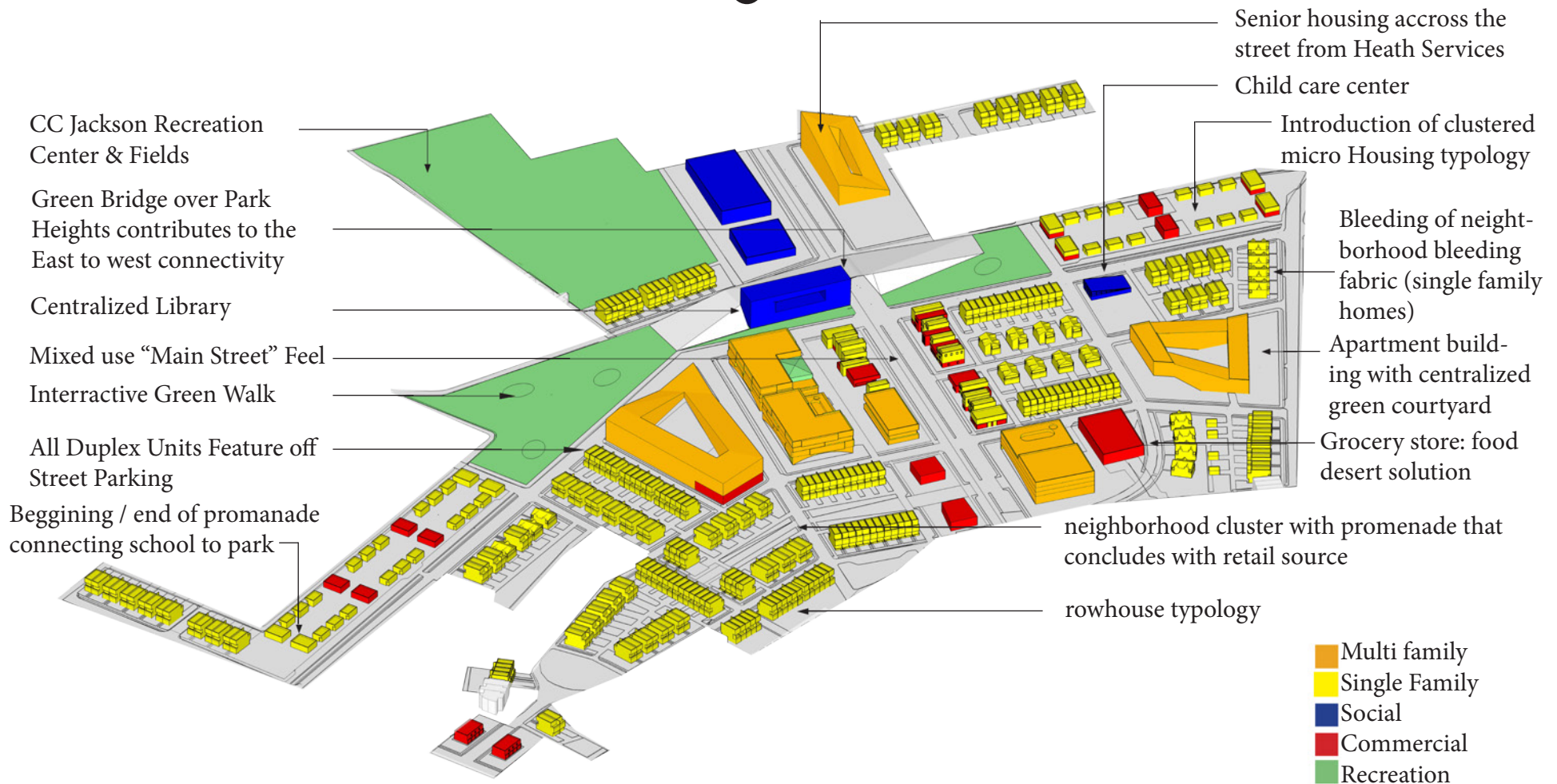
Green space diagram



Figure Ground



# Land Use Diagram



**Total of Housing Units: 637**

Multi- Family: 342

Single Family: 295

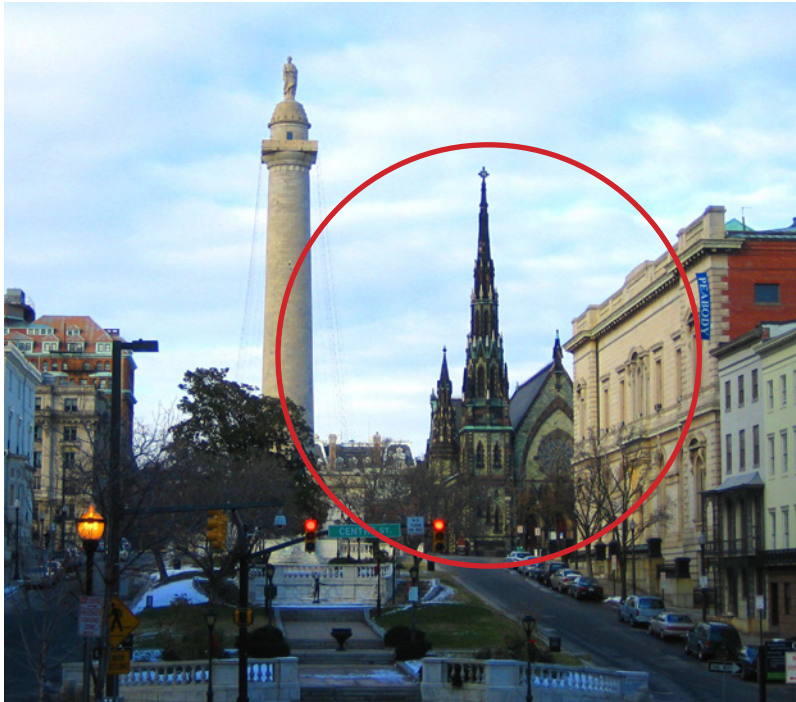
**Destiny (Units/Acre): 10.3**

Total acre:62

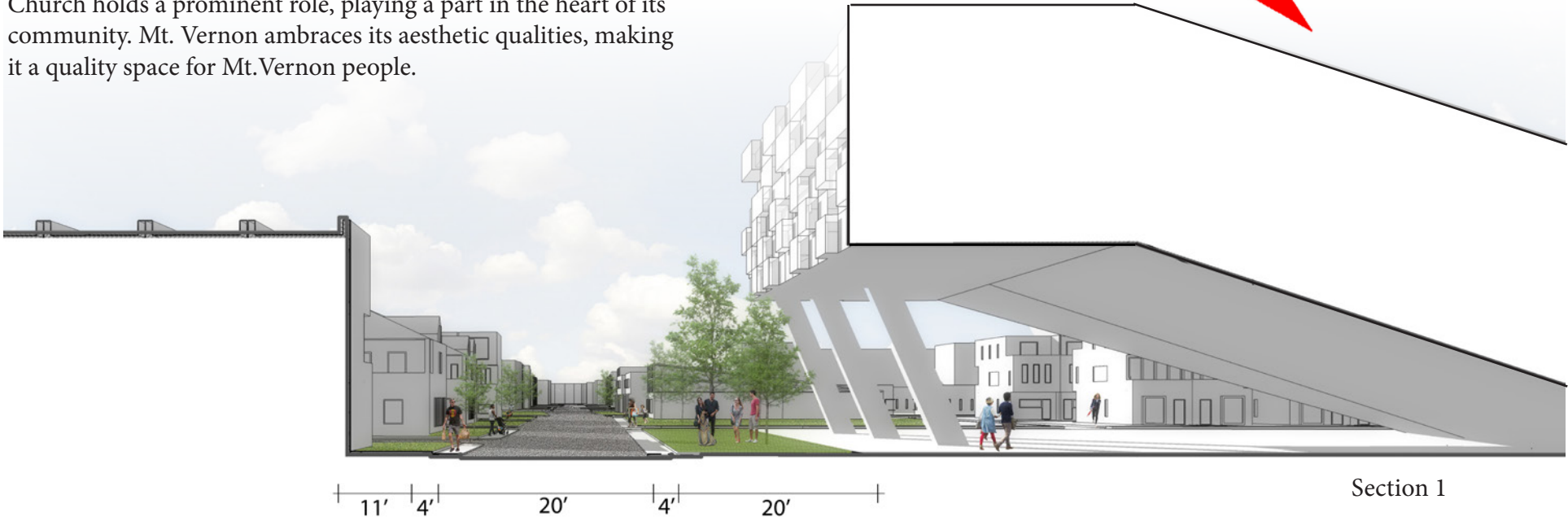
Public open space (acres): 6

commercial space (SF): 68,494 SF

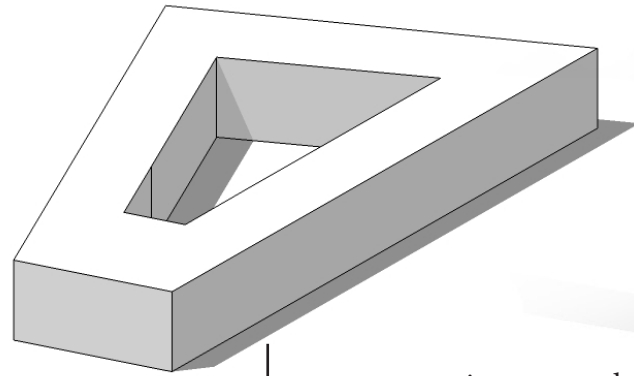




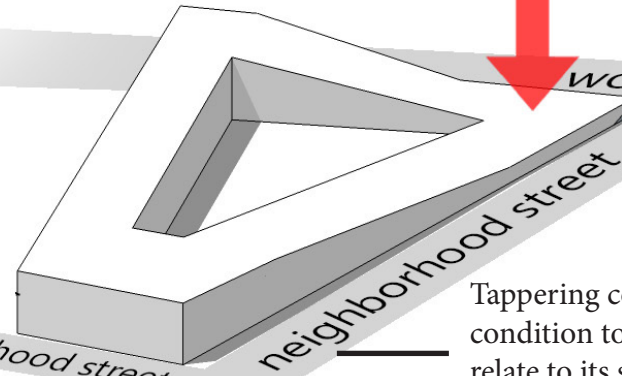
Above is a picture of Mt. Vernon square in Baltimore. Like many of Baltimore's communities, Mount Vernon's United Methodist Church holds a prominent role, playing a part in the heart of its community. Mt. Vernon embraces its aesthetic qualities, making it a quality space for Mt. Vernon people.



# Contextual Studies



generic courtyard apartment complex



Tapering corner brings edge condition to a scale that may relate to its surrounding height conditions. Inside units get views towards the park. The ground floor is also open to civic and commercial spaces.

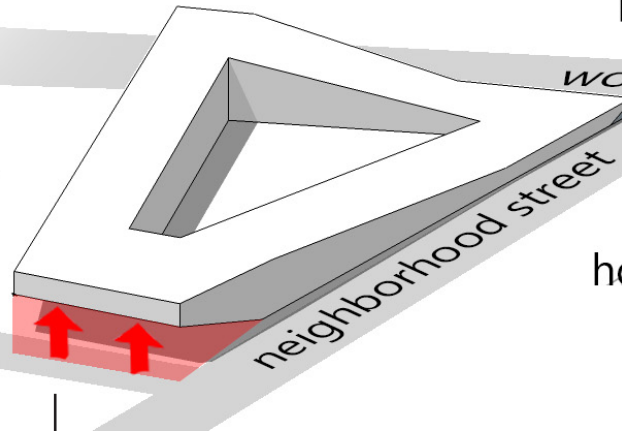
park

woodland ave.

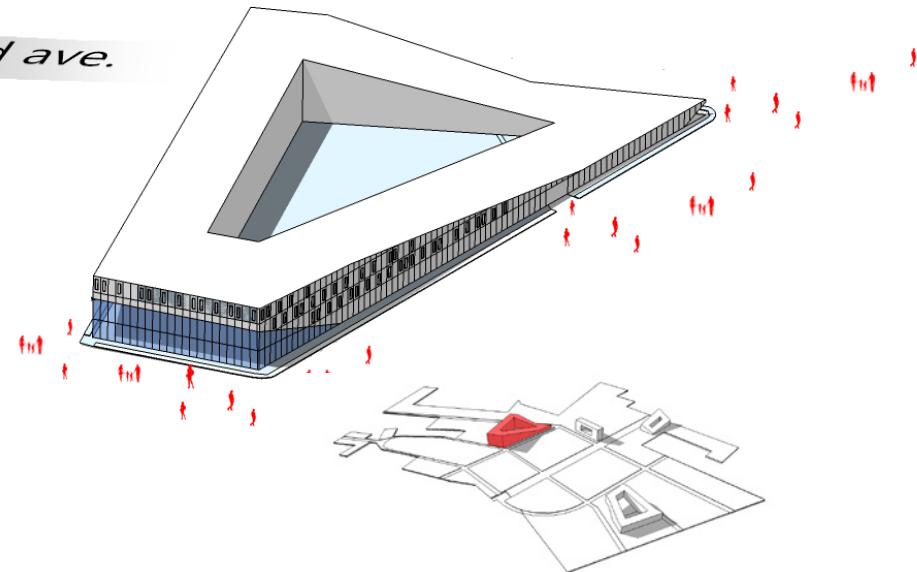
housing

housing

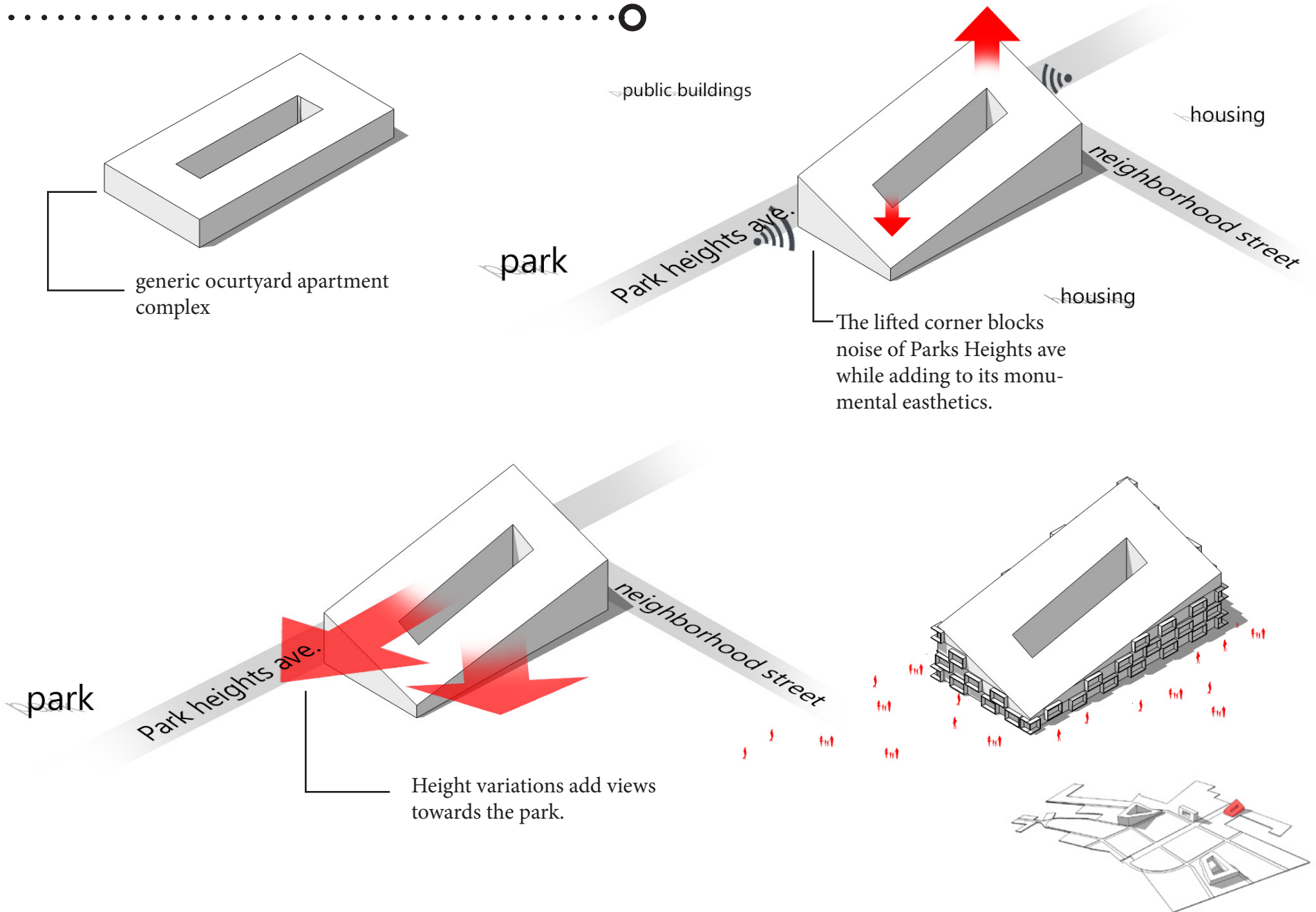
housing



The community shopping market sits on the ground floor of the mixed use complex, facing the heart of the neighborhood.

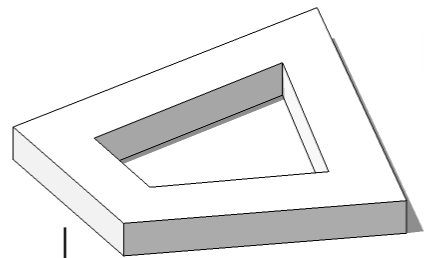


# Contextual Studies

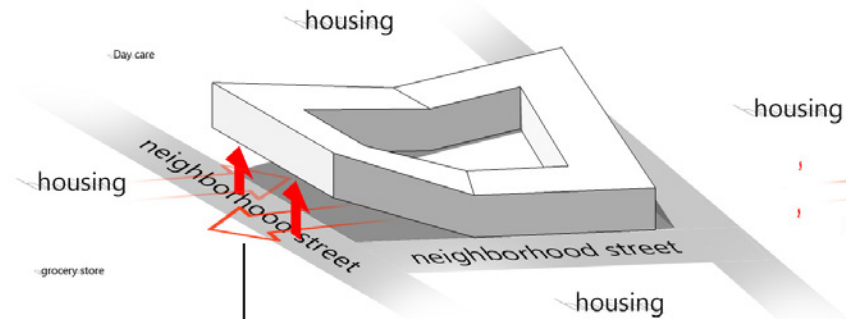




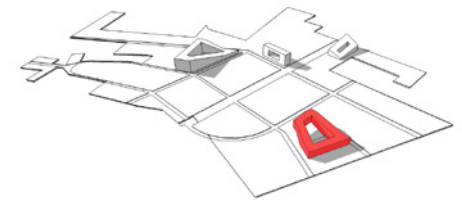
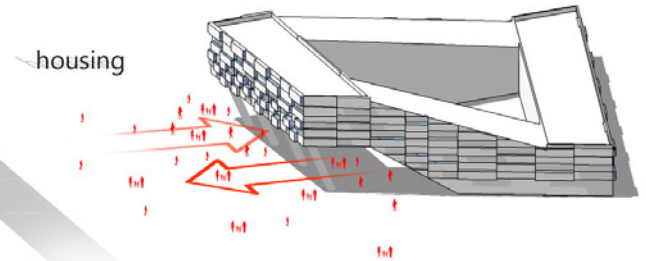
# Contextual Studies



generic courtyard apartment complex



The apartment complex is lifted to emphasize its connectivity to its surrounding community. The apartment edge will no longer act as in edge condition.



## Section

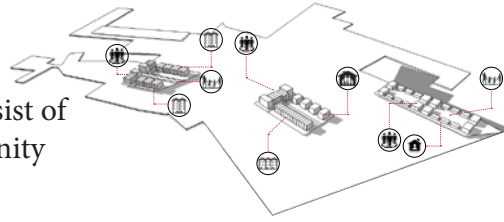


30' 4' 8' 1' 10' 10' 4' 10' 10' 1' 8' 4' 14'

Section 2

# Block Types

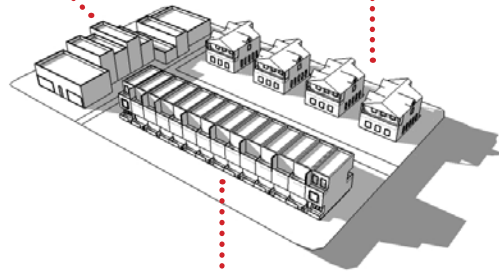
The new urban block typologies consist of various unit types mixed for community diversity



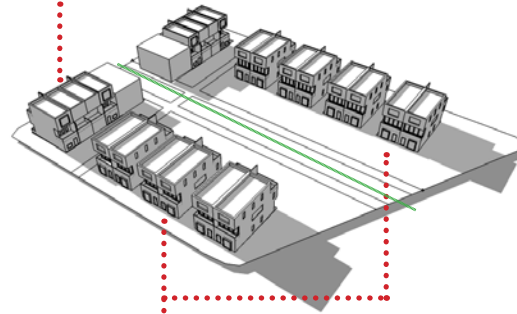
civic/commercial units

Single family

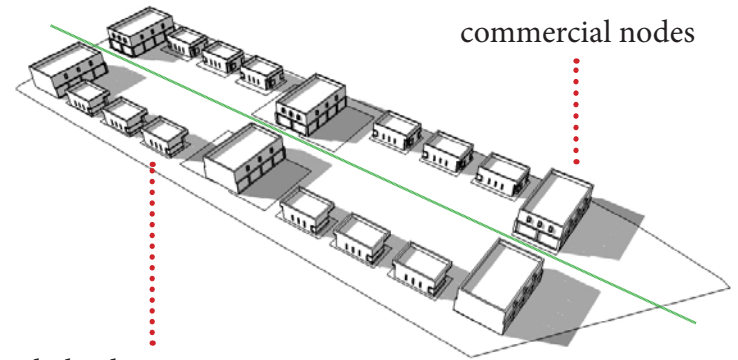
commercial civic units



rowhome



duplex

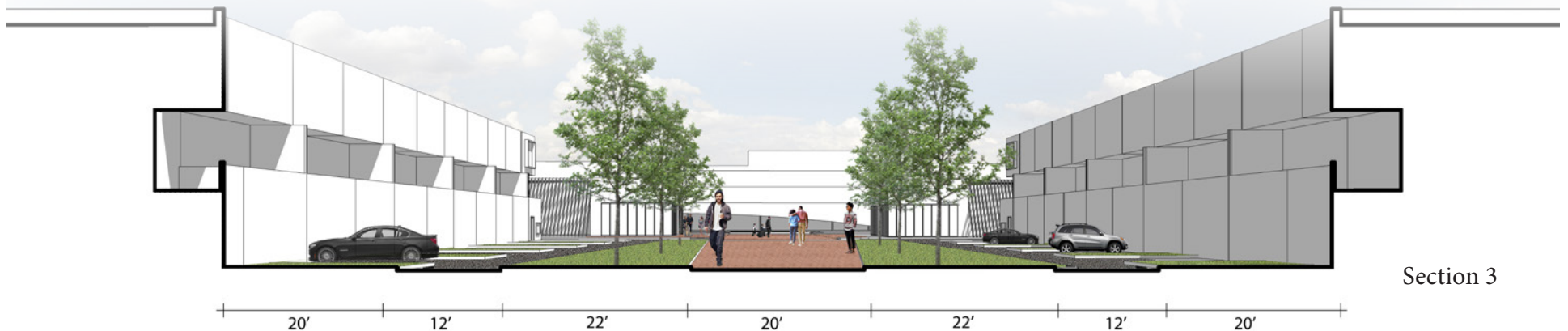


hybrid unit- micro units on green walk

commercial nodes

pedestrian path

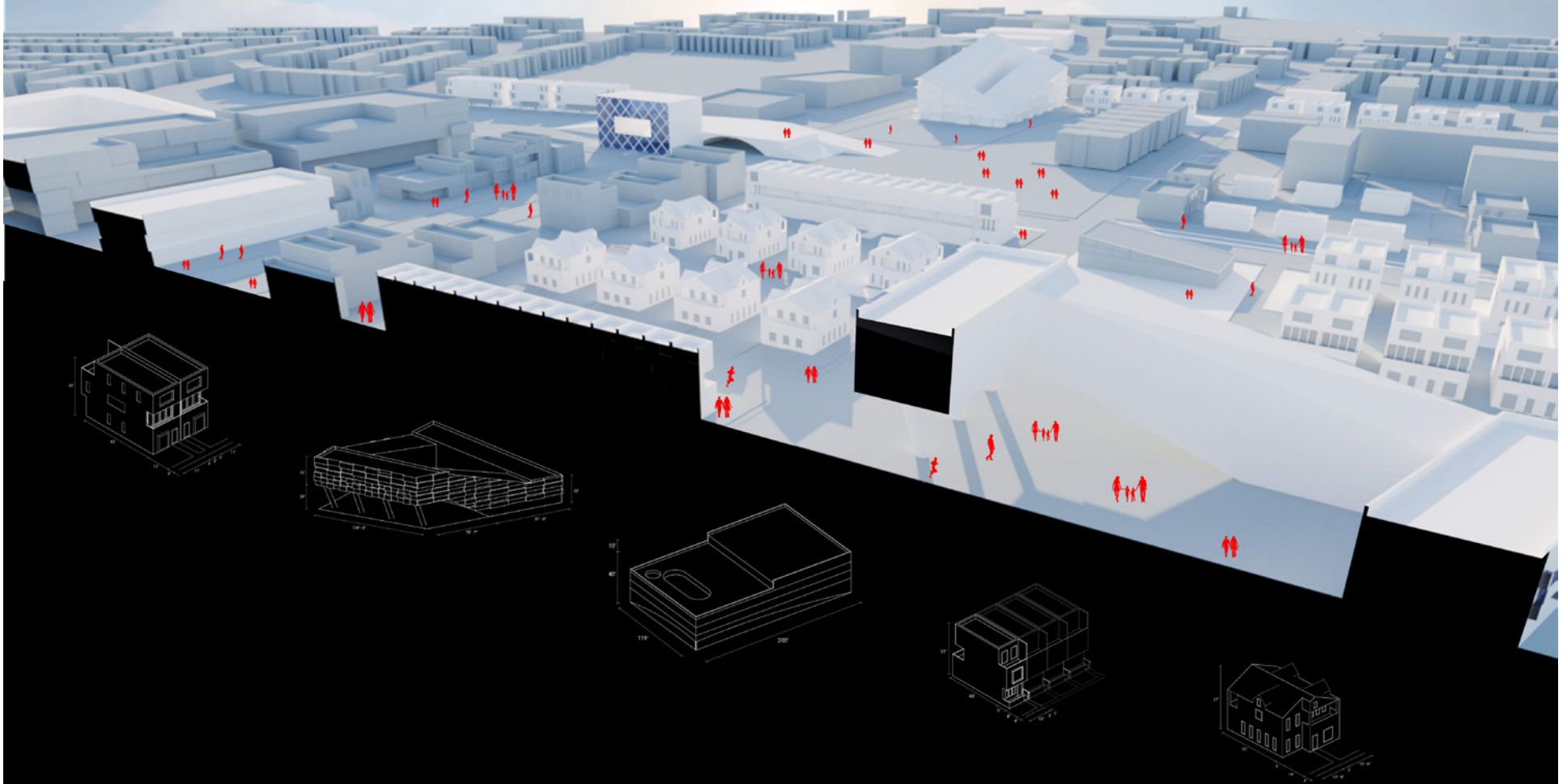
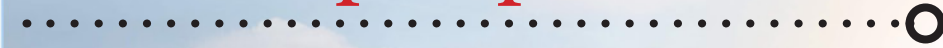
## Section



Section 3



# Section perspective



# Unit Typologies







View of the West neighborhood



.....○

# Perspectives





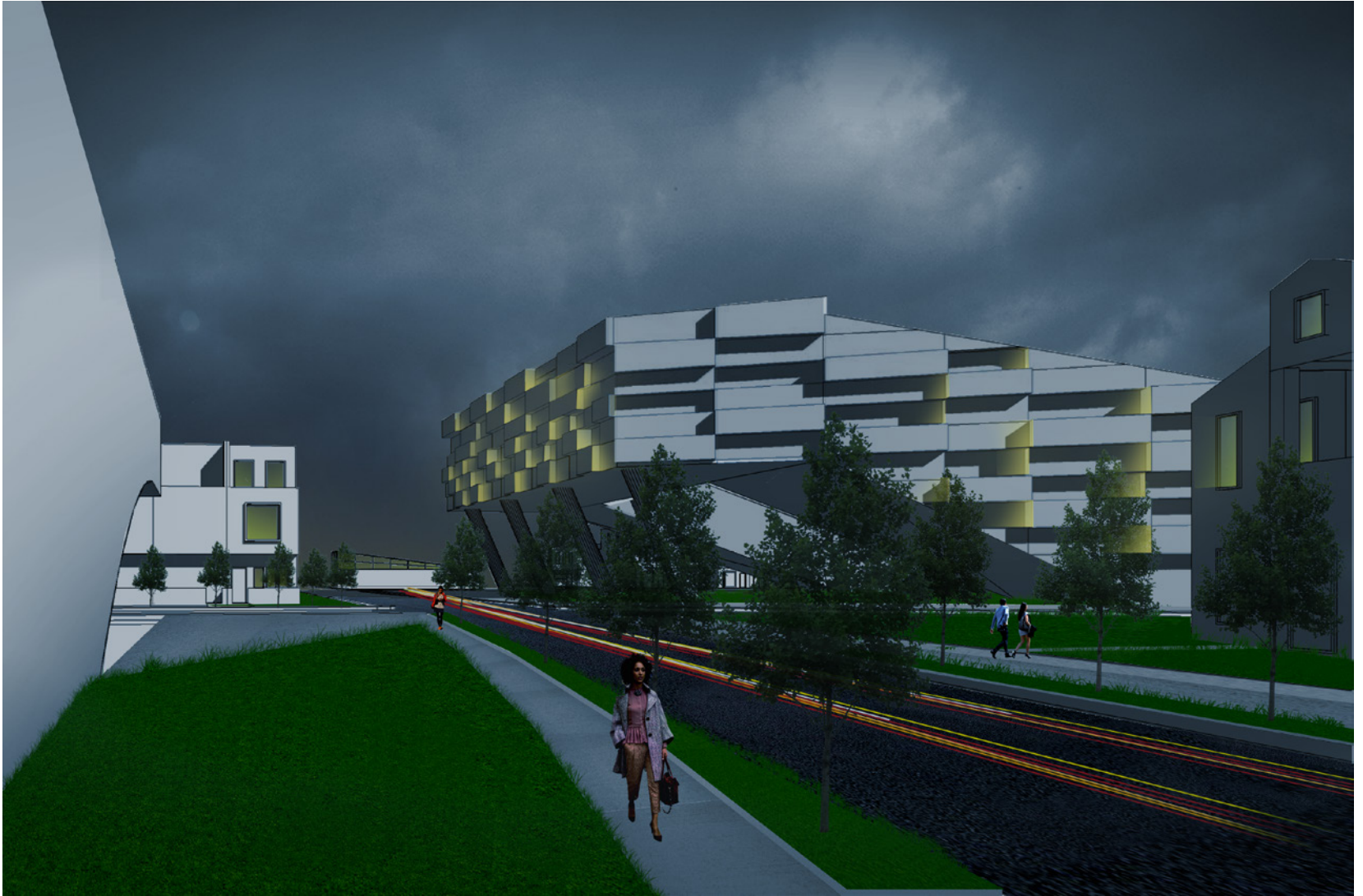
View of Park heights ave.



# Perspectives







View of the East side Apartments

.....○

# Perspectives







View of the Park

.....○

# Perspectives







.....○

# Aerial Rendering