

paper island
maintaining an atmosphere

copenhagen, denmark
undergraduate submission
studio project
fall 2015

Christiansholm, or Paper Island, dates back to 1695. The harbor island, which was originally used for docking and shipping, has had many roles within the urban context; ranging from military storage to storage for a paper mill.

Although this island has had many phases throughout its history, it was not until 2013 that it became known as the site for Copenhagen's Street Food, a vibrant collective of food trucks

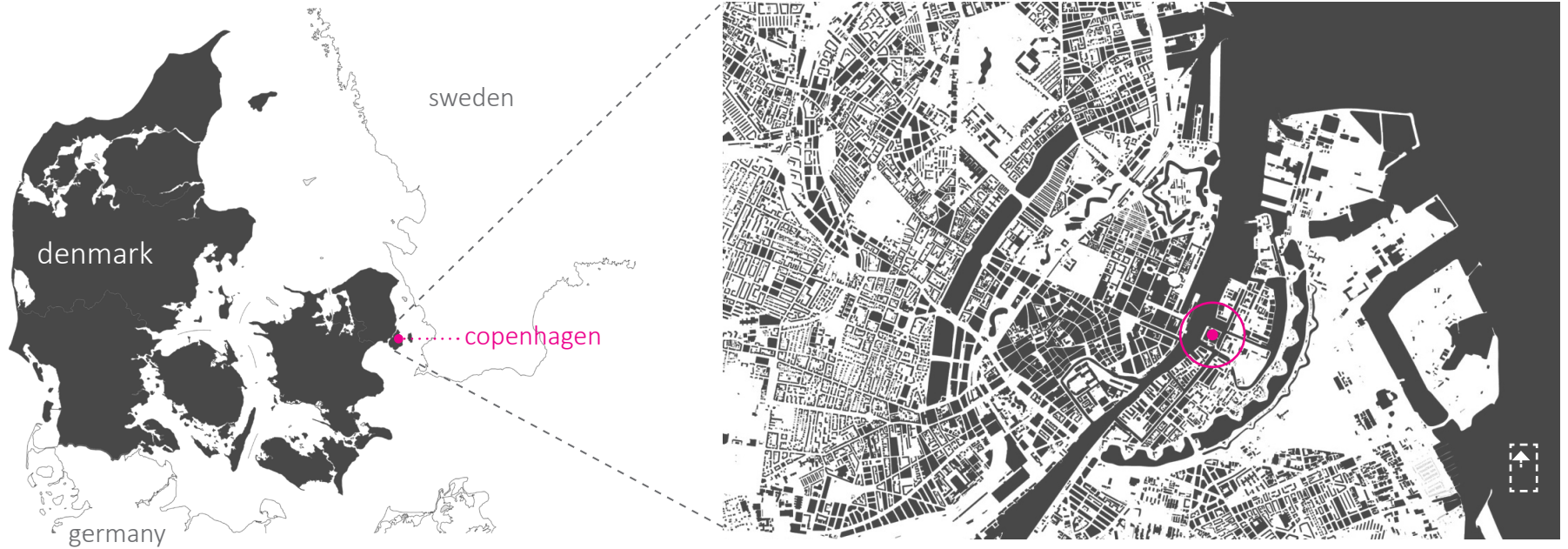
and various cultural activities.

The goal of this urban design project is to re-develop the island into a new cultural hub that contains a significant mixture of retail, office, and residential as well as enough flexible space for various events, while maintaining the cultural influence that exists today. In the future, Paper Island is going to be a fully integrated part of Copenhagen with a mix of housing, offices, and public amenities.



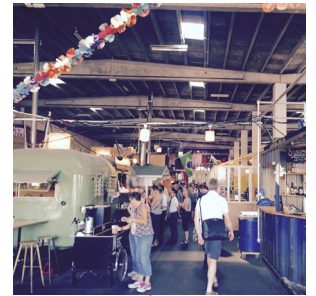
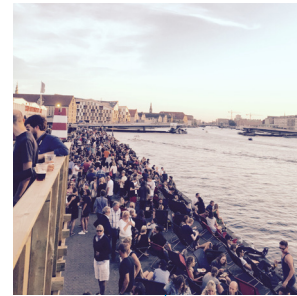
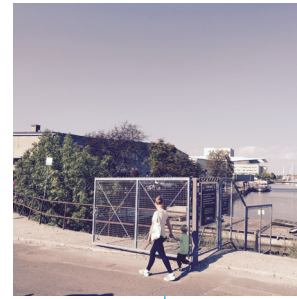
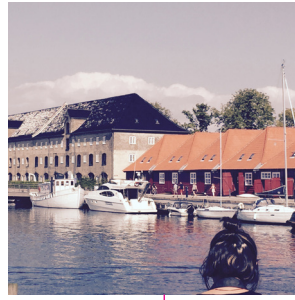
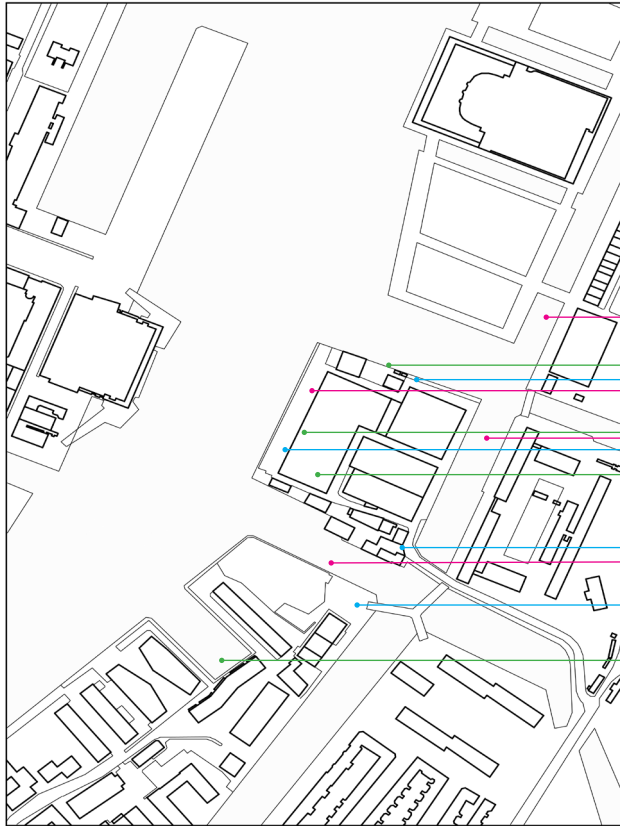
00

context
copenhagen, denmark



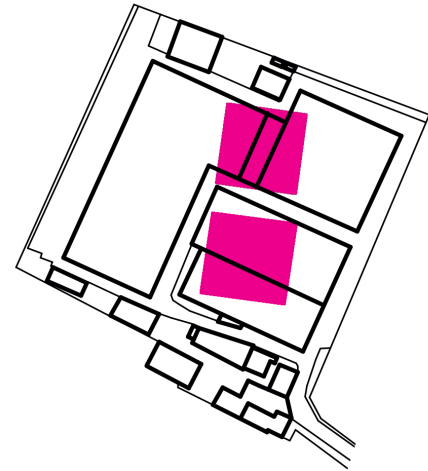
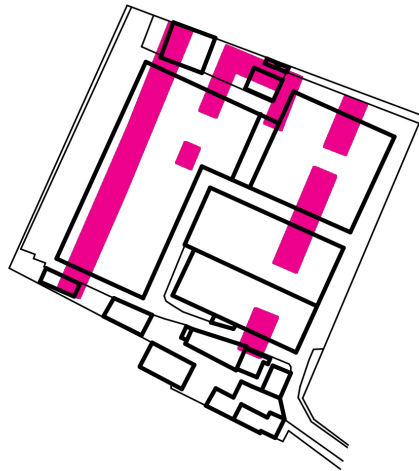
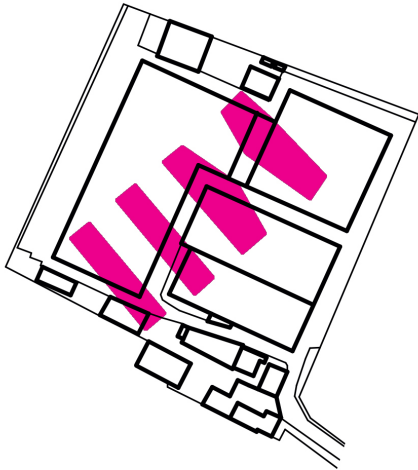
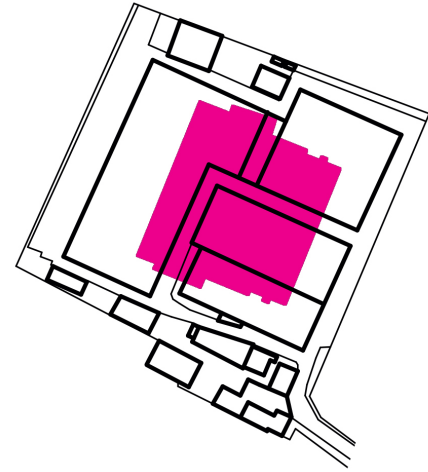
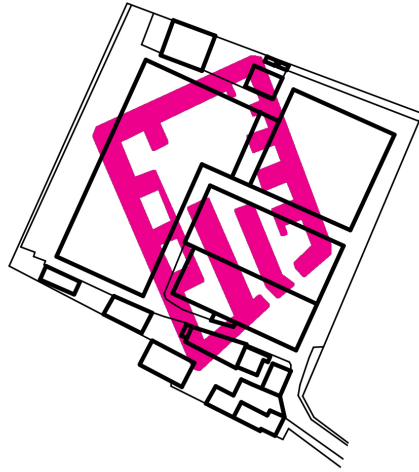
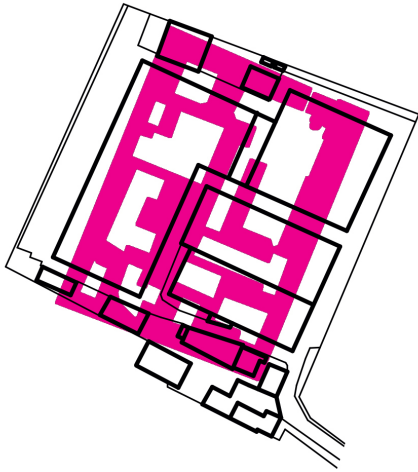
00

context
identity of paper island



00

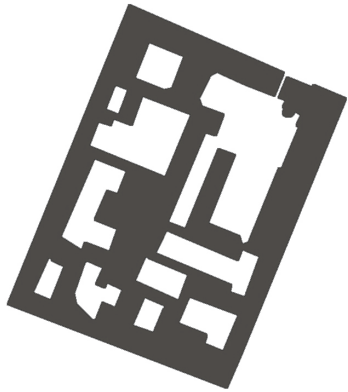
context
compare surrounding block scales



00

context

combine various housing typologies



fine urban grain housing



+



larger unit complexes

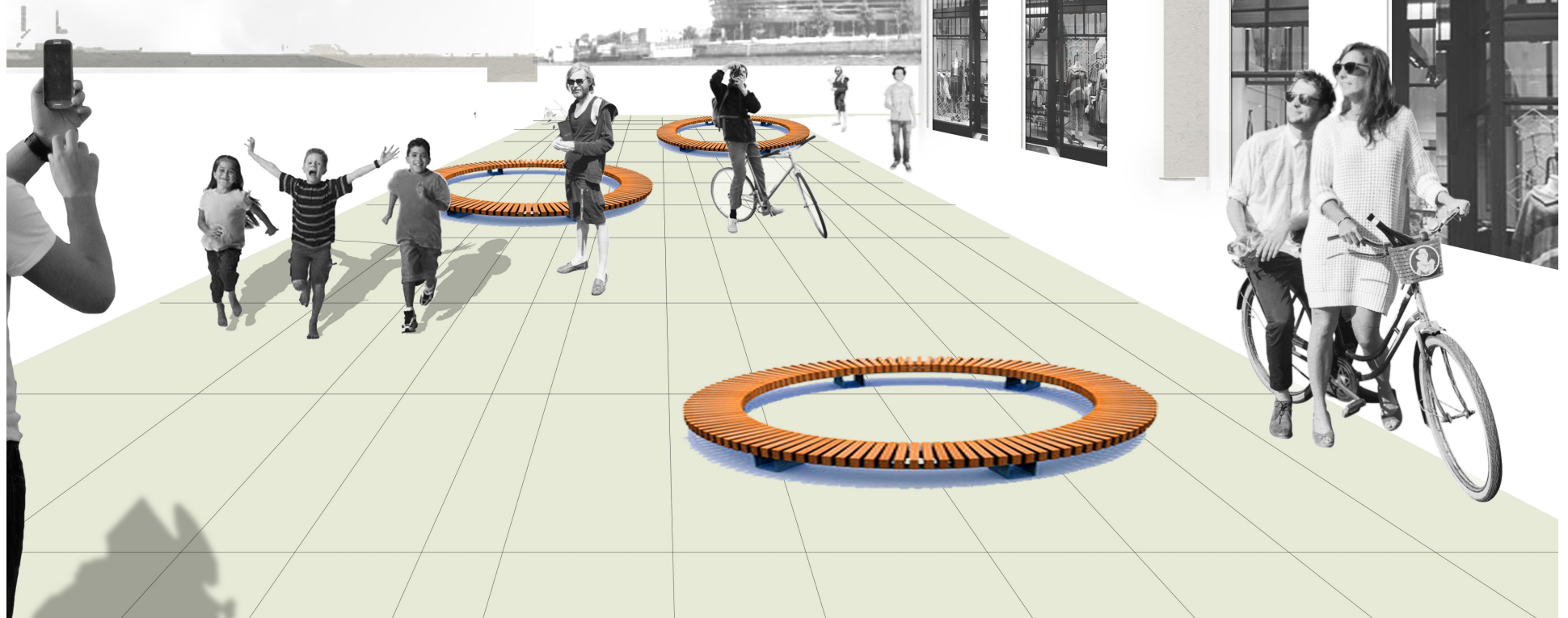


01

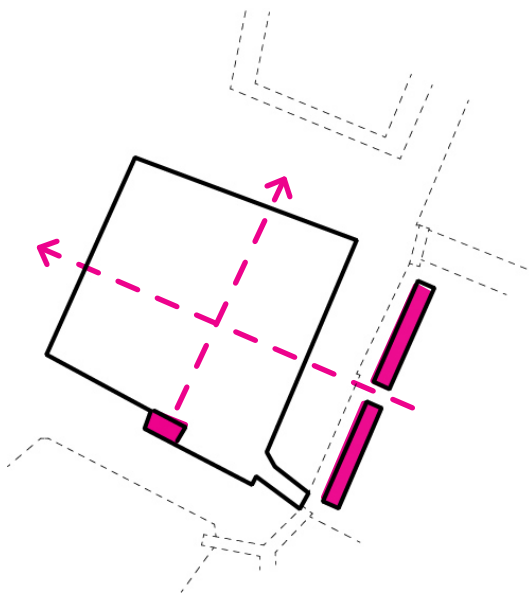
paper island development *food market entrances*

With a central location in the city, Christiansholm, or Paper Island, is a prime location for a hub of cultural activity and residential density. This design proposes a mixture of both programs; intermingling public and private spaces, while paying close attention to the semi-public and semi-private layers in between.

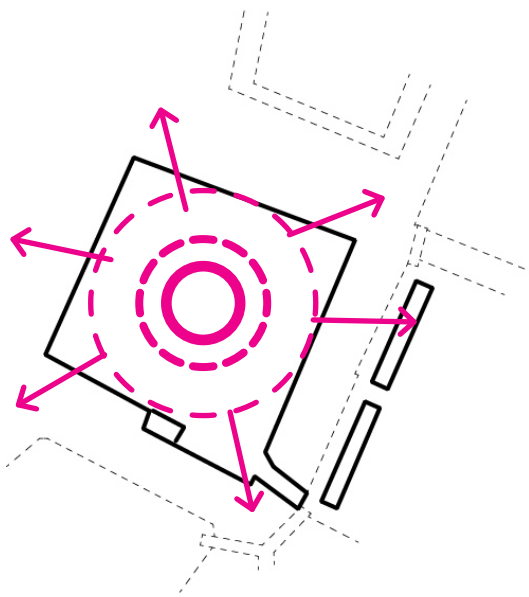
The project aims to maintain the vibrant culture that currently exists while proposing a residentially dense addition. This design uses 3 main concepts: axis, grid, and view as a guide for the overall design and these foundations help to shape and form the proposal.



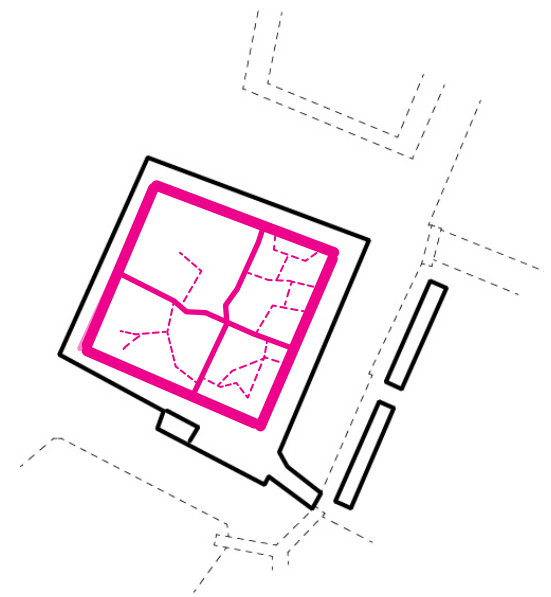
1 Axis as Foundation



2 Equal Views

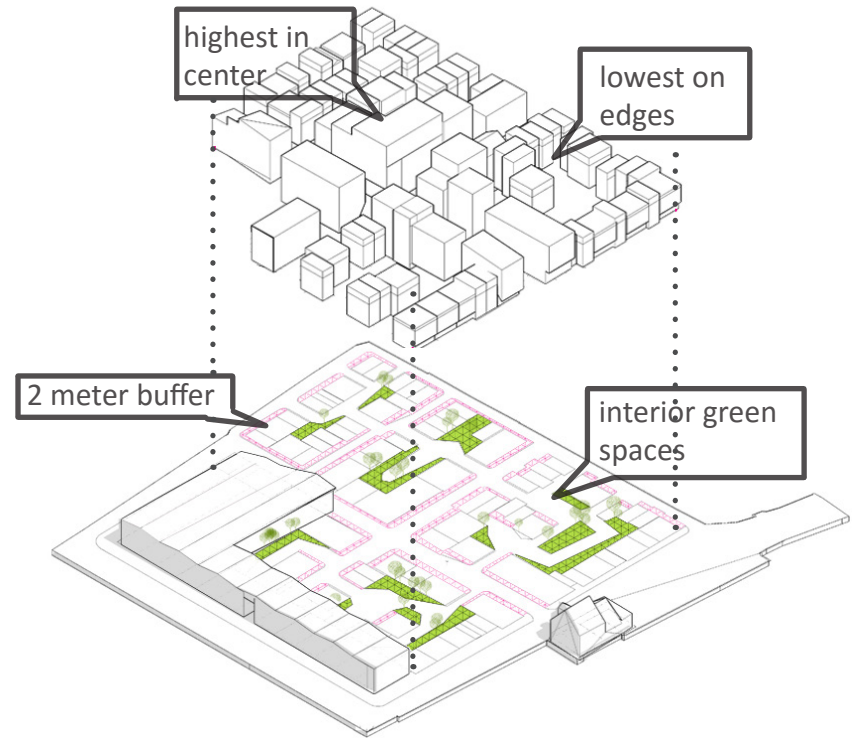
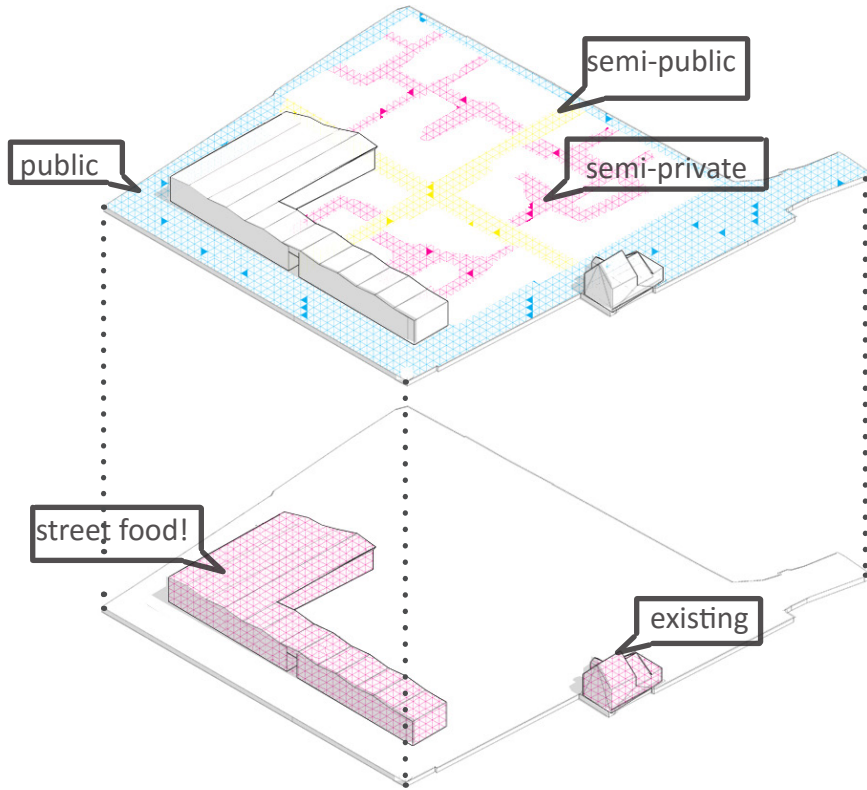


3 Grid Hierarchy



02

generative foundation massing + layers of space



Roof Terraces

Occupiable roof terraces allow residents access to great views of the harbour and can be used as community gardens or amenity spaces.

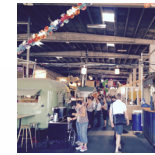
CPH Street Food

Copenhagen Street Food acts as the main community + public amenity on the island; attracting Copenhageners from all over the city.

Retail + Flex

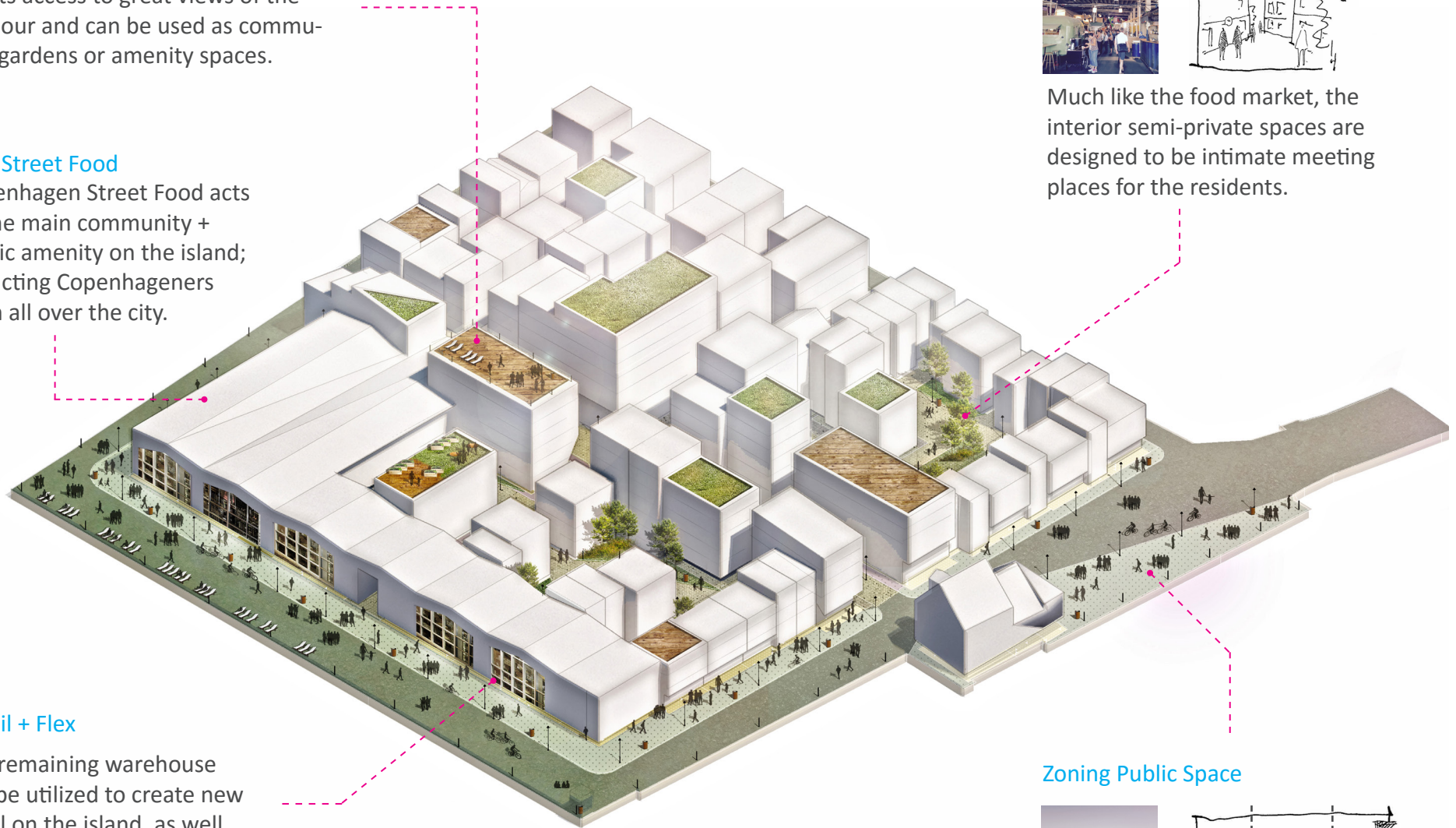
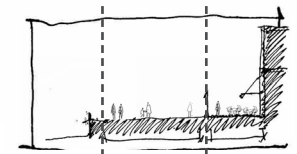
The remaining warehouse will be utilized to create new retail on the island, as well as flex spaces for events and meetings.

Small Intimate Spaces



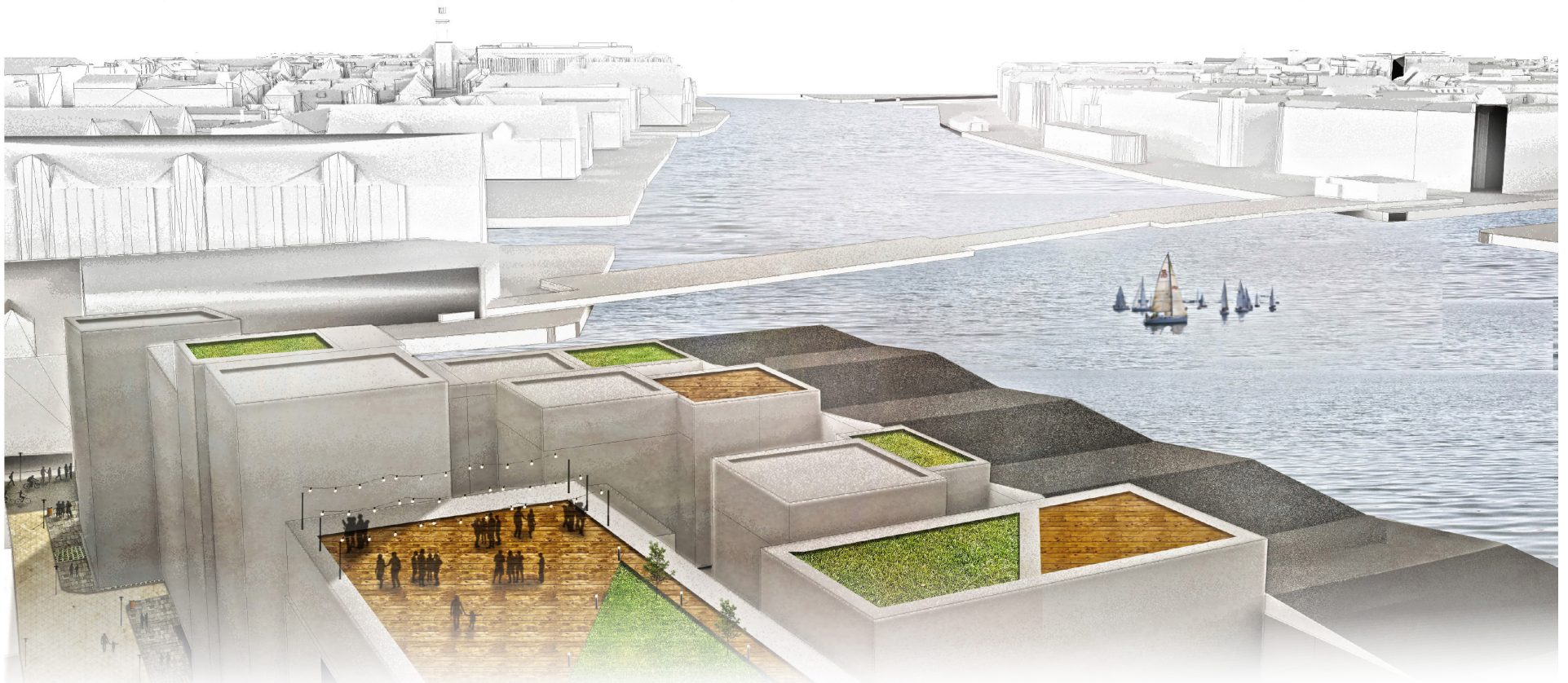
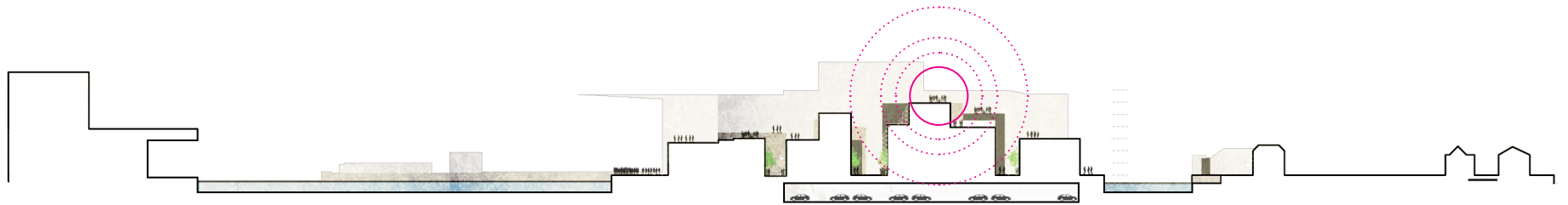
Much like the food market, the interior semi-private spaces are designed to be intimate meeting places for the residents.

Zoning Public Space



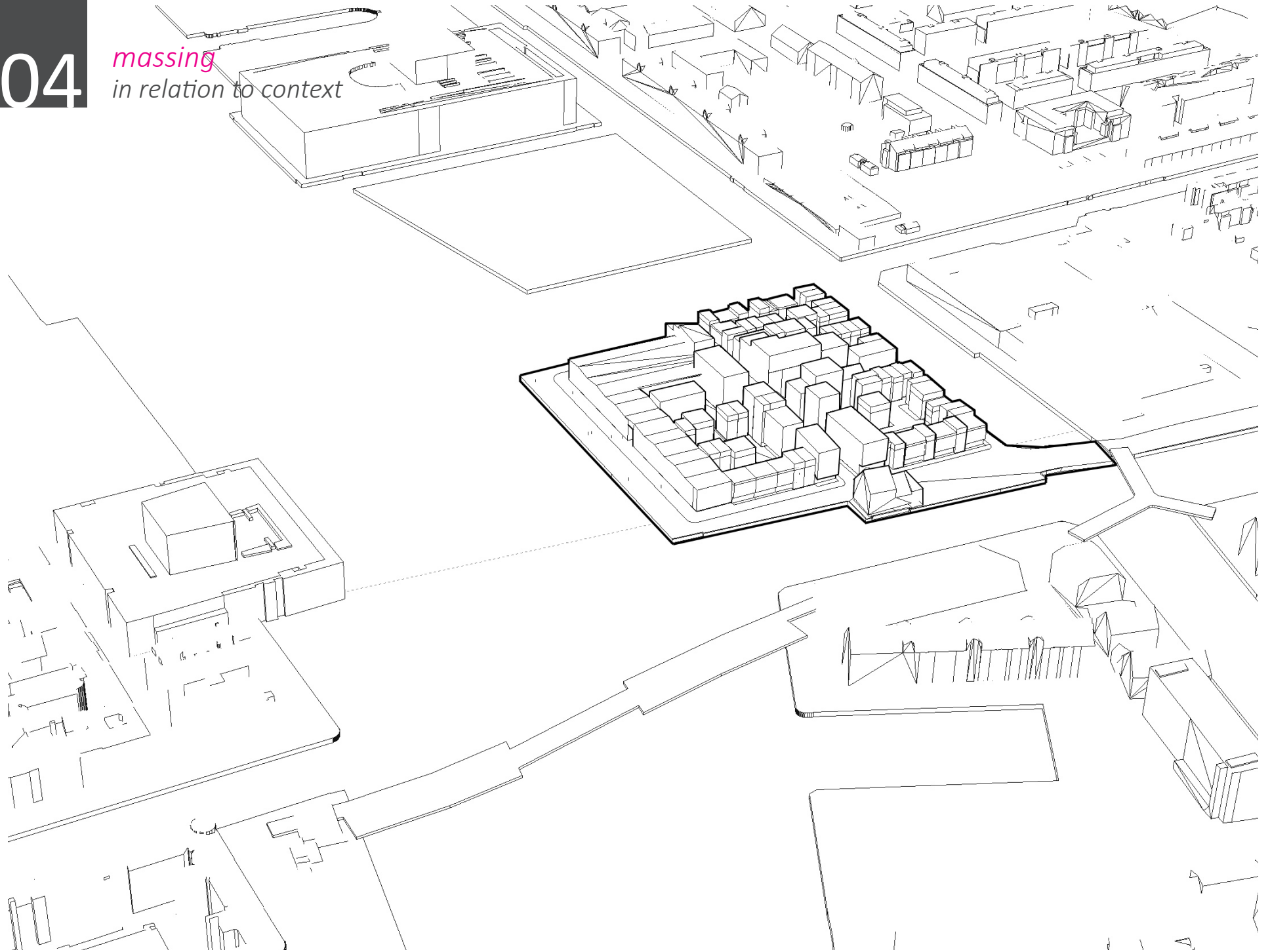
03

perspective
rooftop terrace harbor view



04

massing
in relation to context



05

perspective
interior residential street



