

BALTIMORE'S *MOVEMENT MAKER*



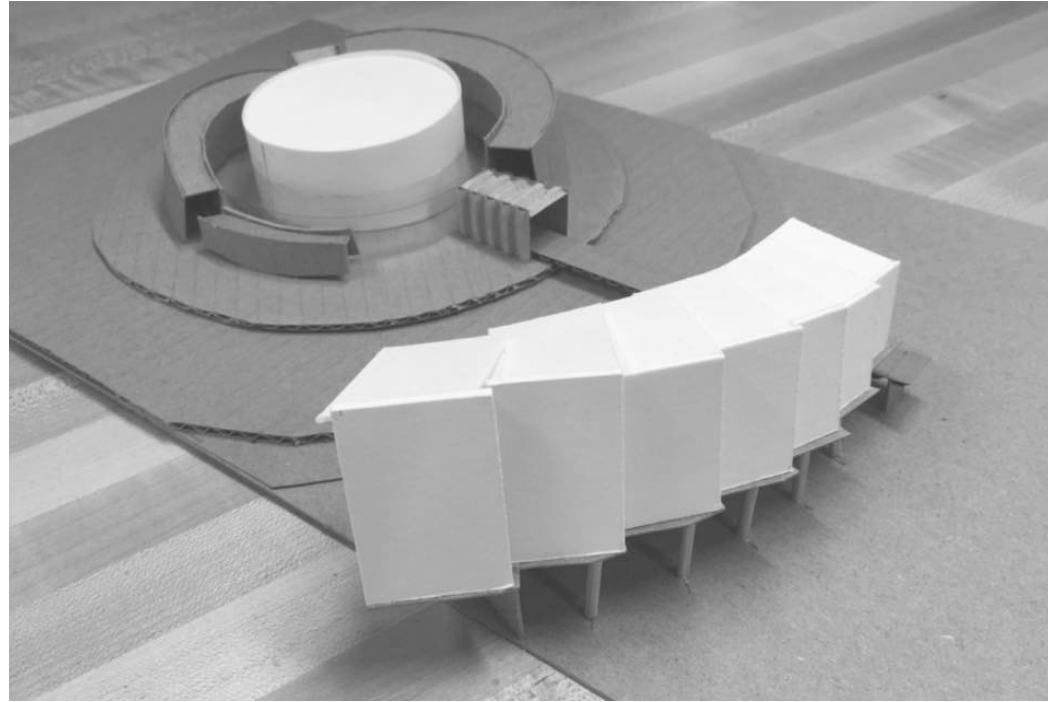
UNDERGRADUATE SUBMISSION - STUDIO PROJECT

LAZARETTO POINT | BALTIMORE | MARYLAND | UNITED STATES

Lazaretto Point is a unique space in Baltimore because it is the destination and the connector that ties the harbor's boundary. The site itself is marked with scars from industry throughout time- the Lehigh Cement Silos, I-95 Tunnel below, and Coal Shipment Facility to the east. The master plan describes an approach to healing the land from these scars, as well as healing the users of the space with park design for movement. Gateway Park incorporates the Harbor Line which is a raised boardwalk that links this destination to newly redeveloped piers and Canton Park to the north.

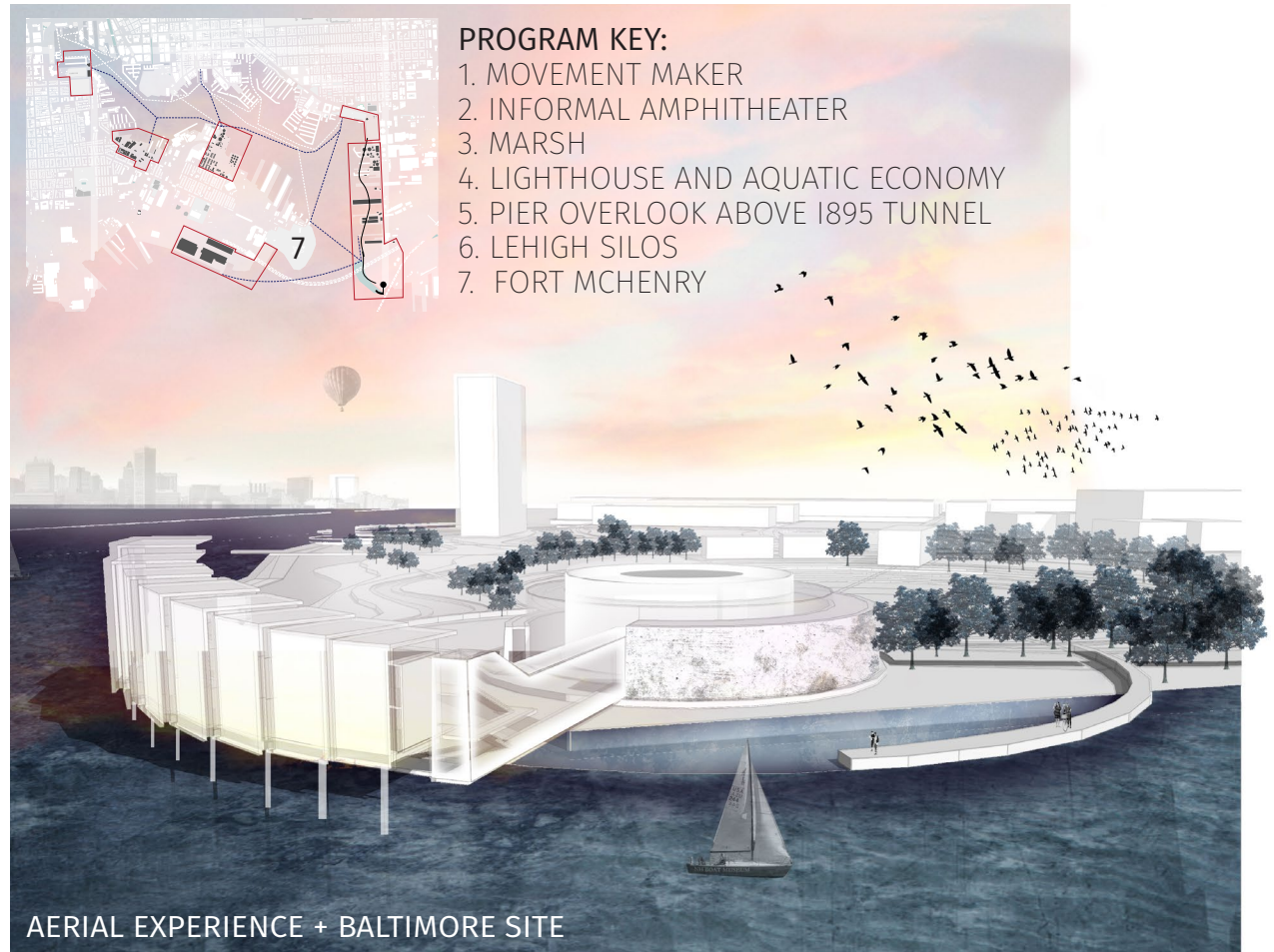
The Movement Maker is placed on Lazaretto's point. The idea of healing and movement continues with the program of this building, becoming a kinesthetic institute where movement is created and displayed. The nature of the program influences the form to become three distinct forms- the Exhibition Core being grounded on the land, Threshold Bridge, and the Movement Maker projecting onto the harbor and housing dance studios and learning spaces. The form for both of these primary objects takes inspiration from freeze frame images of dancers, where the motion is described in means of gravity. The parabolic spacing between moves carries through the building where the spacing between parts embodies both fast and slow forces.

CONCEPTS



freeze frames

conceptual form model



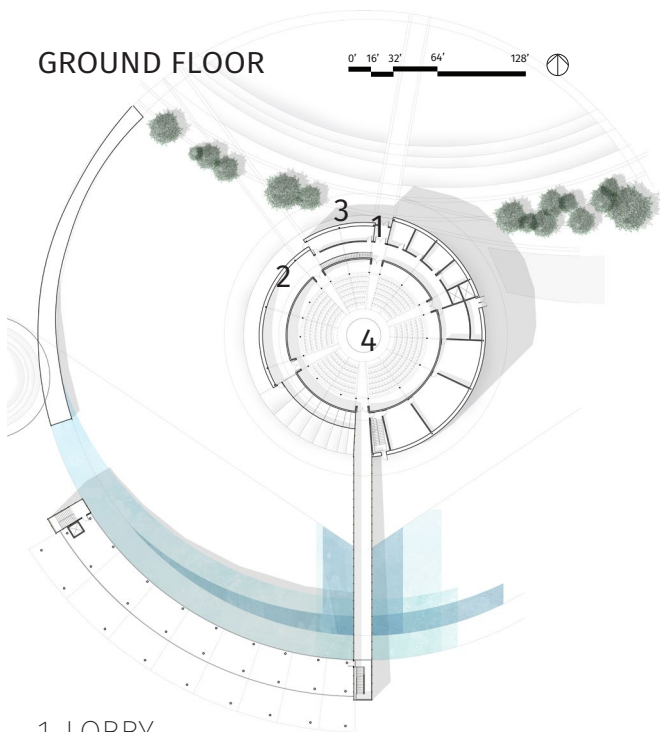


BIRDS EYE + PROCESS



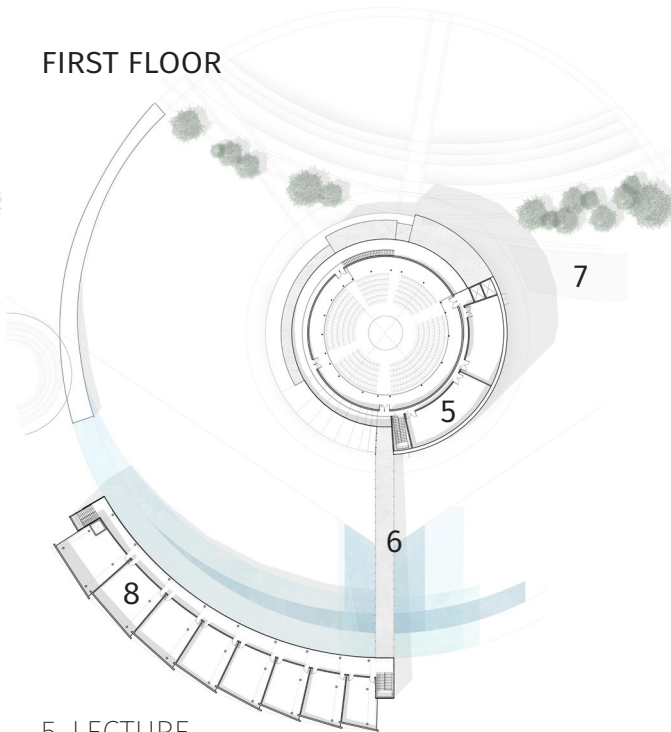
PARK EXPERIENCE

GROUND FLOOR



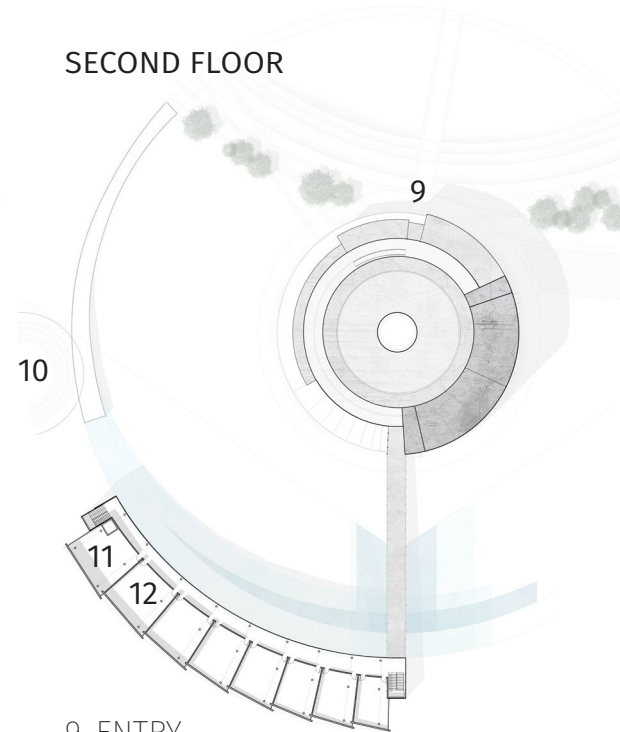
- 1. LOBBY
- 2. CAFE
- 3. RETAIL
- 4. EXHIBITION

FIRST FLOOR



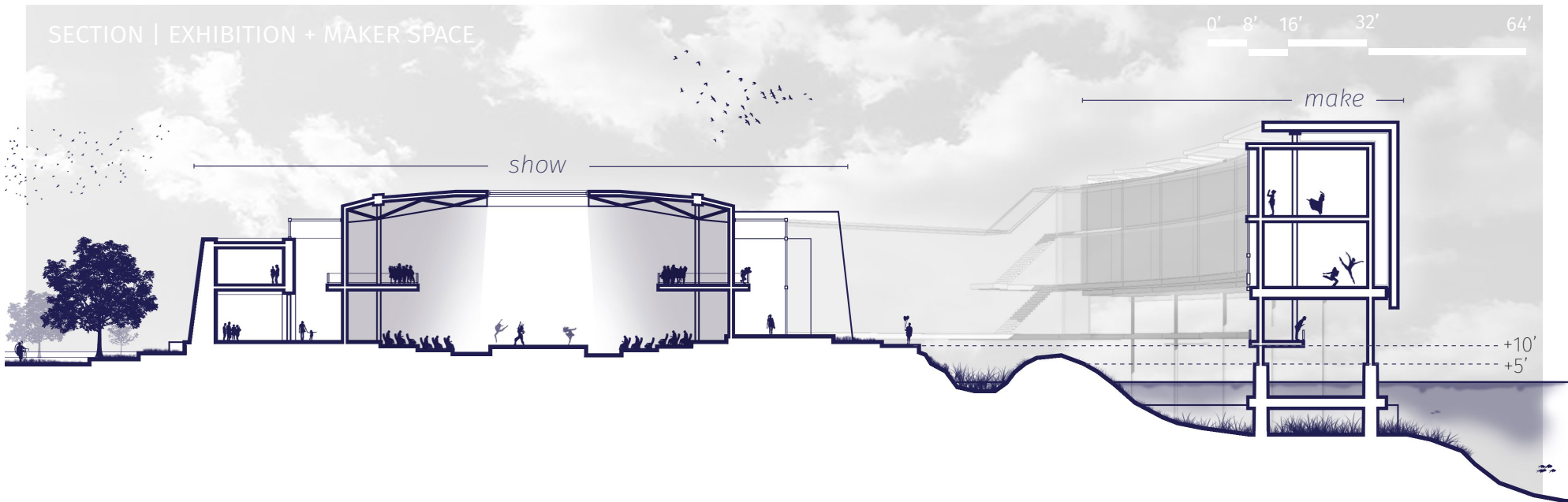
- 5. LECTURE
- 6. BRIDGE
- 7. PARKING
- 8. MAKER SPACE

SECOND FLOOR

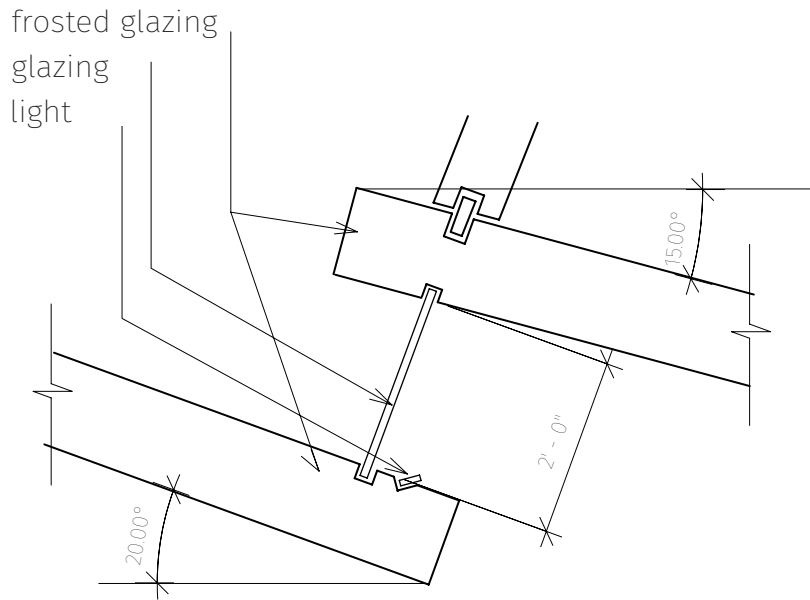


- 9. ENTRY
- 10. AMPITHEATER
- 11. LIBRARY
- 12. CLASSROOM

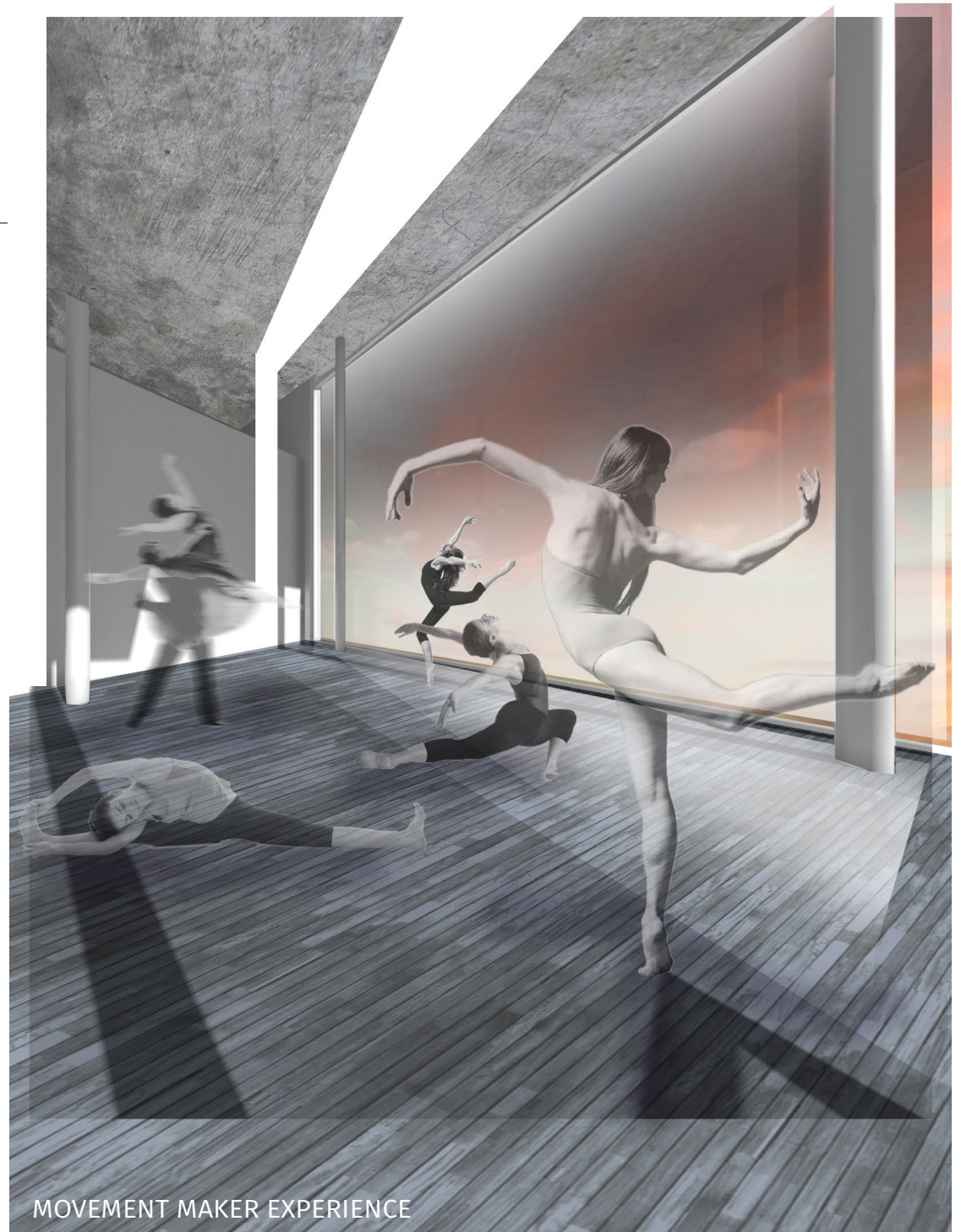
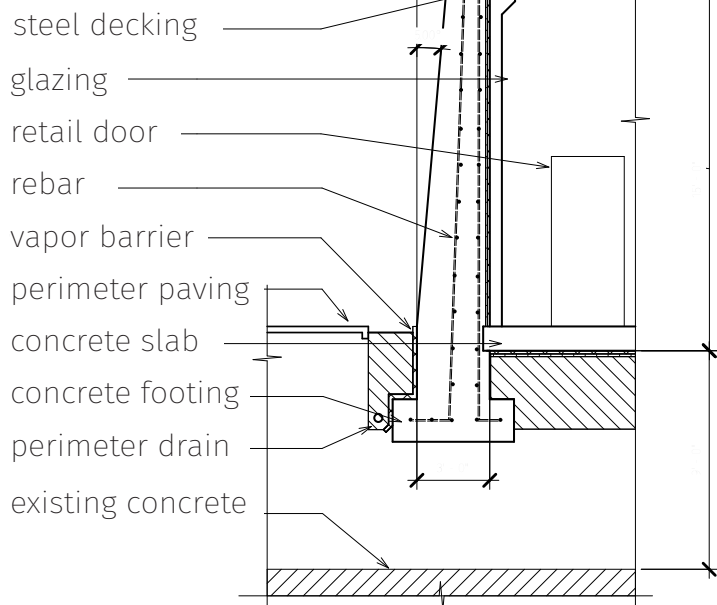
SECTION | EXHIBITION + MAKER SPACE

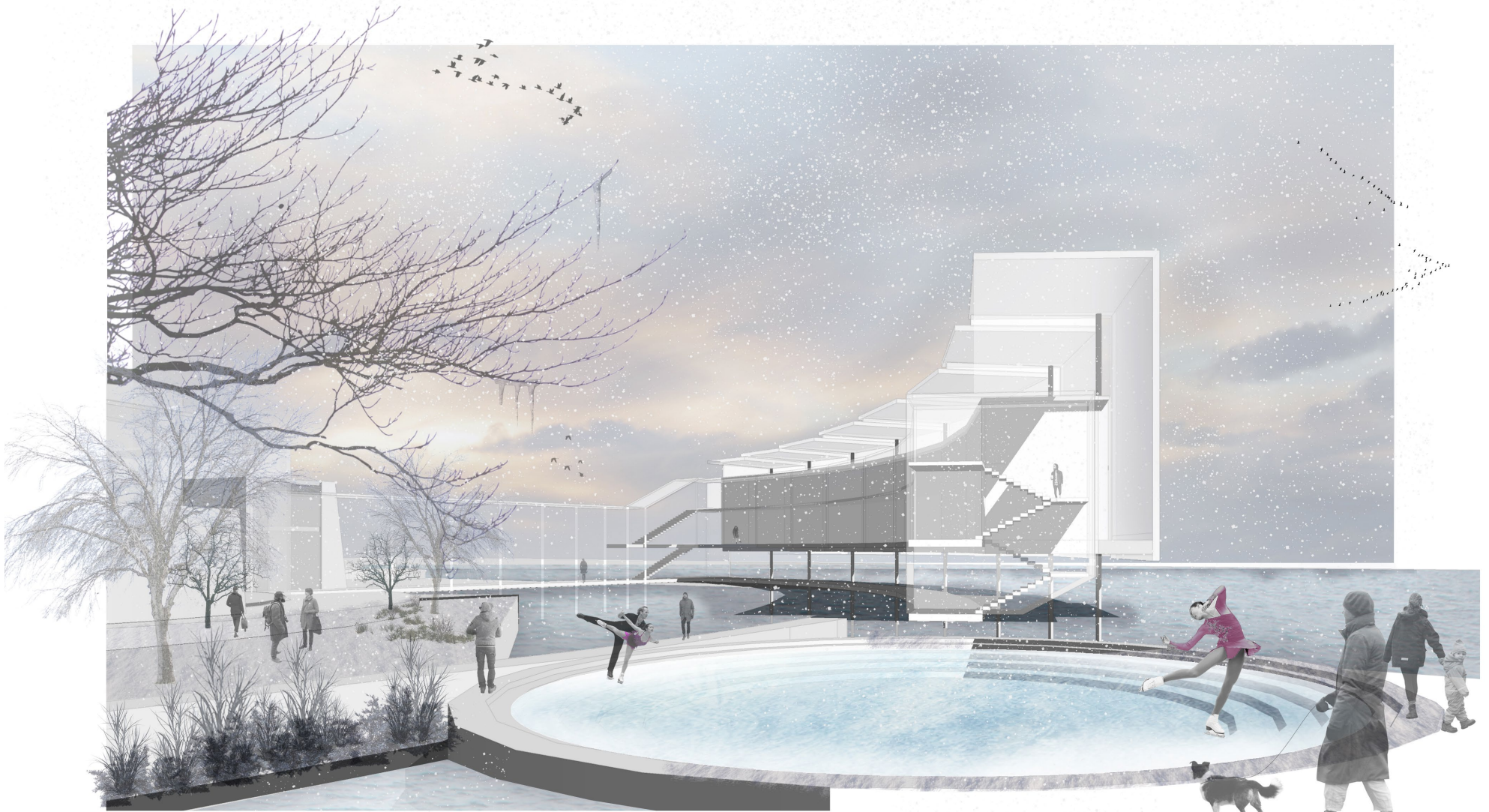


FACADE PLAN DETAIL



WALL DETAIL





AMPHITHEATER EXPERIENCE