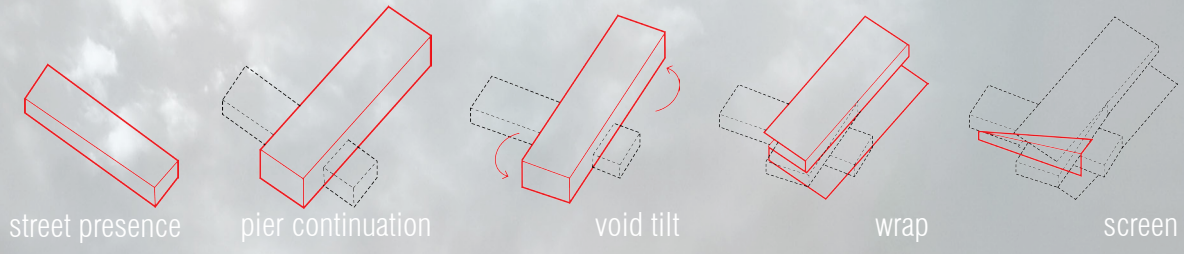


baltimore waterfront art institute: intrinsic L A Y E R S

Baltimore, Maryland

Undergraduate Submission

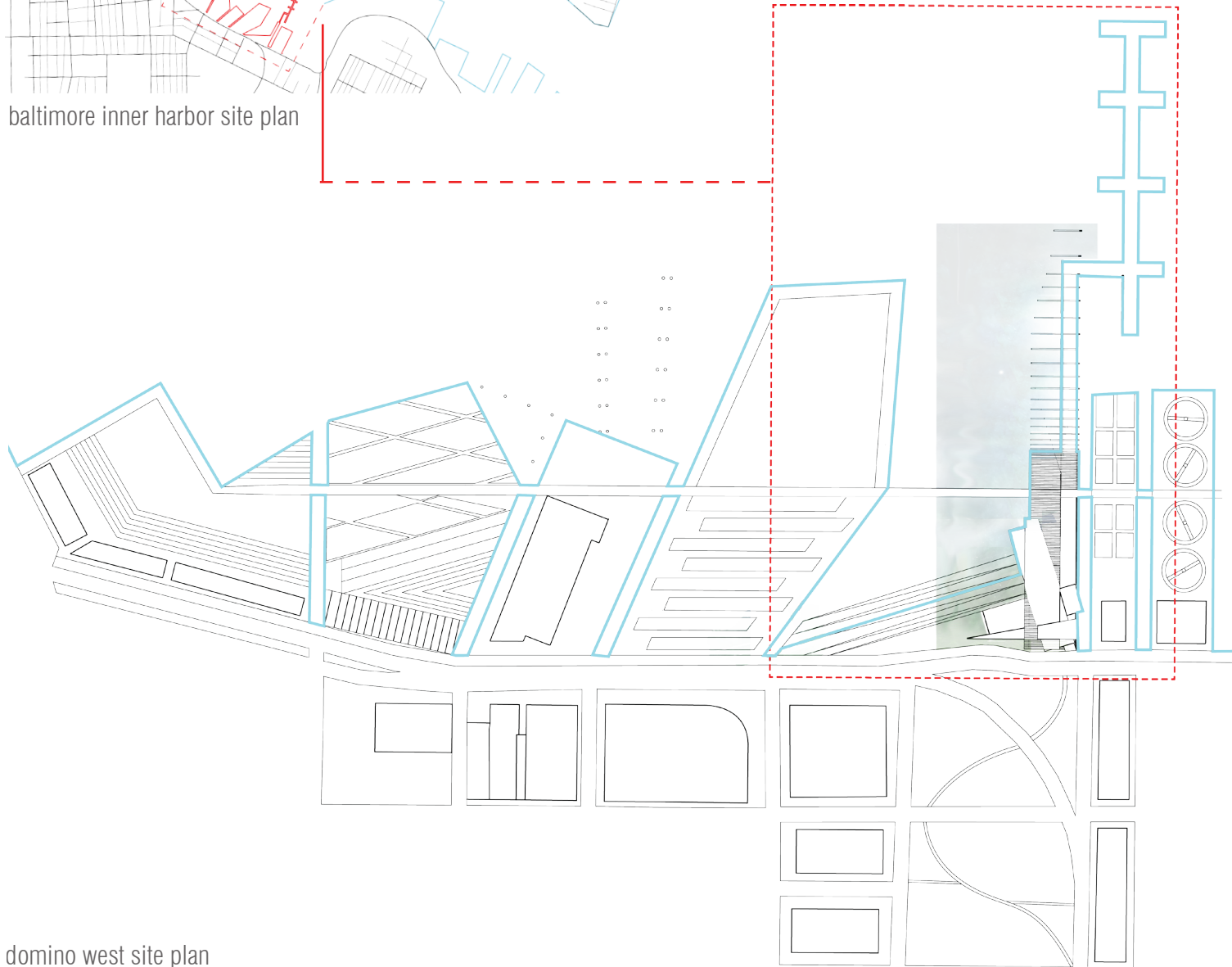
Intrinsic layers is a series of organic and dynamic spaces formed by components that overlap and intersect in order to provide a place of being for the Baltimore Waterfront Art Institute at Domino West. The waterfront masterplan for Domino West addresses the urgent need to link the neighborhood and water-edge through sustainable means while redefining Key Highway as a light threshold rather than a barrier. Such sustainable means include a series of bioswales and bio-channels that connect Domino West's unique street grid visually and physically to the water. This distinctive yet innate connection divides the water edge into programmatic zones that cater multiple community interests and create a transition from a commercial area deriving from Federal Hill to an industrial area leading to Domino Sugar Factory and others. The Baltimore Waterfront Art Institute is placed on a programmatic zone that creates presence both along and across Key Highway. The site is composed of green landscape, harbor water and an existing pier. Through a series of layers that grow and bleed from the site to its surroundings, biophilic designed spaces are formed to cater the creative individual of the area. All programmatic spaces of intrinsic layers, whether maker studios or lecture rooms, are sustainably constructed by thoughtfully chosen materials and systems that address the necessity for humans to be in touch with nature in all places: live, work and learn. Subsequently, the layers dictate both transformative and fixed spaces, as well as the movement of natural elements through the building such as light, water and plants. Intrinsic layers is therefore an ingenious product of biophilic concepts defined by materiality, space making and user experience.



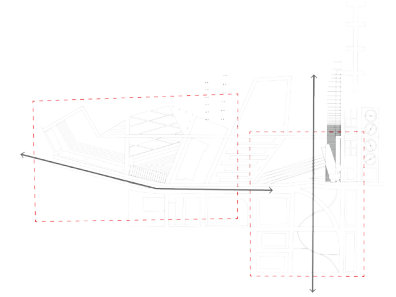
key highway perspective



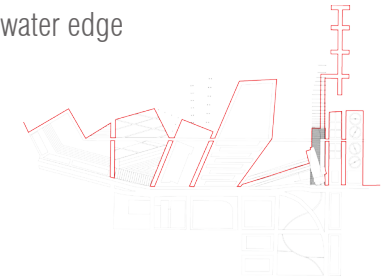
baltimore inner harbor site plan



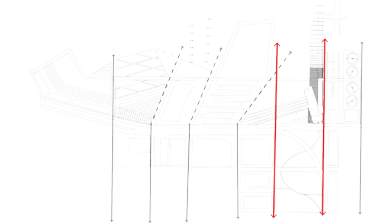
domino west site plan



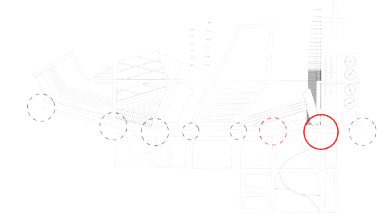
water edge



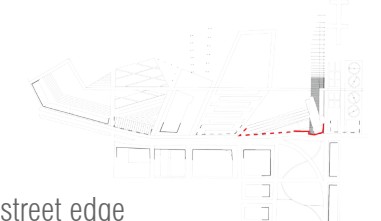
street v. park plaza



sustainable connections

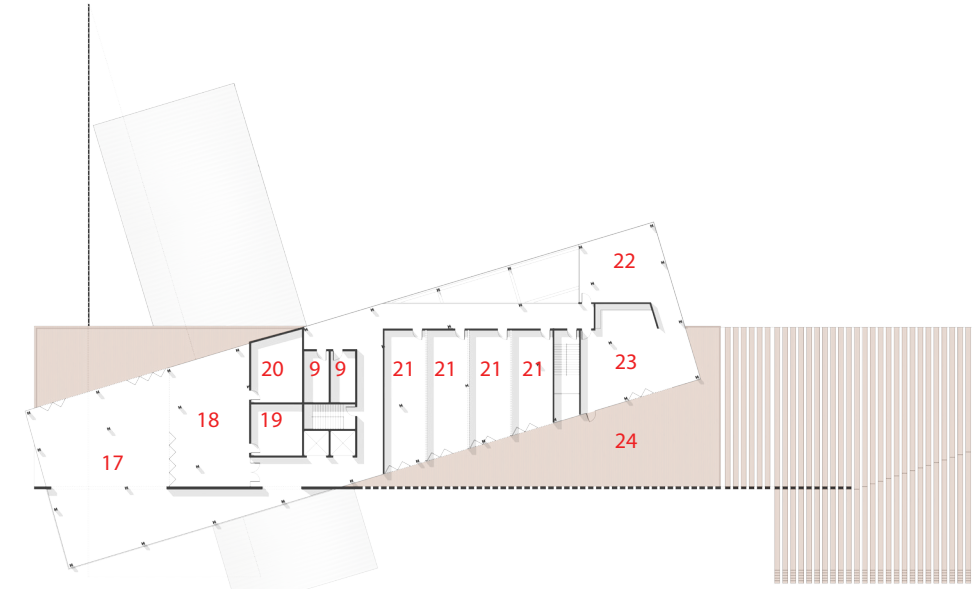


nodes

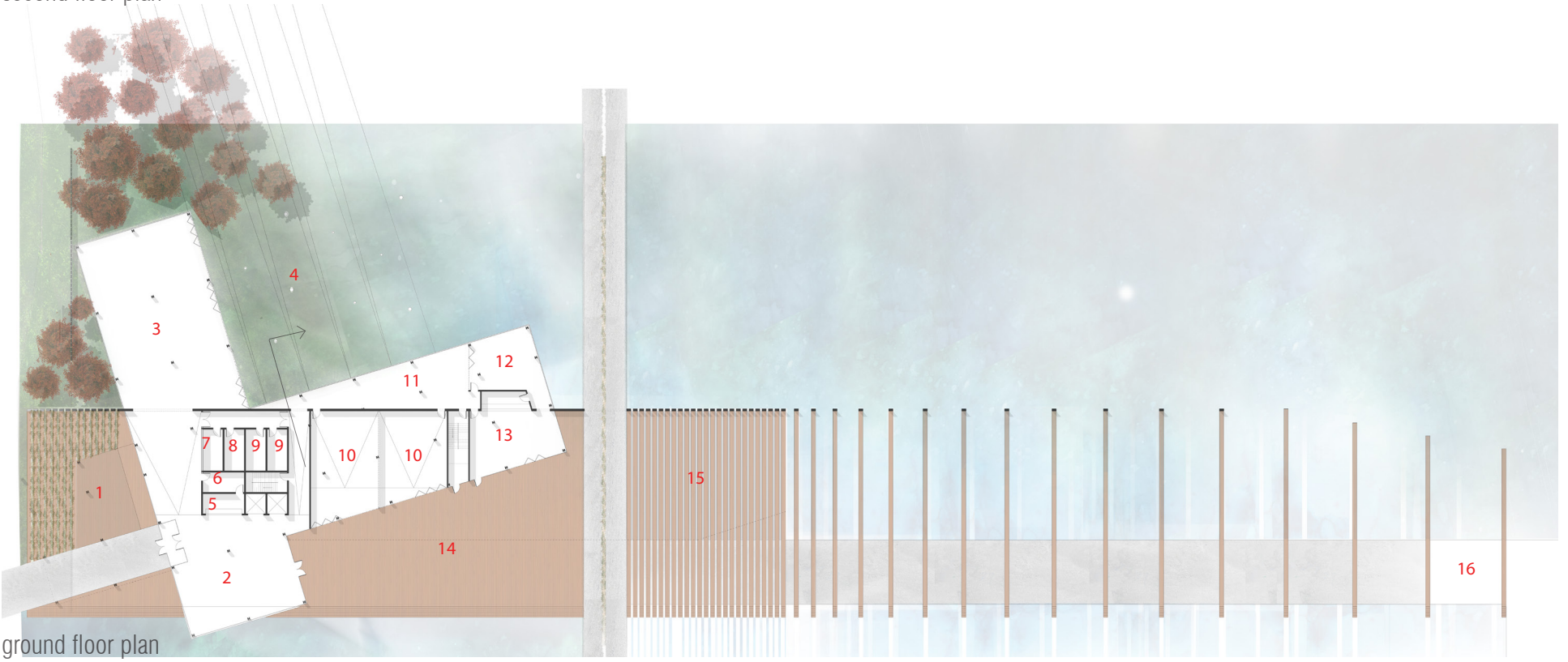


street edge

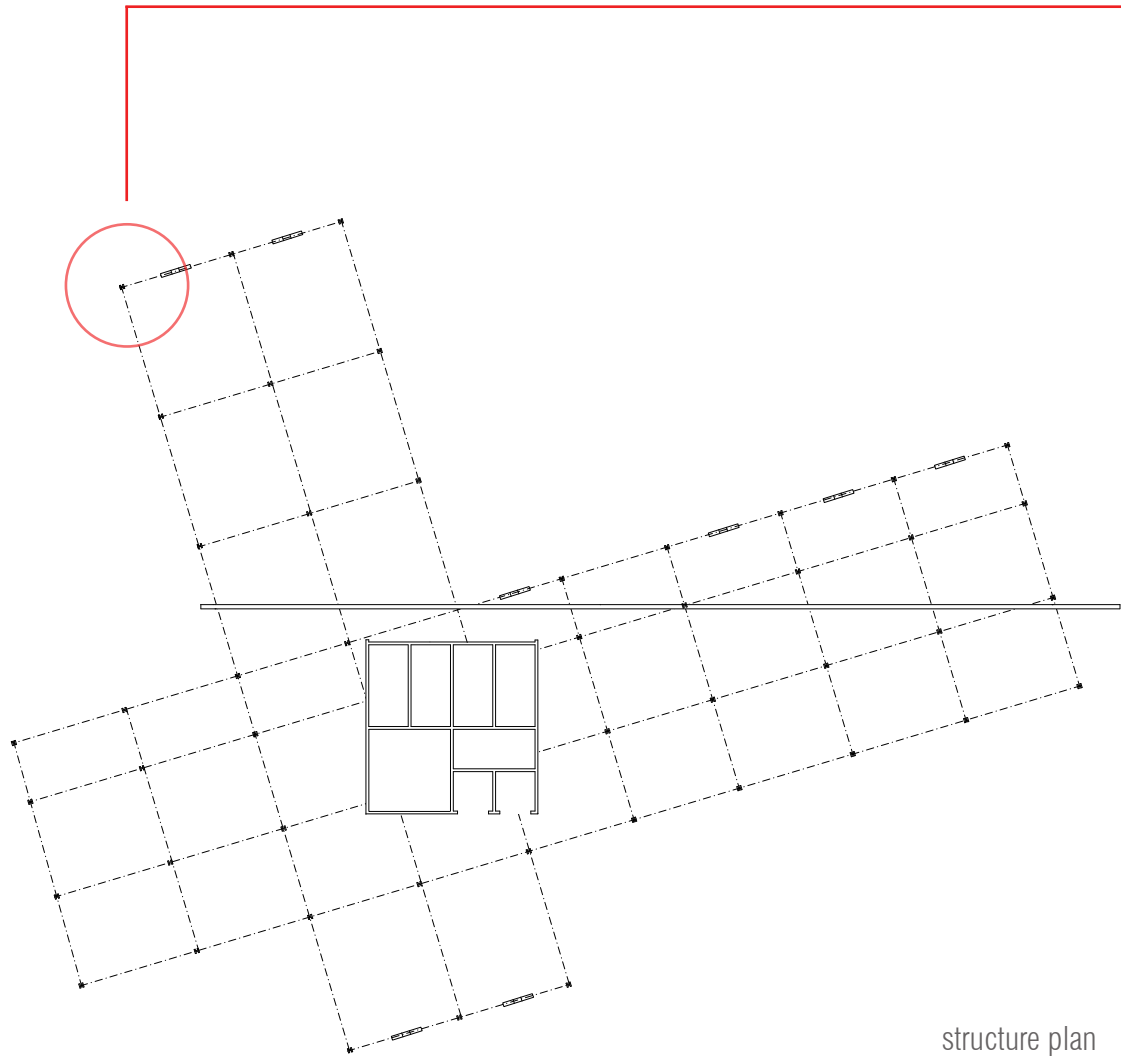
- 1 entry plaza
- 2 lobby
- 3 exhibition space
- 4 outdoor gallery
- 5 ticket + coat check
- 6 service
- 7 control room
- 8 green room
- 9 restroom
- 10 lecture space
- 11 observation deck
- 12 retail
- 13 cafe
- 14 outdoor gathering space
- 15 informal amphitheater
- 16 taxi stop
- 17 maker studios
- 18 library
- 19 storage
- 20 mechanical
- 21 classroom
- 22 offices
- 23 staff lounge
- 24 patio + garden



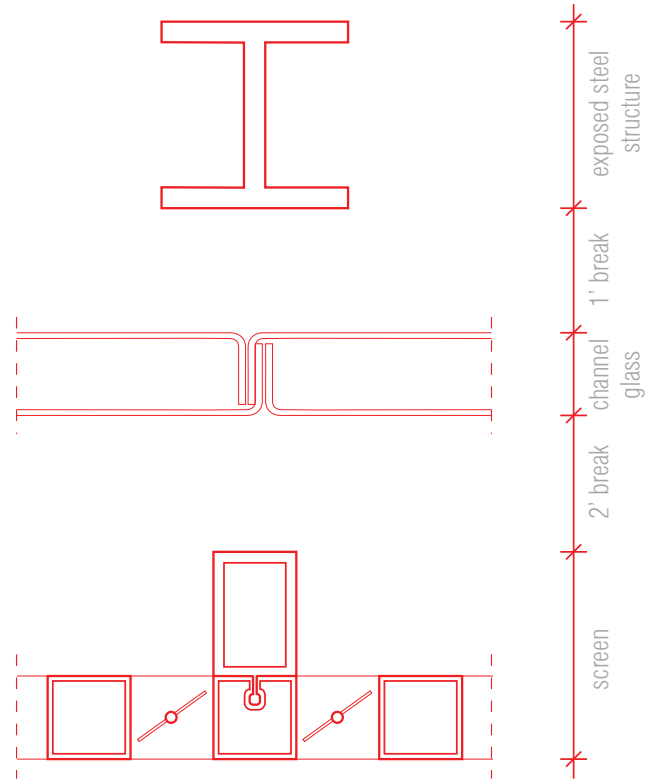
second floor plan



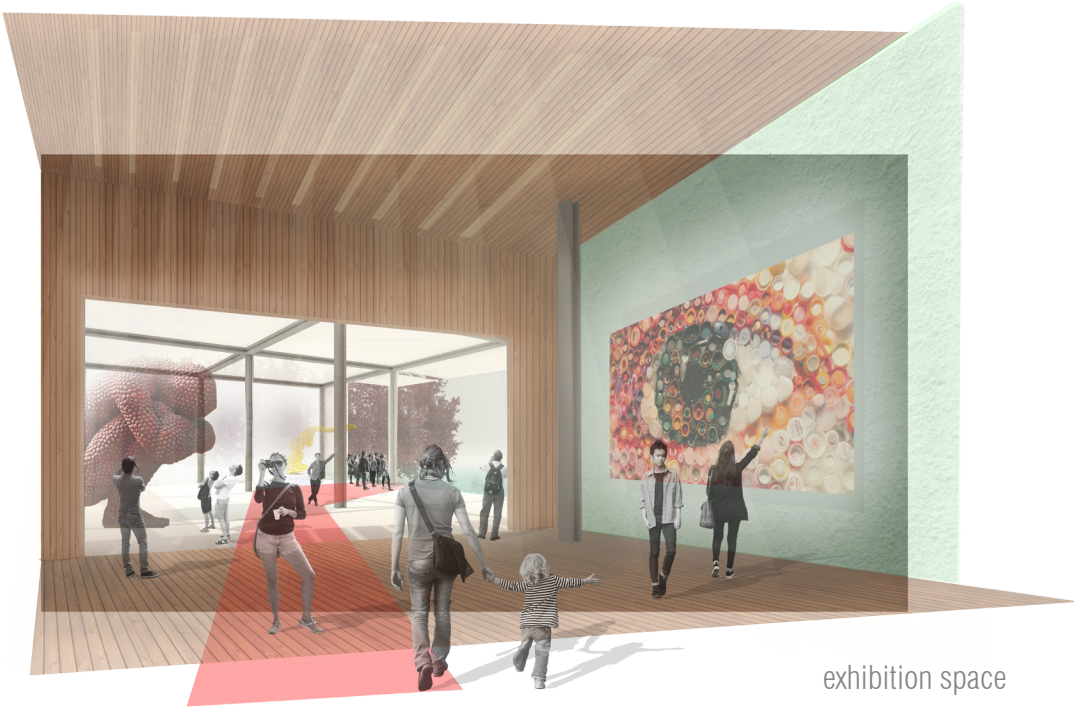
ground floor plan



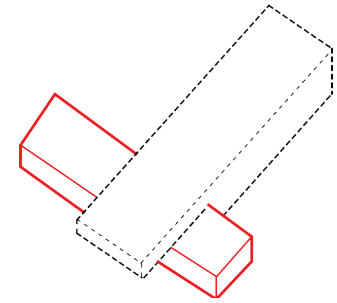
structure plan



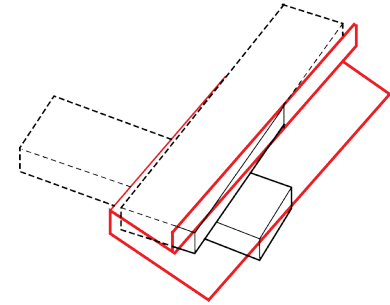
detail section



exhibition space



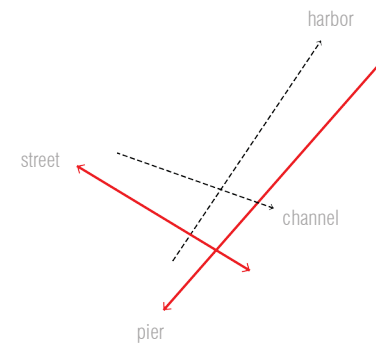
anchor to pier



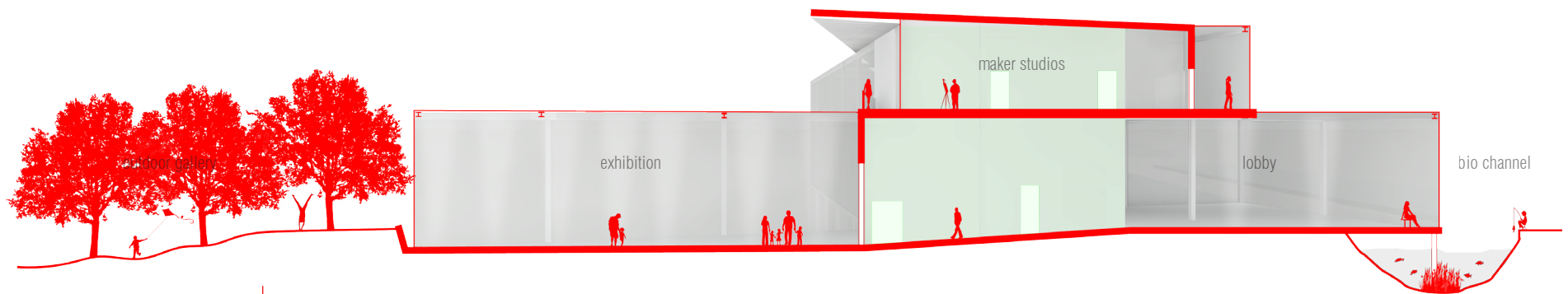
transformative v. fixed



maker spaces + library



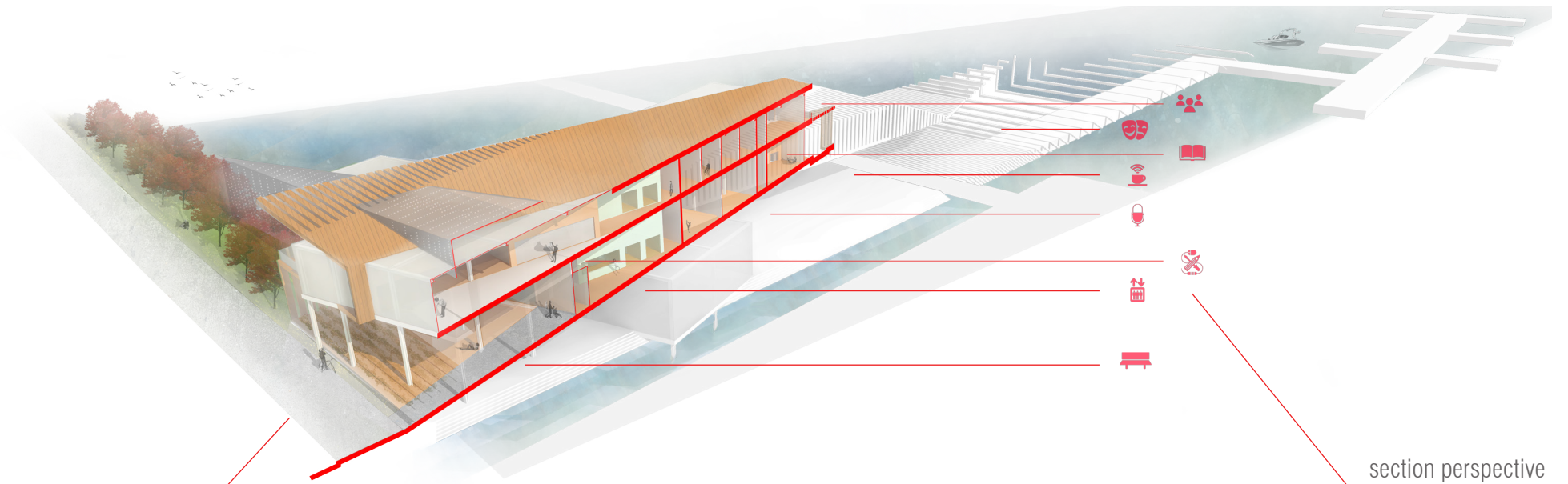
axes



transverse section



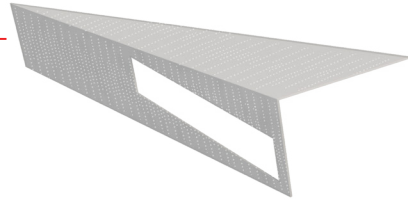
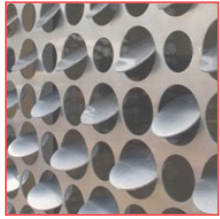
south elevation



section perspective

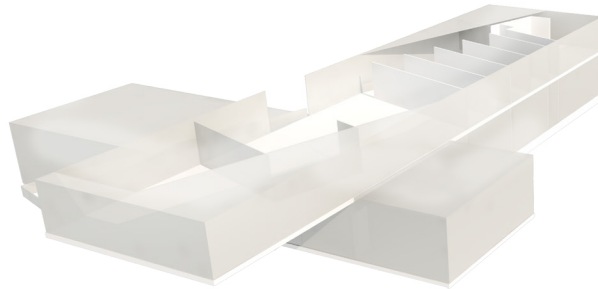


east elevation



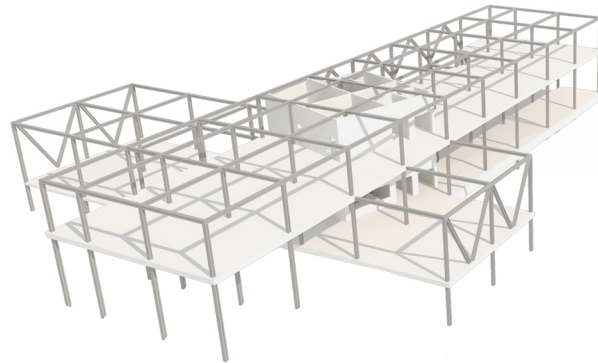
eclipsis screen

an advanced building facade compromised of two layers: a metal shutter shade and a translucent insulating panel. the shutter shade slides along the south façade, providing protection from direct sunlight while simultaneously allowing for indirect natural lighting and a spatial definition to the building site



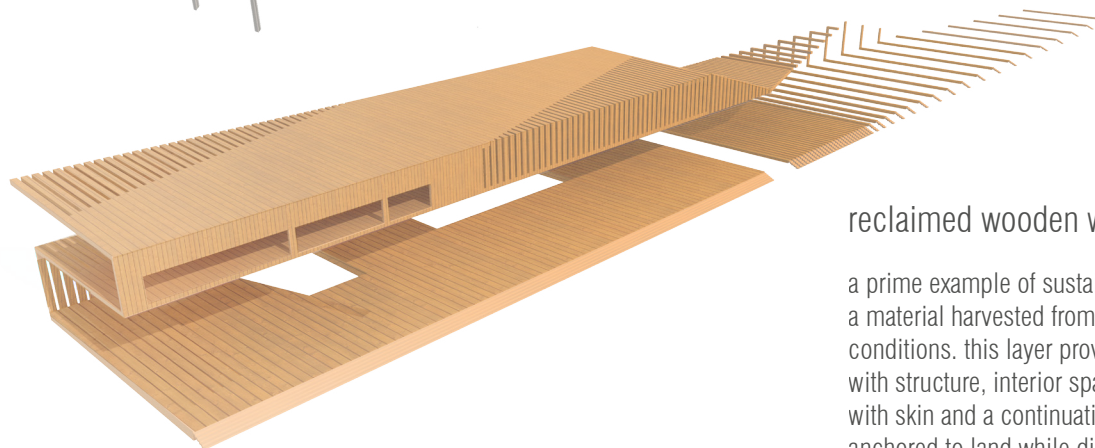
channel glass skin

a glowing glass skin which allows a lantern effect for the domino west water edge. the glass skin provides indoor privacy, natural indirect lighting and a modern look to the seamless voids which separate the indoors from the outdoors



exposed steel structure

a system composed of exposed columns, beams, lateral bracing and load bearing walls. the system is the inner layer to the skin, providing stability and strength to interior spaces as it penetrates through all other layers



reclaimed wooden wrap

a prime example of sustainable technologies as a material harvested from existing edge and pier conditions. this layer provides stability when engaging with structure, interior spatial definition when engaging with skin and a continuation of the pier form that is anchored to land while dissolving into the waterscape



outdoor gallery + sidewalk approach