

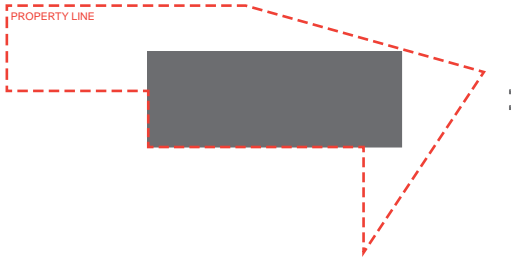


VIEW FROM NORTHEAST

CARLOS ROSARIO
INTERNATIONAL PCS
SONIA GUTIERREZ CAMPUS
Washington | DC
Institutional Architecture

Project consists of three (3) stories above grade and partial basement. Building program includes main common atrium space, resource center, office space, English and computer classrooms, four (4) culinary labs/training kitchens, nursing aid training lab, cafeteria, and outdoor terrace. The students served are college-age.

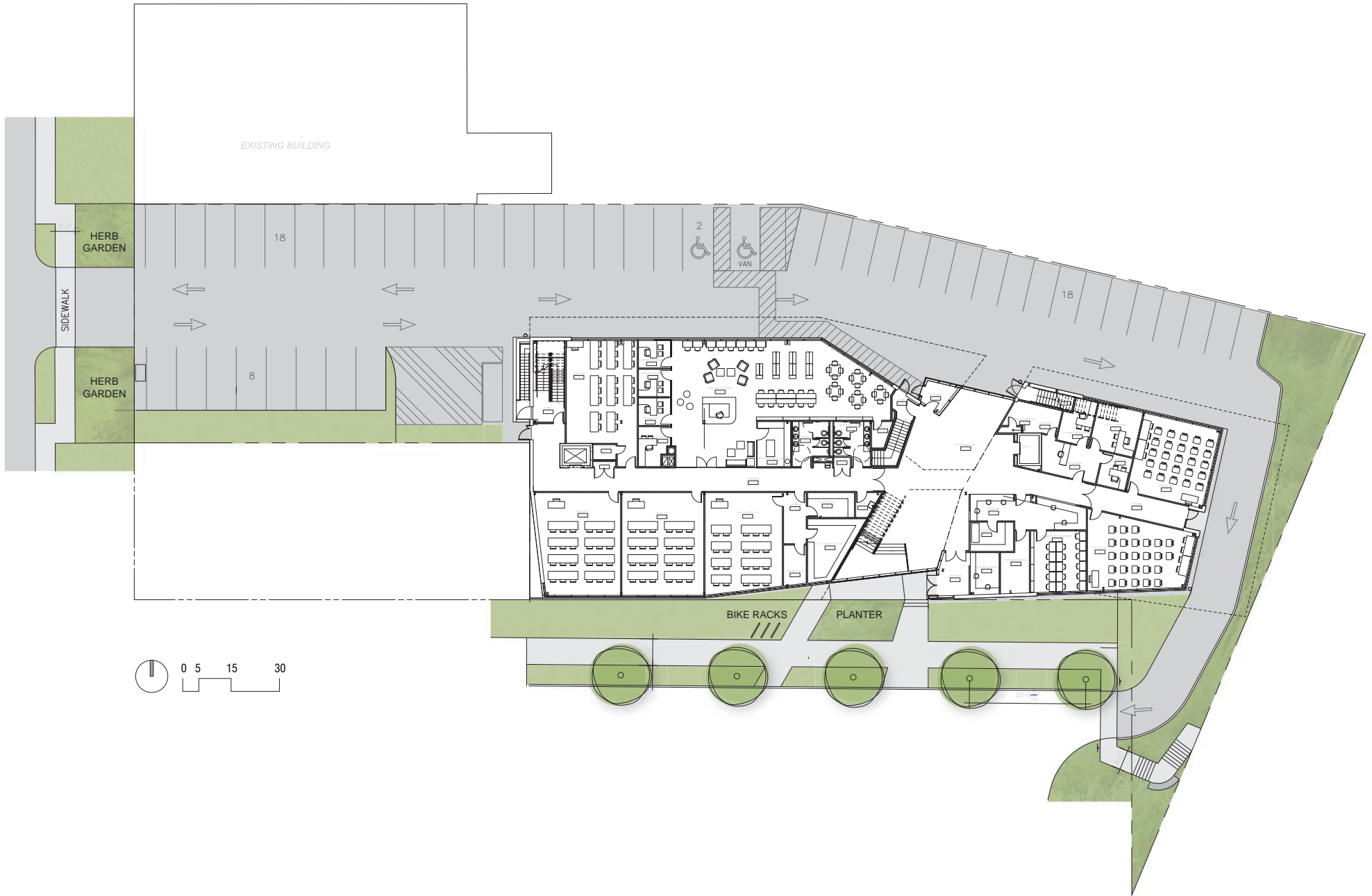
This project was designed to accommodate multiple tenants: Carlos Rosario International PCS, second campus for adult education public charter school; Community Capital Corporation, headquarters office space; and Ana G. Mendez University System, expansion campus for higher education university program. Challenges included working with all three groups, compiling program and building planning to accommodate individual requirements and specifications. The unique building design responds to the clients' needs and program, as well as the irregular site and urban constraints.



-
-
-
-
-
-



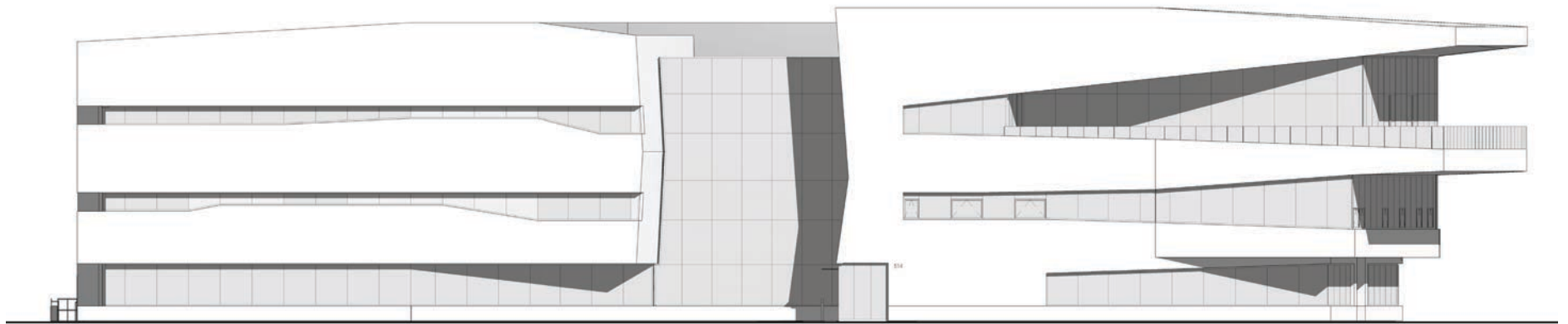
VIEW FROM SOUTH SIDE



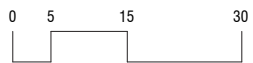
SITE PLAN



NORTH ELEVATION

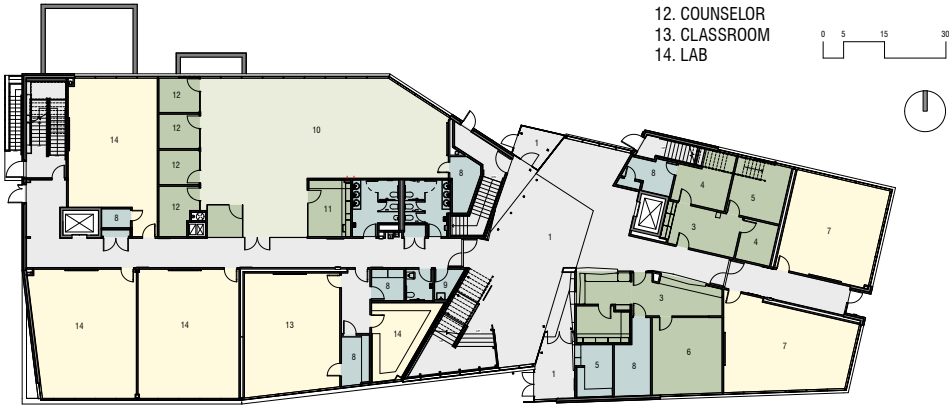


SOUTH ELEVATION



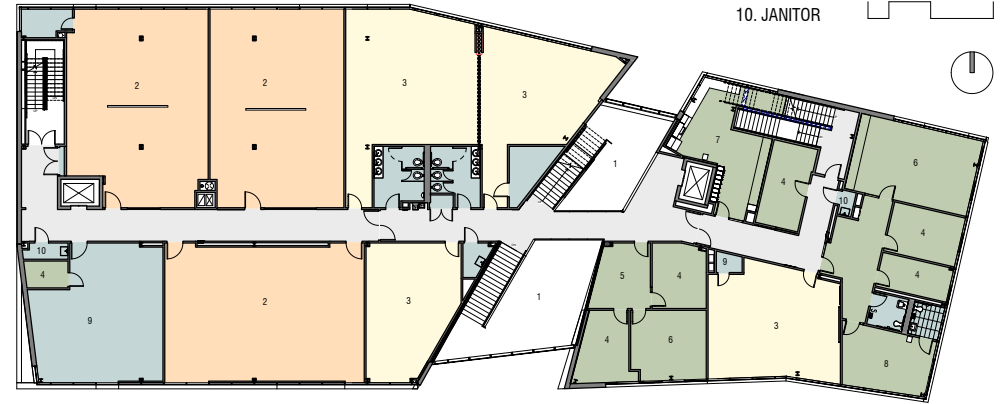
ELEVATIONS

- 1. ENTRANCE
- 2. LOBBY
- 3. RECEPTION
- 4. OFFICE
- 5. PRINCIPAL
- 5. SECURITY
- 6. ASSESSMENT
- 7. ENGLISH
- 8. STORAGE
- 9. JANITOR
- 10. RESOURCE CENTER
- 11. LIBRARIAN
- 12. COUNSELOR
- 13. CLASSROOM
- 14. LAB



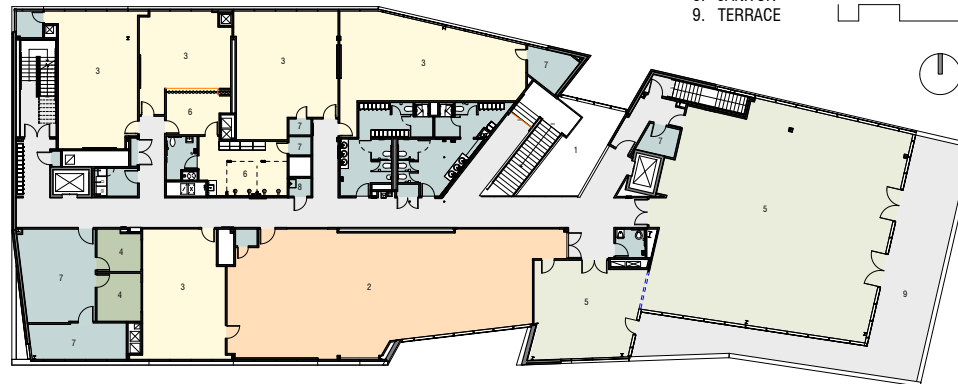
FIRST FLOOR PLAN

- 1. ATRIUM OPEN TO BELOW
- 2. CULINARY LAB
- 3. CLASSROOM
- 4. OFFICE
- 5. RECEPTION
- 6. MEETING ROOM
- 7. STAFF LOUNGE
- 8. DIRECTOR
- 9. STORAGE
- 10. JANITOR



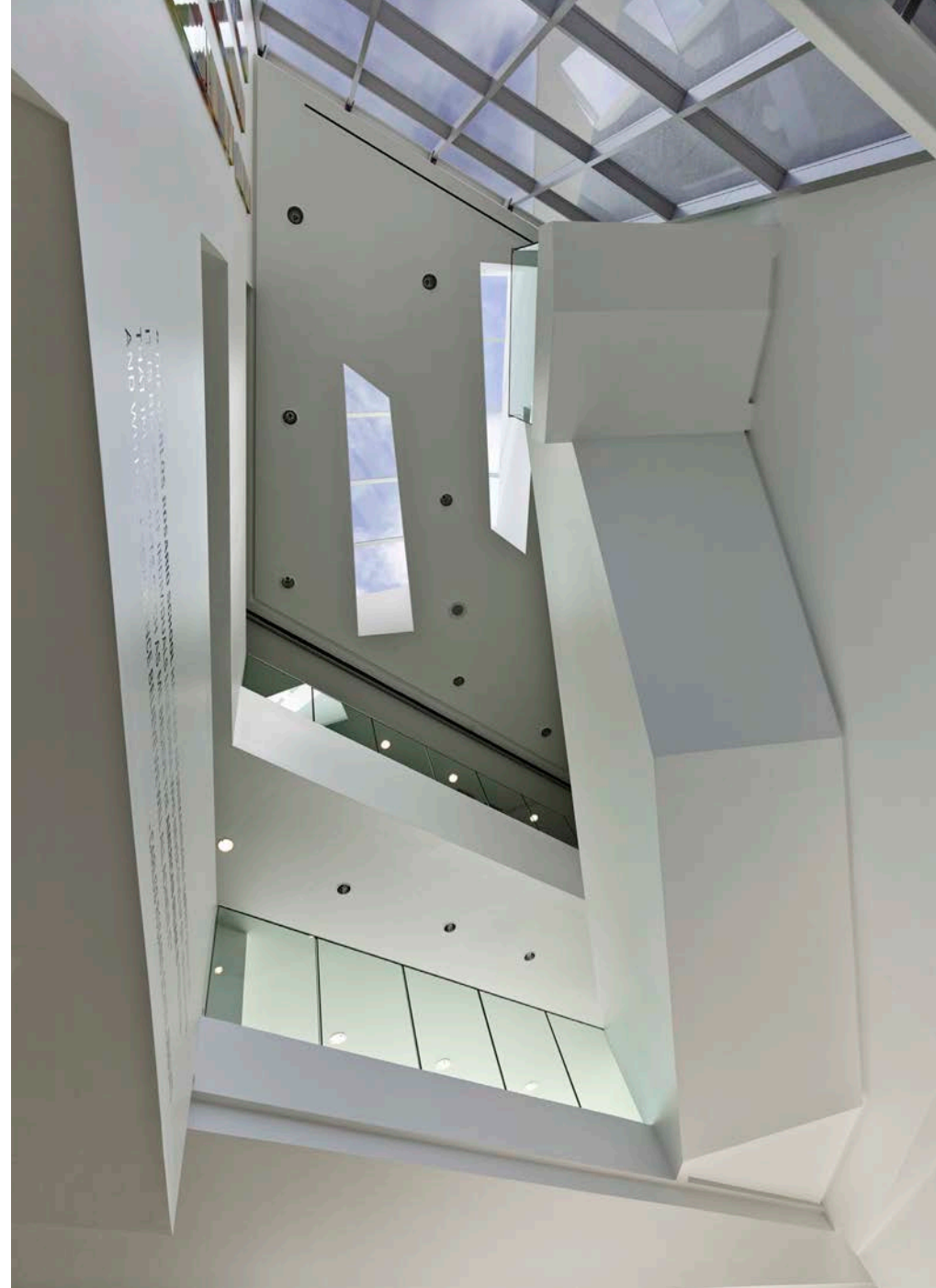
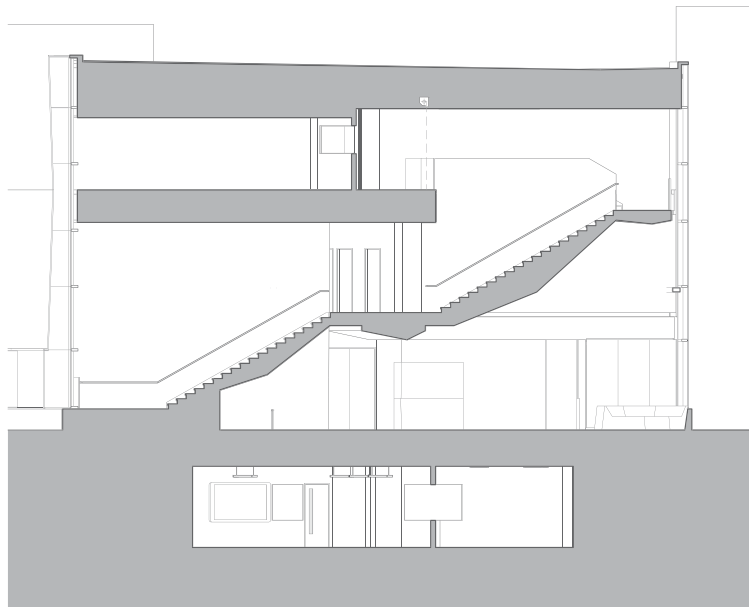
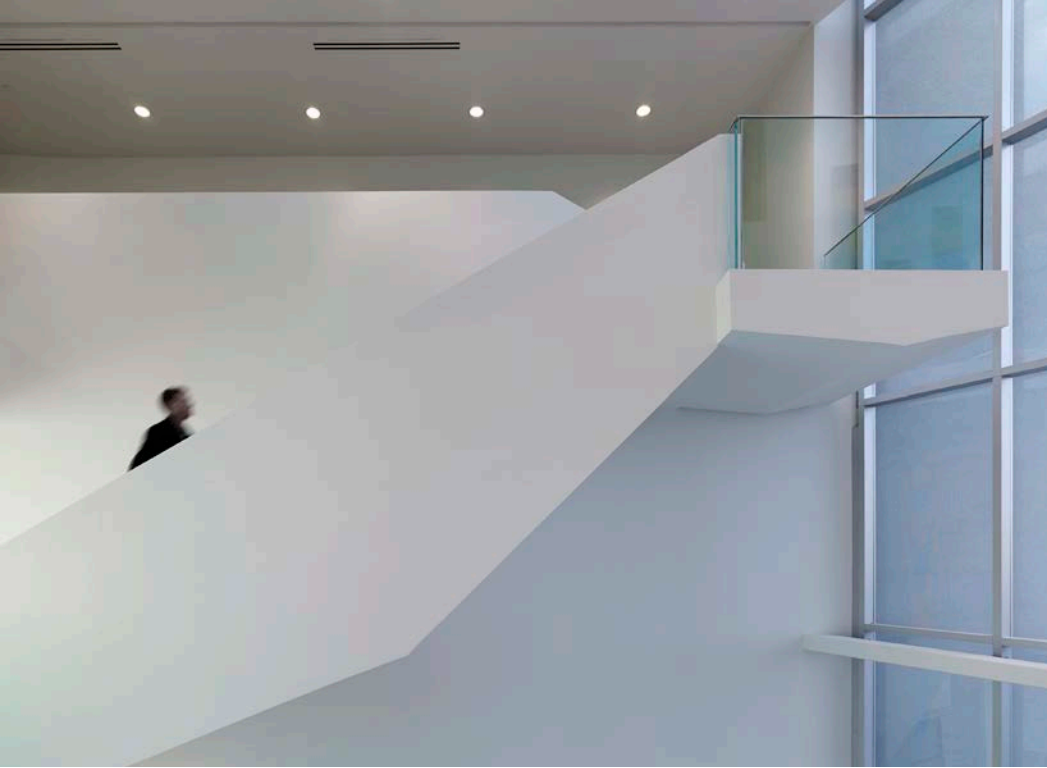
SECOND FLOOR PLAN

- 1. ATRIUM OPEN TO BELOW
- 2. CARLOS ROSARIO KITCHEN
- 3. CLASSROOM
- 4. OFFICE
- 5. CAFETERIA
- 6. NURSE AID TRAINING LAB
- 7. STORAGE
- 8. JANITOR
- 9. TERRACE

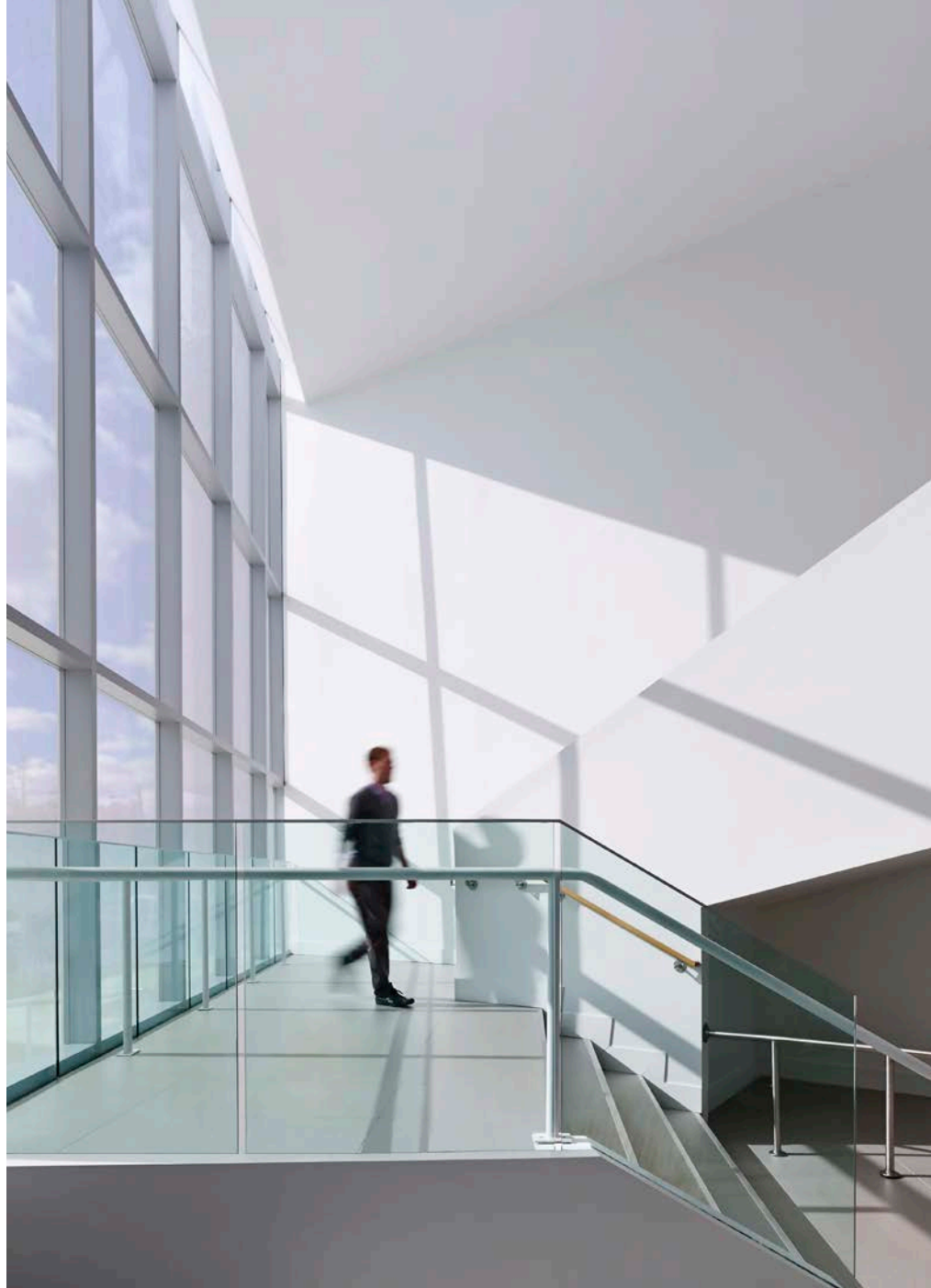


THIRD FLOOR PLAN

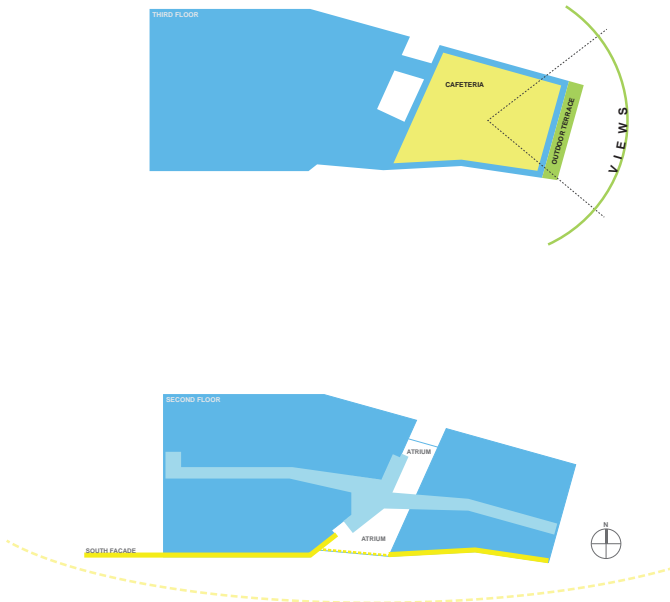
FLOOR PLANS



ATRIUM



ATRIUM



CAFETERIA/ BALCONY



CAFETERIA



VIEW FROM SOUTH SIDE