



Woods Residence

Category: Residential Architecture

Woods Residence is a private residence located in Easton, MD. The project scope included a complete interior renovation, including a new custom kitchen, living spaces, bedrooms, exterior deck and pergola. The exterior brick was painted white to refresh the building and better correspond to the contemporary design of the interior renovation. A number of original interior walls were removed, resulting in a large open gathering space with 2 fireplaces at the center of the house. The custom fabricated kitchen includes a 19-ft island, a window and view to the main house entrance and the boardwalk with pond. A skylight over the kitchen island allows additional light into the large communal space, which is the heart of the home.



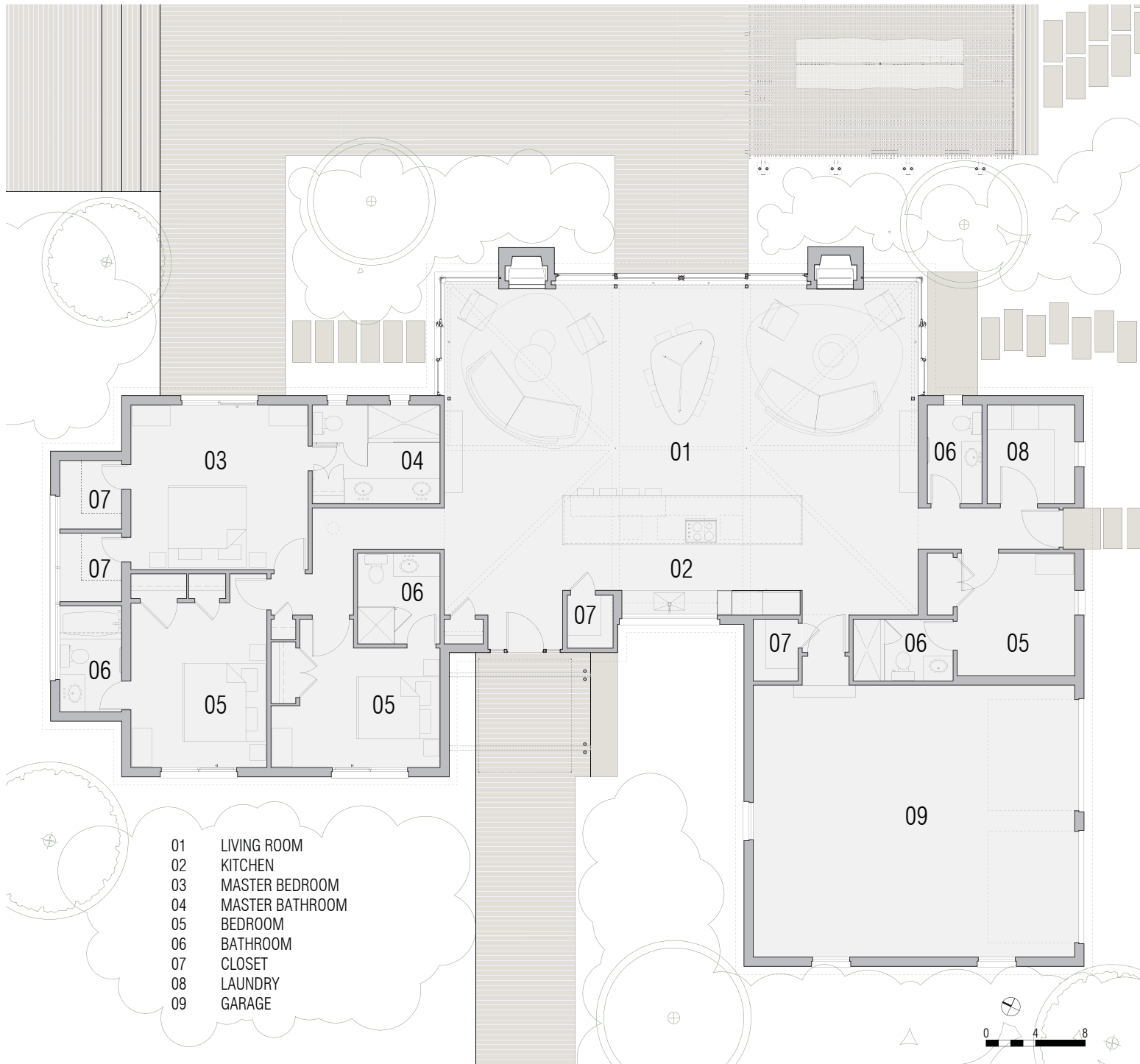
Site Plan



Before



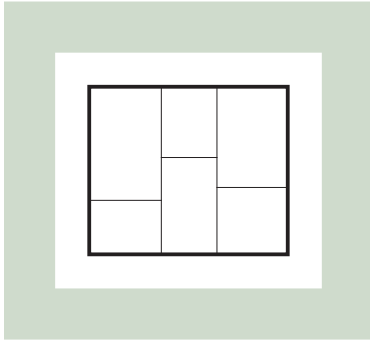
After



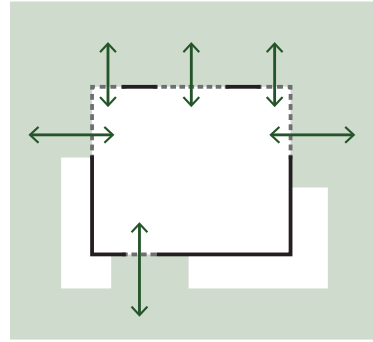
Floor Plan







BEFORE



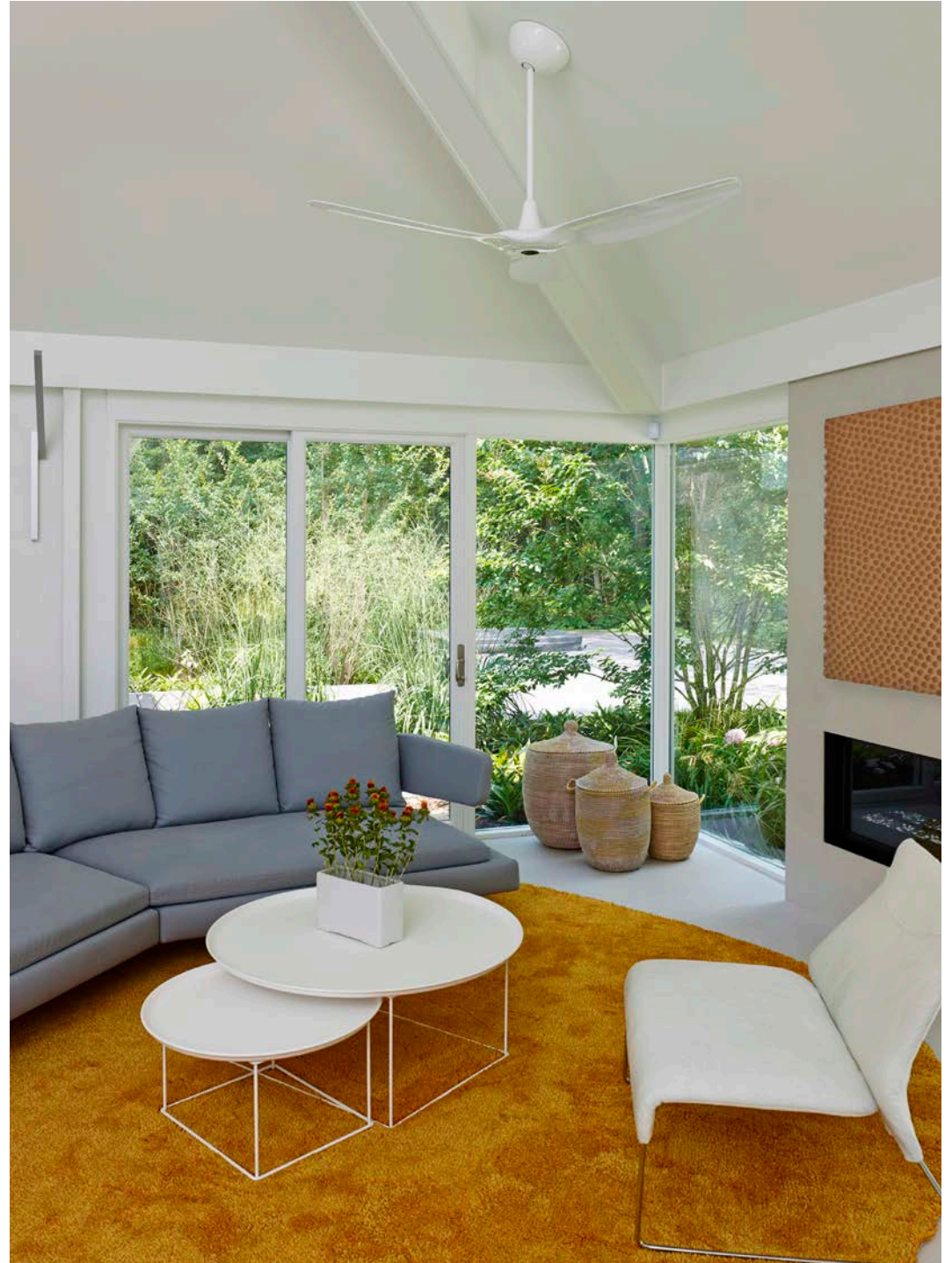
AFTER

Before: The home was dark, fully enclosed, and completely separated from its natural surroundings. The interior was broken up into a series of small spaces, with limited connections to one another.

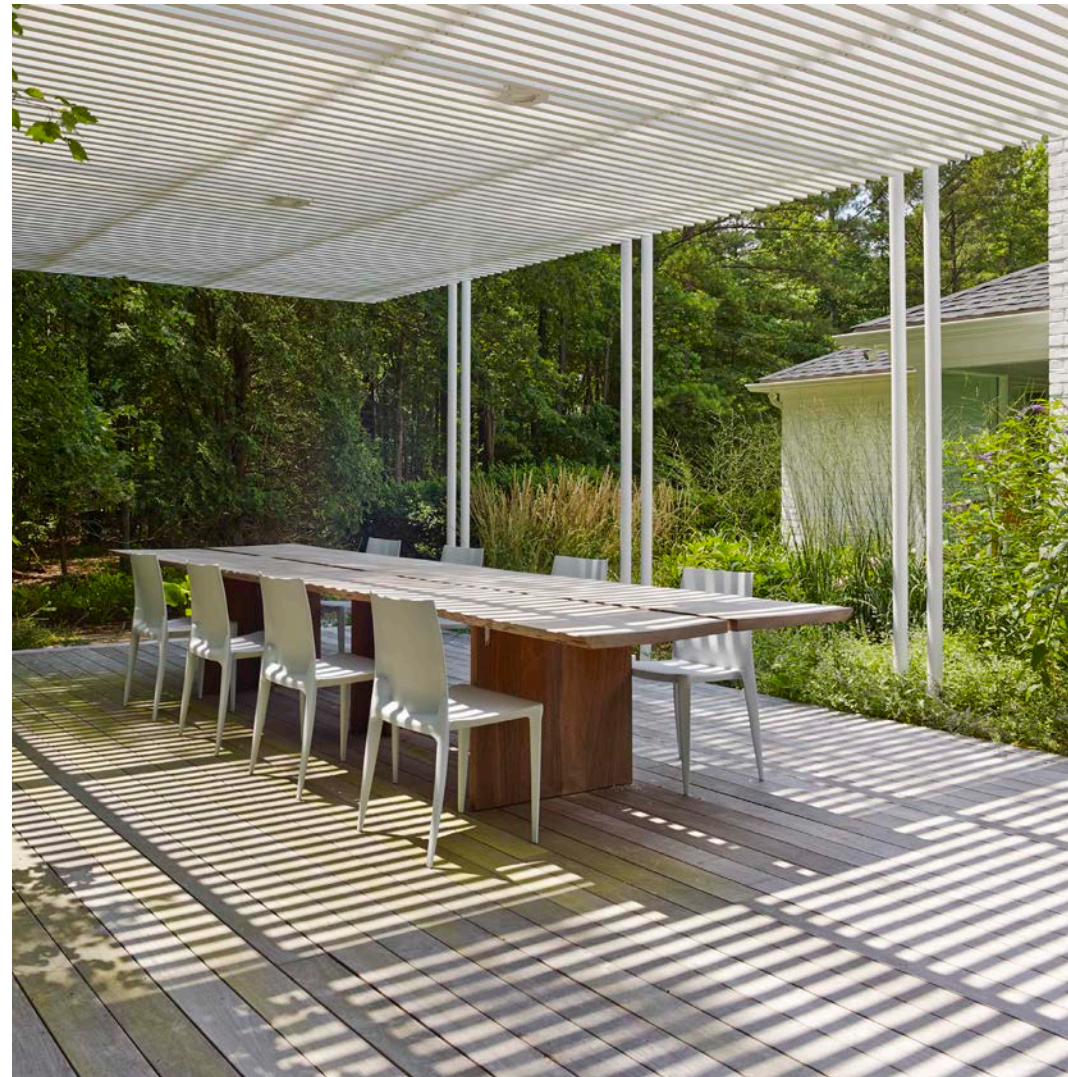
After: By removing interior partitions, a large open space was created, which serves as the core of the home. By removing portions of the exterior wall, a strategic connection is made between the indoor and outdoor spaces, bringing the landscape into the home.



Before



After



The outdoor space features gray wood decking, custom design pergola and furniture and a beautiful landscape design. The architect designed a contemporary wood table and a metal bench for this outdoor environment.



Through the design, the landscape penetrates inside the house. It establishes a dialogue between the interior living space and the outdoor environment. Throughout the house, emphasis is placed on the outside, with visual and physical connections to the surrounding garden landscape and the forest beyond.