



Performing Arts and Humanities Building

Project Name / Location

UMBC Performing Arts and Humanities Building (PAHB) / Baltimore, MD

Project Category

Institutional Architecture

Program

176,000 sf, 4-story performing arts center.

Project Synopsis

PAHB is situated on 4.8 acres on the west side of Hilltop Rd, adjacent to existing Fine Arts, Engineering and ITE buildings.

Providing a focal point for the University of Maryland's Baltimore County Honors College campus, the LEED Gold Performing Arts and Humanities Building (PAHB) reflects the school's commitment to interdisciplinary interaction, as well as excellence in individual specialties. The facility enhances UMBC's teaching, research and public outreach, and heightens the visibility of the arts and humanities as major components of campus and community life.

The PAHB houses numerous state-of-the-art venues, including a 275-seat Proscenium Theatre, Black Box, 350-seat Concert Hall, Dance Studio, Scene Shop, and many other studios and rehearsal spaces. Academic areas include informal learning environments, lecture spaces, flexible classrooms, and administrative areas. Throughout the building, emphasis is placed on defining each department's unique space while encouraging interdisciplinary thought and discussion through break-out space and seminar rooms.

Distinct visual identity of the Humanities and Arts programs is achieved through composition, material selection, and form. The brick Humanities volume serves as the building's connecting spine, organizing the organic, stainless steel, metal-clad Performing Arts venues. The Concert Hall and Proscenium Theater flank either end of the Humanities corridor, their curves designed to welcome visitors and provide community gathering points. The all-glass Dance Studio, adjacent to the Concert Hall, cantilevers over the second floor entrance, serving as a marquee to showcase the dance department.

Legend

- 1 Proscenium Theatre
- 2 Theatre Rehearsal Studio
- 3 Acting and Directing Studio
- 4 Proscenium Theatre Lobby/Entrance
- 5 General Classroom
- 6 Black Box Theatre
- 7 Scene Shop
- 8 Dance Technology Studio
- 9 Concert Hall Lobby/Entrance
- 10 Concert Hall
- 11 Instrument Ensemble Studio
- 12 Recording Studio
- 13 South Courtyard
- 14 Hilltop Circle
- 15 Hilltop Road
- 16 Fine Arts Building
- 17 Engineering Building
- 18 ITE Building

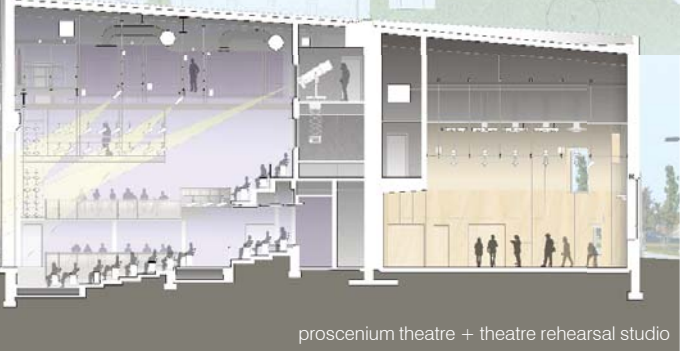
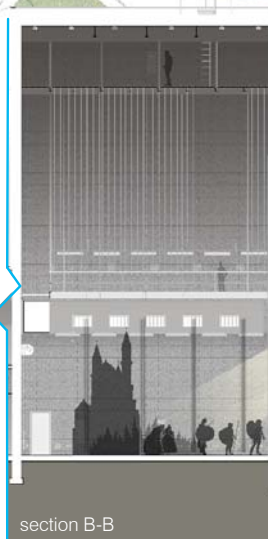
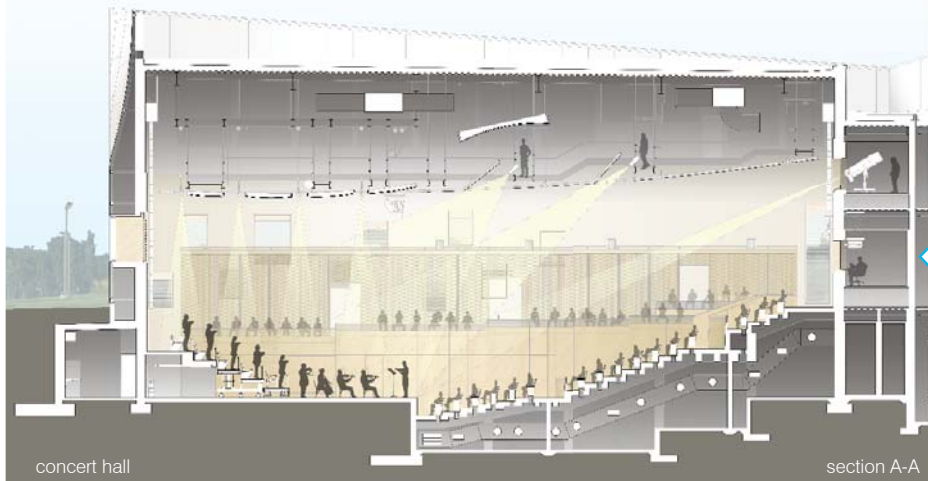
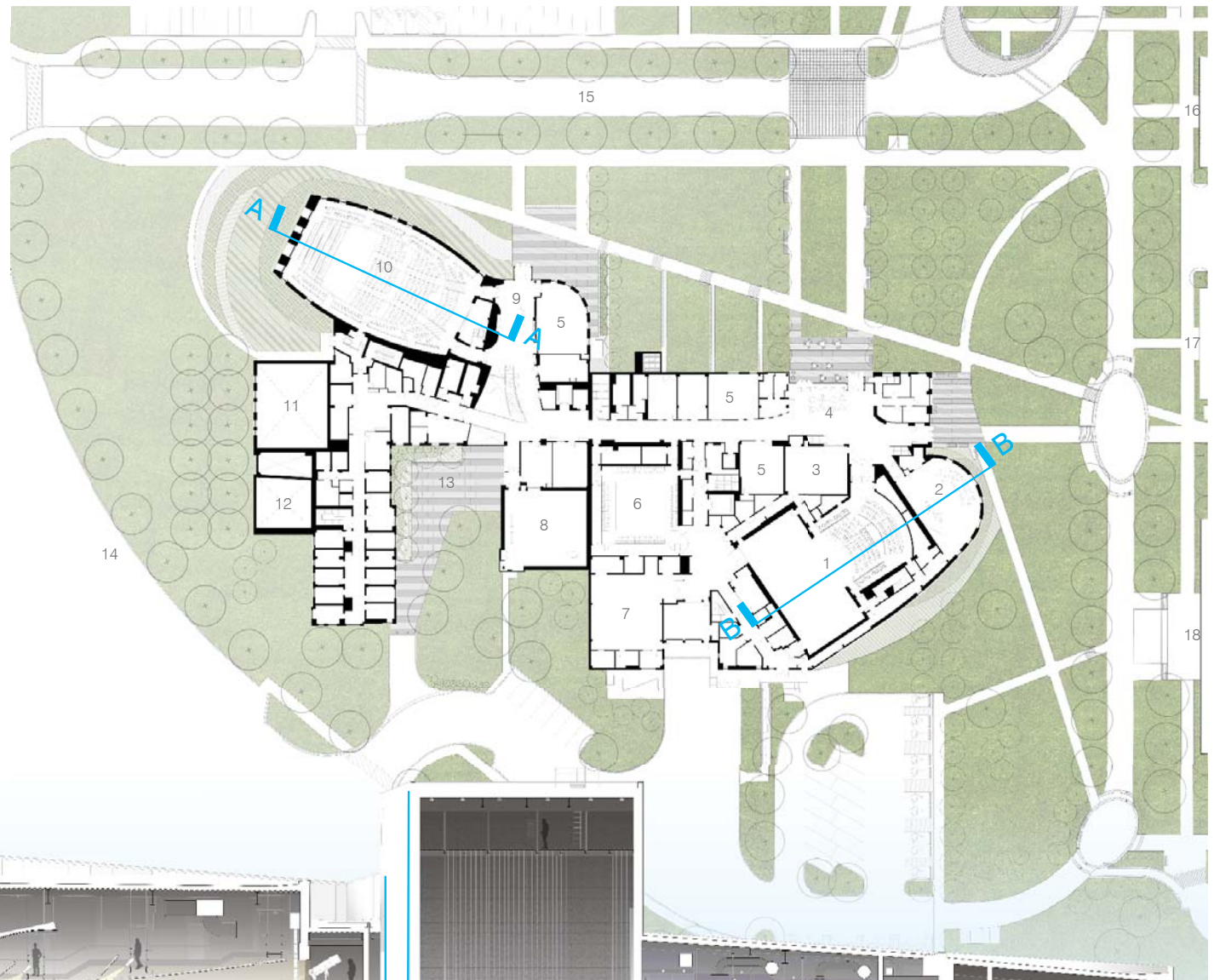




Exhibit B: June 2014 (+/- 52% impervious area)

Exhibit A: Existing Conditions
June 2010 (+/- 72% impervious area)

Campus Community

Once a sea of asphalt (Exhibit A), the site is now a green landscape surrounding the PAHB (Exhibit B). The reduction of impervious surfaces lessens run-off pollutants and heat-island effect, and gives the UMBC community much needed green space and outdoor courtyards.

1

The **Proscenium Theatre's** organic volume is the western anchor of the Humanities Corridor. The dramatic shape complements the Corridor's rectilinear form and creates a community space on the first floor.

2

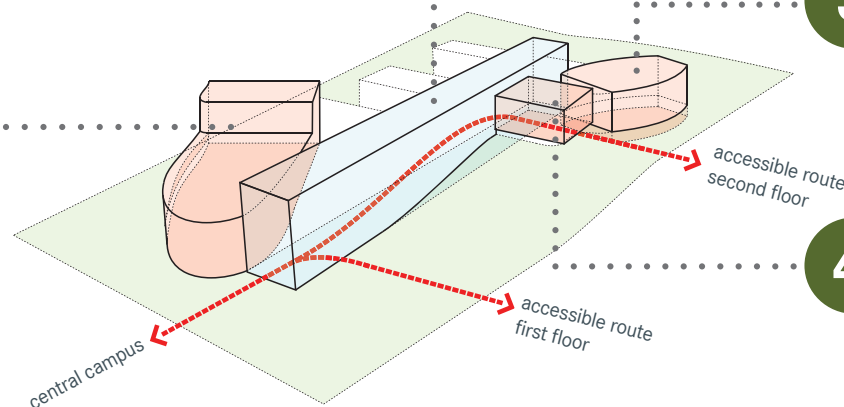
The **Humanities Corridor** is an interior boulevard connecting central campus with student housing and parking. It is the building's spine that ties together PAHB's many programs.

3

The **Concert Hall** is the literal and conceptual entrance to the site. The gestural curves welcome visitors and generate a second floor community gathering point.

4

The **Dance Studio's** massive glass cube cantilevers gracefully over the second floor entrance as a marquee showcasing the dance department for the campus.



1

Proscenium Theater

Although the height and proportion of a theatre is driven by precise specifications, the PAHB Proscenium Theater's dramatic curves, stainless steel shingles, and landscaping work together to disguise technical requirements with an elegant and playful facade.

2

Humanities Corridor

The long, rectilinear roman brick volume incorporates a playful “pushing and pulling” of windows and curtain wall elements to bring depth to the facade, minimizing the flat, repetitive look of many brick buildings.





Proscenium Theatre Lobby



Proscenium Theatre Fly-Tower



Proscenium Theatre Entrance



Proscenium Theatre Audience Seating

3

Concert Hall

The thin and malleable nature of the dimpled stainless-steel shingles is highlighted by complex geometry featured in the Concert Hall's base building design. The panels gracefully articulate harsh corners with a sculptural quality, and capture light and shadow in harmony. Depending on the time of day, the skin can change its mood from cool to warm, like the movements of a sonata.



North-West Elevation



Concert Hall Seating + Acoustical Micro-Perforated Ceiling

4

Dance Studio

During the day, the balancing cube appears monolithic, and dancers can view the beauty of the campus from within the space. At night, the space illuminates, putting the dancers on display.



Dance Studio

A Unique Identity for Humanities and Performing Arts

The distinct visual identity of the Humanities and Arts programs is achieved through composition, material selection and form. The rectilinear brick “spine” houses the Humanities programs and organizes the organic, stainless steel metal-clad Performing Arts venues. Each department demonstrates its unique identity through the use of different material color, yet functions as one building. All departments share break-out space and seminar rooms to foster multidisciplinary engagement.



Exterior

