



R.I.S.E DEMONSTRATION CENTER WASHINGTON, DC

PROJECT CATEGORY: ARCHITECTURE

R.I.S.E. Demonstration Center is the adaptive reuse of the historic Chapel at St. Elizabeths East Campus to create an interim innovation hub and community gathering space. A master plan vision for the campus proposes to revitalize and transform the site to provide accessible education in technology and act as a business incubator for the community. As a part of the earliest phase of implementation, the adaption of the Chapel building serves as a cornerstone for the master plan.

The Chapel is a symbolic landmark for the local community. With sensitivity to this, the renovation

preserved the historic exterior, while dramatically altering its function inside. A new west entry, exterior walkways, and public space transform the Chapel's relationship to the community from that of an isolated visual landmark to an accessible community space. A circulation spine bisects the ground floor, from east to west, and divides the original chapel into two large, flexible-use spaces.

The interior design incorporates simple geometric motifs and bold colors to reflect and emphasize the building's new function. The palette of bold colors and linear patterns recall the interior geom-

etry of a computer reinforcing a deliberate effort to re-envision the space.

From initial concept to grand opening in less than six months, the revitalization of the Chapel shows how a design-build partnership can overcome the challenges of a short time frame. The team focused on tailored design gestures and capitalized on local materials and resources. The project was a true partnership between owner, design team and construction team.

RECONNECTING THE COMMUNITY

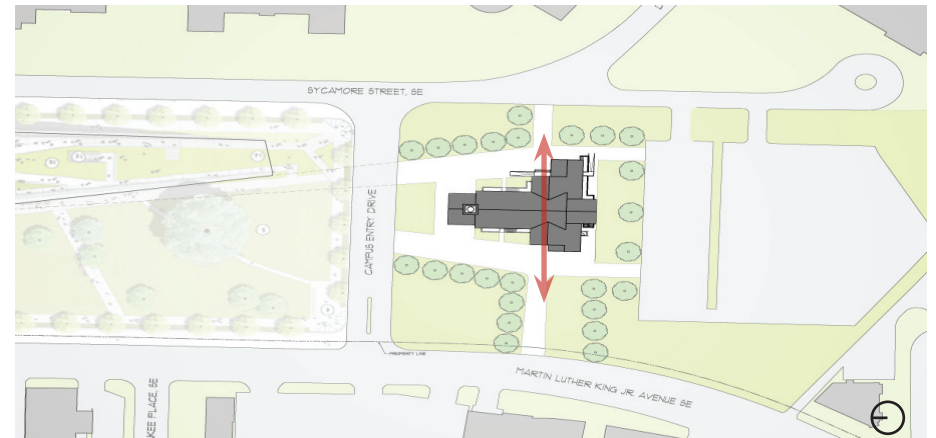


HISTORIC EXTERIOR OF CHAPEL BUILDING WITH NEW ENTRY FROM MARTIN LUTHER KING JR. AVENUE SE

New entrances at the east and the west sides of the building are connected through the Great Hall. This central space connects the community on the west to the campus on the east.



LOCATION MAP



SITE PLAN AND CONNECTION FROM COMMUNITY TO CAMPUS



FOSTERING INNOVATION WITH 21ST CENTURY DESIGN

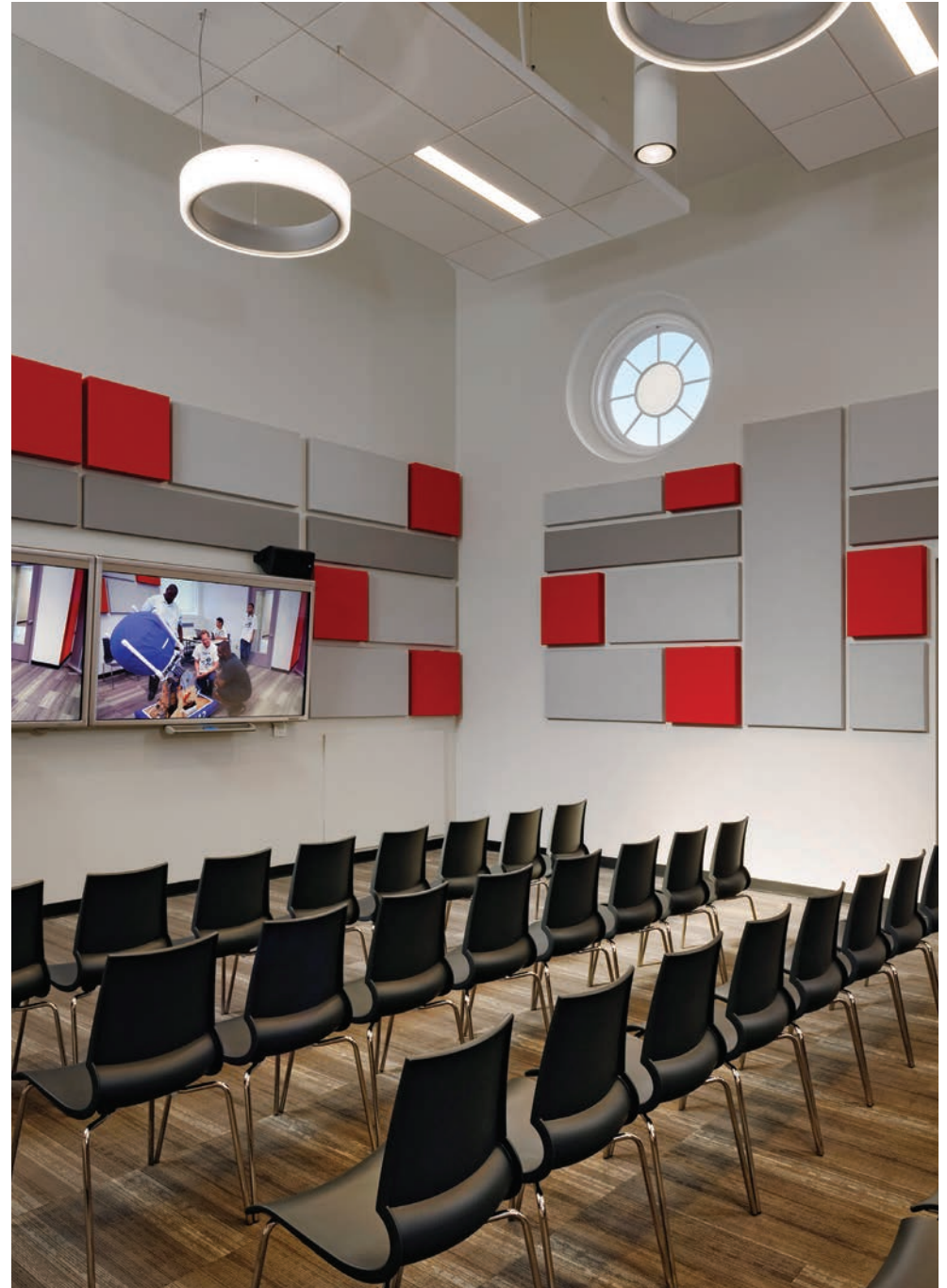


DIGITAL INCLUSION CENTER



The interior design for the new center was influenced by the owner's goal of creating an innovative space to introduce the community to cutting-edge technology and innovation. The branding as well as the interior motifs were inspired by ideas of technology and digital aesthetics. These motifs repeat with variations throughout the building, creating spaces that are both unified and distinctive. The distinctive vault of the main chapel space was retained but transformed with a theatrical grid to provide lighting and acoustical control for the room.

The building achieved LEED Silver Certification level through the re-use of much of the existing structure as well as the use of high-efficiency mechanical systems and electrical and plumbing fixtures. Regional materials and recycled content were emphasized.



LECTURE HALL

EXISTING INTERIOR IMAGES



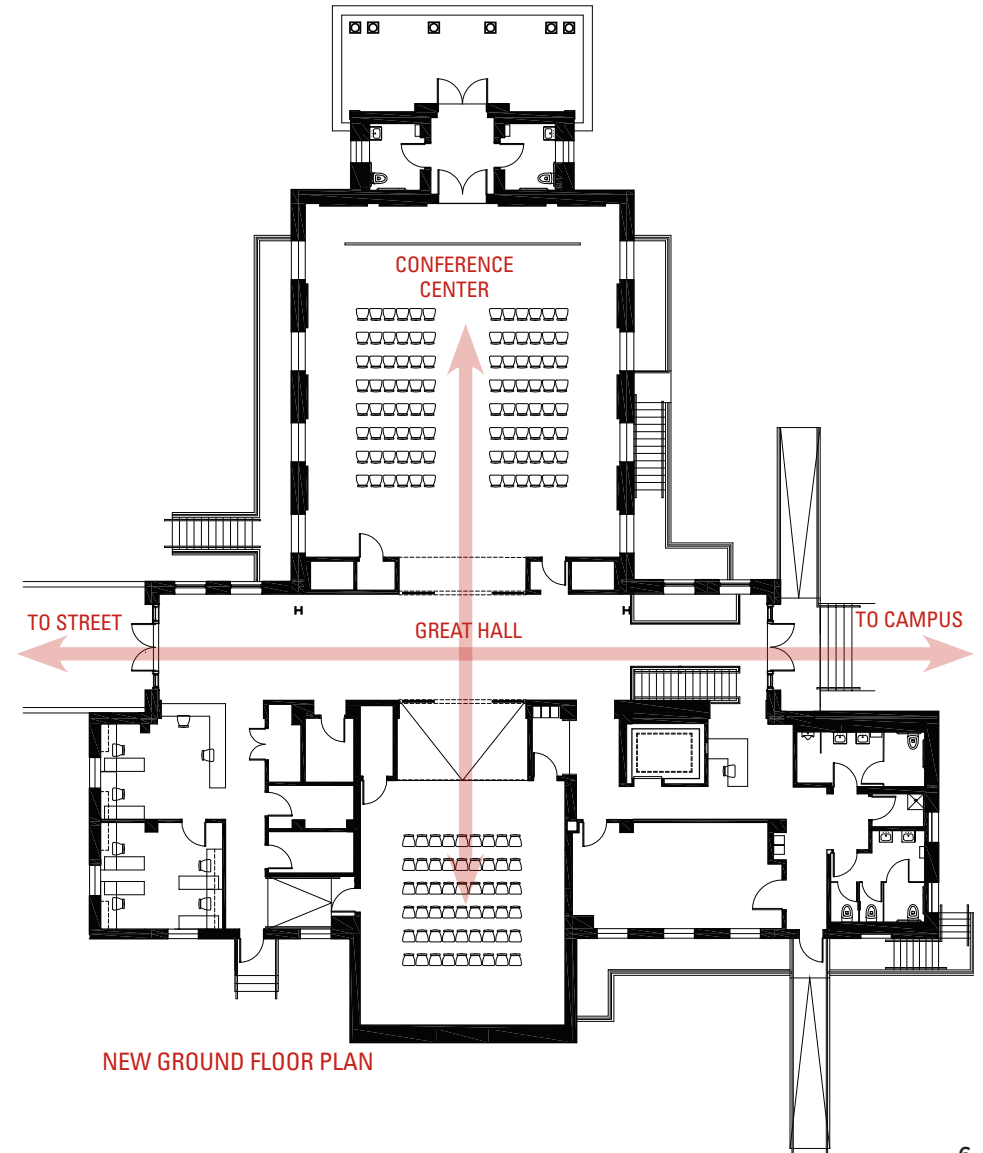
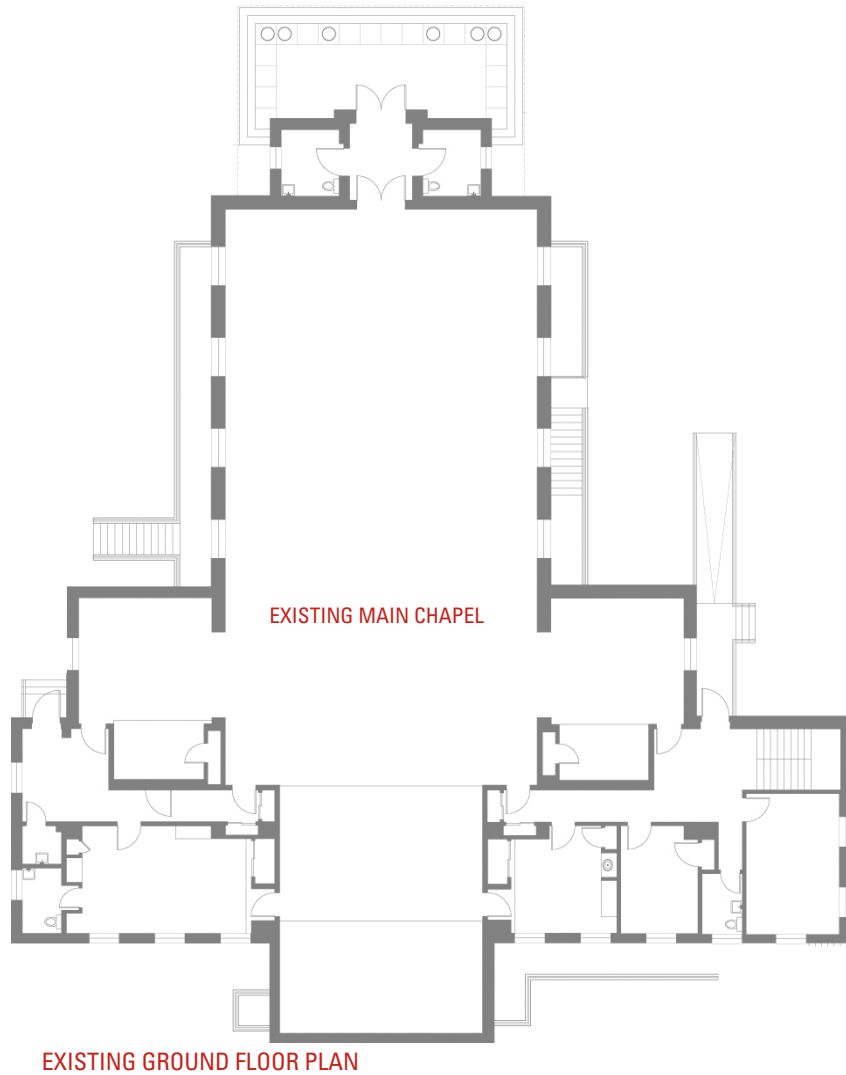
The existing lower level contained a small chapel area and a labyrinth of classrooms and storage spaces. This level had seen significant damage due to flooding.



The existing upper level consisted primarily of the vaulted chapel space with offices and smaller supporting spaces located in side wings.

GROUND FLOOR PLAN

The new Ground Floor plan divides the chapel into two multi-use/flexible spaces. The new Great Hall, a combined entry and circulation spine, serves as a portal from the street to the campus. Building support spaces such as a catering kitchen and offices are also located on this level.

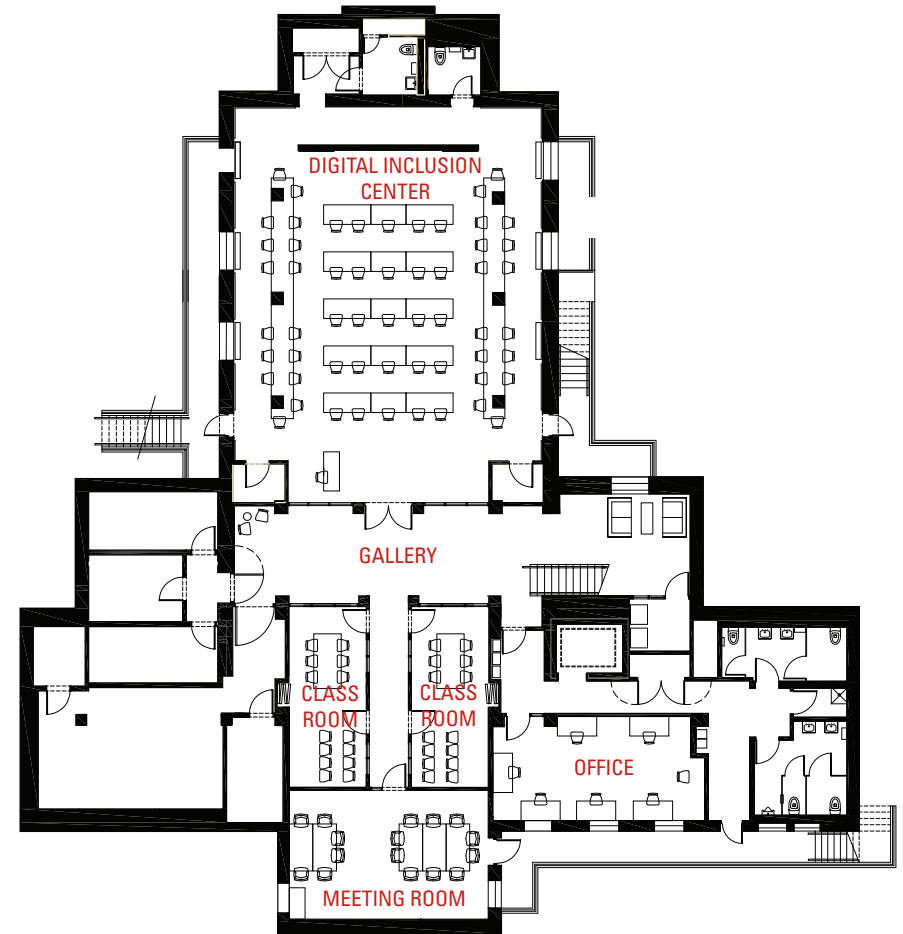


LOWER LEVEL FLOOR PLAN

The adaptive reuse of the Lower Level spaces reorganizes existing classrooms and chapel spaces to create the new Digital Inclusion Center, Classrooms, and Meeting Room. Functions such as new utility services and building systems are also located on the lower level. Connectivity to the Ground Floor Level is improved by a new monumental stair and elevator.



EXISTING LOWER LEVEL PLAN



NEW LOWER LEVEL FLOOR PLAN

FLEXIBLE INNOVATIVE SPACES



DIGITAL INCLUSION CENTER



CONFERENCE CENTER AND LECTURE HALL



COMMUNITY MEETING IN THE CONFERENCE CENTER

R.I.S.E. DEMONSTRATION CENTER

CONNECTING SPACES



GALLERY LOUNGE

Flexible furniture can be reconfigured for use by groups or individuals



MONUMENTAL STAIR

An inviting monumental stairway connects the Great Hall to the lower level Gallery.



GREAT HALL

During events, the Great Hall and the expansive glass doors to the upper level rooms allow guests to circulate freely between spaces.



VIEW INTO CONFERENCE CENTER