

CITY OF ROCKVILLE POLICE HEADQUARTERS

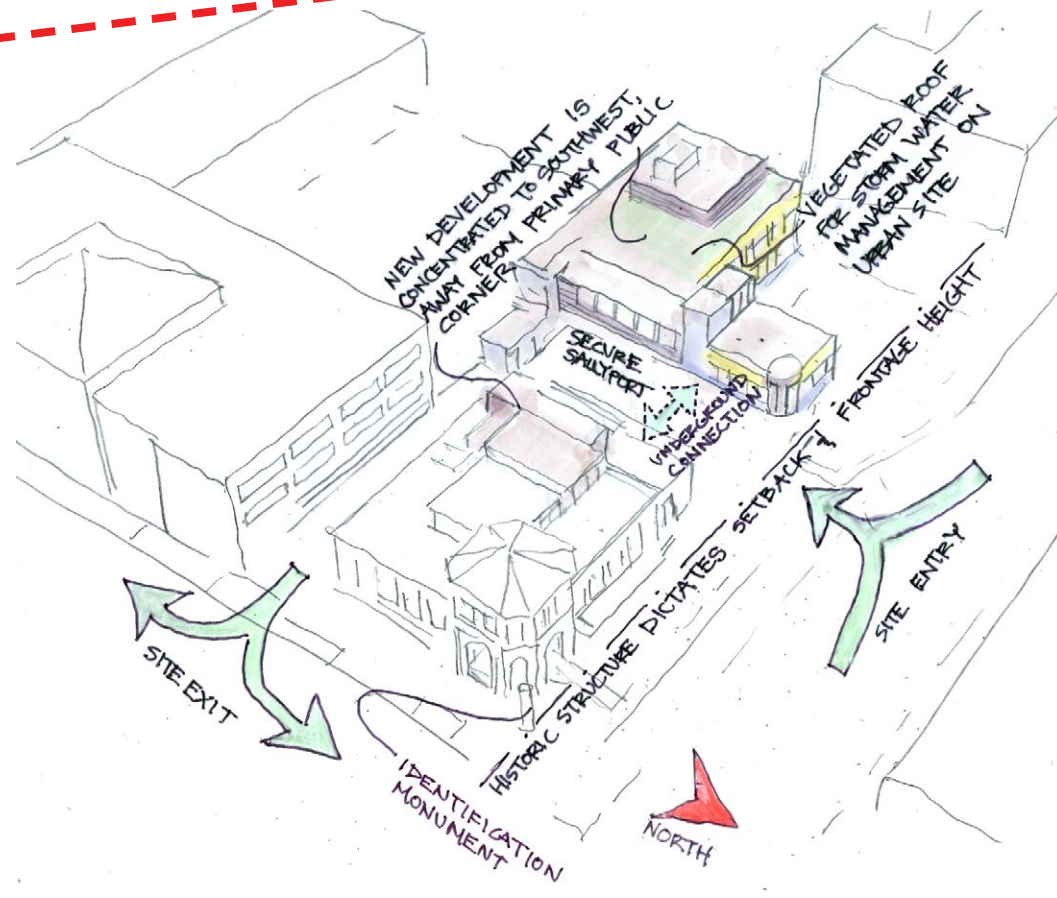
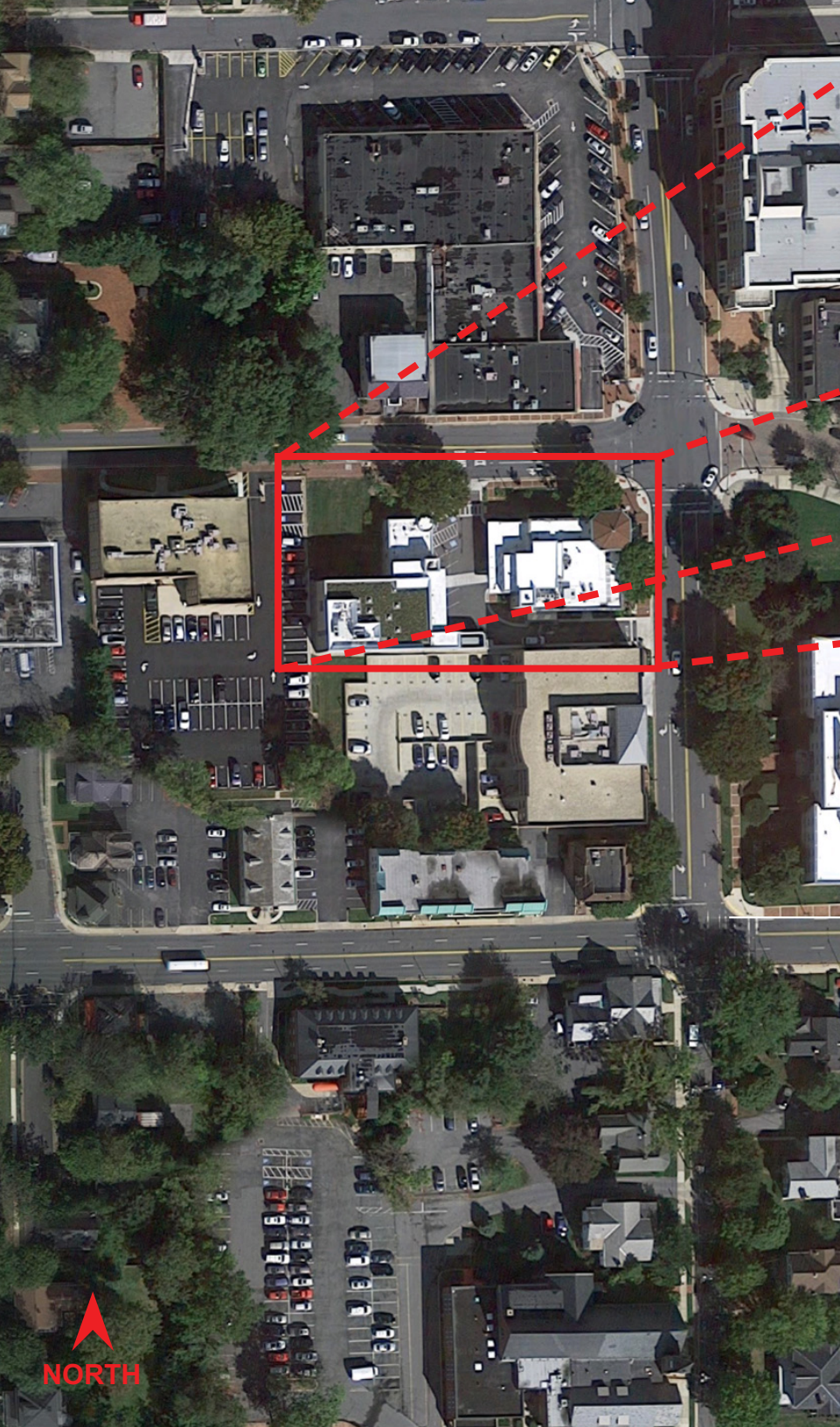
ROCKVILLE, MD

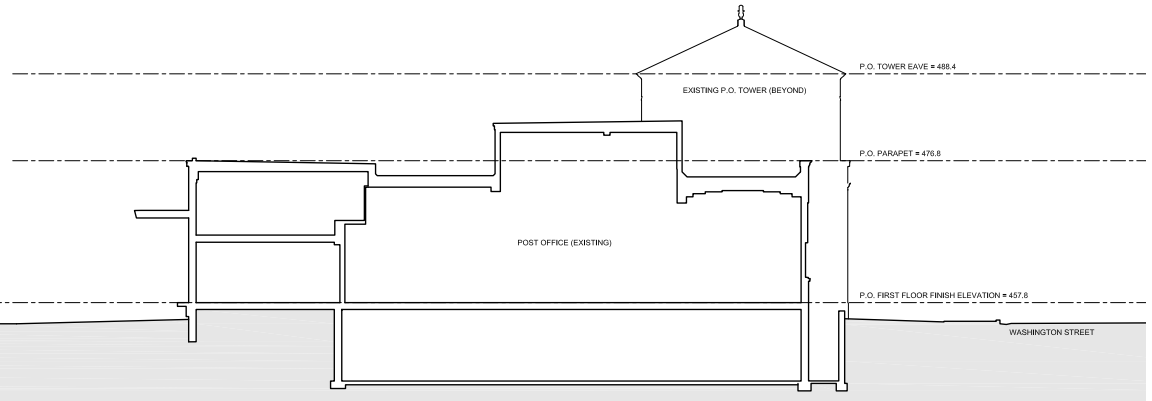
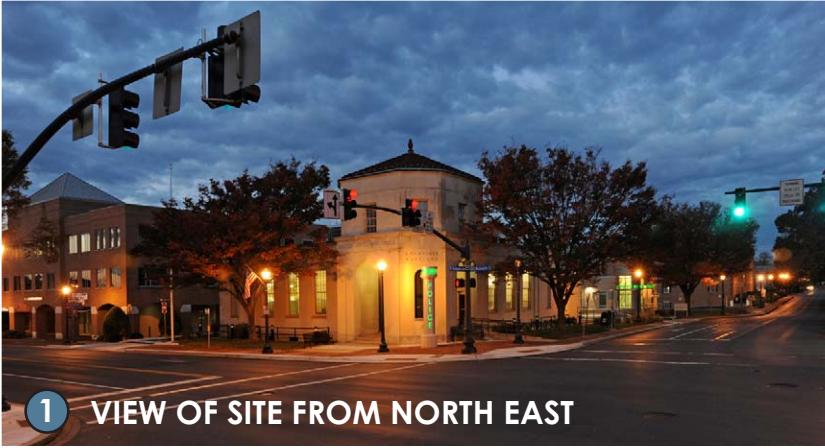
CATEGORY: INSTITUTIONAL ARCHITECTURE

reHABILITATION... The Rockville Post Office was a Works Progress Administration Project completed in 1939, which ceased full-time operations in October 2006. The City of Rockville was offered the opportunity to obtain the property from the General Services Administration (GSA) under favorable terms for a Homeland Security/Public Safety use, and moved ahead with plans to acquire, preserve and adaptively re-use the building as the new City of Rockville Police Headquarters. Two separate historic commissions had purview over the project, including the Maryland Historical Trust and the Rockville Historic District Commission. Designed under the Secretary of the Interior's Standards for Rehabilitation, the project faced the unique challenge of accommodating the over 25,000 SF police program within the roughly 9,500 SF building. To achieve this feat, a separate structure (the "Annex") was introduced on the lot and linked to the historic structure via an underground tunnel. In addition, extra square footage was added to the historic structure by enlarging the basement and introducing a new second floor under the existing high clerestory. A new elevator tower connects all three levels of the historic building, and is located at the southwest corner of the building to minimize its visual impact from the exterior.

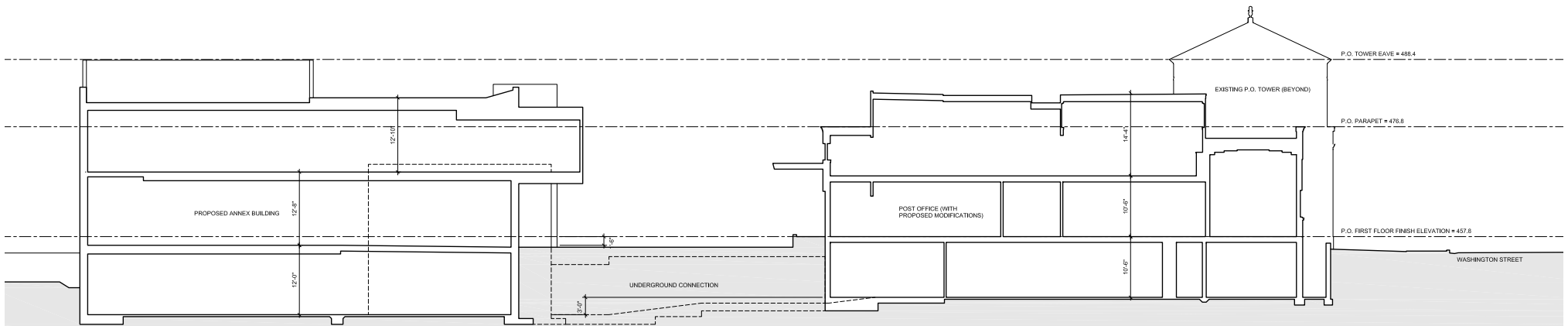
Functionally, the historic building contains many of the administrative functions of the police program, while the Annex serves as the operational (24 hour) component of the on-site police program, housing areas such as a drive-in sally port, a secured temporary holding area, a roll call space, and the 24 hour dispatch command center. High performance mechanical systems and a vegetated roof exhibit the City's commitment to sustainable development. Overall, the project seeks to celebrate and respect the importance of this treasured historic structure while introducing the space, systems, and infrastructure required to support a modern day municipal law enforcement facility.







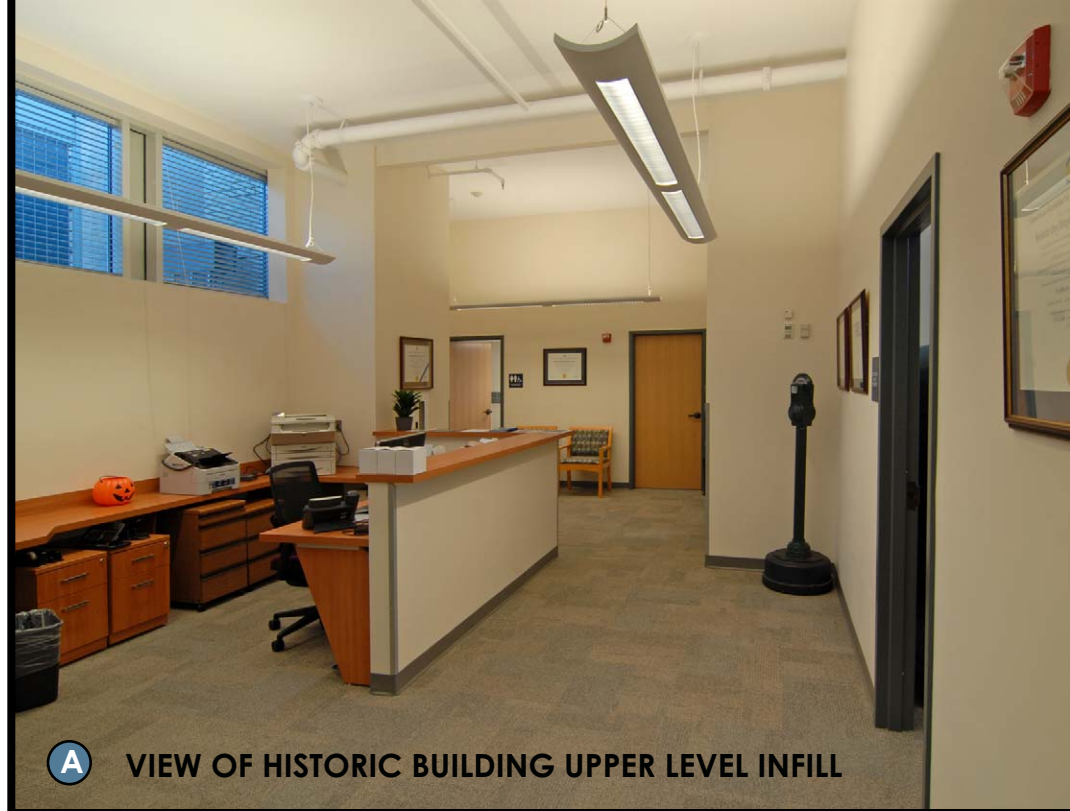
EXISTING SITE SECTION
 (Site slopes down to west; double height clerestory space provides opportunity for infill)



PROPOSED SITE SECTION
 (Historic building retains height hierarchy; underground tunnel allows functional connection)



SECOND FLOOR PLAN (Historic building)



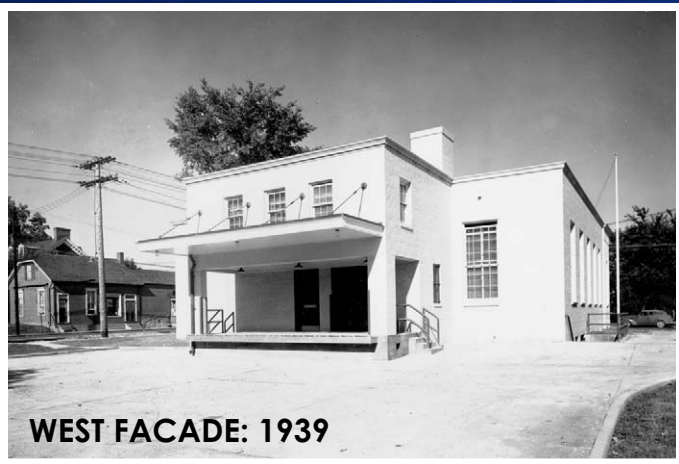
A VIEW OF HISTORIC BUILDING UPPER LEVEL INFILL



FIRST FLOOR PLAN (Historic building)



B VIEW OF HISTORIC BUILDING CONFERENCE ROOM



2

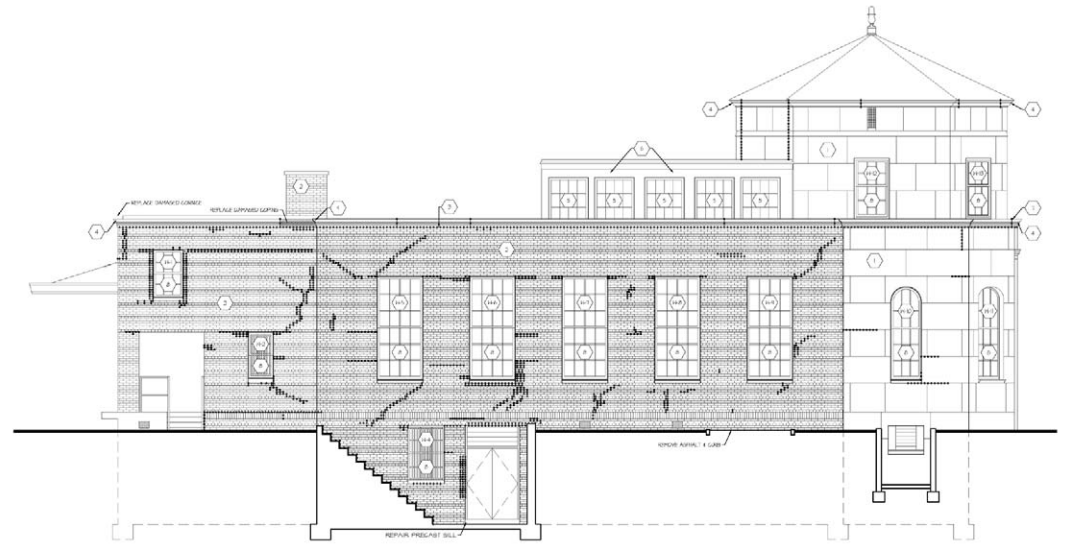
VIEW OF HISTORIC BUILDING RENOVATED WEST FACADE, INCLUDING NEW ELEVATOR TOWER



3 VIEW OF SITE ENTRY AND NEW ANNEX BUILDING



4 VIEW OF HISTORIC POST OFFICE: 1939



SOUTH ELEVATION (Indicates required masonry re-pointing)

reSTORATION... The exterior of the historic Post Office underwent a detailed and complete historic restoration effort, including re-pointing and window restoration. While the majority of the interior of the historic building was reconfigured for the contemporary police use, the existing historic lobby and entry tower were restored to their former appearance. The original mail boxes were moved back to their original location, the original finish elements (including the plaster ceiling) were restored, and historic paint analysis provided the color palette for the restoration effort. Lighting fixtures in the lobby were selected based on original construction photographs, in an effort to be consistent with the original design. The lobby remains open to the public during regular business hours so that the space and painted mural on the south wall can be enjoyed by the general public.



5 HISTORIC FACADE REPAIR: NORTH FACADE



LOBBY: 1939

C LOBBY: BEFORE



C HISTORIC POST OFFICE LOBBY: AFTER RENOVATION



reINTERPRETATION... The most distinguishing feature of the historic structure is a two story hexagonal entrance tower. This element is reinterpreted at both the Annex entry, and at the new identification monument on the corner of West Montgomery and South Washington streets (a vital piece for establishing the new identity of the structure in the public consciousness). The Annex tower respects the primacy of the original historic tower in both plan and elevation, as it is set back further from the street and is lower in height than the original.

The material palette used throughout the project also seeks to reinterpret the historic paradigm. Recognizing the four primary materials present on the exterior of the historic post office (limestone, beige brick, copper cladding, and glazing), the proposed material palette also contains four primary pieces. These consist of a 12x24 building stone, beige brick, a weathered zinc cladding, and storefront glazing. New beige brick is not incorporated into the infill and additions to the historic post office, and is reserved for use on the obviously new Annex building. The material palette seeks to differentiate the new construction on site, while harmonizing with the existing historic materials and context.

