

SUITE 250

@ the former ACME Box Company

Location: 605 South Eden Street
Suite 250

Baltimore, MD 21231

Category: Interior Architecture

605 South Eden Street is the western gateway to the Fells Point Historic District in Baltimore Maryland. The historic building is the former home of the Acme Box Company and the J.H. Dunker Packing Box Factory.

The client wanted the design to express their personal philosophy and reflect how they approach business with attention to detail and appreciation for unique solutions while taking advantage of and respecting the existing assets and location.

The concept for the new 3,000 SF office space was inspired from the industrial products that were manufactured here by hand for over 100 years. The existing timber frame structure within the brick masonry shell of the building is the organizing framework for the new office space that was then divided by a series of staked timber and acrylic walls that are reminiscent of the wood crates that were manufactured here. The acrylic spacers give privacy to the walls while allowing light and shadows to pass through much like the wood crates. As sunlight passes from east to west over the windows and skylights natural light transform the walls and bring them to life. The acrylic glows and changes throughout the day and night giving the occupants a sense of the time of day and changes with the seasons and weather.

Recycling and repurposing existing assets are an integral part of this client's business practice and are highlighted throughout the project.

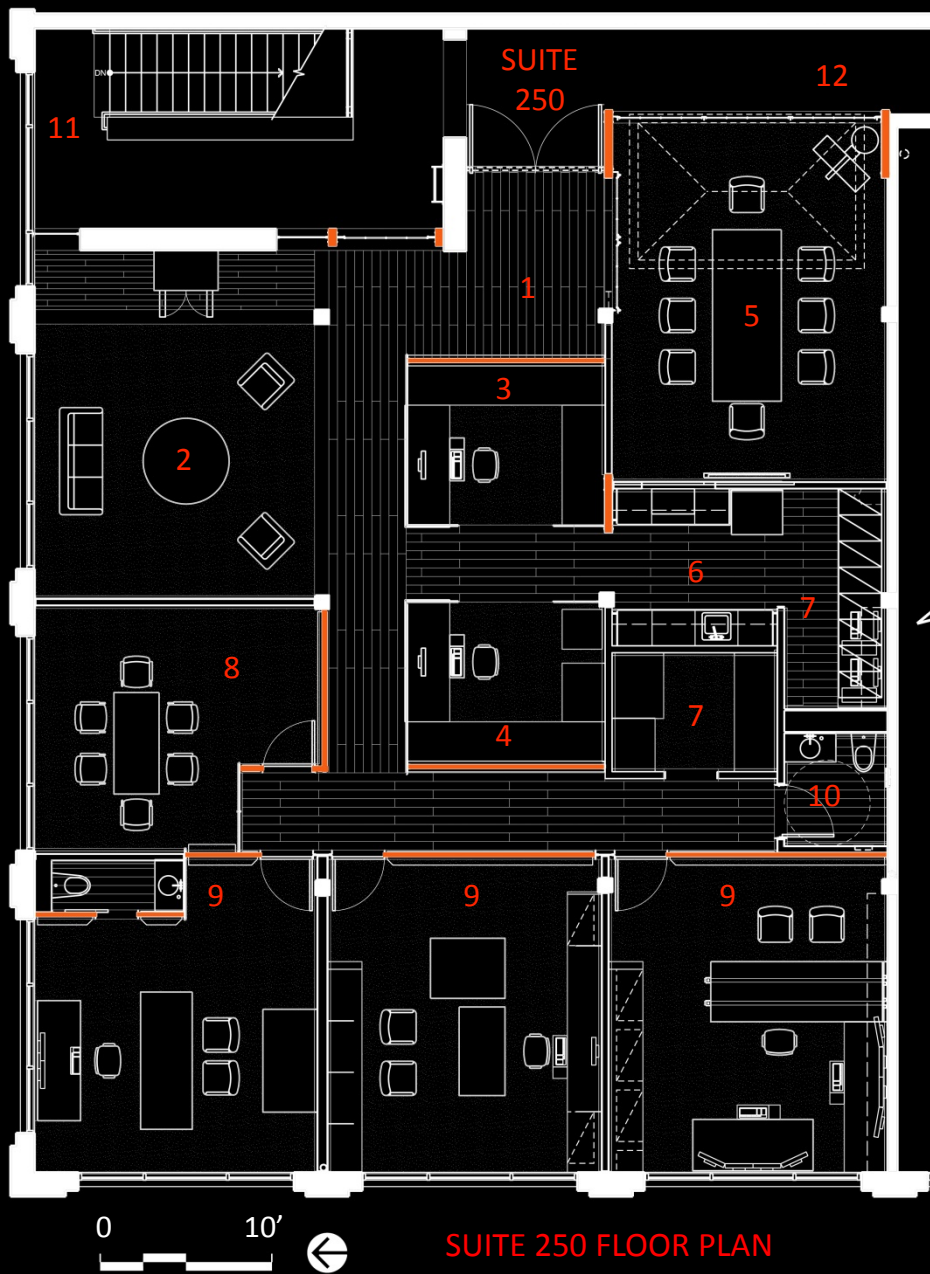


The interior of the building is brick masonry shell with heart pine timber structure which was covered with a hundred years of soot from a wood burning boiler which powered the machinery, lights and heated the building. The existing materials were soda blasted to expose the very rich heart pine columns, beams, joists, and roof deck and brick which also revealed a variety of brick types and old window openings. Years of paint were stripped off the industrial steel windows to expose the rich steel and details and were repurposed for interior walls and doors. Industrial skylights and vents were opened and re-glazed allowing natural light to flood the space again.



The repurposed industrial steel windows were left natural and glazed with historic marine glass. Heart pine shows over one hundred years of character.





SUITE 250 FLOOR PLAN

- | | |
|--------------------------|-----------------|
| 1. Lobby | 6. File Room |
| 2. Waiting/Meeting | 7. Meeting Room |
| 3. Reception Workstation | 8. Office |
| 4. Workstation | 9. Restroom |
| 5. Conference Room | 11. Stair |
| 6. Kitchenette | 12. Corridor |



OFFICE WALL

Stacked timber and acrylic are framed with cold rolled angle and plate steel (highlighted on plan). The acrylic allows light to pass through the wall while allowing privacy. The acrylic cantilevers on the inside of the office providing shelving. The wall assembly is reminiscent of the wood crates manufactured at this location for 100 years.

Industrial pendant light fixtures hung in a grid pattern provide accent and organization to the office space and provide general illumination, task specific lighting, as well as setting an energetic glow from the sunset red color.



Blown glass door pulls and finials on the monumental 11' tall cold rolled steel plate doors at the entry accentuate the handmade character as you enter Suite 250.

ENTRY & RECEPTION



Salvaged boiler door has been repurposed as a feature table and is back dropped by cold rolled steel plate wall and rusted steel walls of the workstations.



LOBBY

Original safe from the ACME Box Company now serves as an entertainment center and bar.



ENTRY & CONFERENCE ROOM

Cold rolled steel plank floors define the circulation path through the space and is in contrast to the carpeted spaces. Industrial steel windows have been repurposed as a rolling door to provide privacy in the conference room.



CONFERENCE ROOM

Steam operated drill press now serves as a focal point in front of repurposed operable industrial steel windows with marine glass that provide view to the public corridor beyond where you can see the outlines of windows long ago closed in the perimeter brick wall. The marine glass provides a subtle level of privacy between the suite and the public corridor. Industrial windows are also repurposed as a rolling door to the conference room. Salvaged wood beams connected by a steel tie rod have been repurposed to create a conference table.

Lobby and reception are separated from the public corridor with a combination repurposed industrial steel windows framed by stacked timber and acrylic columns.



LOBBY

Repurposed rolling fire door and skylight vents activate the corridor and stair lobby.



CORRIDOR AND WAITING BEYOND



WORKSTATION & CORRIDOR EAST



WORKSTATION & CORRIDOR WEST



WORKSTATION

Workstations are enclosed with vertical rusted steel planes that allow the acrylic work surface to penetrate through the steel. Stacked timber and acrylic are topped with a salvaged timber transaction ledge.



PRIVATE OFFICE



SUSPENDED OFFICE DESK

Private offices are organized by the heart pine column grid and line the west side of the building featuring views of Harbor East in Baltimore. Stacked timber and acrylic walls give the offices privacy while allowing the daylight to bring the timber wall to life as the sun passes over the building during the day. This office features a suspended desk that hangs a pair of salvaged heart pine timbers from tie rods with salvaged hardware from the building.