

# 7001 ARLINGTON ROAD

BETHESDA, MARYLAND

## RESIDENTIAL ARCHITECTURE



Located in Bethesda and overlooking the Capital Crescent Trail, the project consists of a five-story apartment building enveloped by triangular landscaped courtyards, set atop an underground garage. The site is flanked by dense commercial properties, so the vision was to create an "urban retreat" for the residents, and provide almost one acre of private open space in the downtown core.

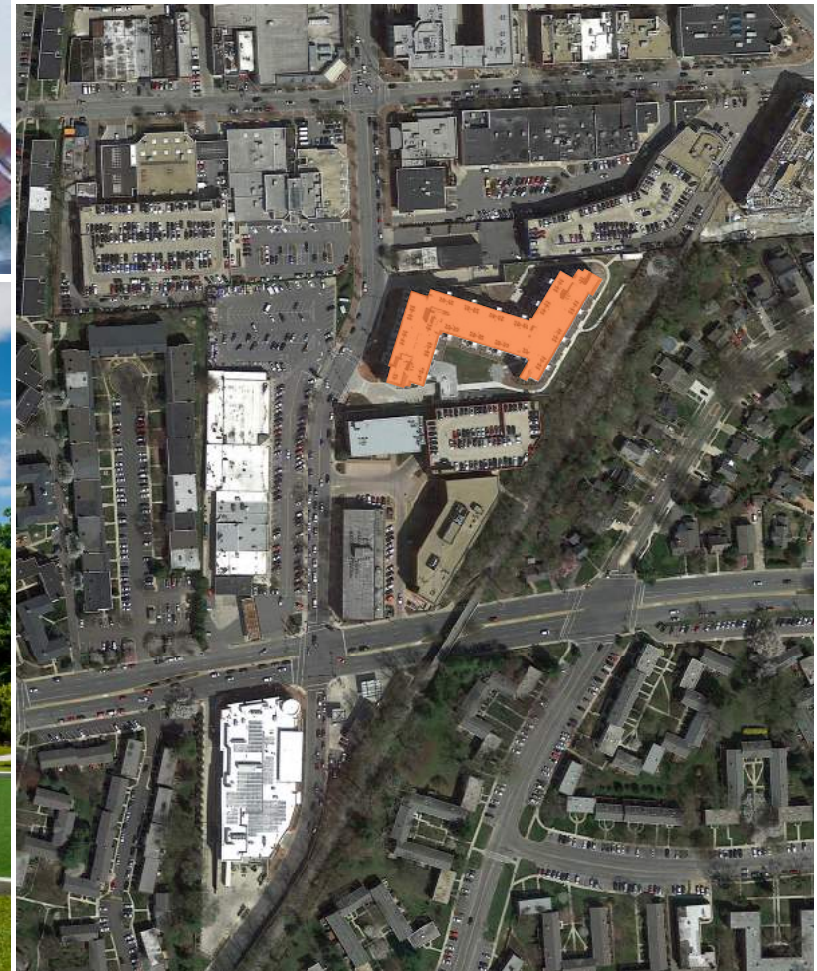
Natural grade change from the Capital Crescent Trail down to Arlington Road allowed the one-level garage to be built into the slope, creating landscaped podium. The building is set back 60' from the rear lot line to create a serene "backyard" for residents and create a gradual transition between urban and suburban residential neighborhood on the other side of the trail.

With the long narrow site and four-story form, the building form is inherently horizontal. In order to break up the long lines, the design composed the functional unit mechanical closets, bio-filters and balconies, located on the perimeter of the units, into simple vertical armatures.

2016 DESIGN AWARDS  
AIA MARYLAND CHAPTER

# THE "Z" FACTOR

7001 Arlington Road is an important buffer property between urban and suburban Bethesda, using setbacks and design to respond to the language it faces



COURTYARD

7001 Arlington Road engages the street from the southwest, with first level retail and main lobby.



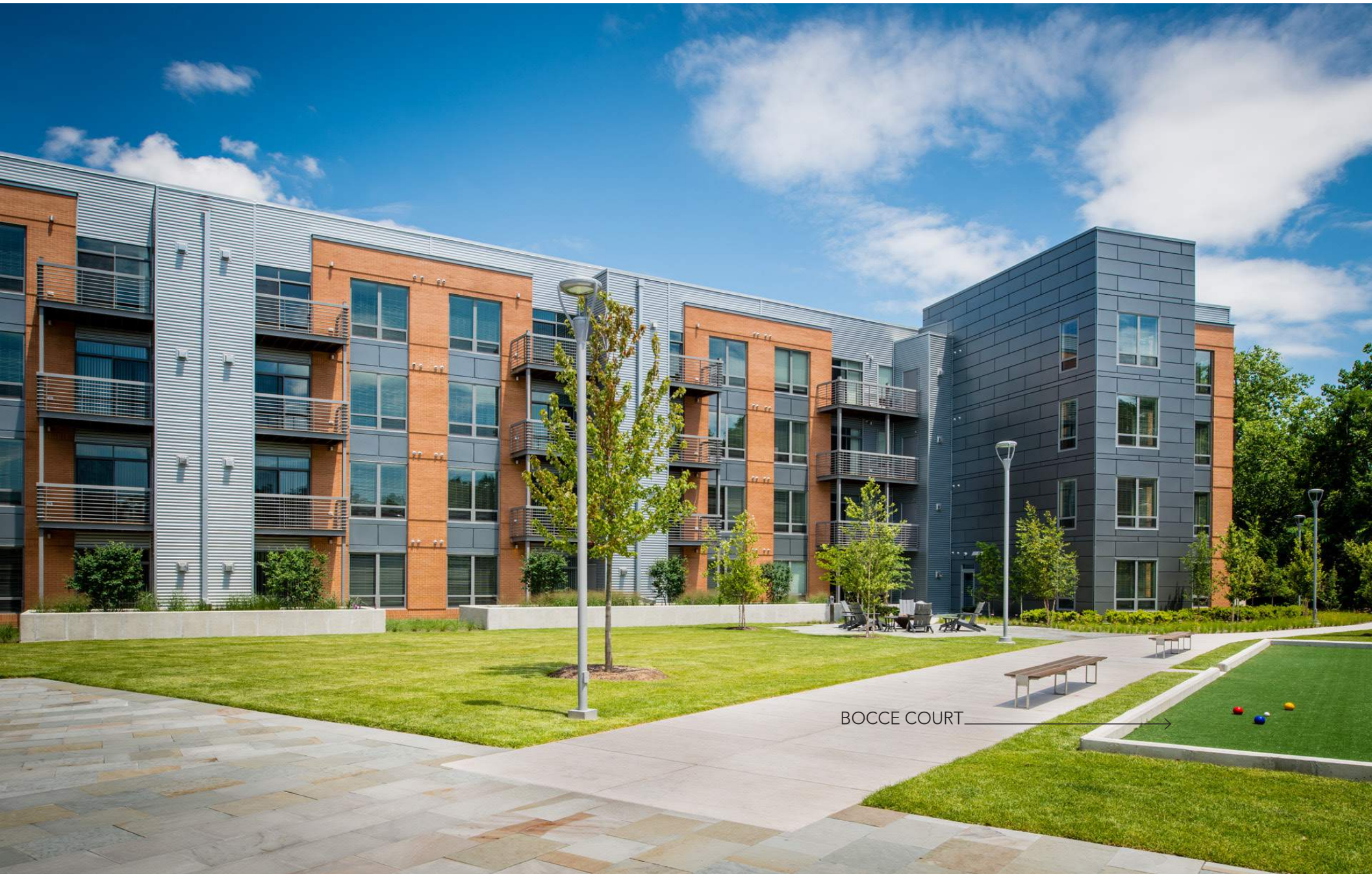
Triangular court's create a garden setting in an urban area.



TRIANGULAR COURTYARD

2016 DESIGN AWARDS  
AIA MARYLAND CHAPTER

Amenities can bring neighbors out to connect and provide respite from the dynamic downtown environment



TRIANGULAR COURTYARD

2016 DESIGN AWARDS  
AIA MARYLAND CHAPTER

Large balconies overlook the "rear yard" on the Capital Crescent Trail



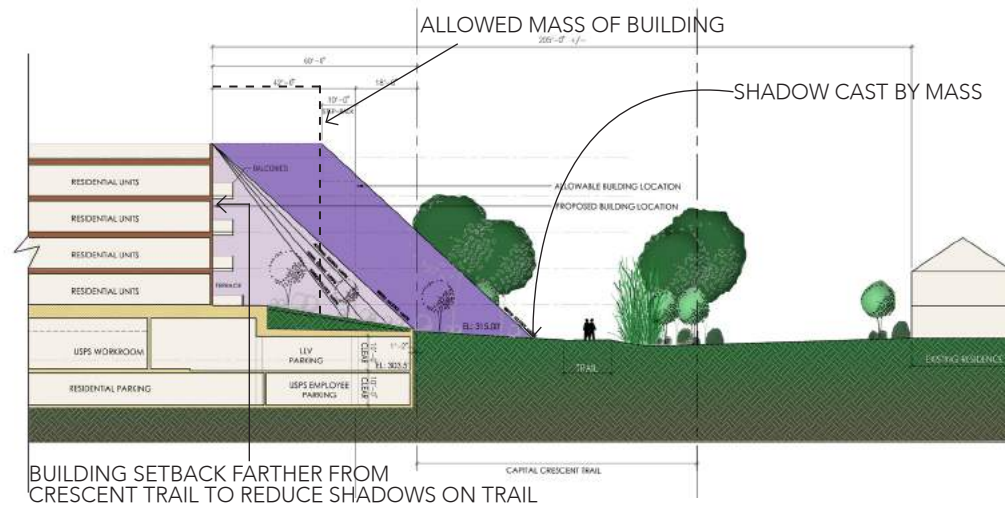


BIOFILTER PLANTER

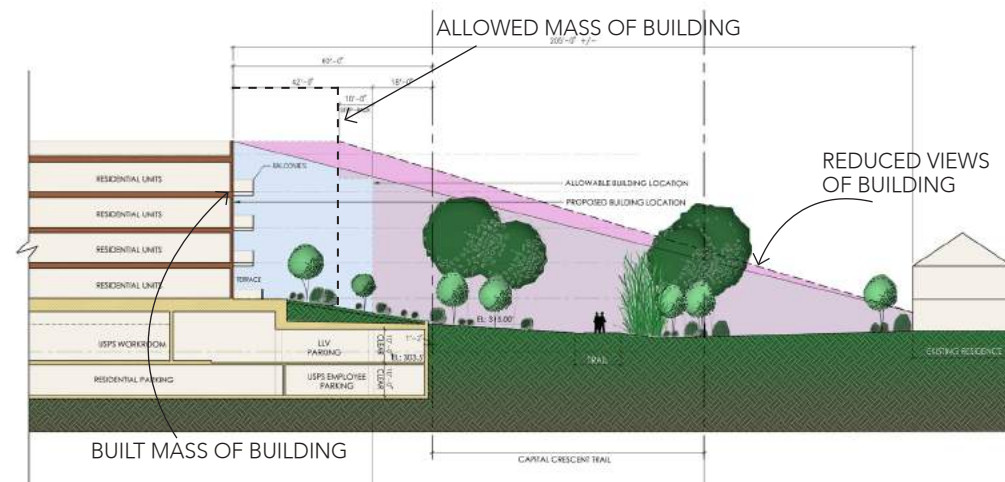
## MASSING

Massing and shadow studies, coupled with extra setbacks, help transition between downtown Bethesda and the single-family homes behind

## SHADOW STUDY



## VIEWS FROM THE NEIGHBORHOOD

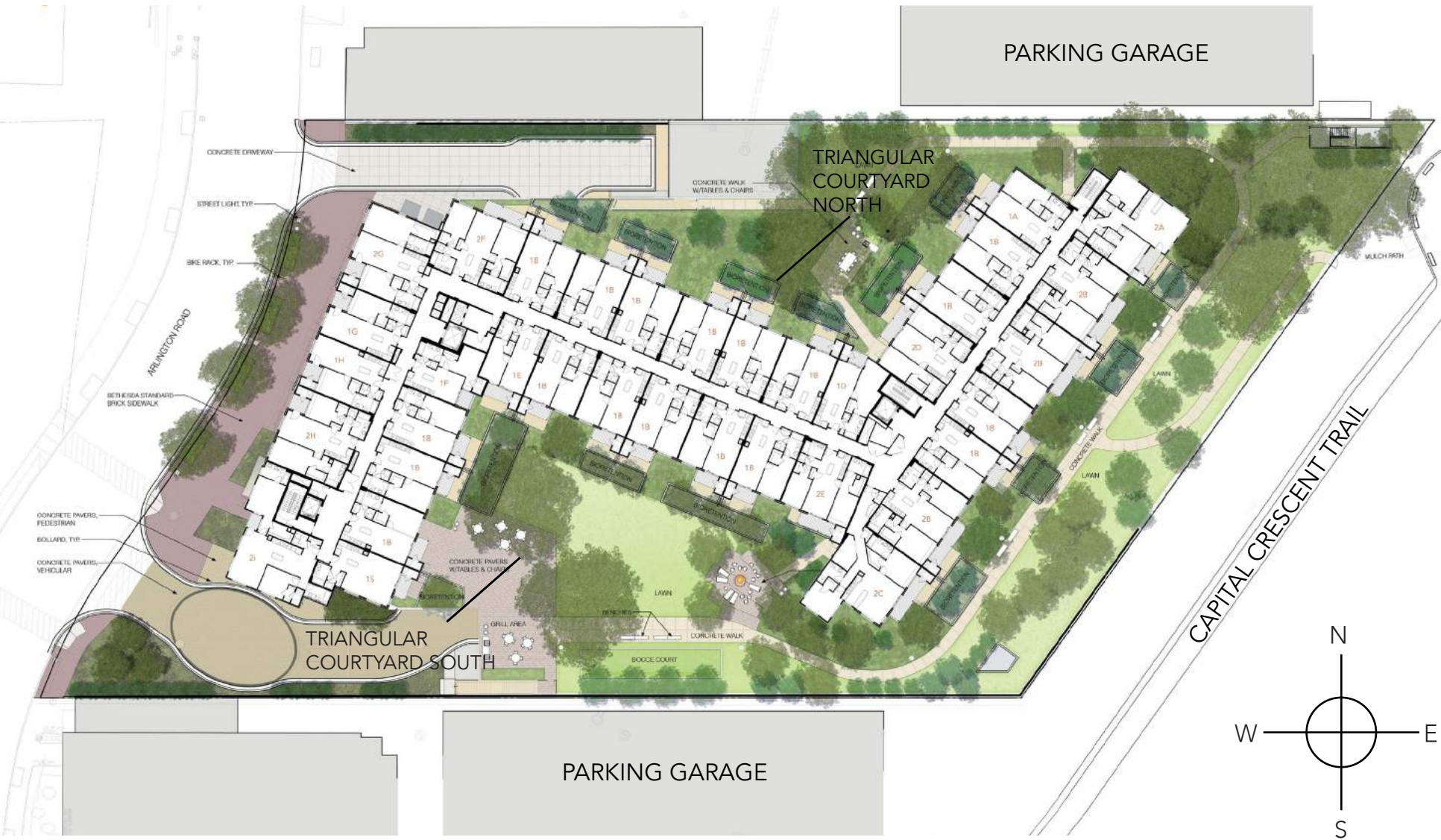


Functional components including perimeter mechanical closets, bio-filter downspout system and balconies are composed to create a vertical rhythm





# BUILDING PLAN





SELECTED MATERIALS



WOOD SIDING

COLOR: EMPIRE  
(7001 BAY)



BRICK

COLOR: EMPIRE  
(BRICK BAYS)



RIBBED METAL PANELS  
(8" HIGH)

COLOR: CHAMPAGNE GOLD  
(MECHANICAL  
UNITS + PARAPET)



ZINC METAL PANELS  
(24" HIGH)

COLOR: QUARTER-ZINC  
(CORNER VOLUMES)



CAST STONE

COLOR: WHITE  
(RETAIL)