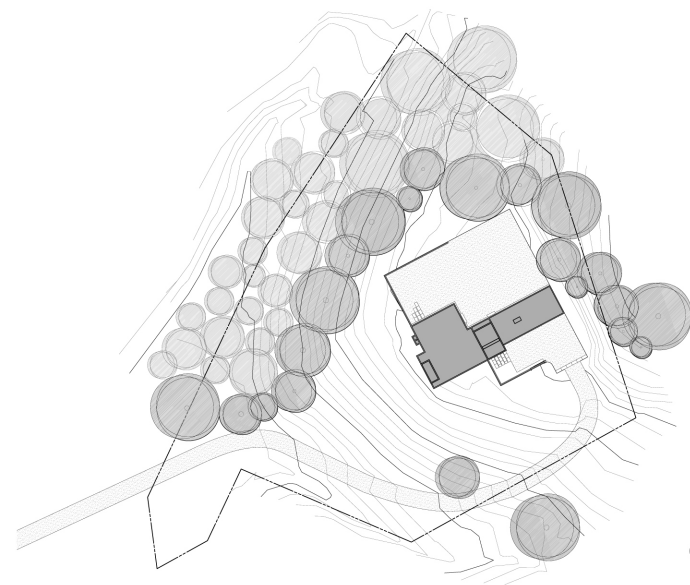




MOHICAN HILLS HOUSE

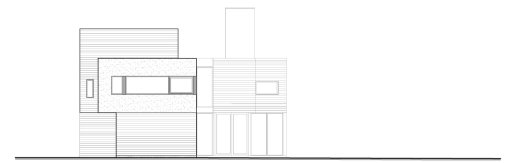
BETHESDA, MD | RESIDENTIAL ARCHITECTURE



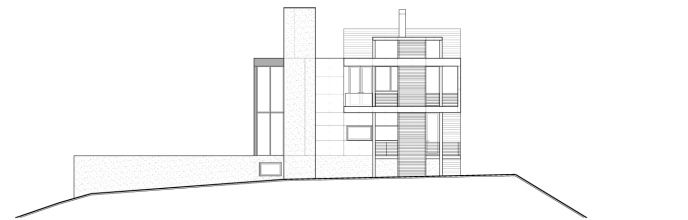
⌚ SITE PLAN
0 25 50

Mohican Hills is a small community in Glen Echo, Maryland close to Washington, DC, adjacent to the Potomac River. This community boasts an unusually high percentage of contemporary and mid-century modern houses relative to most Washington, DC suburban neighborhoods. This new house is positioned along the ridge of a sloping site and oriented toward distant river views. A linear composition of spaces arranged along the ridge and open to an existing clearing provides a large lawn with minimal site intrusion and preserves the vast majority of mature trees. The house is organized around a two-story living space with an open floor plan that integrates a high-ceilinged volume with intimate spaces adjacent to the double height space. A small office on the first floor is separated from the living spaces and is convertible to a fifth bedroom. A three story entry volume separates the master bedroom area from the subsidiary bedrooms. Expanses of glass provide views into the wooded landscape toward the distant river and animate the house with light. A combination intersecting spaces insure light penetration all times of day and all times of the year. This house employs a dark stained concrete slab throughout the main floor which provides passive solar energy assistance. Energy efficient appliances, wall and ceiling infrastructure with maximum insulation, and a ventilated building envelope are employed with the expectation of reducing fossil fuel consumption. Large operable windows and doors are located to provide natural ventilation and direct access to the outdoors.





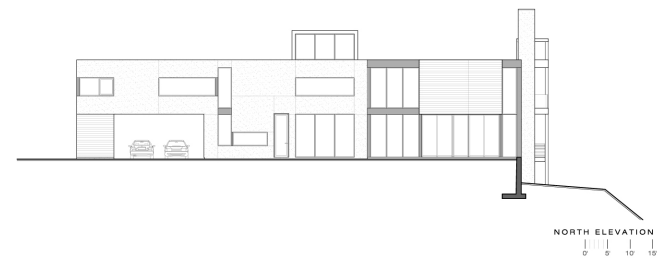
EAST ELEVATION
0' 5' 10' 15'



WEST ELEVATION
0' 5' 10' 15'



SOUTH ELEVATION
0' 5' 10' 15'



NORTH ELEVATION
0' 5' 10' 15'

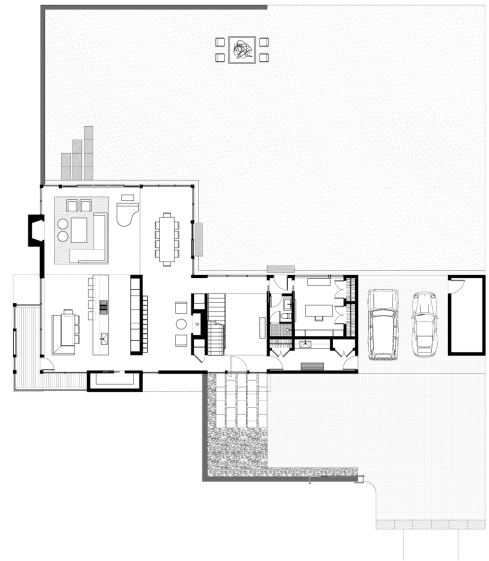








SECOND FLOOR PLAN
0 5 10 15



FIRST FLOOR PLAN
0 5 10 15





