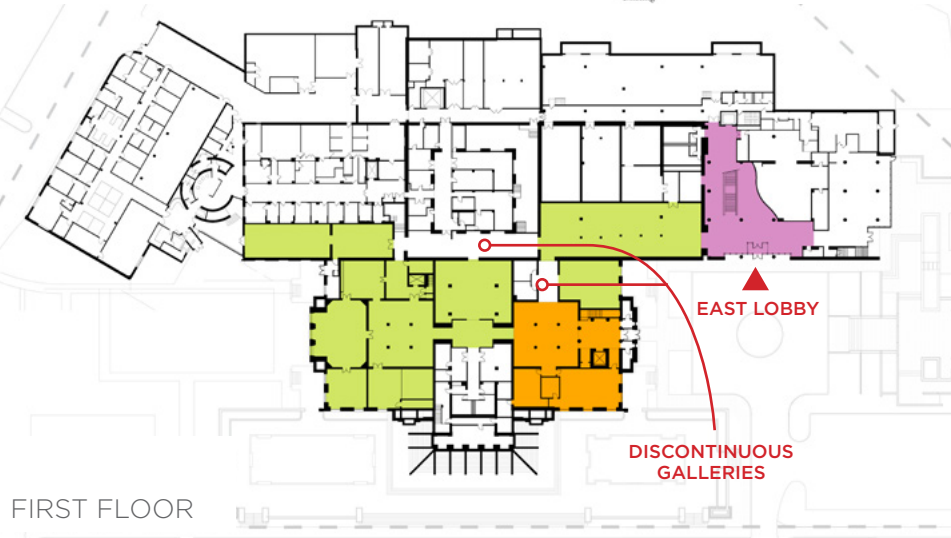
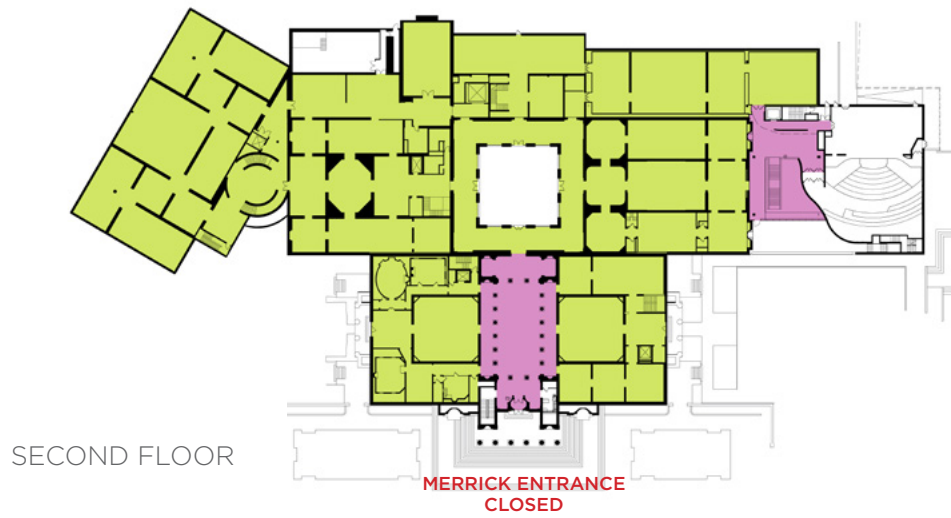




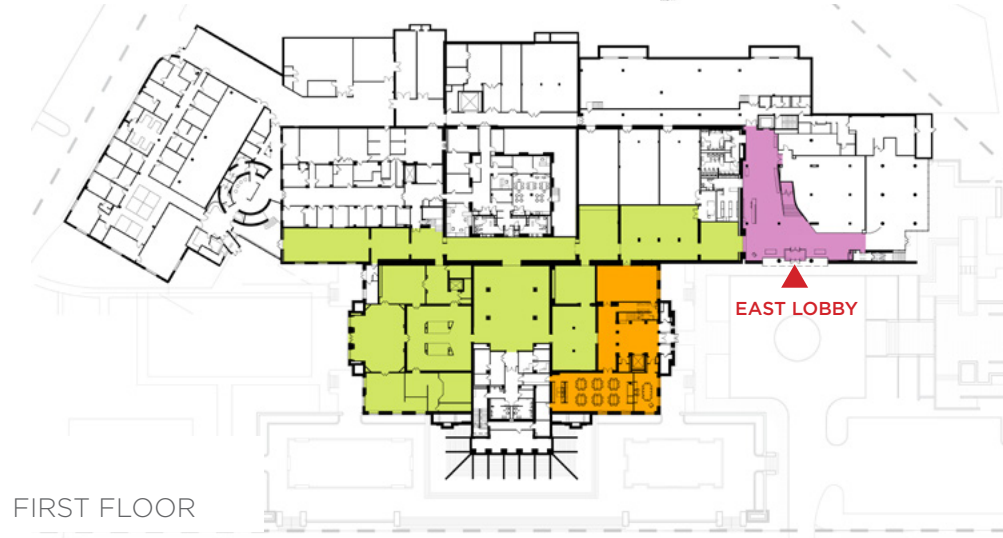
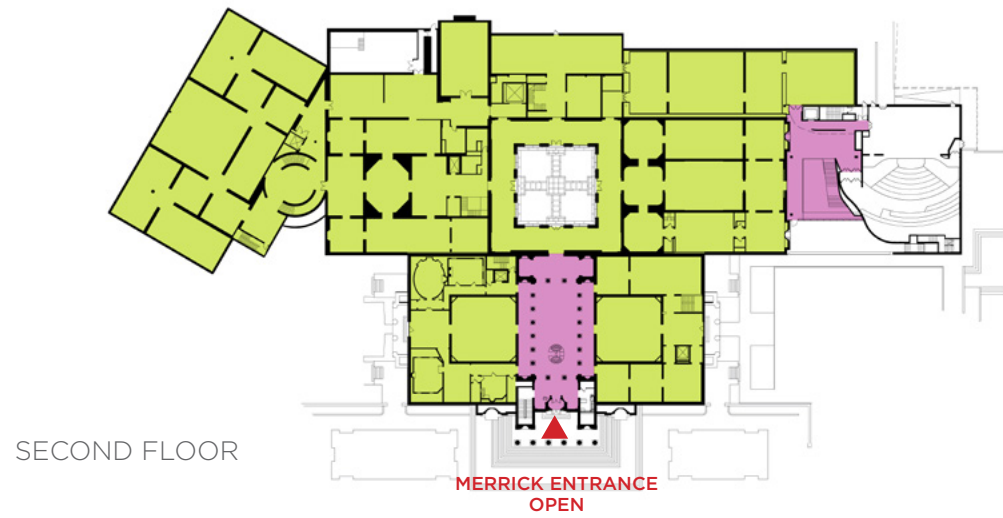
BALTIMORE MUSEUM OF ART MAJOR RENOVATIONS

BALTIMORE, MARYLAND
INSTITUTIONAL

The BMA embarked on a three-year phased capital renovation, completed in conjunction with the 100th anniversary, to improve the visitor's experience, upgrade and modernize the aging infrastructure, and reconfigure behind-the-scenes work areas to support the Museum's service to the community. The historic Merrick entry of the John Russel Pope building is reopened and improved mechanical systems maintain the conservation environment within. The American Galleries are reorganized with new materials and lighting that respond to the original Pope Galleries. A complete re-design of the East Lobby transforms the visitor's experience. Reconfiguration of the First Floor references Pope's gallery design on the Second Floor and introduces galleries that establish order with new axial relationships, raised ceilings, clarified proportions, and refreshed gallery spaces for BMA's treasured collections of African and Asian Art.



BEFORE



AFTER

CLARIFY & ENHANCE THE VISITOR EXPERIENCE

The design process was informed by a larger effort to open up the museum both literally and figuratively to become a true cultural and community resource. In support of this, one of the main goals was to clarify and enhance the visitor experience. Re-opening of the main entrance, complete transformation of the East Lobby, and reorganization of galleries allow for a continuous all gallery experience with appropriate space or visitor orientation.



Just inside the re-opened Merrick Entry, the historic Fox Court is restored with new lighting and discretely integrated life safety systems, and incorporates visitor services for the first time in decades.

The American Galleries are reorganized and completely renovated with new materials, details and proportions that respond to the original Pope Galleries.



Before Renovation



The reinstated American Wing galleries showcase the impact of maximized ceiling heights and new lighting. Concealed sprinklers and life safety systems are integrated throughout the renovated spaces.



Before Renovation



The new Africa Gallery is relocated to be on axis with the main entrance above, and is now at the same scale as Fox Court. The new galleries introduce rich materials and the same attention to detail of the main level galleries with careful attention to maximize the ceiling height and impact of new lighting.



A complete re-design of the East Lobby transforms the visitor's experience beginning with a new entry vestibule, canopy, signage, and integration of sculpture into the improved site.



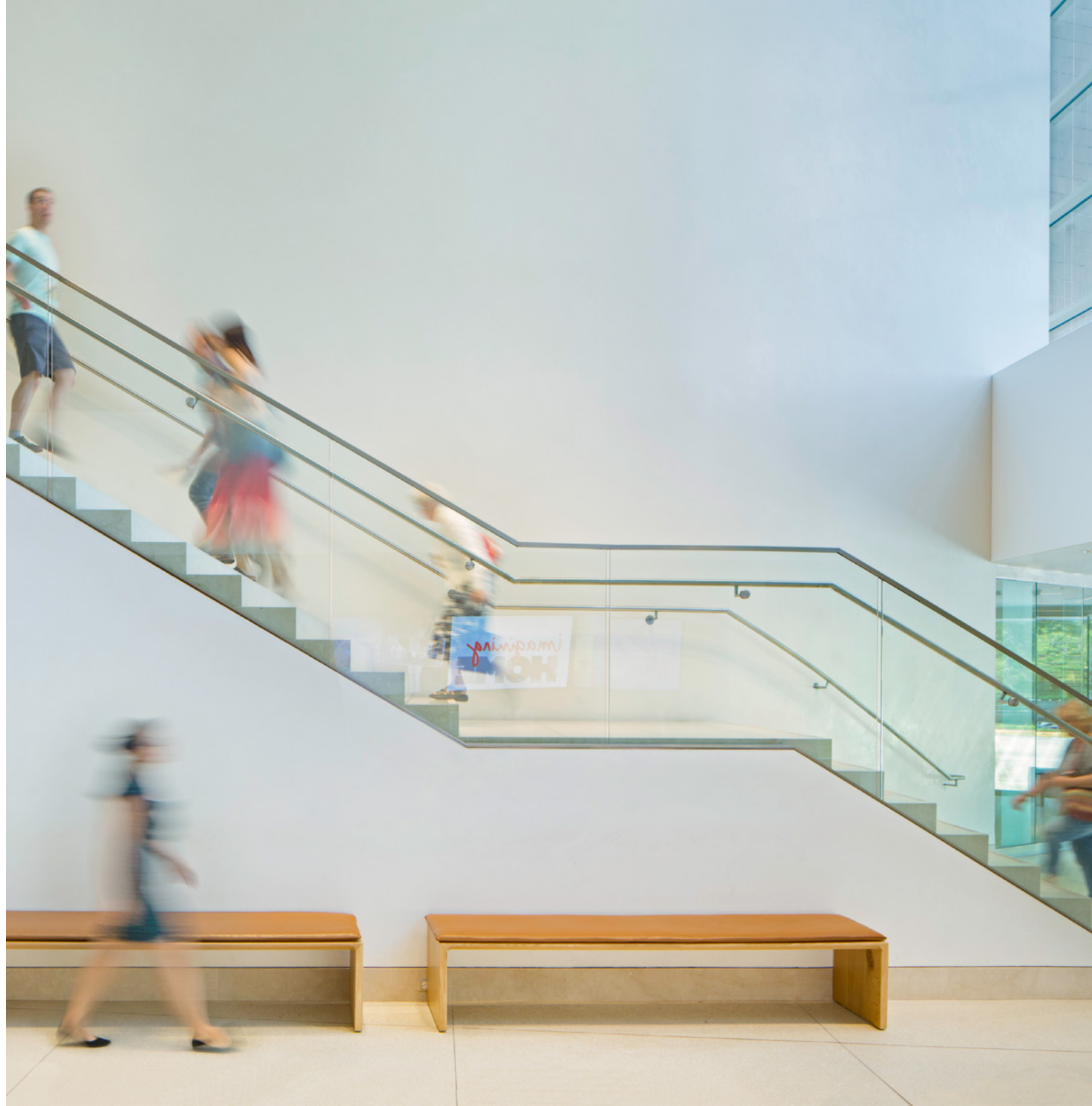


Before Renovation



Before Renovation

The new East Lobby welcomes visitors into a large contiguous space. The main stair, which previously bisected the space, is relocated to the east and guides the visitor towards the art. The new curved venetian plaster wall softens the space with a welcoming form and a distilled material palette.



The interior finishes introduce a material palette that is contemporary, refined and elegant, while at the same time durable and timeless.



Before Renovation



MURRAY
TERRACE

EMERSON
EXIT

BECKA AND MARY
EDKATY

Level 2
Care Collection
Modern Art
BMA Shop



The historic Merrick entry is reopened, allowing visitors to experience the museum the way John Russell Pope intended.