



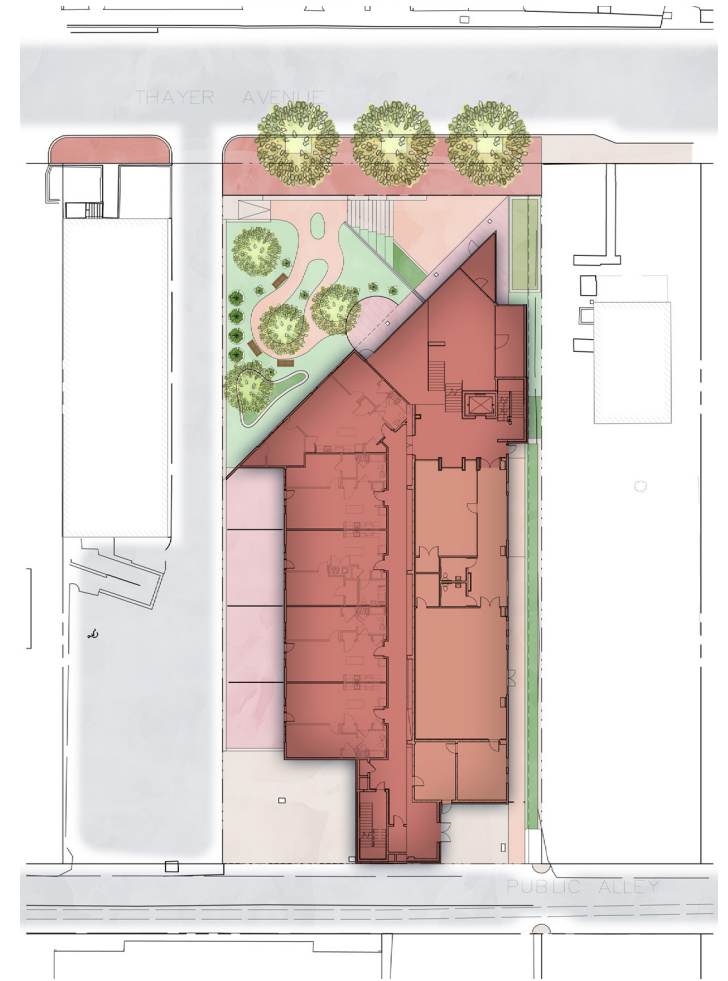
THE RESIDENCES AT THAYER AVENUE

SILVER SPRING, MD - RESIDENTIAL ARCHITECTURE

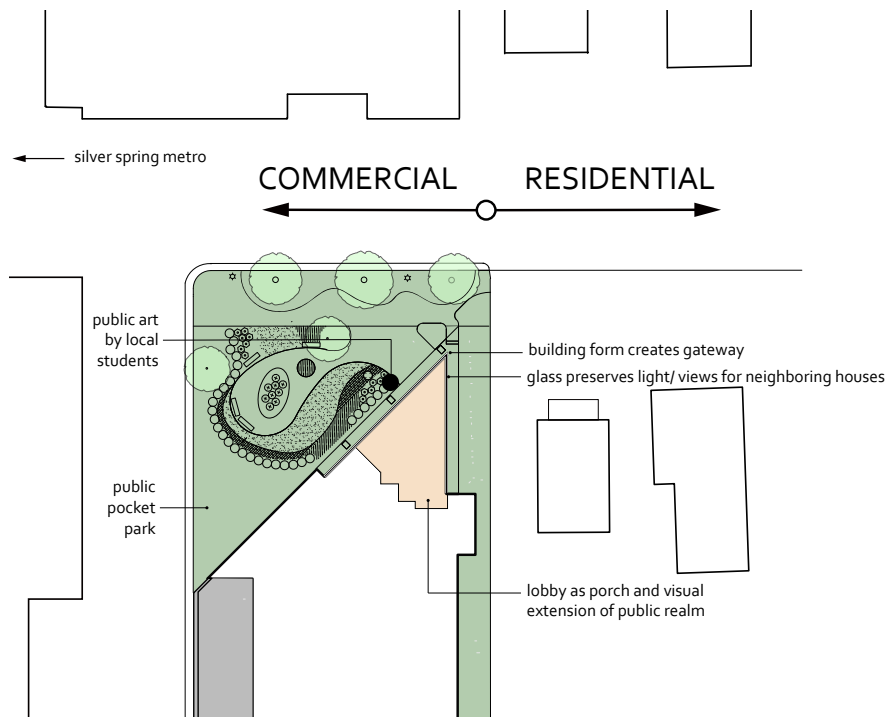
The Residences at Thayer combines 42 moderately-priced dwelling units with 10 market-rate units. The design driver was the gateway location at the transition from a single-family residential community to the commercial district of Silver Spring, and the zoning requirement for public space. A prow cantilevers out to demarcate the edge of the commercial district, while bringing afternoon sunlight into the newly-defined public park. The steep prow and the pocket park create a counterpoint to the massive and tall apartment building across the street. The public face of the building is defined by a double-height band that floats above the line of sight as grade drops; thus the neighbor's views are not obstructed and the entrance to the building feels light and airy. The project is LEED for Homes Silver, and includes a green roof and two bioretention basins. This project creates metro-accessible affordable housing in walking distance to jobs, shopping, cultural facilities, the new Silver Spring Library, and the forthcoming Purple Line.

*Photography throughout by
EricTaylorPhoto.com*



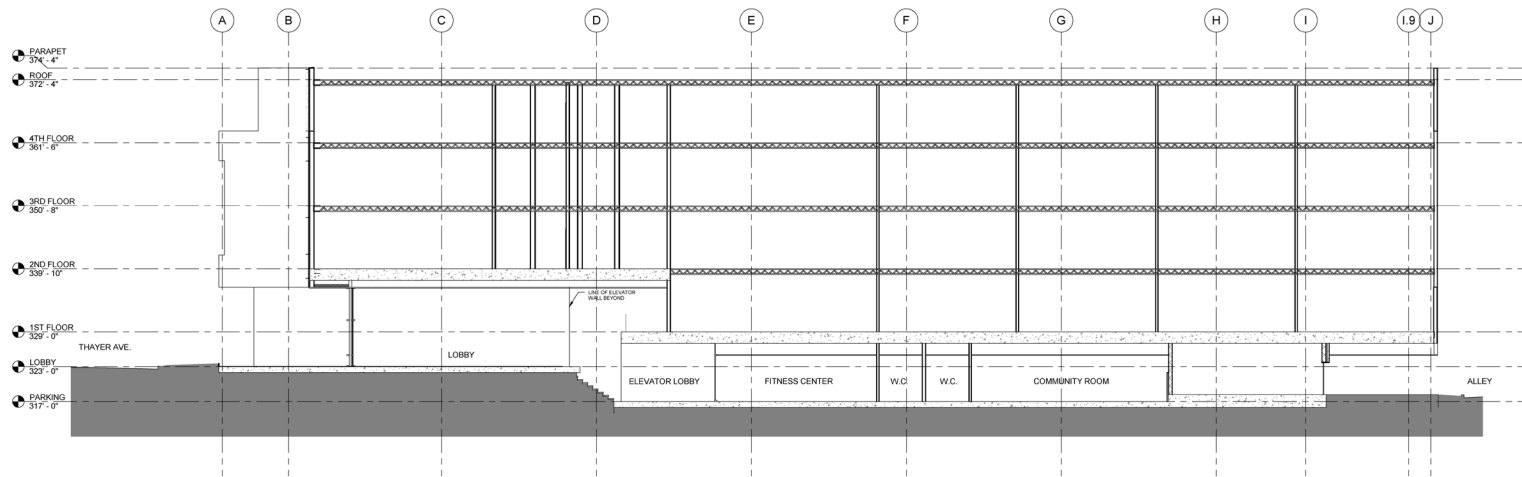


Adjacent to the Central Business District of Silver Spring and two blocks from the Metro and bus lines, the Residences at Thayer provides easy access to jobs and transportation. The project serves as a gateway between the residential and commercial districts of Silver Spring, Maryland. The public pocket park on the site provides relief from neighboring buildings as well as a community space for recreation.

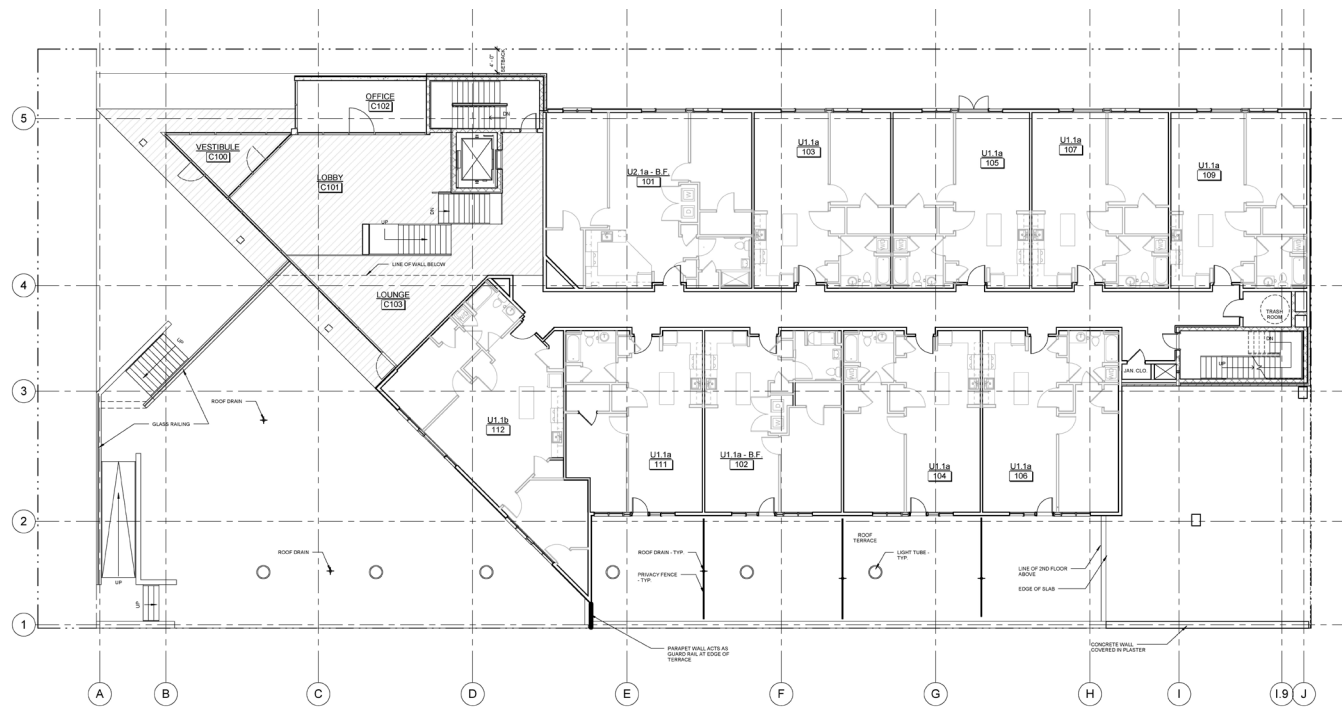


A rotating public art program was developed in cooperation with the sculpture program at nearby Cafritz Arts Center at Montgomery College. Each year, one piece will be selected by the College for display in the park space in front of the building.





BUILDING SECTION



FIRST FLOOR PLAN



AMENITY SPACES

- lobby
- community room
- fitness center
- e-lounge

