

Tilt wall construction has a capacity to instigate and sustain investigation of **TRANSFORMATIVE** modalities marks its difference in potential from competing value oriented building technologies. Balancing **HIGH DESIGN** and **TECHNICAL INNOVATION** with form driven construction is unique to tilt wall. The depth of this potential is evident in the recent design for the 5801 URC Office Building located adjacent to the University of Maryland main campus in College Park Maryland.

The University Of Maryland Research Park, is a dynamic location for science and technology companies. Adjacent to the University of Maryland, ranked among the nation's top 20 public research universities, and located just 8 miles from the Nation's Capital, 5801 URC will offer **Flexible Space Locations** in what will be Maryland's **LARGEST RESEARCH PARK**, from incubator space for startup companies to build to suit options for larger technology clients. The park's location serves to physically and programmatically link university researchers, students and staff with federal laboratories and private sector companies.

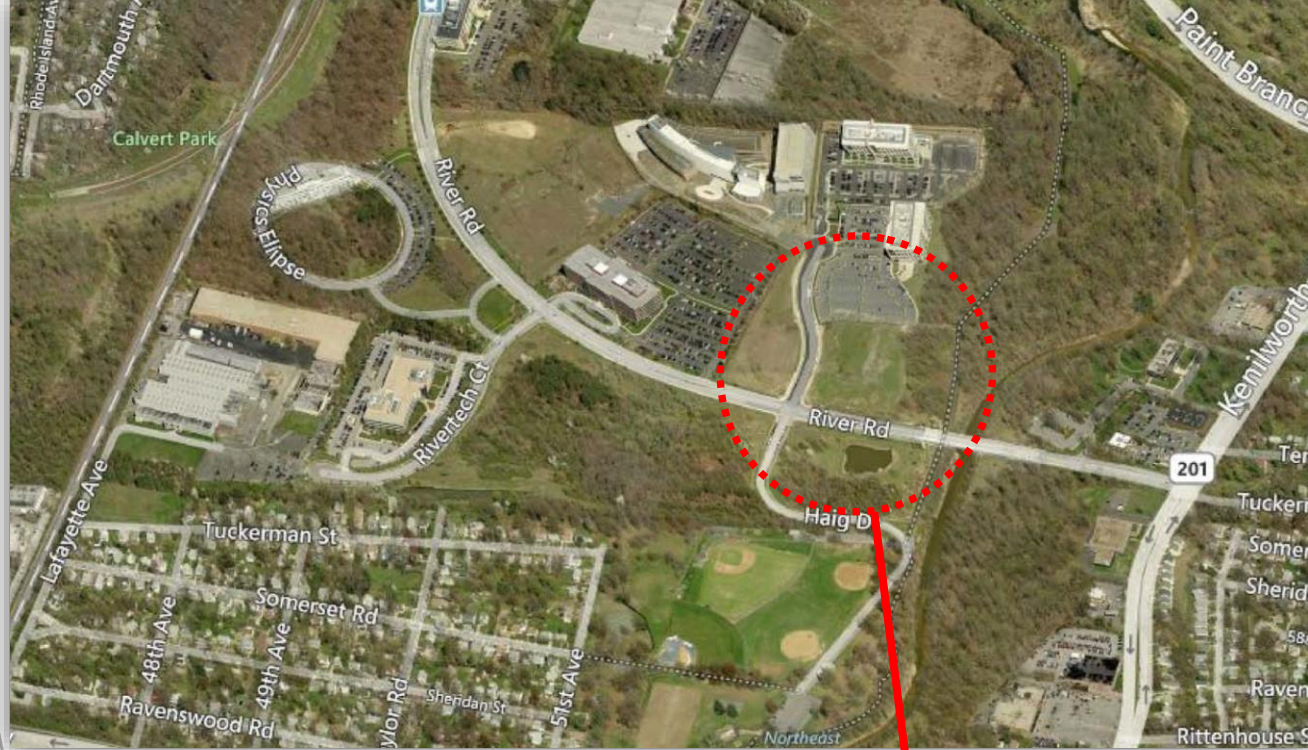
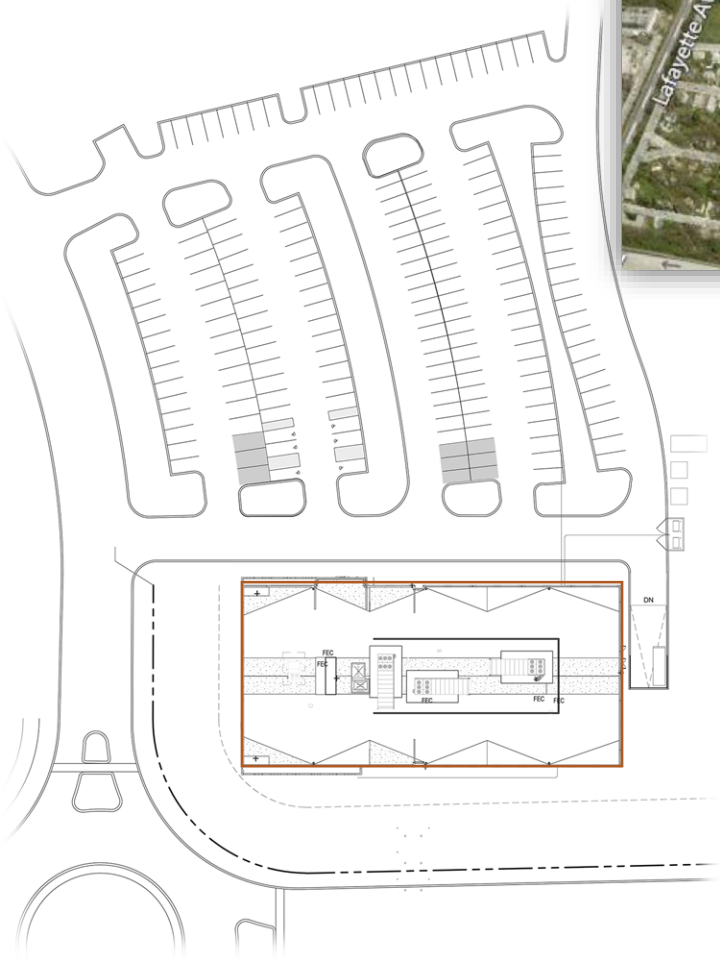
5801 URC Office Building is a 3 story, 75,046 sq. ft. office building. The buildings design for primary entry and western elevation responds to a gateway location to the Research Park and adjacency to a future Purple Line Light Rail Transit Station to be located directly across River Road. The design features a covered loggia with outdoor seating for a future food service tenant serving the pedestrian circulation of the park. **TILT WALL VALUE OFFICE** design strategy was utilized as a proven technique to offer **SUBSTANTIAL SAVINGS** over conventional construction. The exterior façade is painted tilt wall areas **ACCENTED** as "precast" elements. Entry accents are full curtain wall glass. The building is designed to meet the **LEED SILVER LEVEL** of certification.



5801 URC OFFICE
BUILDING –
UNIVERSITY OF
MARYLAND
RESEARCH PARK

5801 UNIVERSITY
RESEARCH COURT
RIVERDALE PARK,
MD 20737

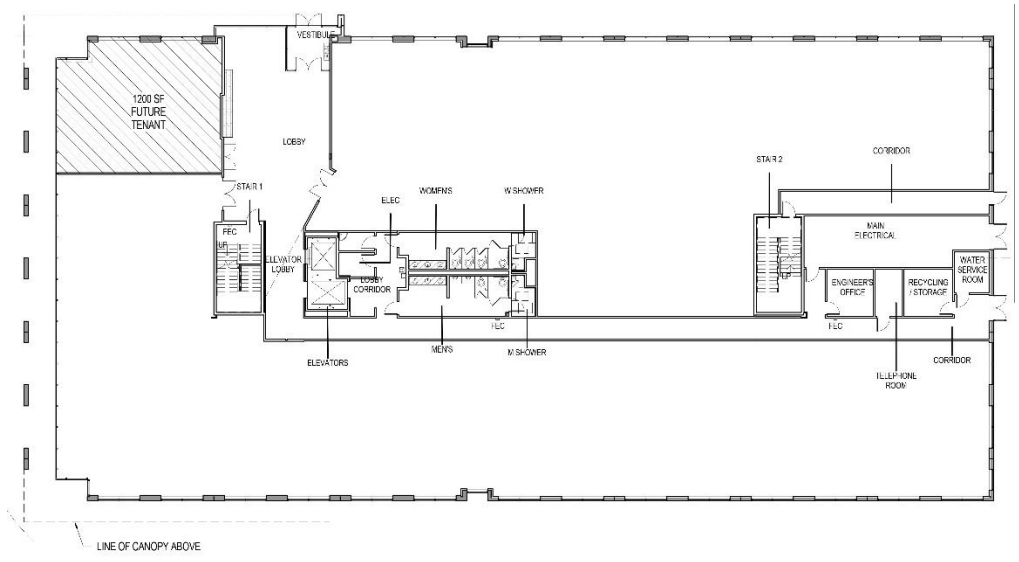
SITE PLAN



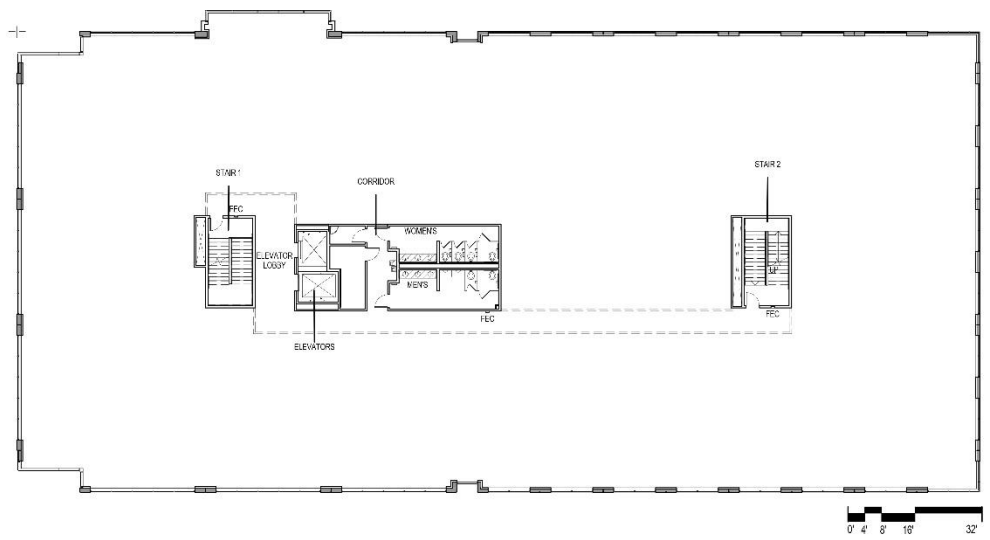
LOBBY



1ST FLOOR



2ND FLOOR



BATHROOM

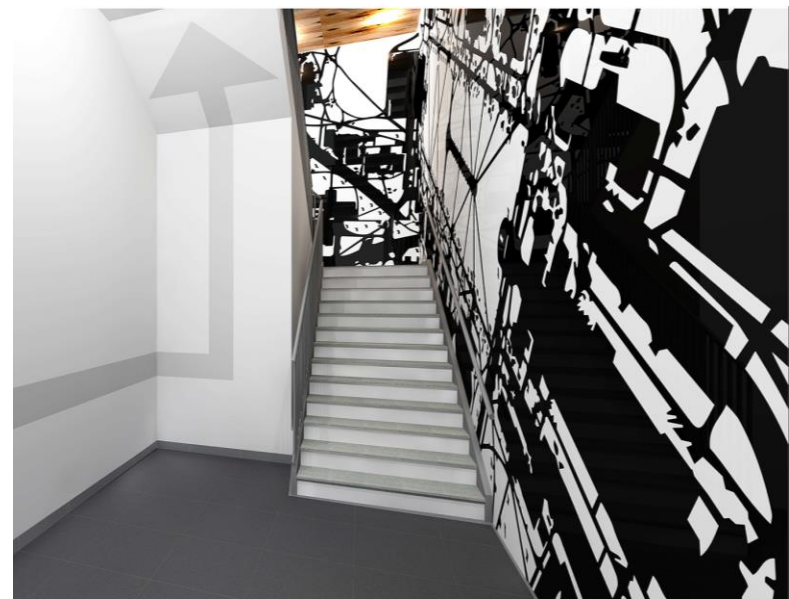


5801 URC

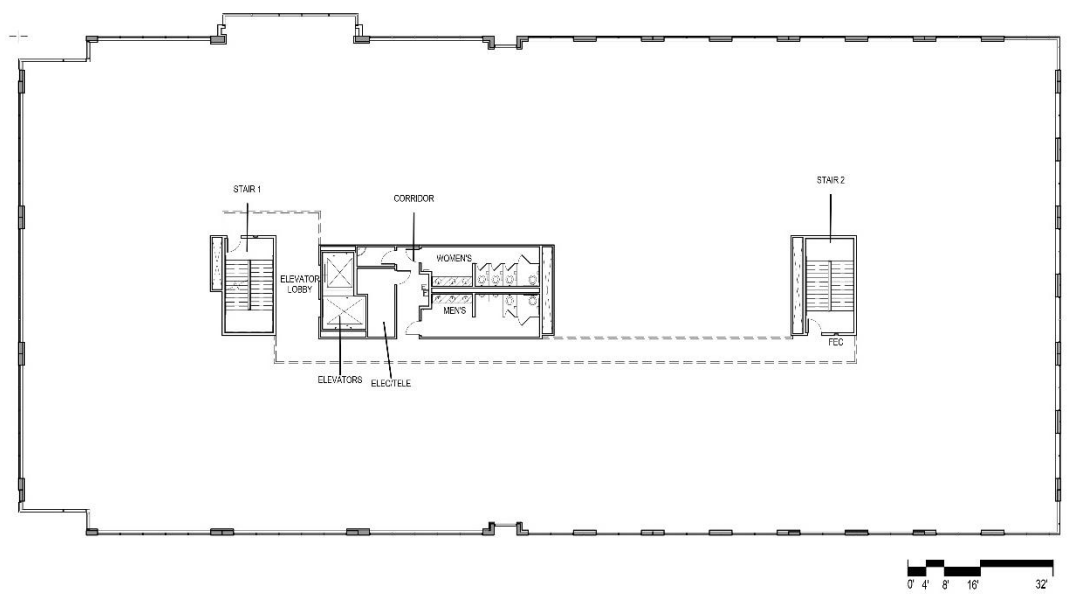
LOBBY



STAIRWAY



THIRD FLOOR



ELEVATIONS



OVERALL NORTH ELEVATION
SCALE: 1/8" = 1'-0"



BUILDING PERSPECTIVE - NORTHWEST CORNER
SCALE:



OVERALL WEST ELEVATION
SCALE: 1/8" = 1'-0"



OVERALL SOUTH ELEVATION
SCALE: 1/8" = 1'-0"



BUILDING PERSPECTIVE - SOUTHEAST CORNER
SCALE:



OVERALL EAST ELEVATION
SCALE: 1/8" = 1'-0"

Building River Road View



Entrance Front View

