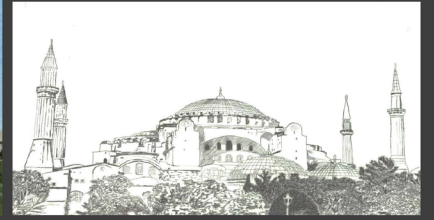
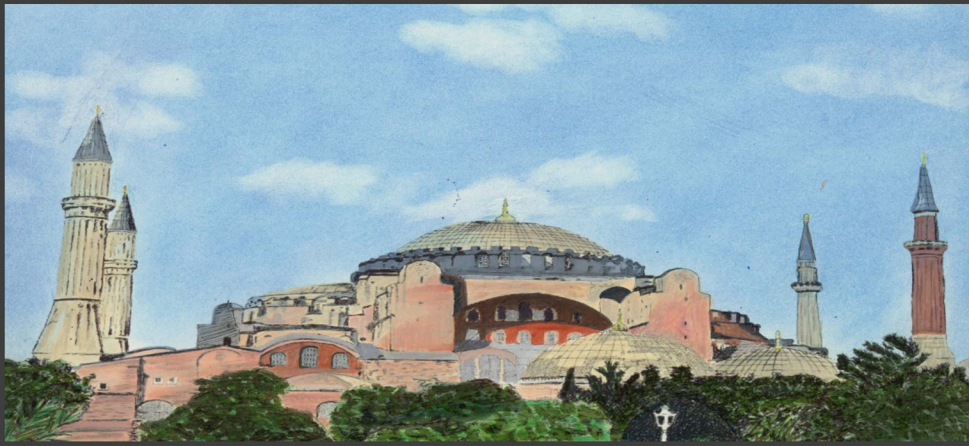
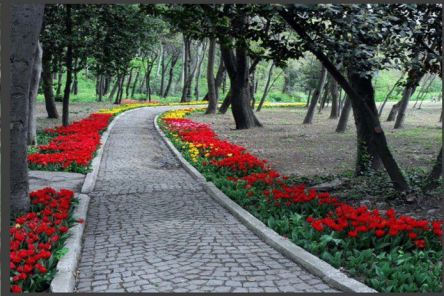


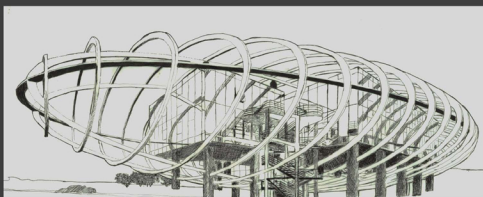
A CITY TO REMEMBER: ISTANBUL



HAGIA SOPHIA, A FORMER GREEK ORTHODOX CHRISTIAN PATRIARCHAL BASILICA, LATER AN IMPERIAL MOSQUE, AND NOW A MUSEUM, SERVES AS AN INSPIRATION TO REPRESENT THE OLD FACE OF ISTANBUL. THROUGHOUT ITS EXISTENCE, THE BUILDING DAMAGE HAS BEEN REPAIRED MANY TIMES. THE CURRENT ARCHITECTURAL DESIGN REVEALS THE RECONSTRUCTIONS AND ADDITIONS CONFORMING TO THE EMPIRE THAT IT ONCE SERVED.



THE YILDIZ PARK SERVES AS A GREAT EXAMPLE OF THE CITY'S GREEN SPACES. ORIGINATING IN THE OTTOMAN ERA, IT IS A GARDEN COMPLEX SHOWCASING A LARGE VARIETY OF FLOWERS FROM ALL OVER THE WORLD.



TEMA ISTANBUL SHOWROOM DEMONSTRATES A HIGH LEVEL OF SKILL AND IMAGINATION OF TURKISH ARCHITECTURE. IT IS A MULTI-PURPOSE CONSTRUCTION ENCASED IN WHITE ELLIPTICAL STEEL RIBS. DURING THE DAY, THE CENTRAL PORTION OF THE BUILDING APPEARS ALMOST INVISIBLE. THIS IS A RESULT OF THE MIRRORED FAÇADE REFLECTING ITS SURROUNDINGS, WHILE THE ENVELOPE GENERATES DIFFERENT VISUAL INTERACTION IN RELATION TO ITS CONTEXT.