

# FIDDLE TREE FARM

## E V E N T   C E N T E R

F R E D E R I C K ,   M A R Y L A N D

UNBUILT ARCHITECTURE: COMMISSIONED PROJECTS

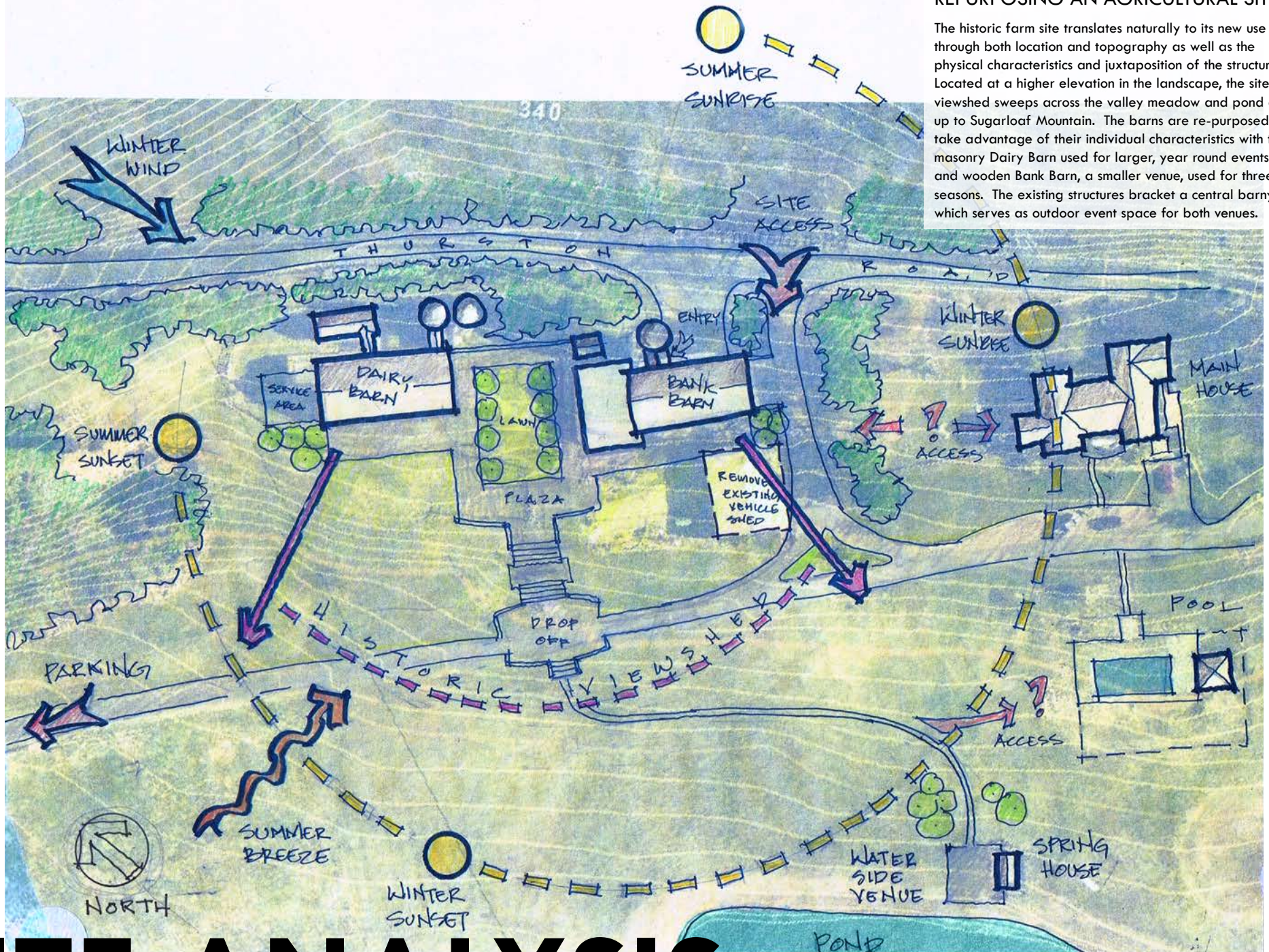
Located at the foot of Sugarloaf Mountain on 300 acres in Frederick County, Maryland, the project site is that of a former dairy farm including an open barnyard surrounded by the existing structures of a wooden bank barn, masonry dairy barn, and silos.

The project program is to adapt the site and structures into a modern event center taking advantage of the large open spaces of the existing barns and the historic rural setting.



## REPURPOSING AN AGRICULTURAL SITE

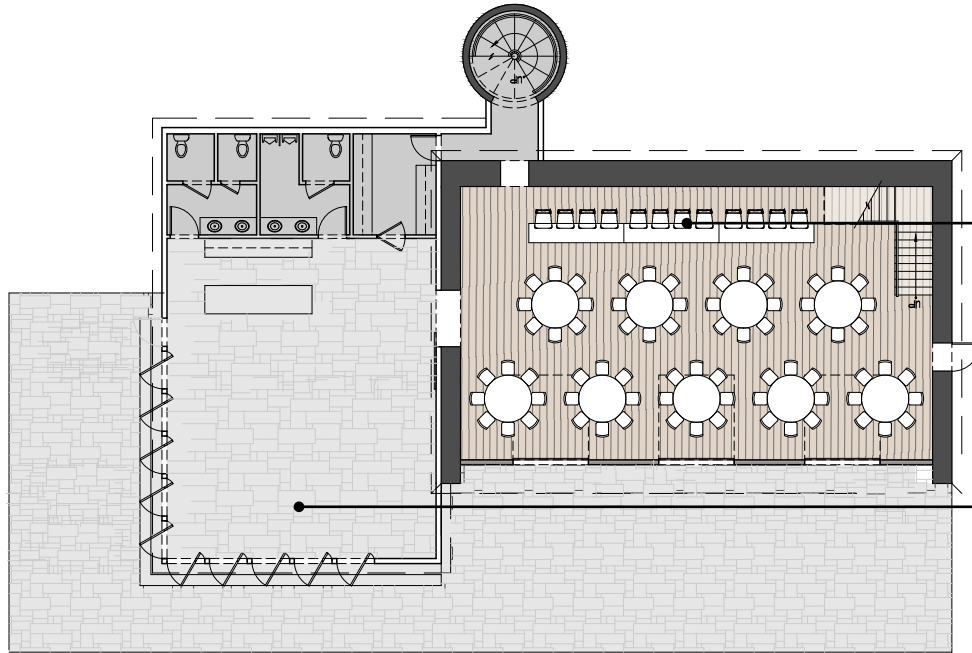
The historic farm site translates naturally to its new use through both location and topography as well as the physical characteristics and juxtaposition of the structures. Located at a higher elevation in the landscape, the site viewed sweeps across the valley meadow and pond and up to Sugarloaf Mountain. The barns are re-purposed to take advantage of their individual characteristics with the masonry Dairy Barn used for larger, year round events and wooden Bank Barn, a smaller venue, used for three seasons. The existing structures bracket a central barnyard which serves as outdoor event space for both venues.



# SITE ANALYSIS



# BANK BARN



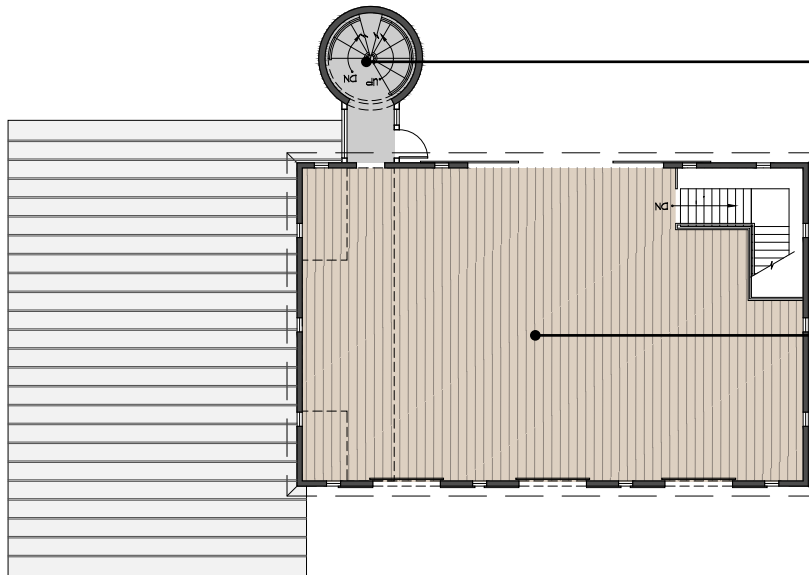
**LOWER LEVEL**

**FEAST**

Restructuring the floor above to eliminate columns opens the lower level of the Bank Barn for catered events of up to 100 people. Operable roll-up glass doors open to an outdoor terrace facing Sugarloaf Mountain.

**CELEBRATE**

The existing adjacent corn crib structure is repurposed into a flexible indoor/outdoor space which can hold a stand alone event or be used in conjunction with the other levels of the barn for larger events. Pivoting glass walls transform the room from an enclosed space into an open air covered terrace.



**UPPER LEVEL**

**CIRCULATE**

Locating vertical circulation in the existing silo makes full use of repurposing the existing structures and connects the levels while maintaining open floor area inside the barn.

**DANCE**

The upper level of the barn is open for parties and dance events. Sliding doors open the space to the surrounding views and to create natural ventilation.



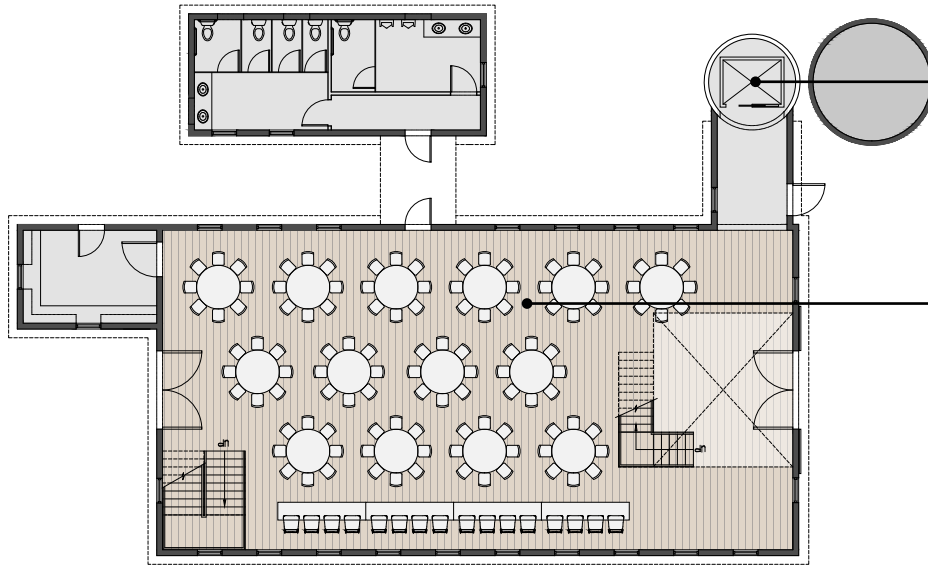
### FRAMING VIEWS

The upper level of the Bank Barn is restored with the large sliding barn doors opening to view the historic landscape. Through the use of existing and traditional materials and using natural ventilation in place of mechanical heating and cooling the space evokes the essence of a barn dance.





# DAIRY BARN



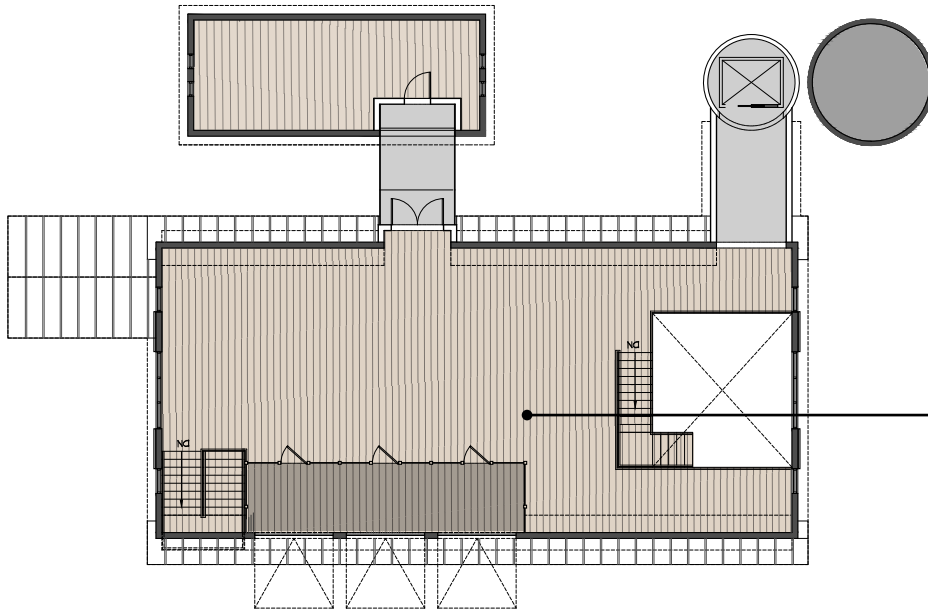
**LOWER LEVEL**

**CIRCULATE**

One of the existing Dairy Barn silos is re-purposed to hold an elevator creating accessibility to the upper level.

**FEAST**

The lower level of the Dairy barn is renovated into large open event space for up to 150 people. A grand stair is located at the entry connecting the levels and open all the way to the existing roof trusses of the barn.



**UPPER LEVEL**

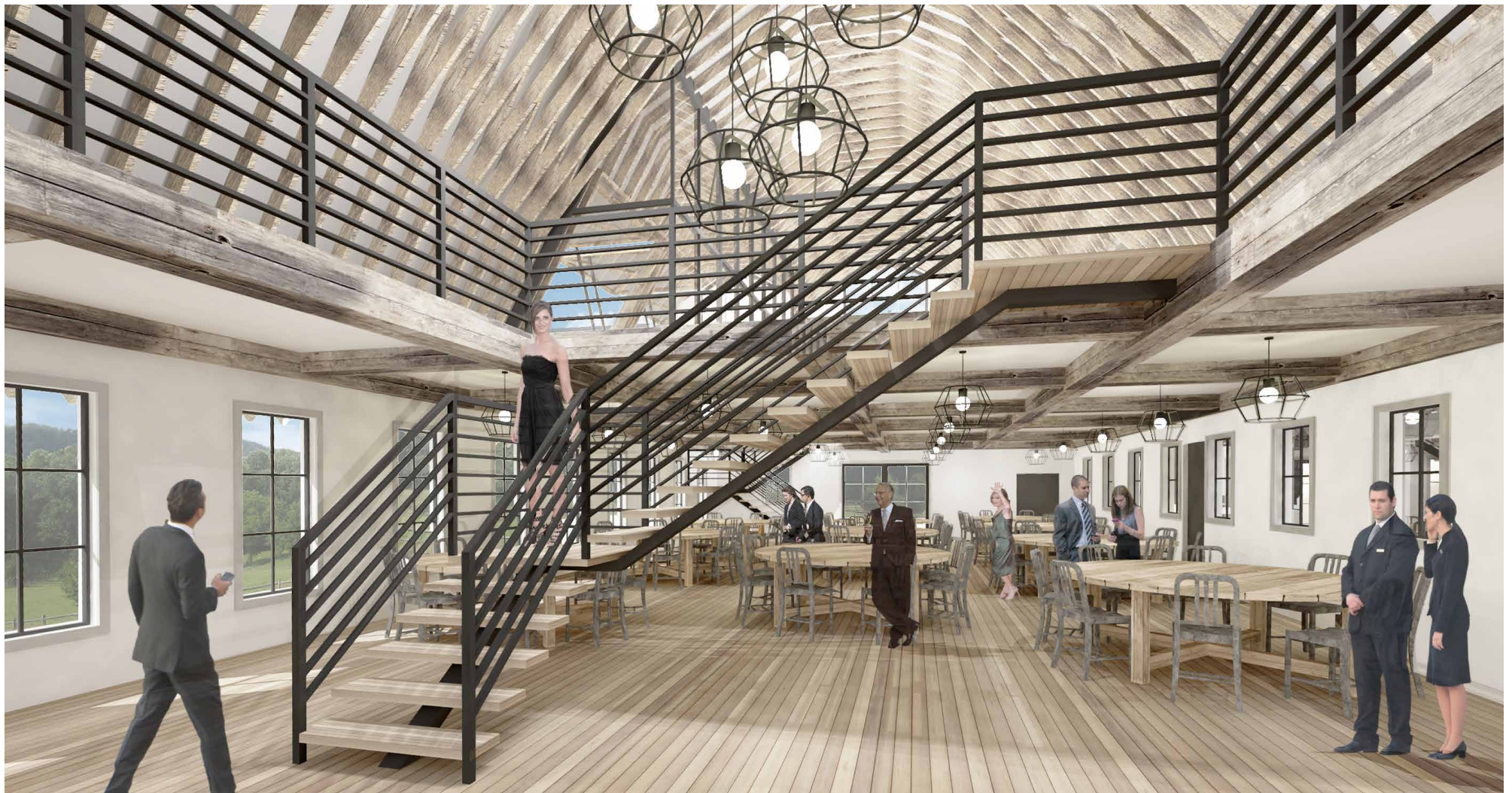
**DANCE**

The upper level of the Dairy Barn is a large open party space and dance floor. Hay loft style barn doors open at both ends of the bringing in light while the lifting roof panels open to a new terrace overlooking the mountain view.









### RECLAIMING VAULTED SPACE

Originally designed as a hayloft with little natural light, the upper level of the Dairy Barn is opened to the lower level exposing the intricate system of roof trusses and taking full advantage of tall vaulted space. Additional light is introduced into the space through the addition of windows at the gable ends and opening the roof onto a new terrace.

