

Project Name: **Oxon Hill High School**
Project Location: **6701 Leyte Drive, Oxon Hill, Maryland 20745**
Project Category: **Institutional Interiors**

High Schools require clear organization and strong circulation systems to move students safely and efficiently through the building during a normal school day. Additionally, schools are used extensively by the community for after-hours and weekend activities.

Oxon Hill High School is designed for 1200 students. 3-story classroom wings are served from a full height concourse anchored by a rotunda. The vertical space allows for views to all levels aiding supervision and helping new students, faculty and visitors orient themselves to the various program spaces.

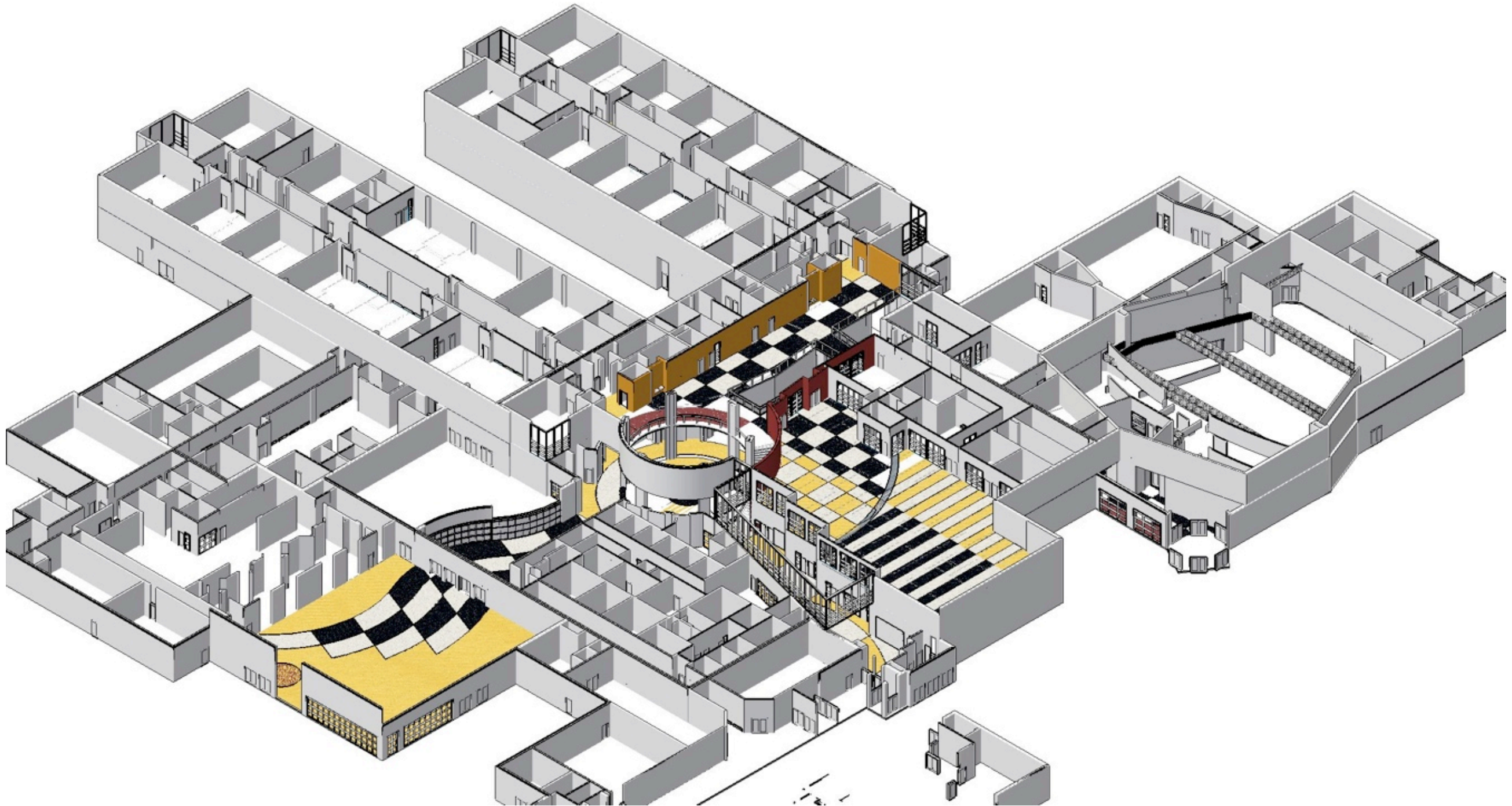
The focus of this submission is on these main circulation spaces. The rotunda is the heart of the school with many planned activities ranging from concerts from the award winning school choir and band, string quartets, student art shows, educational displays, ROTC presentations, and many other informal student-based activities.

The challenge for the design team was to come up with some underlying basis for the selection of colors and materials to amplify the role of these important interior spaces.

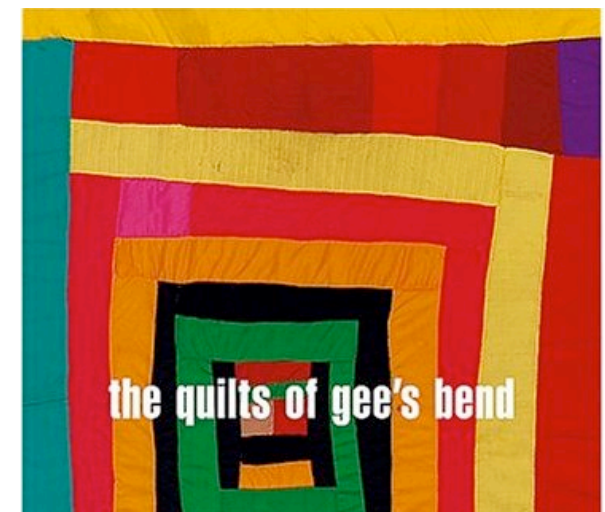


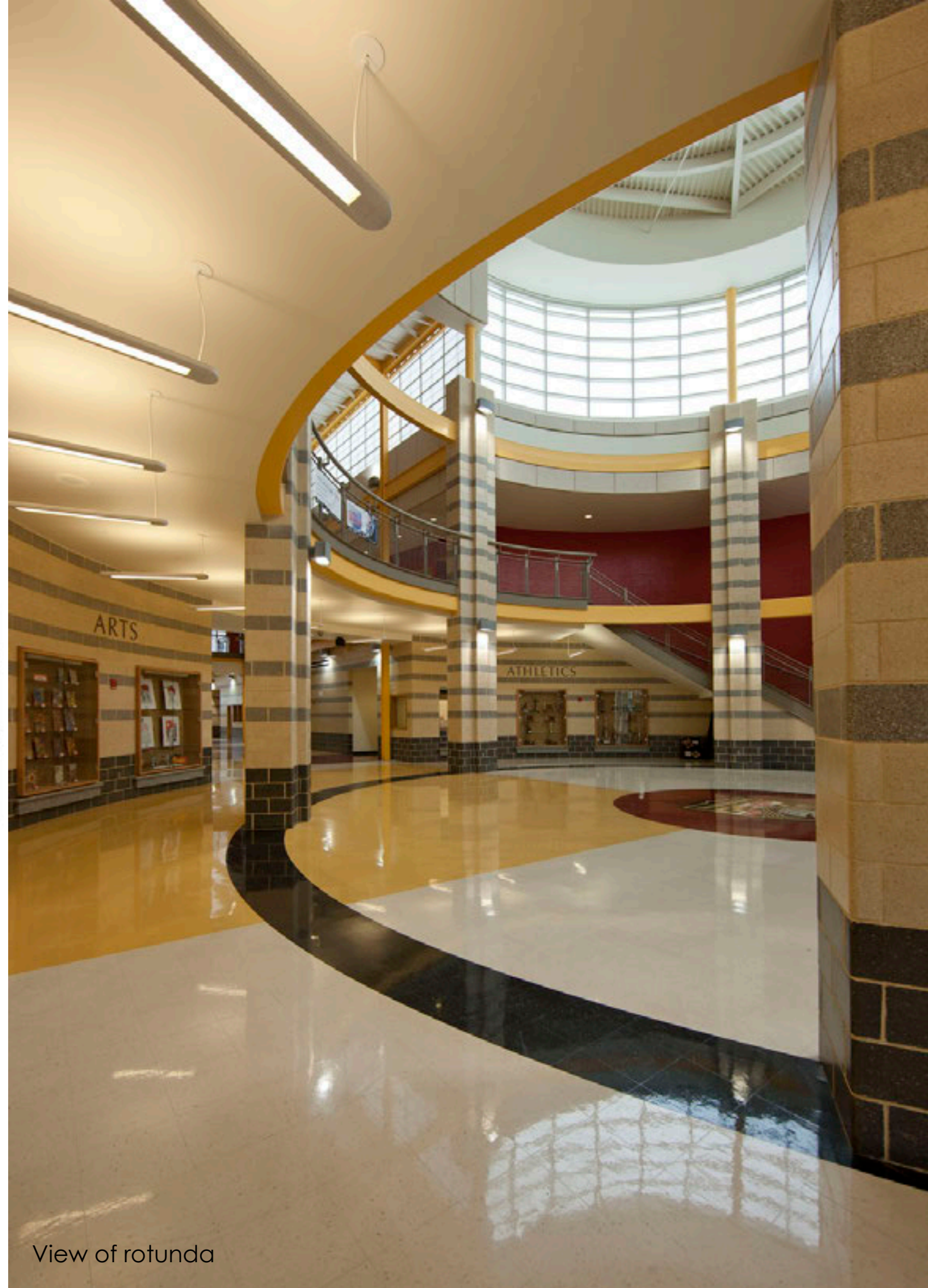
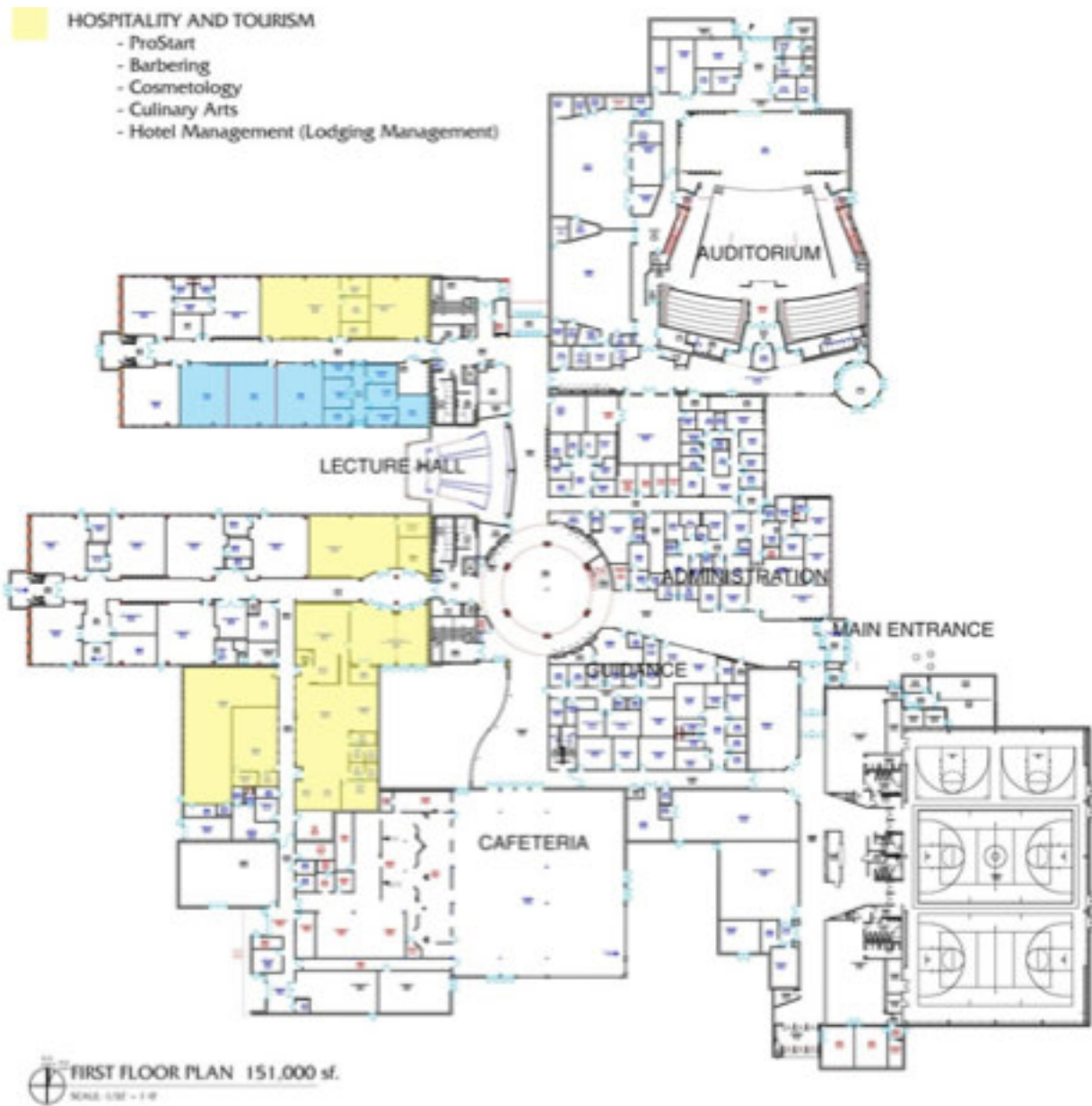
The interiors of Oxon Hill High School incorporate masonry banding found on the exterior and the school colors of black and gold. Colors are further informed and inspired by research into the quilts of Gee's Bend, an African American rural community in Alabama. The quilting tradition in Gee's Bend goes back to the 19th century and features the use of bright colors and simple geometry.





The building is organized along a 3-story concourse anchored by a rotunda. Clerestories in these two elements and along the 2-story entrance flood the interior with natural light. Strong geometric floor patterns define these areas with bright colored wall accents.

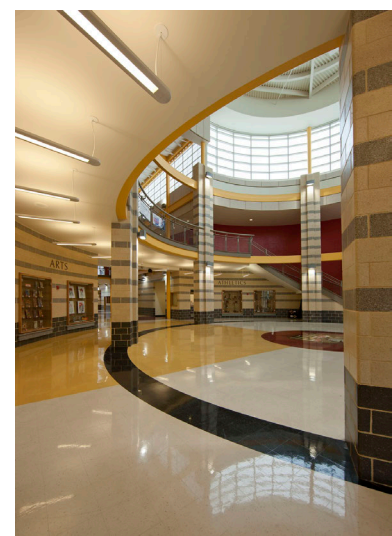
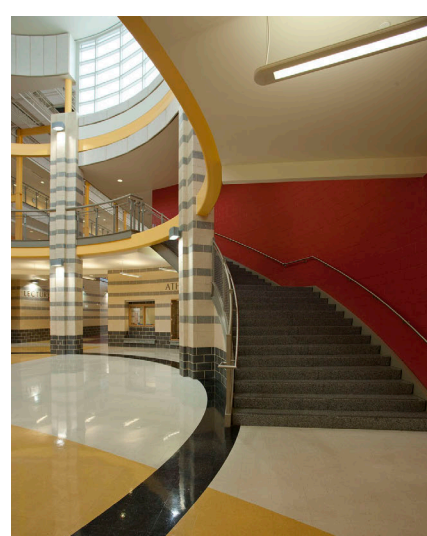




View of rotunda



Views of concourse and rotunda



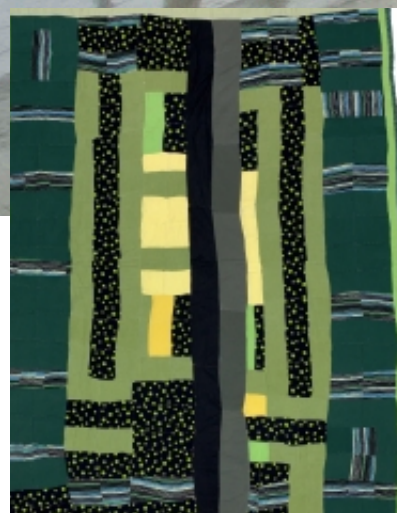


Views of concourse





View of cafeteria hallway looking toward rotunda





Views of main entry hallway looking into Guidance



Views of library



Views of auditorium

