

Maison Defensive

CONTEXT

The longtime owners of a 1950's rambler found themselves surrounded by tear-downs and new oversized spec houses, resulting in a loss of privacy and views. Nevertheless the couple resolved to remain in the neighborhood they loved.

SOLUTION

The architect proposed a defensive strategy to help reclaim the owner's lost privacy. The rambler was retained, the interior redesigned, and a crumbling garage demolished.

A new addition was conceived as a series of conventional architectural forms (shed roofs, a projecting "saddlebag", a kitchen bump-out) in such a manner as to shield the owner from neighboring views.

The sheds are oriented to hide views of the neighbor's higher windows while simultaneously creating a semi-private courtyard. Seen from the interior, the court appears as a continuation of the house, enabling sunlight to flow within. The completed house and studio is 1881 s.f. but the combination of natural light and glazed volume give the illusion of a larger space.

The open planned master suite flows into the house's core spaces as well. Custom furniture and cabinets are designed for warmth and storage. The home studio is a freestanding building, illuminated from high lit windows.

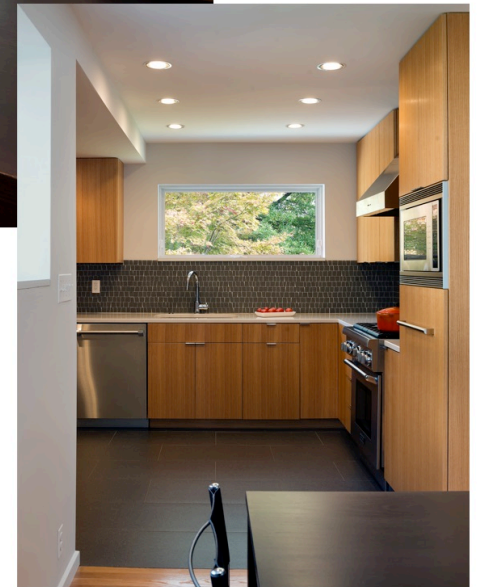
Project Information

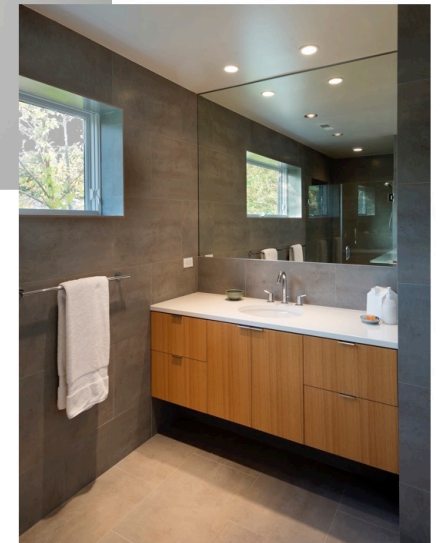
| | Program | Site | Technical |
|---|---|--|---|
| Project: Maison Defensive | Renovate: Existing house interior | An 1100 s.f. suburban rambler shares a lot line with six neighbors. | <ul style="list-style-type: none">• Wood frame construction• Stucco siding on mtl. lath• Copper siding accent• Ducted HVAC (house)• Mini split unit (studio)• Composition + EPDM roof• SWM drywall w/ infiltration trench• See Optional Project Information. |
| Location: Bethesda MD | Add: New kitchen Bed + bath suite Home studio | Four of those six houses had been demolished and replaced by much larger speculative houses. | |
| Category: Residential Architecture, Single Family | Budget: Modest | | |



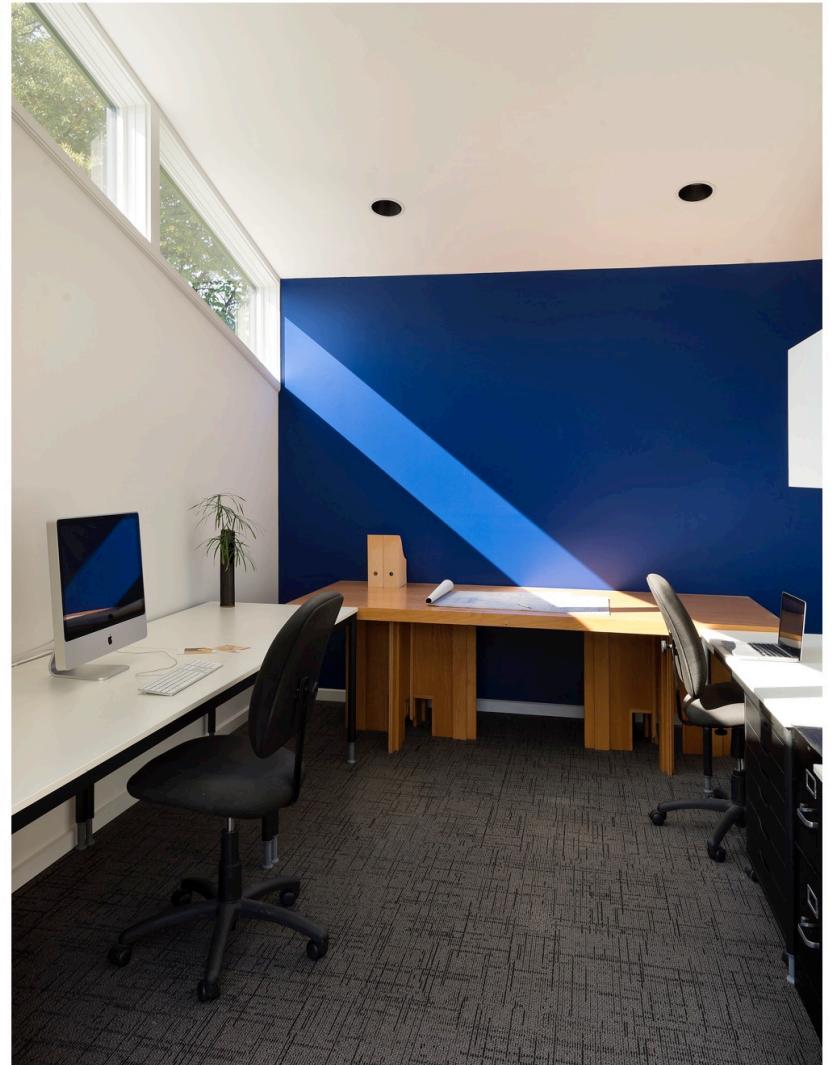


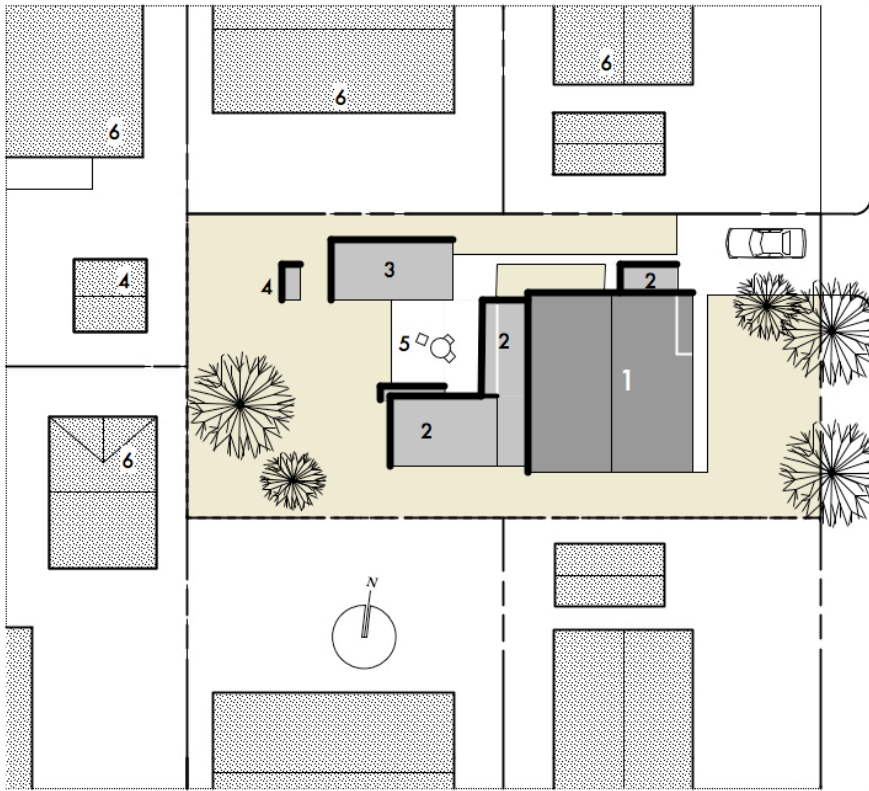








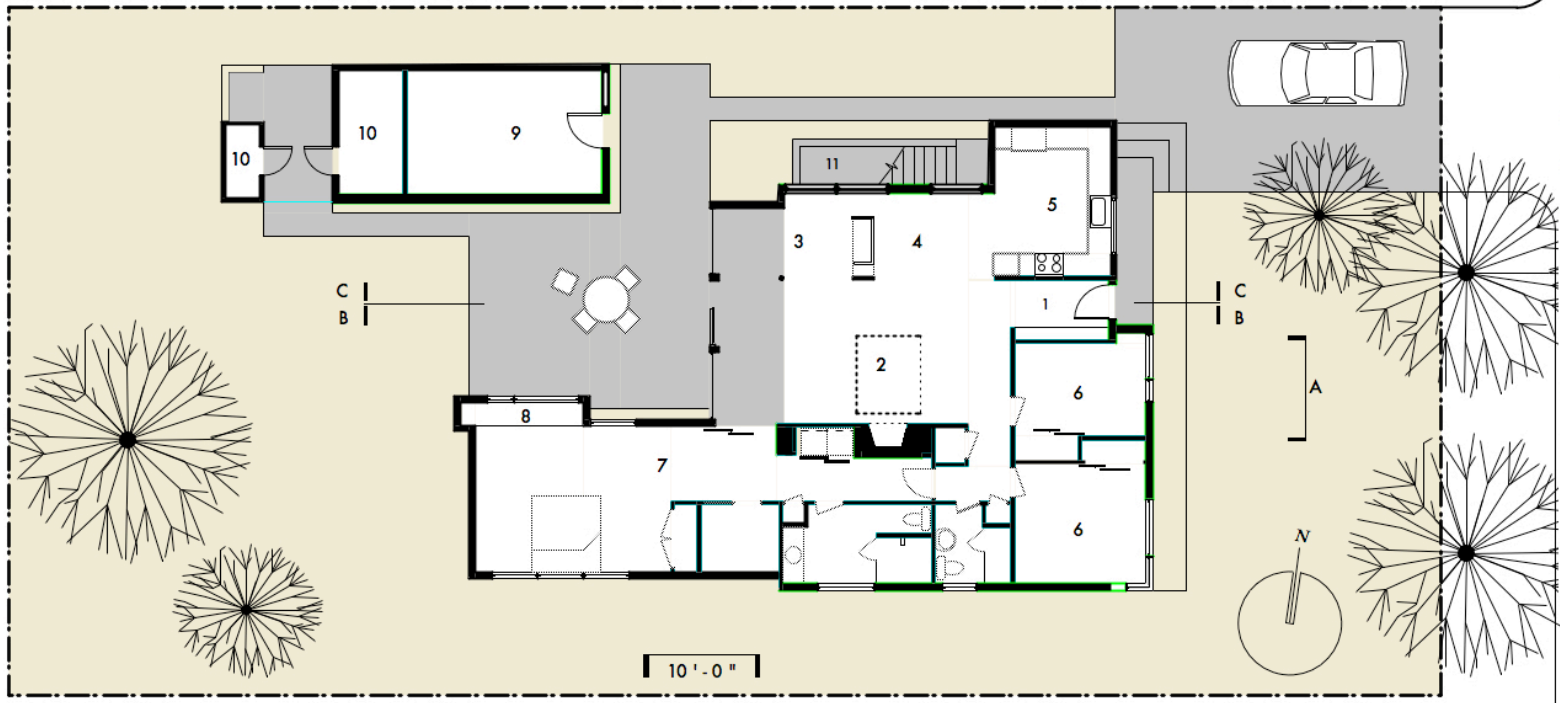
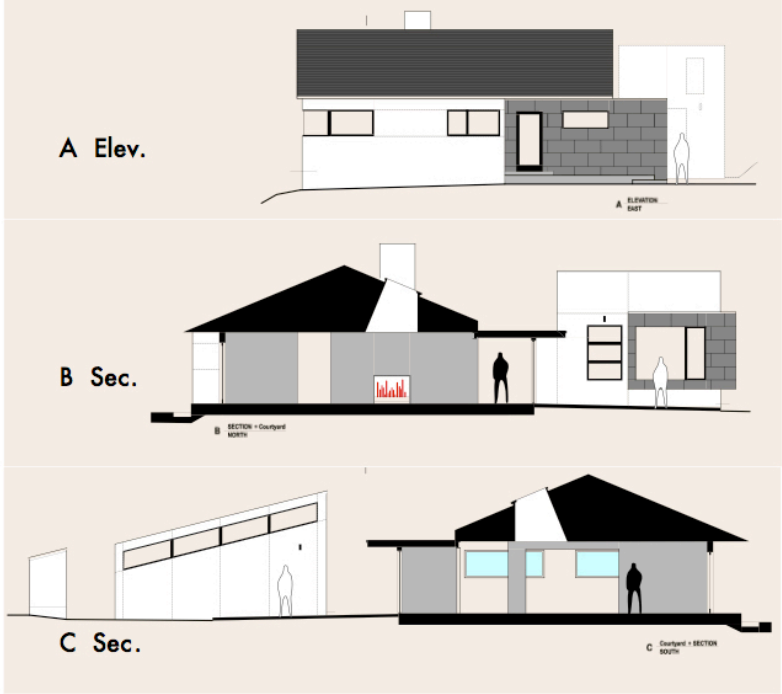




G R A N T S T R E E T

- 1 EXISTING
- 2 ADDITION
- 3 STUDIO
- 4 SHED
- 5 COURT
- 6 SPEC HOUSES

SITE PLAN



G R A N T S T R E E T

FLOOR PLAN

- 1 ENTRY
- 2 SOCIAL
- 3 MEDIA
- 4 DINING
- 5 KITCHEN
- 6 BED
- 7 M.SUITE
- 8 READING BAY
- 9 STUDIO
- 10 WORK SHED
- 11 TO CELLAR



GARAGE



REAR YARD



FRONT / SIDE YARD

ORIGINAL PLAN

