

Georgia State University College of Law

LOCATION
Atlanta, Georgia

CATEGORY
Institutional Architecture



LIBRARY CAFE

An Invaluable Partnership with the City

The Georgia State College of Law's 200,000-sf new building occupies an extremely prominent site in the heart of downtown Atlanta and establishes the University's unique partnership with the city. The Law School is designed to be a resource for urban Atlanta, where students learn by doing through clinical programs, extensive outreach programming, simulation, and partnerships.

Student-Centric Programming

The Law School was designed for advanced learning, research, and collaboration. The design team created a student-centric environment built around instructional space. Classrooms include a wide range of environments for various class sizes and pedagogies, and were placed on the first three floors of the building for access to the main space, breakout and open study areas, and faculty offices.

Dynamic, Active Learning Environments

Considered the social heart of the law school, the law library is an example of an experimental collaborative learning and research environment. Ninety percent of the library collection is housed in zones of high-density compact storage, allowing more room for student program space and resources, such as areas for instruction and group work, a café, active learning spaces, two outdoor terraces, and IT support. A wide variety of seating configurations allow students to work individually or in groups and to adjust their tools and furnishings in places for customized work environments.

Sustainable Design

The building is targeting LEED-NC Silver certification. Sustainable features include a frit glass curtain wall system and zinc metal panels that clad the scholarship/library program on the upper floor—the 40% frit glass and large metal sun shade combine to maximize daylighting within the library block while reducing solar heat gain.

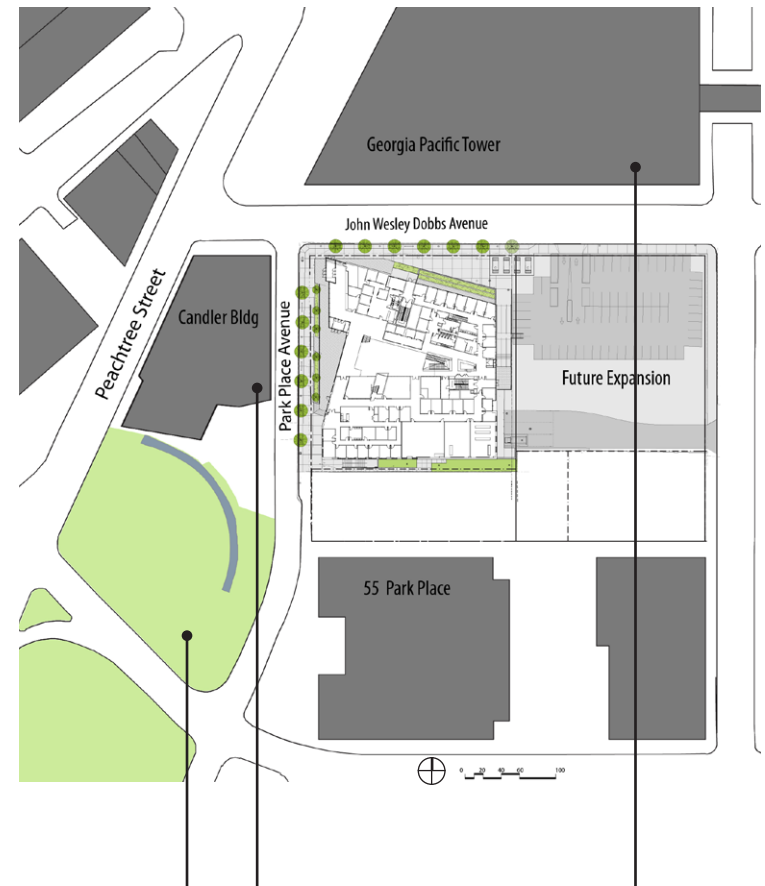


CORNER OF PARK PLACE AVENUE AND JOHN WESLEY DOBBS AVENUE



LIBRARY TERRACE

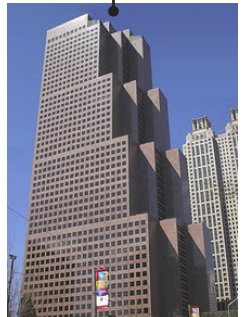
DOWNTOWN ATLANTA CONTEXT



WOODRUFF PARK



CANDLER BUILDING



GEORGIA PACIFIC
TOWER

PARK PLACE AVENUE FACADE



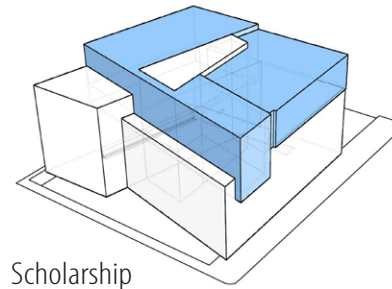


LIMESTONE FACADE DETAIL

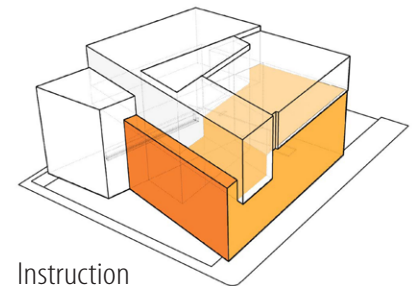
VIEW FROM JOHN WESLEY DOBBS AVENUE



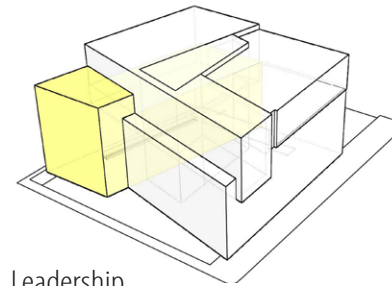
PROGRAM



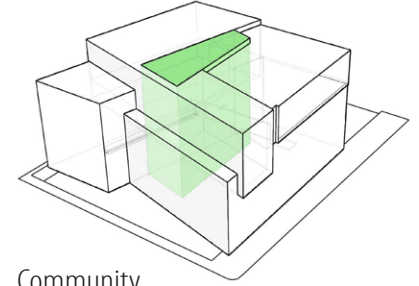
Scholarship



Instruction



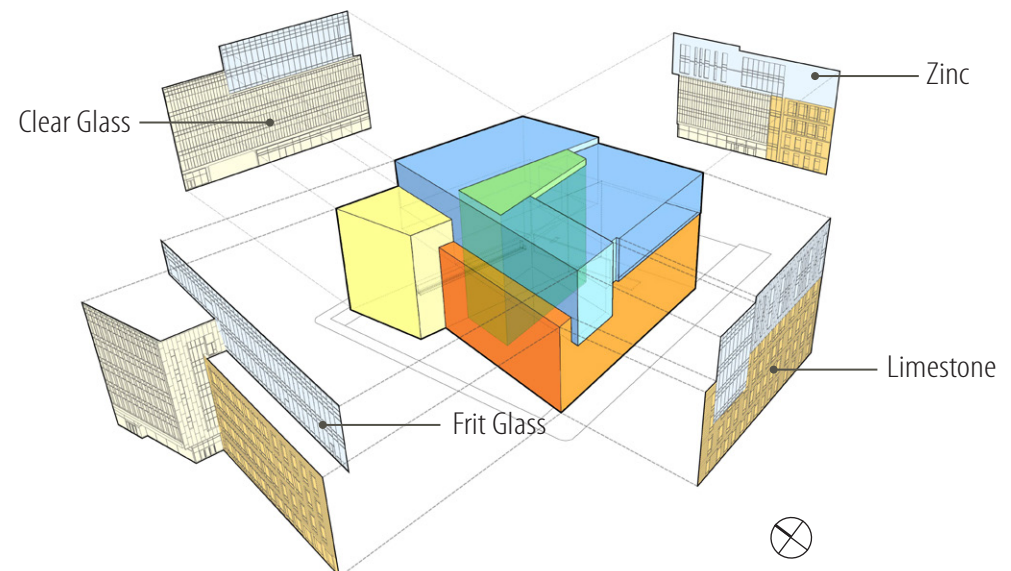
Leadership

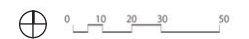
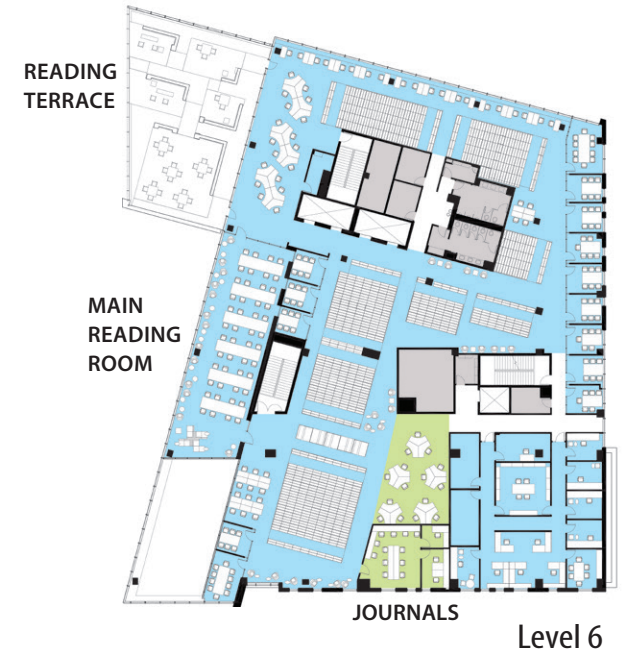
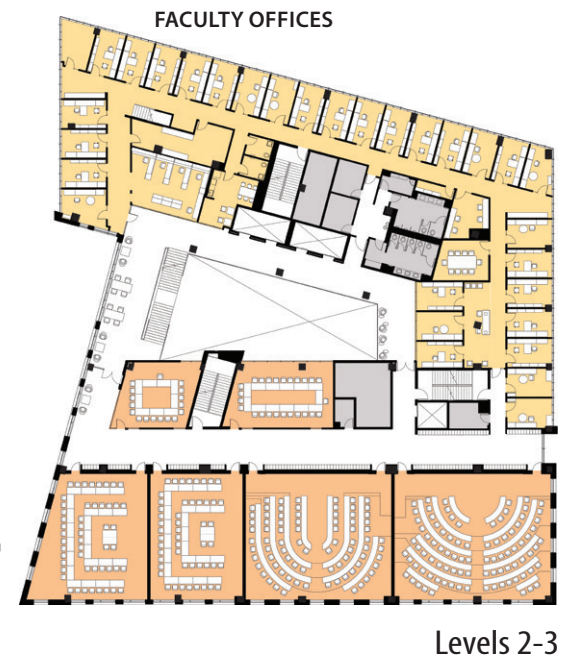
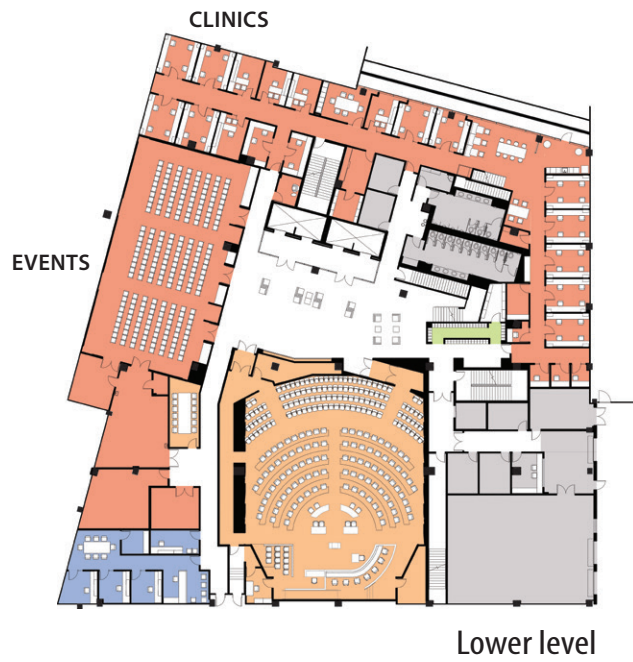


Community



MATERIAL





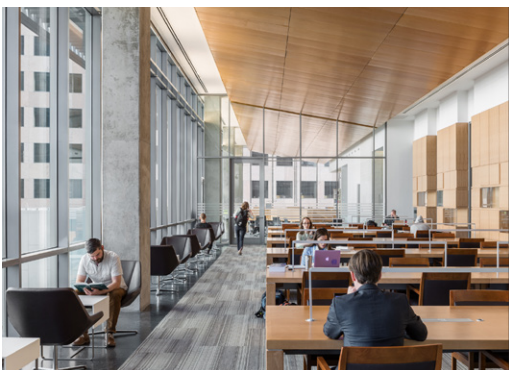




THE LAW LIBRARY



CARRELS



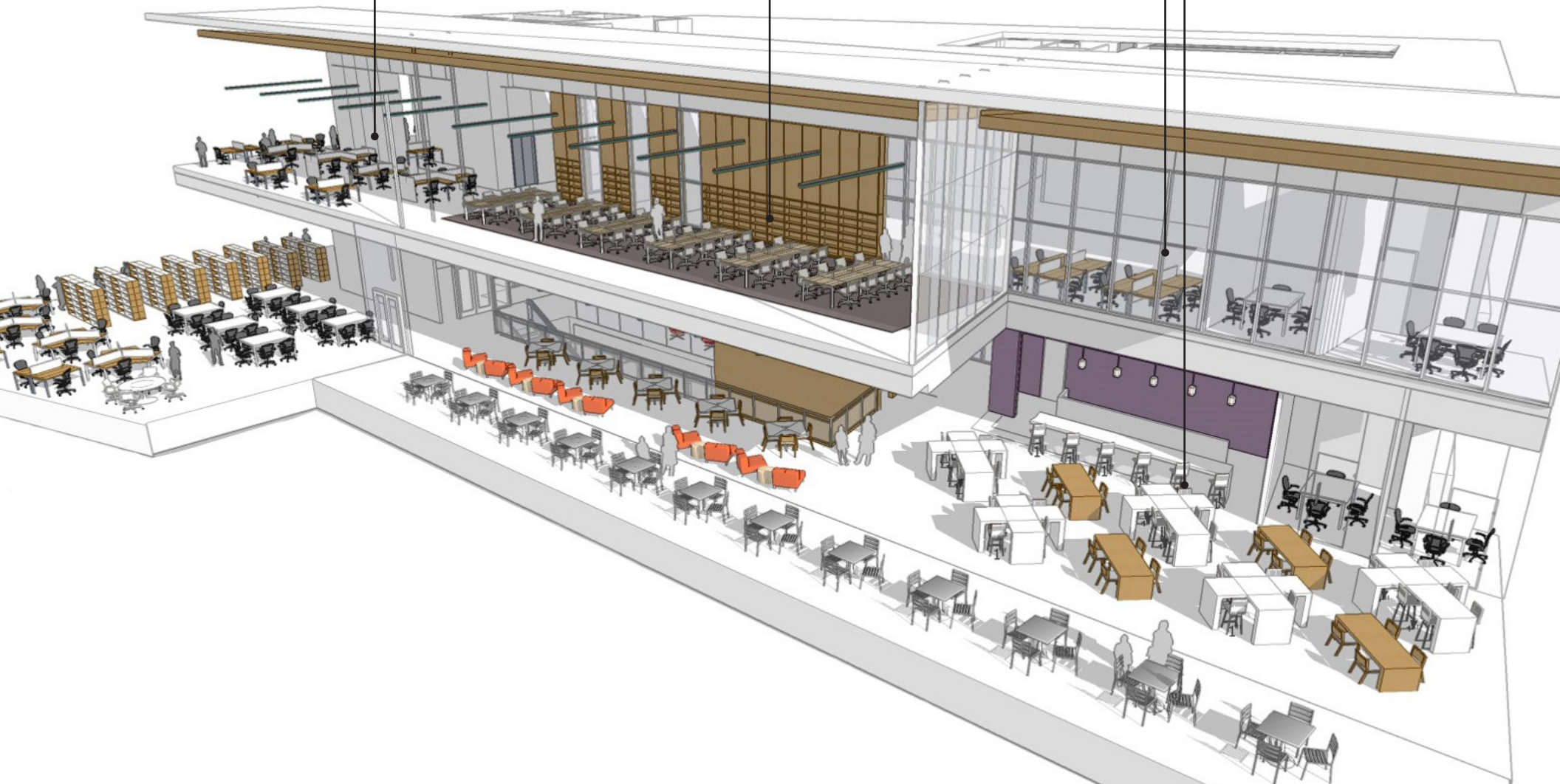
GRAND READING ROOM



ENCLOSED GROUP STUDY ROOMS



ACTIVE LEARNING/CAFE



READING TERRACE





"The new building . . . promises us the facility, the design, the focus on student needs, and the partnership opportunities to deliver on these goals on a grander scale—to be bold, to show the country what is truly possible with legal education when you have the tools, the wherewithal, and when you are located within a vibrant, supportive urban center."

Steven Kaminshine, Dean
Georgia State University