

1545 Girard Street NE
Washington, DC

Residential
Architecture
Multi-Family

GIRARD STREET SENIOR APARTMENTS



Independent senior living, offering it's residents amenity-rich universal design.



Rooftop heating & cooling systems designed to comply with

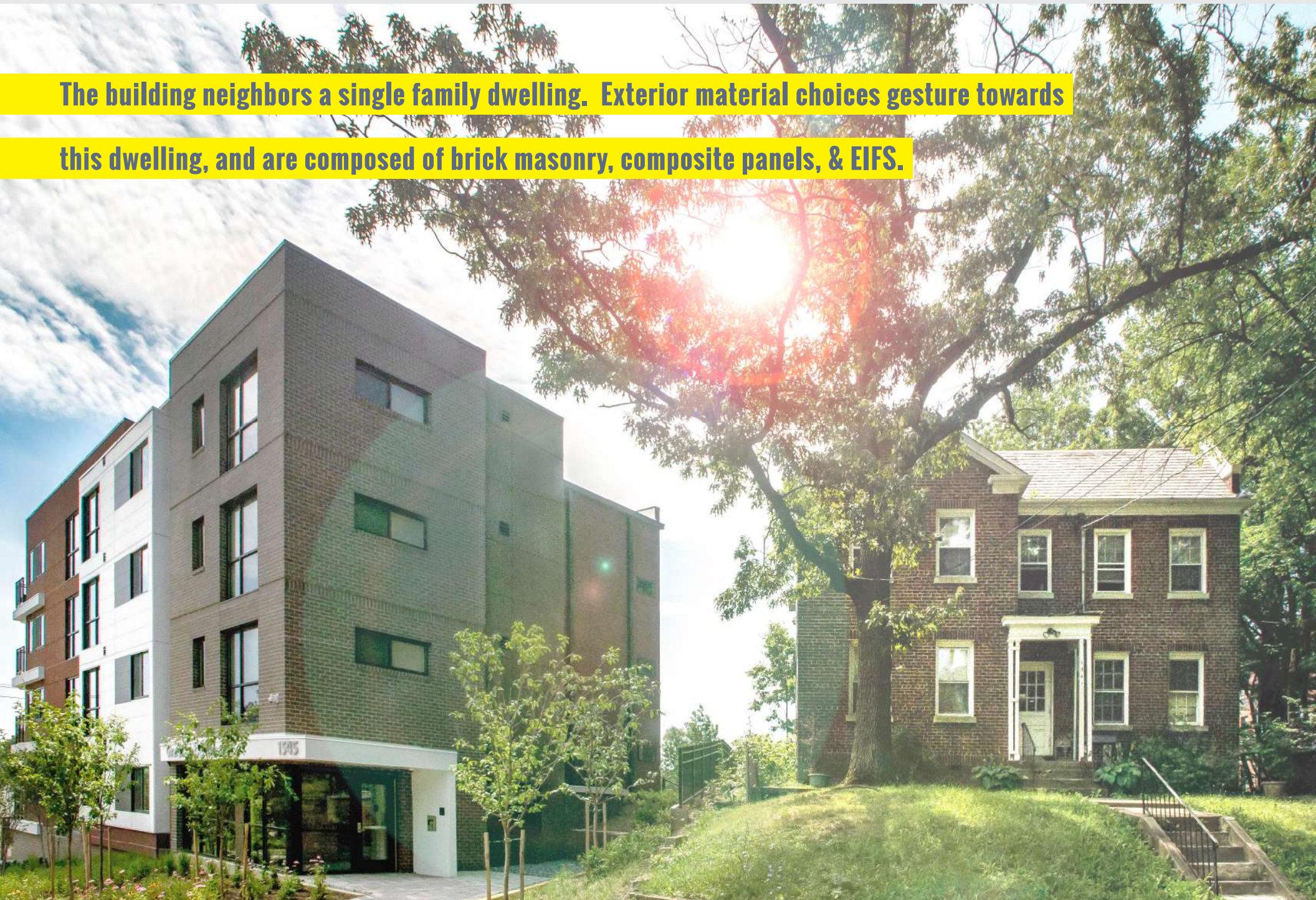
Enterprise Green Community standards.

A 15-foot grade change across the site allows one to easily access the parking garage,

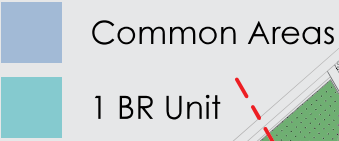
yet the building remains within the 50-foot height restriction.

All photography — © Chris Kennedy Images

The building neighbors a single family dwelling. Exterior material choices gesture towards this dwelling, and are composed of brick masonry, composite panels, & EIFS.



SITE PLAN // FIRST FLOOR PLAN



- | | | | |
|---|-------------------|----|---------------|
| 1 | Retaining Wall | 7 | Reception |
| 2 | Plaza | 8 | Corridor |
| 3 | Entrance | 9 | Library |
| 4 | Parking Entrances | 10 | Hearth |
| 5 | Vestibule | 11 | 'Living Room' |
| 6 | Office | 12 | Yoga Studio |





The 'Living Room' looks out onto the Plaza and gardens.

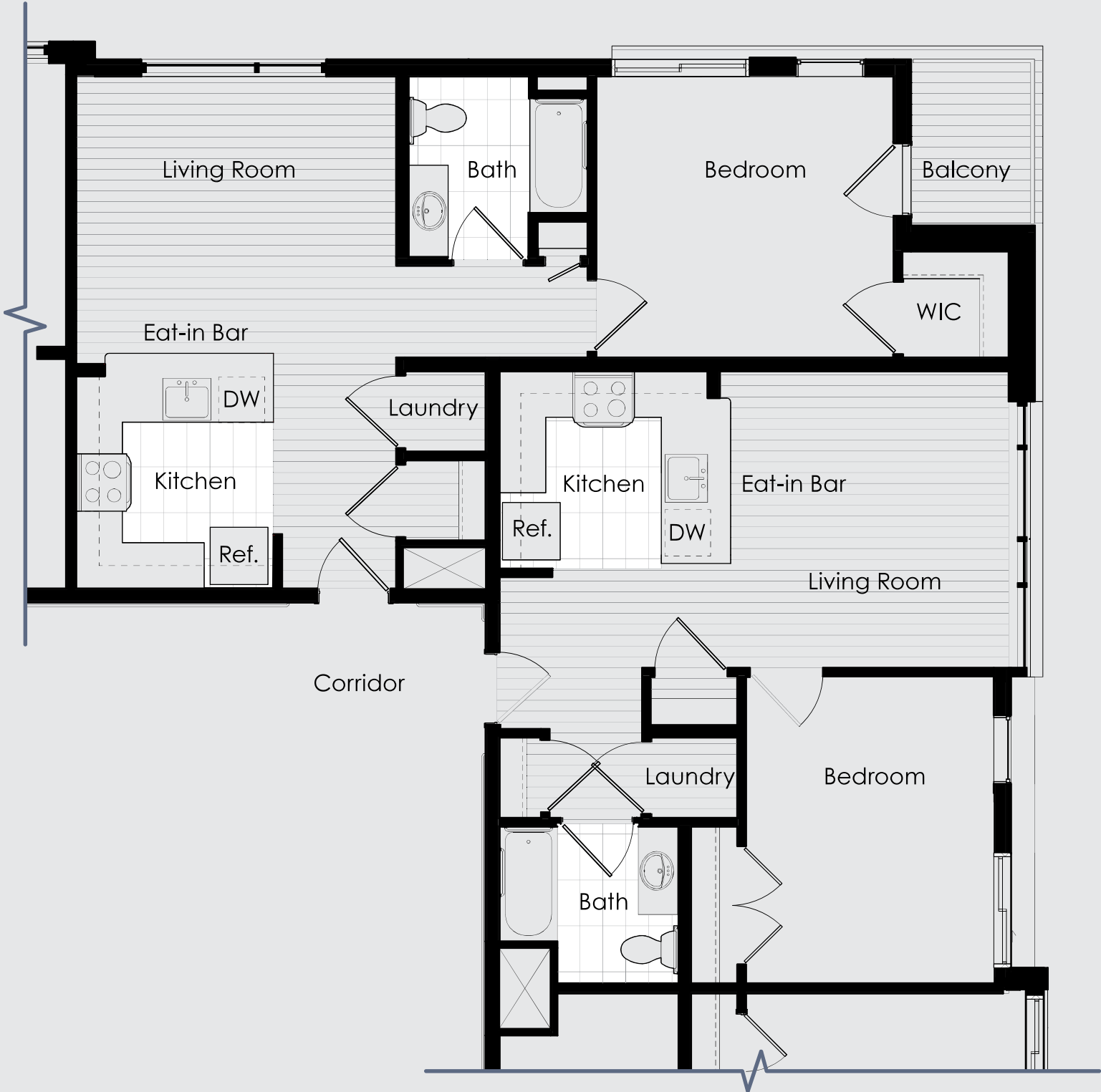




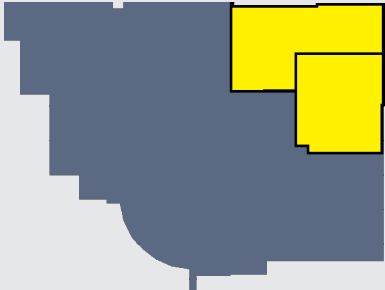
The large first floor Library encourages social behaviour.

TYPICAL UNIT PLANS

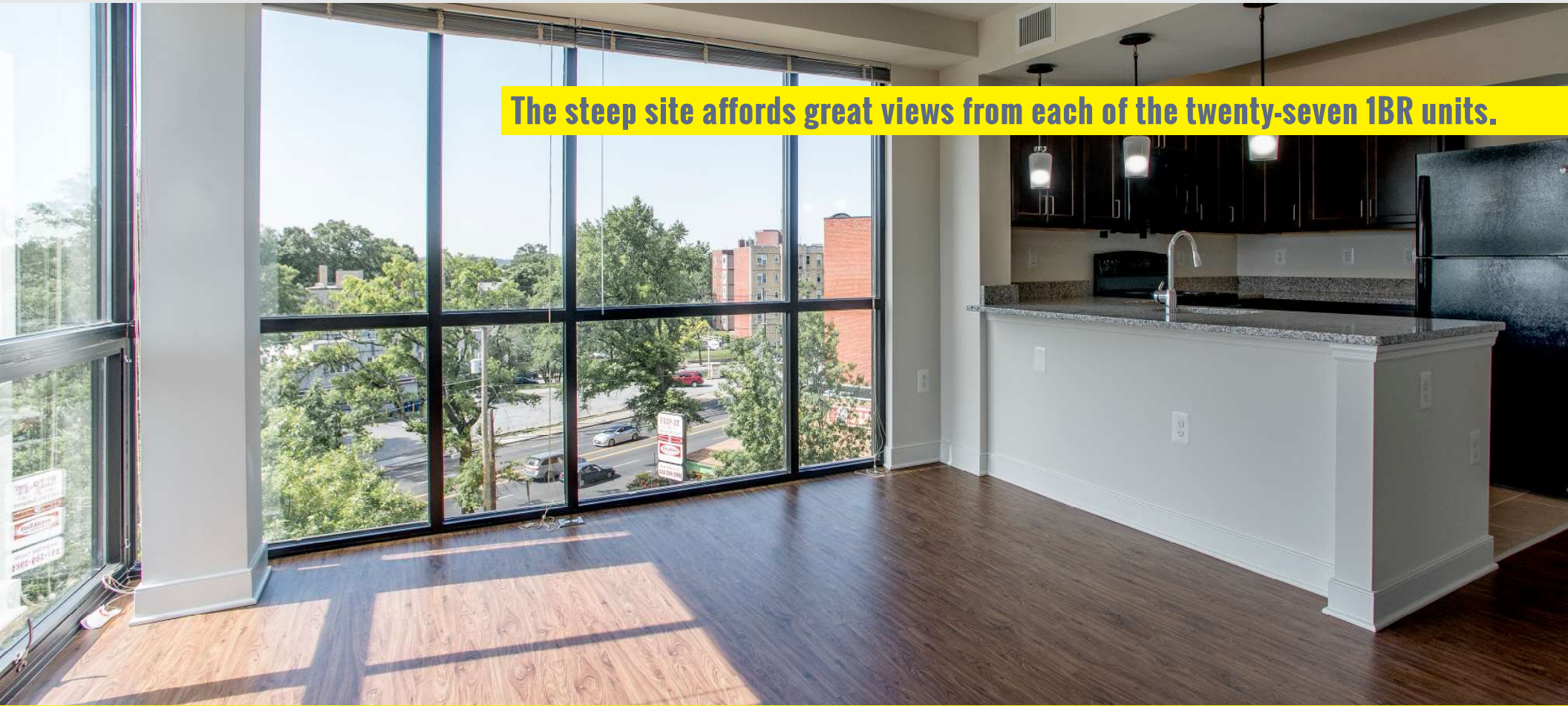
- 1
- 2
- 5



KEY PLAN



The steep site affords great views from each of the twenty-seven 1BR units.





**Seven units feature balconies,
placing residents in close proximity to both materials and space.**

A photograph of a modern, multi-story residential or commercial building. The building features a mix of materials: dark grey panels on the upper floors, light grey stucco on the middle floors, and brickwork on the lower levels. Two balconies with dark metal railings and mesh screens are visible. Large windows with dark frames are prominent. Green foliage is visible in the foreground and background. A yellow text box is overlaid on the upper right portion of the image.

The varied materials layer over each other

through extruded volumes.