

# Northern Virginia's New Epicenter for Economic Growth

## Project Name / Location

Regional Center for Workforce Education + Training / Woodbridge, VA

## Project Category

Institutional Architecture

## Program

55,000 sf, institutional facility

## Project Synopsis

Before the new Regional Center for Workforce Education and Training (RCWET) was built at the intersection of Neabsco Mills Road and N. College Drive, at the entrance of the Woodbridge Campus of the Northern Virginia Community College system, the campus had no physical presence and direct link to the community, as all its existing facilities were located out of sight, down a ravine. With the intent of becoming an ambassador for the college, announce the presence of the campus, and link the college to its community as a resource and hub for local businesses and local as well as federal government and the military, the new Workforce Center not only is a new beacon, it is a new building type that provides superior training

and education in cybersecurity, healthcare, information technology, and program management that is directly tied to the surrounding community.

The building's positioning, geometry and transparency intentionally provide a connection to the neighborhood in which it sits. The telescoping spine space purposefully provides views to the community and the campus, connecting the two visually and serves as an organizing element that supports an academic classroom bar to one side (south) and a multi-purpose hall to

the other (north). The inviting contemporary character of the structure which incorporates masonry, metal panels and glass in its composition - together with its sustainable features and design - is meant to illustrate to the community the connection the new environmental college campus is making between its present and its future.

Designed to support new programs, attract new students, and create new partnerships by ad-

ressing rapid growth and change in the dynamic Prince William County region, this exciting new facility is the visible hub helping shape a workforce that meets the fast-paced technology driven needs of Northern Virginia businesses, government, and military communities and its landmark presence acts as the new epicenter of economic development and community connectivity.







building exterior at dusk



On track to achieve LEED Silver Certification, some sustainable features include an energy star, vegetated roof tray system to mitigate heat island effects, use a regional and low-emitting materials, and innovative wastewater technologies.







building exterior looking into classroom spaces





entrance vestibule





The interior of the building is organized by the main circulation spine, *the main hall*. Functions within the main hall include the building lobby, reception area, the multi-purpose hall lobby, and break-out spaces. A double-loaded corridor serves the academic classroom bar to the south of the main hall while the large multi-purpose hall is accessed directly from the main hall. Along the perimeter of the academic bar are a combination of classrooms, conference rooms, and offices. Computer labs, bio-tech labs, and restrooms are located toward the building interior. A service corridor is located to the north of the multi-purpose hall, and provides access from the loading dock, mechanical spaces, electrical room, catering kitchen, and storage and staging spaces that serve the multi-purpose hall.





site plan





- ① Entrance Vestibule
- ② Reception Desk
- ③ Public Assembly Space
- ④ Lounge
- ⑤ Multi-purpose Room
- ⑥ Auditorium
- ⑦ Labs/Teach Space
- ⑧ Cafe
- ⑨ Administration / Office
- ⑩ Classrooms
- ⑪ Service Areas



first floor plan





⑫ Labs/Teaching Space

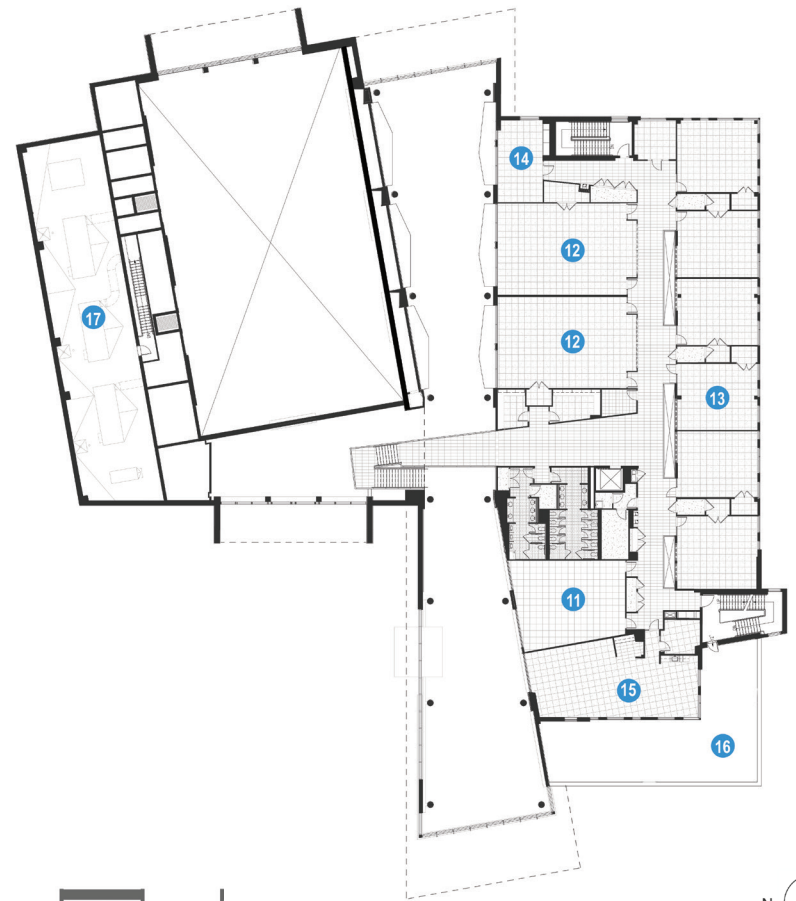
⑮ Testing Center

⑬ Classrooms

⑯ Outdoor Terrace

⑭ Conference Room

⑰ Mechanical Penthouse



0' 25' 50'



second floor plan



Designed for a community immersed in technology, the new Regional Center for Workforce Education and Training enhances the NOVA Woodbridge Campus mission by maximizing connections between interior space, landscape, and the surrounding community while adding sensory excitement through views to the exterior, letting the user enjoy sunlight, watch the change of seasons, experience color, texture, and letting the building be a beacon of the community.

