



**Montgomery County
Circuit Court**

Rockville, Maryland
Institutional Architecture

The Montgomery County Circuit Court has become the eastern anchor for a revitalized government center and a symbol of the courts' important role in the community. Sited in downtown Rockville, this project involves the design of a new courts annex and renovation of parts of the existing courthouse.



The design approach seeks balance, cohesion through common purpose, and demonstration of the compelling ideals of an orderly society. The courtrooms are prominently displayed on the facade becoming the central expression of the building. Each of the four sets of stacked courtrooms takes on the expression of a powerful column or “pillar.” The pillars, clad in copper-toned metal panels, represent the dignity of the judicial system. They are topped by glass “lanterns” that glow as beacons, highlighting the importance of the judicial system.

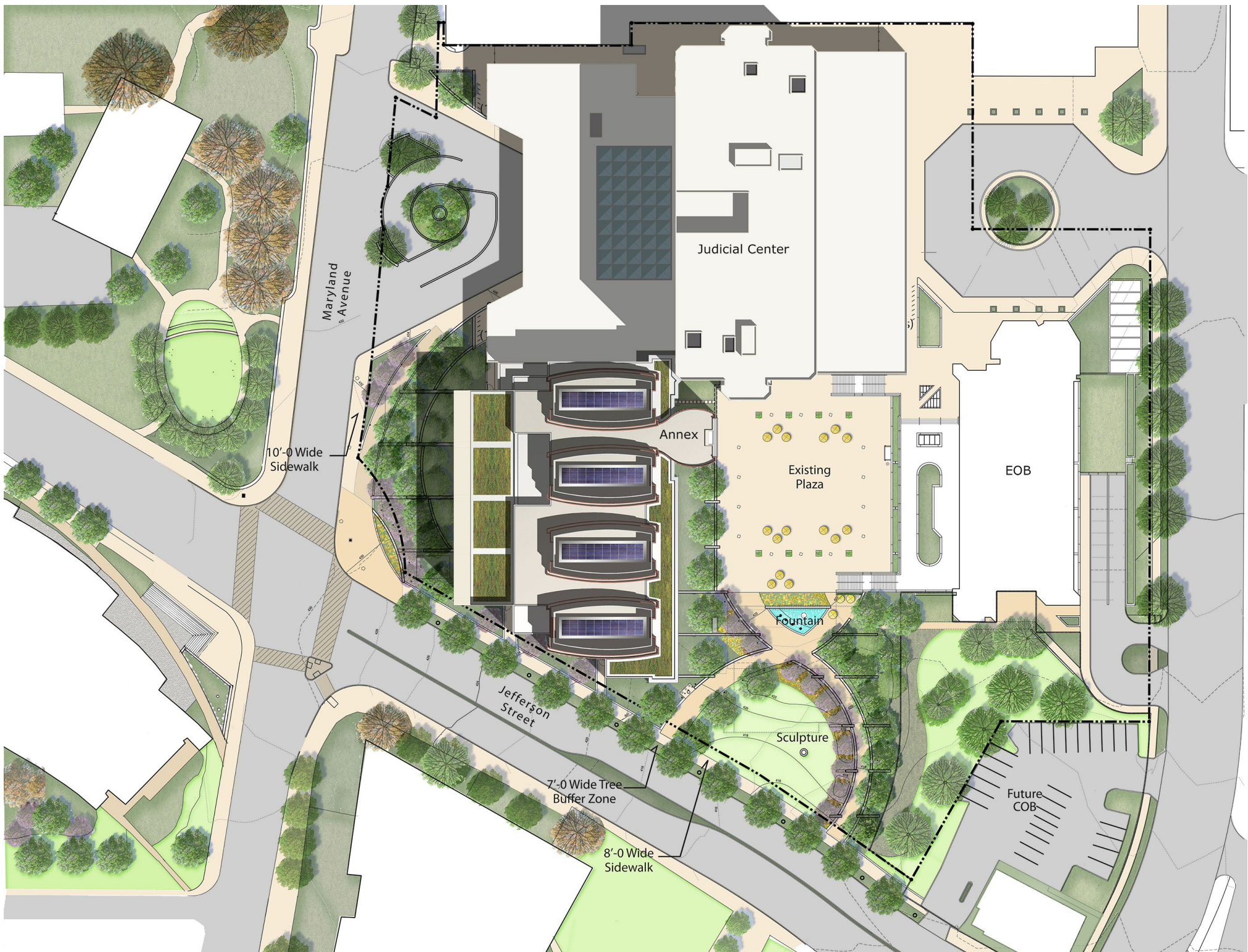


The design improves circulation throughout the complex by reconfiguring the existing screening areas for additional queue space and developing a new public corridor leading to the annex. The first floor is organized in a user friendly "T" configuration to facilitate way finding.



The Annex features four courtrooms per floor organized around a north-south corridor that overlooks a shared government plaza and landscaped park. The public face is expressed through a glass curtainwall system opening towards the plaza as a symbol of government transparency. Judicial officer spaces look out to the District Court and the historic court plaza.





Maryland Avenue

Judicial Center

10'-0" Wide Sidewalk

Annex

Existing Plaza

EOB

Fountain

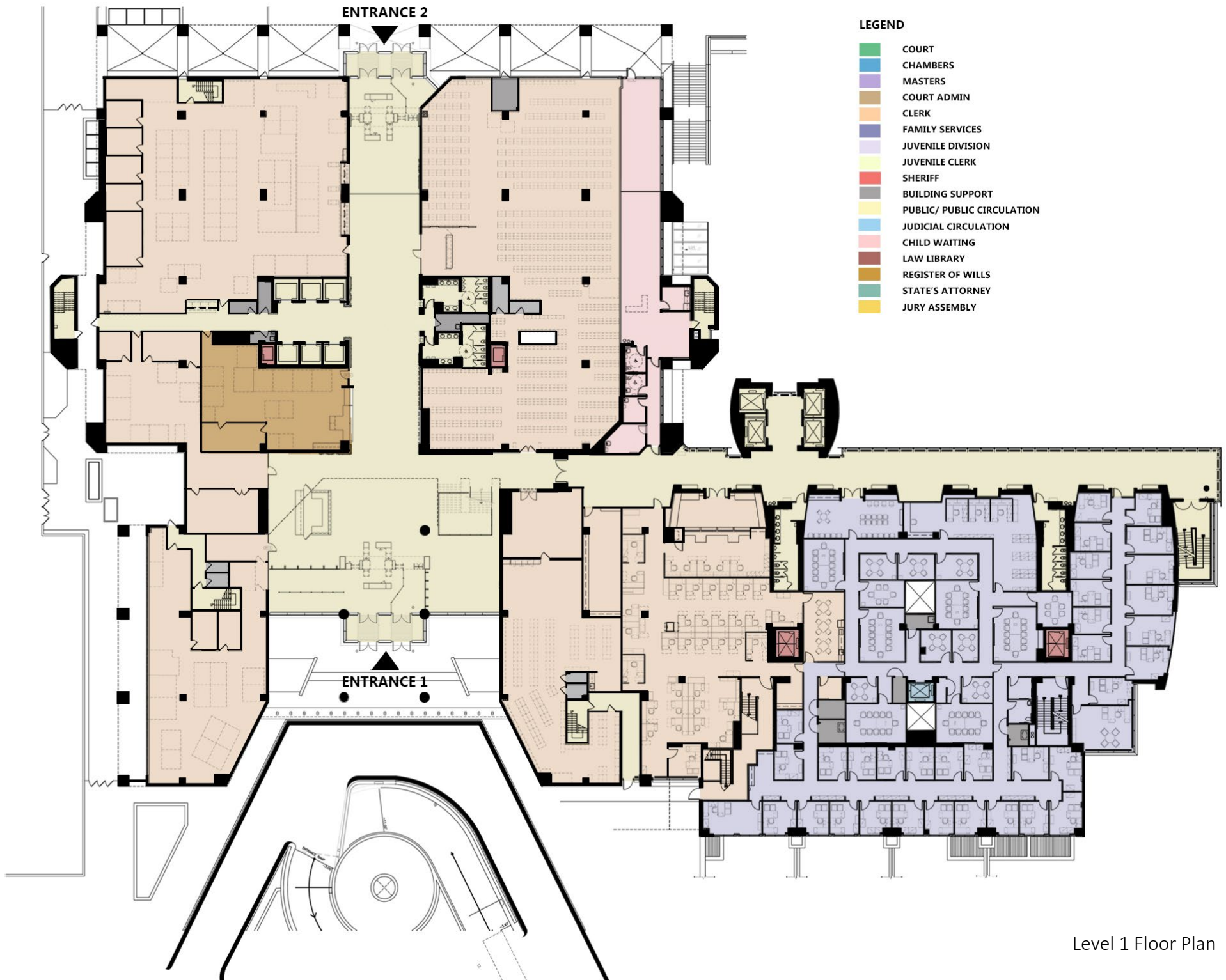
Jefferson Street

Sculpture

7'-0" Wide Tree Buffer Zone

8'-0" Wide Sidewalk

Future COB



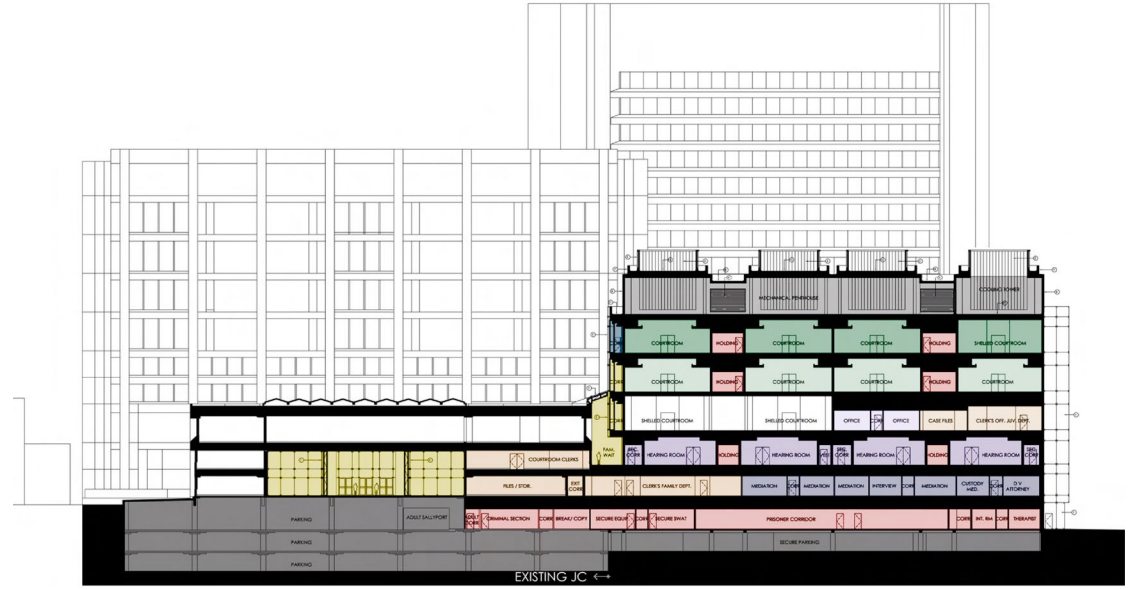
LEGEND

- COURT
- CHAMBERS
- MASTERS
- COURT ADMIN
- CLERK
- FAMILY SERVICES
- JUVENILE DIVISION
- JUVENILE CLERK
- SHERIFF
- BUILDING SUPPORT
- PUBLIC/ PUBLIC CIRCULATION
- JUDICIAL CIRCULATION
- CHILD WAITING
- LAW LIBRARY
- REGISTER OF WILLS
- STATE'S ATTORNEY
- JURY ASSEMBLY

Level 1 Floor Plan



Level 2 Floor Plan



North-South Section



Level 3 Floor Plan



East-West Section

