



Credit: Karl Connolly Photography

## LEXINGTON STREET GARAGE ENTRANCE UPGRADES

The Lexington Street Parking Garage serves students and faculty of the University of Maryland Founding Campus in Baltimore. As part of a systems upgrade and conversion of the garage to more-automated operation, we were retained by the University to design improvements to the exterior of the garage, principally to develop a protective canopy for the exterior self-use gate operators at vehicular entry and exit lanes.

The solution is an arrangement of four identical glass and stainless steel assemblies that operate as awning, visor, bollard and light fixture, simultaneously sheltering, shading, protecting, and illuminating.

Borrowing fabricating techniques and expertise from the petrochemical piping industry, a sinuous, heavy gauge frame is made by rolling stainless steel pipe in six bent sections, all to the same radius, then welding and finishing them to form a seamless one-piece support, which cantilevers from the ground to support patterned, translucent,

uplighted glass above. The canopies shield patrons from the rain and sun, protect parking equipment from vehicles, and light the roadway at night.

Conceived with the simple elegance of a paper clip and the utilitarian grace of nature, the canopies go beyond simply protecting people and equipment, and elevate the experience of entering and leaving the parking garage to an unexpected pleasure.

Location: Baltimore, Maryland  
Client: University of Maryland, Founding Campus  
Category: Institutional

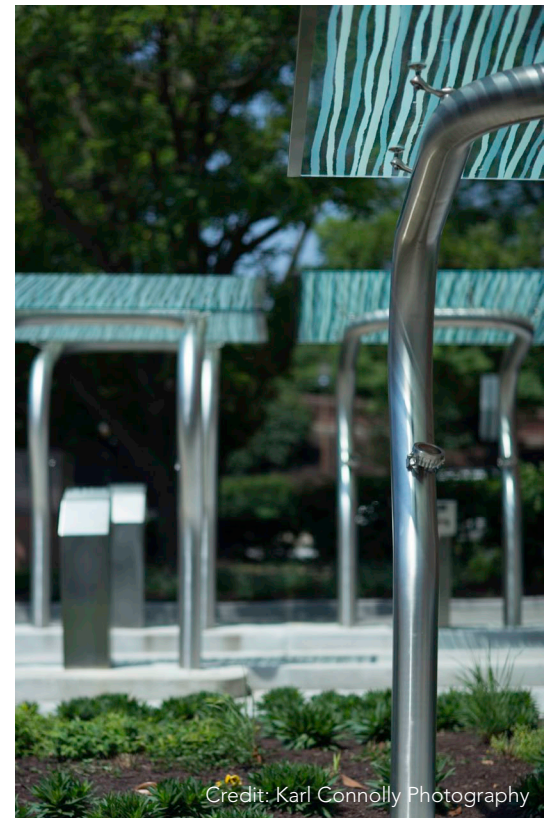




Credit: Karl Connolly Photography



Credit: Karl Connolly Photography



Credit: Karl Connolly Photography





Credit: Karl Connolly Photography



BEFORE



AFTER



Credit: Karl Connelly Photography



BEFORE



AFTER



Credit: Karl Connolly Photography



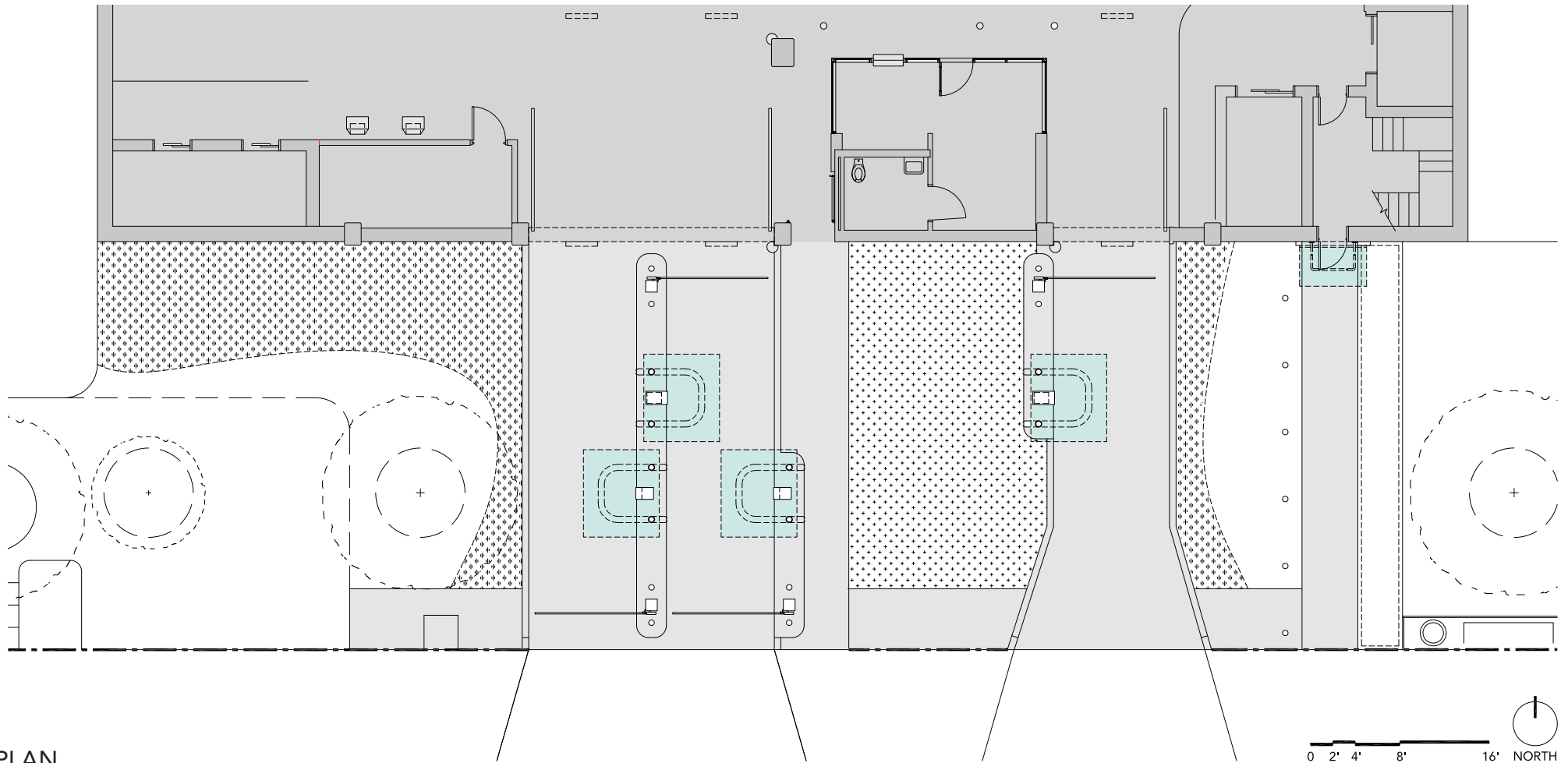
BEFORE



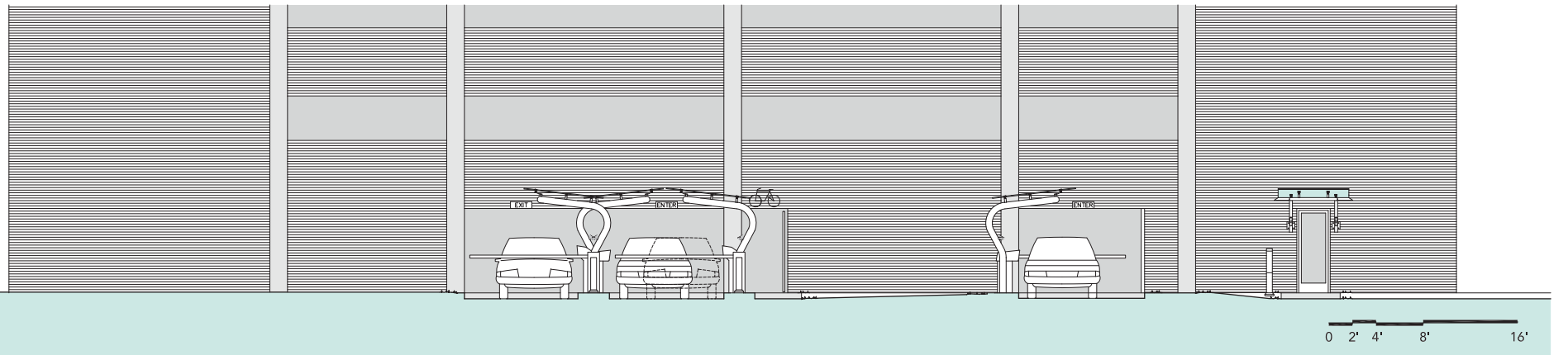
AFTER





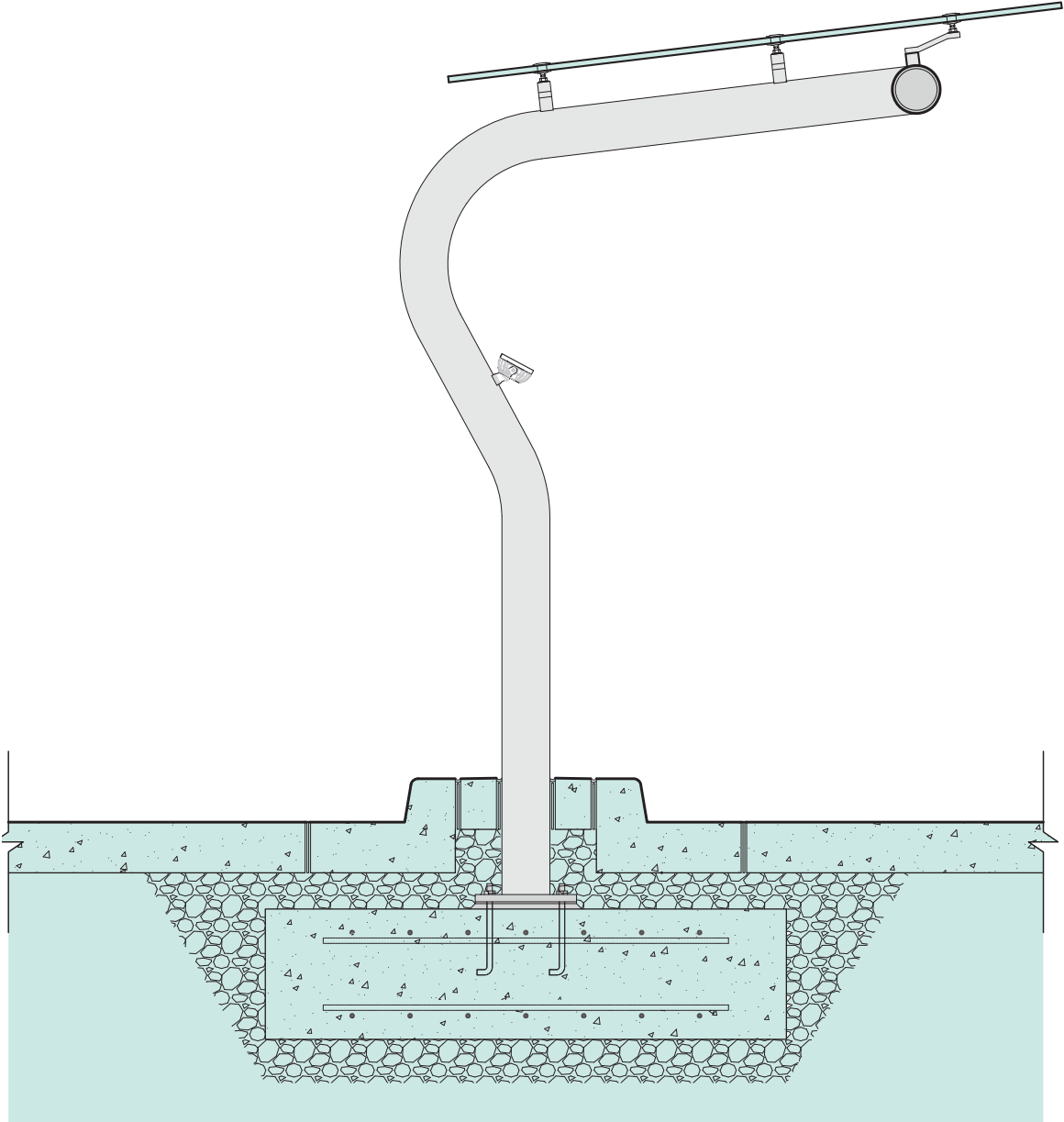


PLAN

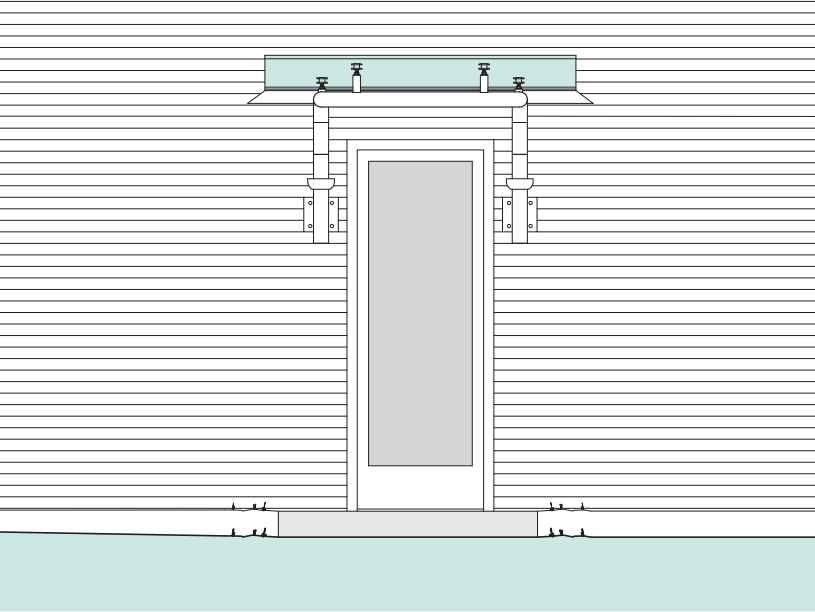


ELEVATION

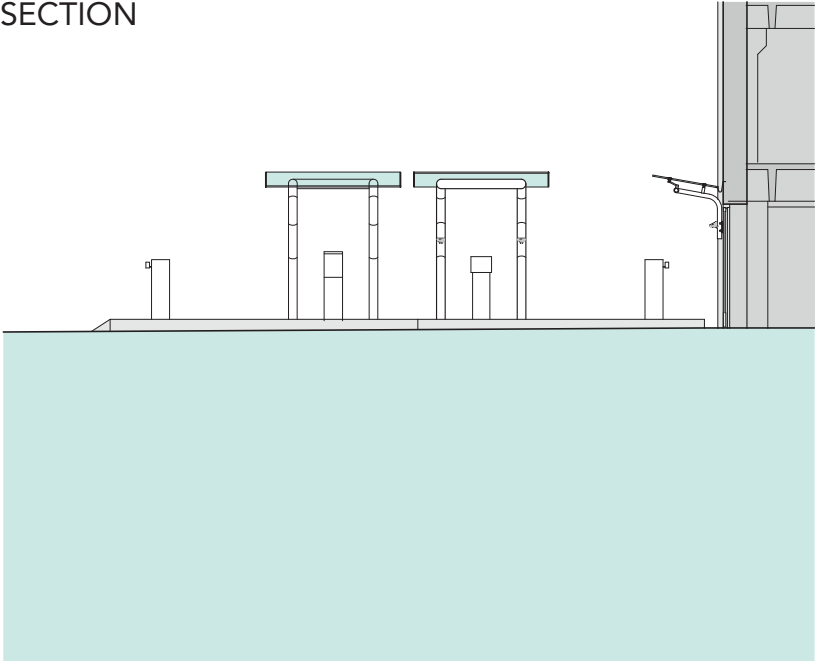
DETAIL



ELEVATION

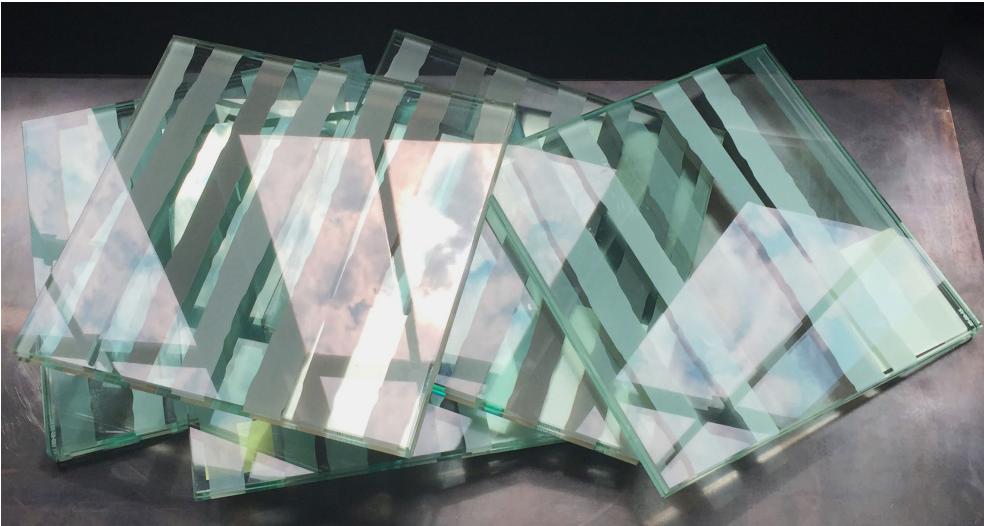
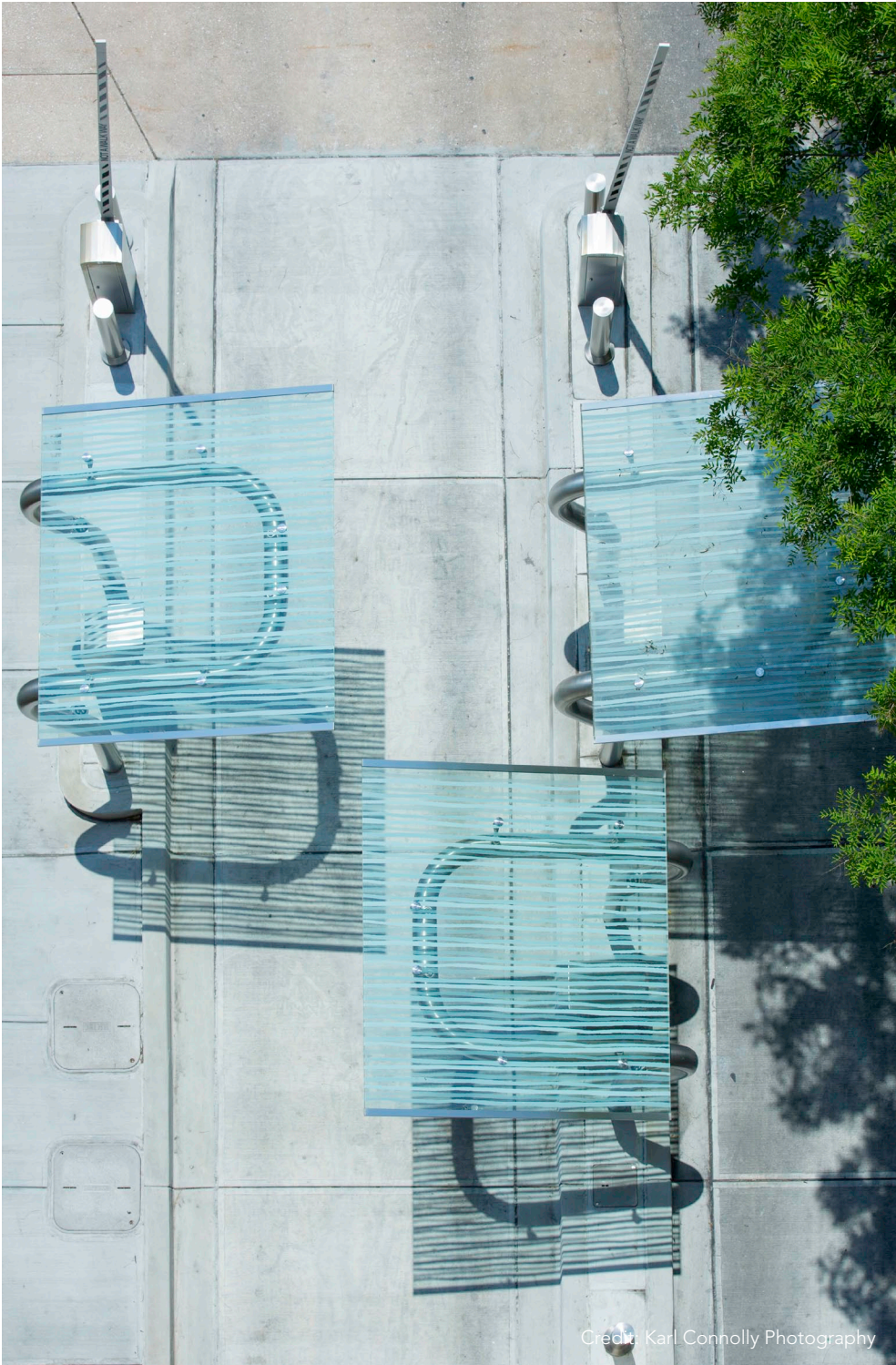


SECTION





GLASS





FRAME

