

OAK SPRINGS FARM HOUSE ADDITION

Location: Malvern, Pennsylvania
Client: Private
Category: Residential

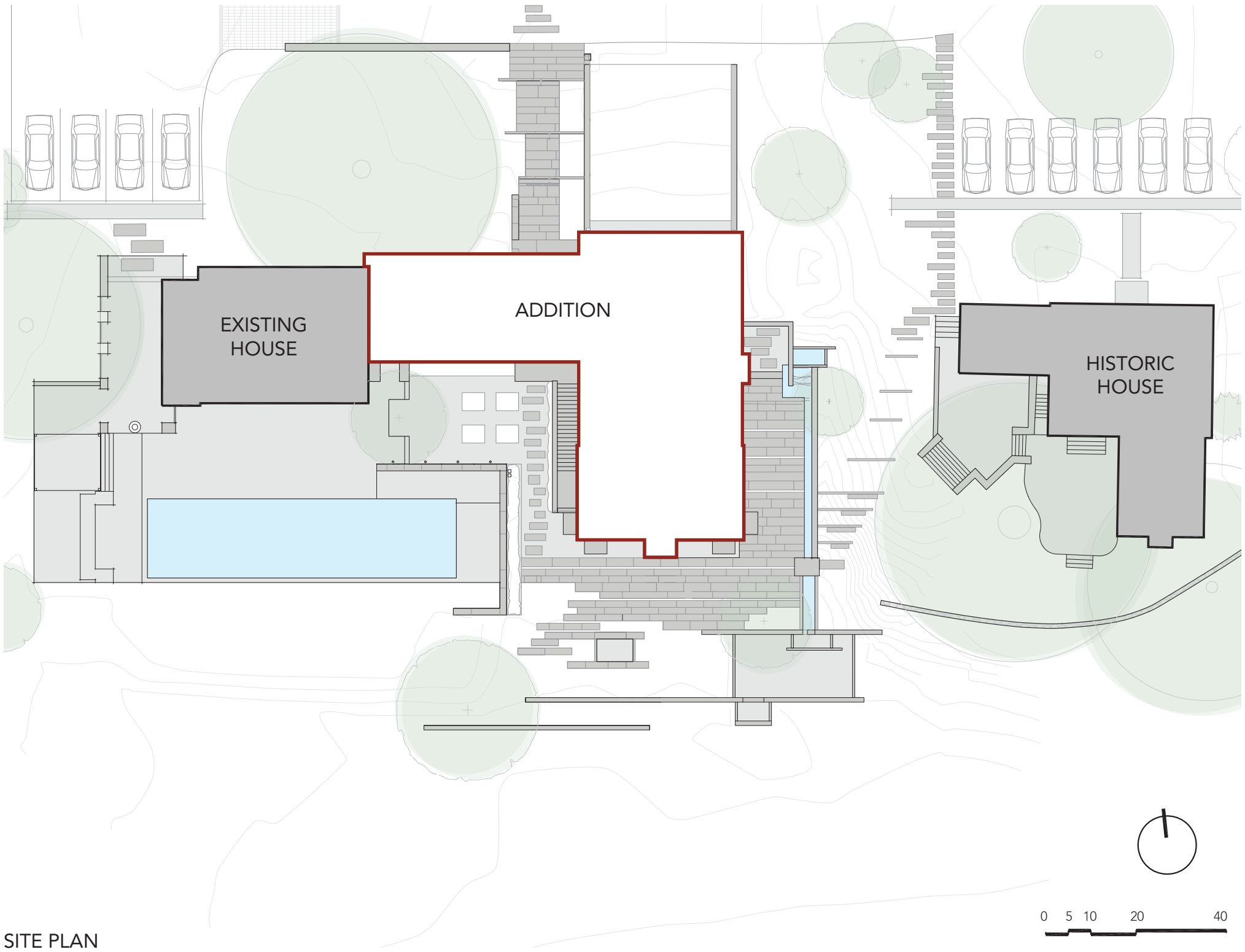
An addition to an existing timber-framed house on a large parcel of land in rural southeastern Pennsylvania, for an unusually active family whose life centers around athletic and recreational engagement with the land. The house is generous and open, ample and accepting of use in any number of different and shifting ways, its scale and connectedness set by the family's expansive and energetic life. In quiet counterbalance to the family's energy and constant motion, the house is a deeply considered exercise in the application of old-school craft and local materials, grounded in the still-vital tradition of mortise-and-tenon heavy-timber joinery practiced in this part of the country, and the extraordinary talents of local metalworkers, stone masons, plasterers, cabinetmakers, door builders, tile and stone setters, and painters. It is a house about both the extraordinary family who live in it, and the very special people who built it.



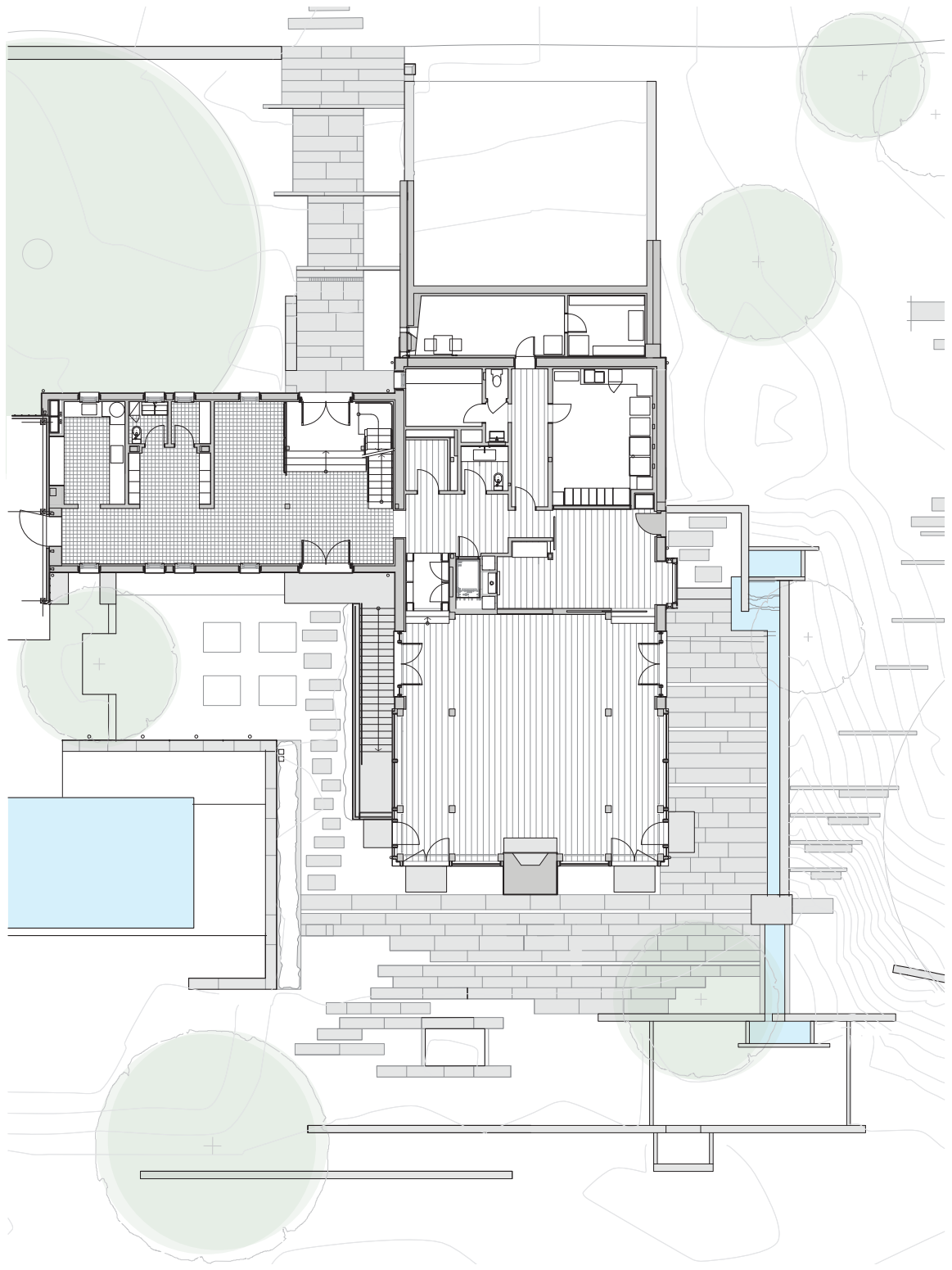
Credit: Karl Connolly Photography



Credit: Karl Connolly Photography



SITE PLAN



GROUND FLOOR PLAN





Credit: Karl Connolly Photography



Credit: Karl Connolly Photography



Credit: Karl Connolly Photography



Credit: Karl Connolly Photography





Credit: Karl Connolly Photography



Credit: Karl Connolly Photography



Credit: Karl Connolly Photography





Credit: Karl Connolly Photography



Credit: Karl Connolly Photography



Credit: Karl Connolly Photography