



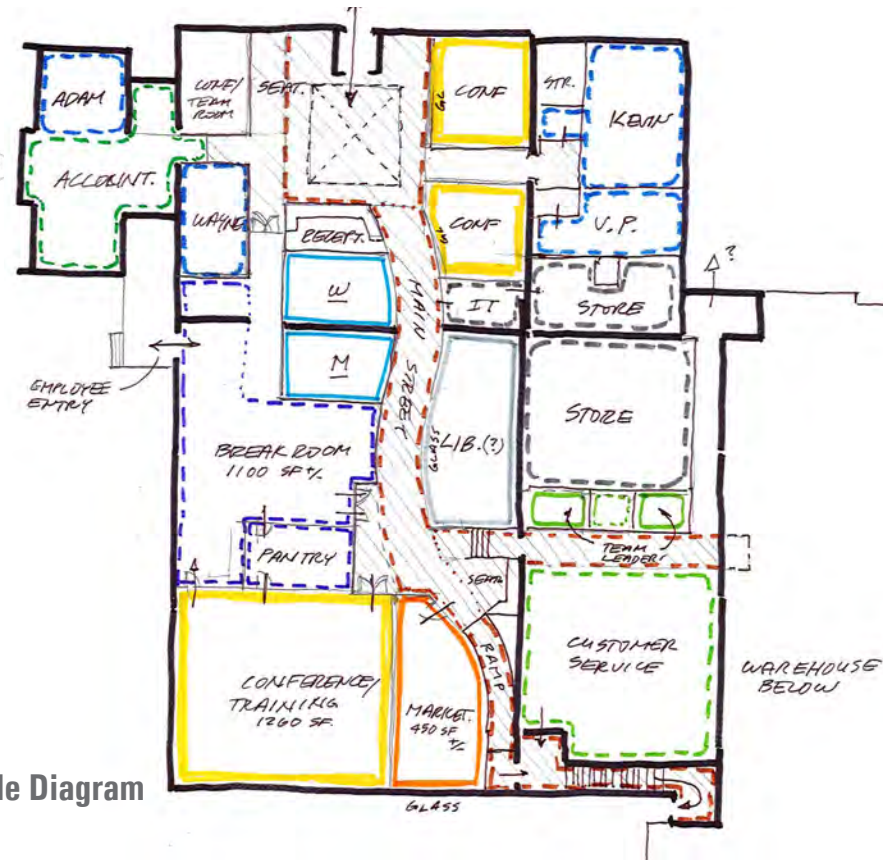
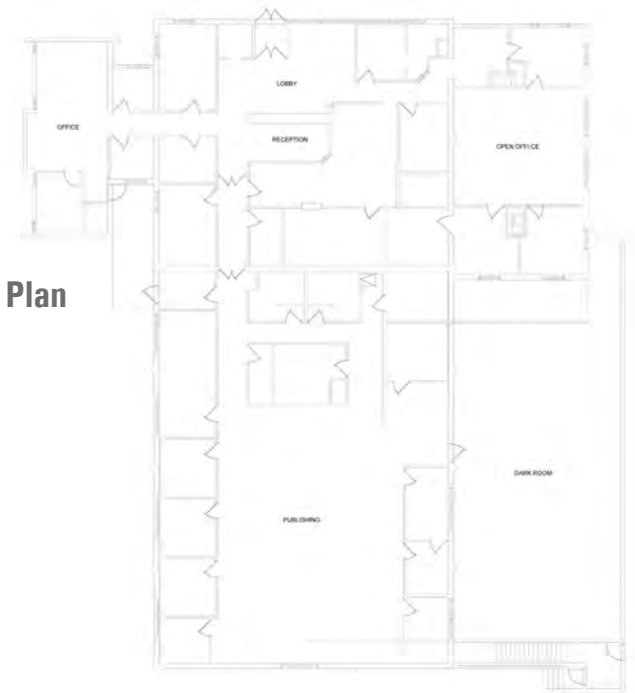
Spartan Surfaces, a rapidly-growing commercial flooring distributor, wanted to stay local. Kevin Jablon, owner and CEO, wanted to live and work in the same community. As a result, Spartan Surfaces has a state-of-the-art headquarters in the traditionally brick and boxy Town of Bel Air. The design consisted of the redevelopment of a notable building, previously used as the offices and printing for the local newspaper, The Aegis. Spartan Surfaces continued the local feel by hiring local design consultants and general contractor to complete the project.

The design served to highlight and store Spartan Surfaces products and branding and create a collaborative work space. "Spartan Green" is incorporated throughout the building in paint colors, exterior tiles and furniture. Their commercial flooring products, many styles fabricated from recycled materials, are featured throughout the space and stored in the warehouse. The collaborative work space is exhibited by the multiple open-area work spaces and conference rooms. A curved "Main Street" corridor was created to connect multiple departments and sales areas. The kitchen and breakroom allow employees to socialize on lunch hours to bolster employee morale and teambuilding.

The original Aegis building was 50 years old with out-of-date mechanical systems. The floor plan was updated to reflect Spartan Surfaces' goals for a collaborative work space. The mechanical systems were updated to meet EER ratings of 11.5 or better. The lighting was designed with new energy efficient LED pendants, troffers and strip fixtures. Lighting controls included wall mounted vacancy sensors for offices and smaller rooms and ceiling mounted occupancy sensors for larger, open areas. The project was designed and completed with a power density of only 0.67 per watts per square foot.



Existing Floor Plan



Programming Bubble Diagram

CONTEXT

BEFORE



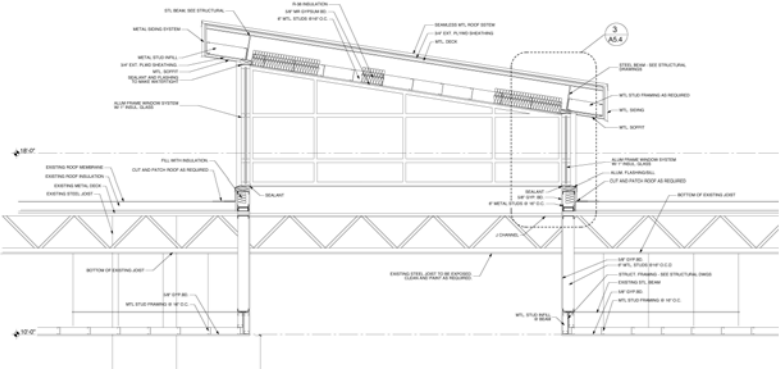
LOBBY



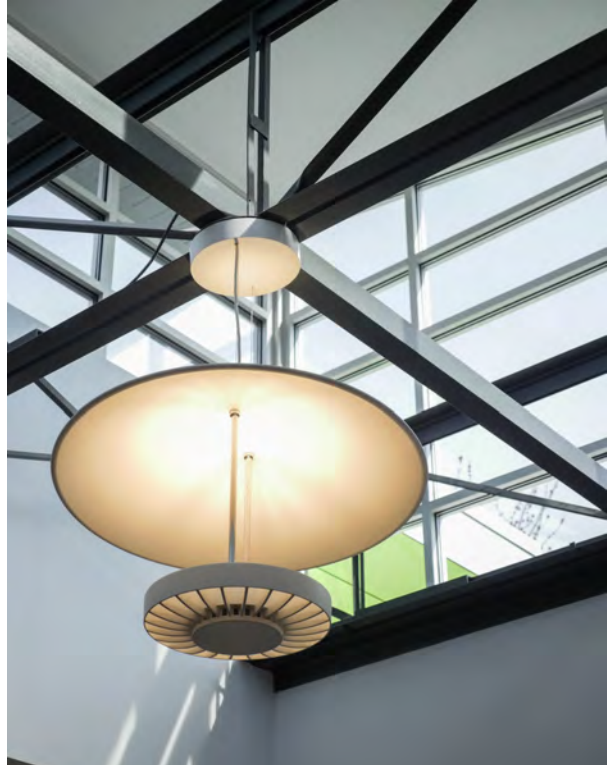
BEFORE

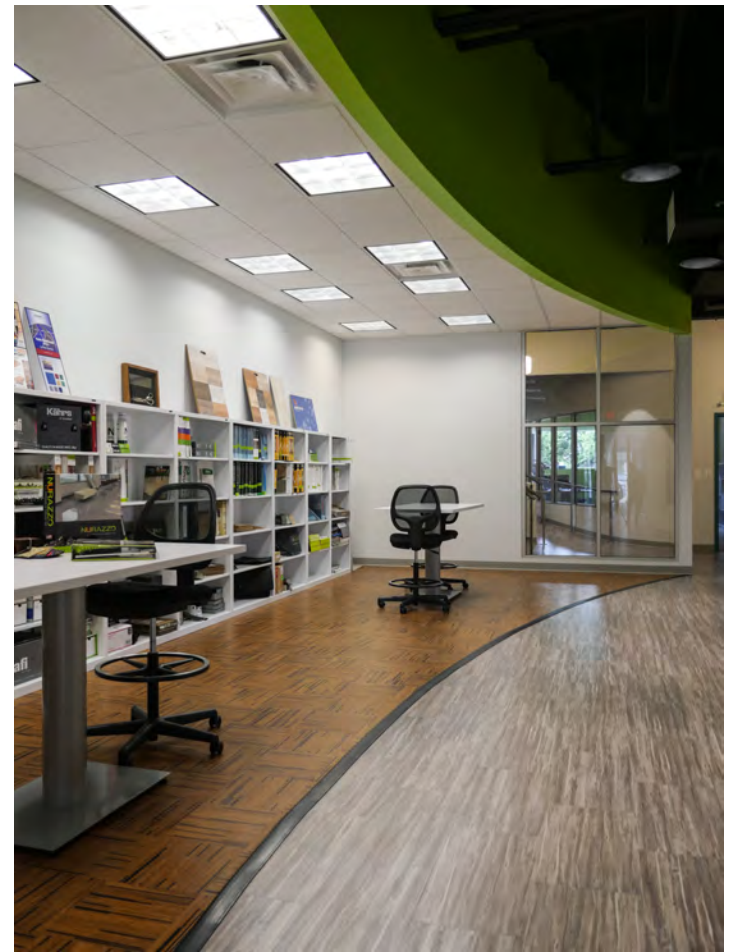


GLASS MONITOR



Natural light is a constant through the redesigned building. The glass monitor and glass conference rooms at the front of the building flood the lobby with light. Construction of this structure proved to be extremely difficult due to the accuracy necessary during installation. Intense coordination was required between the demolition, steel, and roof contractors to ensure that the enclosure was installed and watertight as quickly as possible.





The curved corridor known as "Main Street" through the building quickly moves clients from the lobby to the small library and sales area.



MAIN STREET



The apex of collaborative workspace is the large conference room in the back of the building. It is connected to the kitchen with an operable segmented wall for privacy. Spartan Surfaces held its nation-wide sales meeting in the room, as well as local organizations have used the space for seminars and meetings.



BEFORE PHOTO OF ABOVE CONFERENCE ROOM



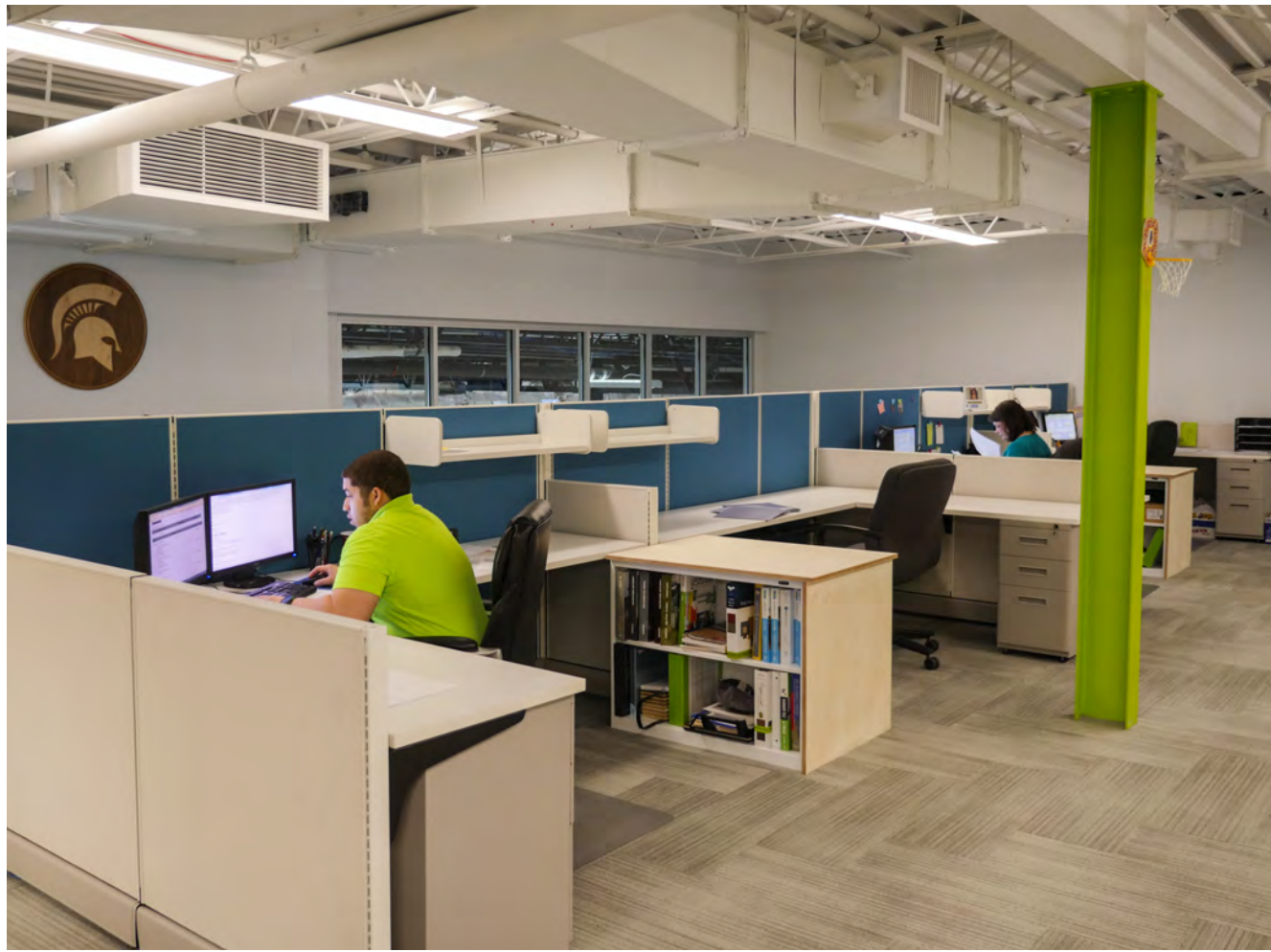
CONFERENCE ROOMS



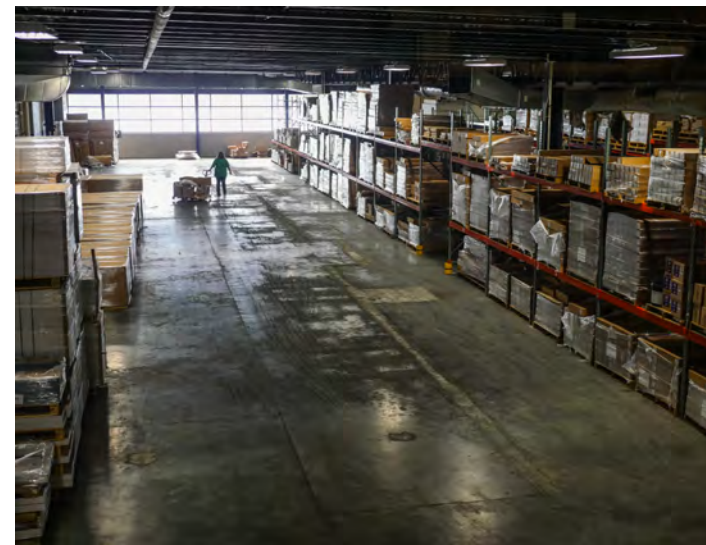
BEFORE



KITCHEN & BREAKROOM



BEFORE PHOTO OF CUSTOMER SERVICE AREA



WAREHOUSE & STORAGE AREA

CUSTOMER SERVICE

