

Modernization of Historic Campus Brings Monumental Distinction to DC School

Washington, DC



Certified LEED® Gold

Project Name / Location

Francis L. Cardozo Education Campus /
Washington, DC

Category

K-12 Education

Introduction

Renovation of a historic 300,000 sf high school.

Description

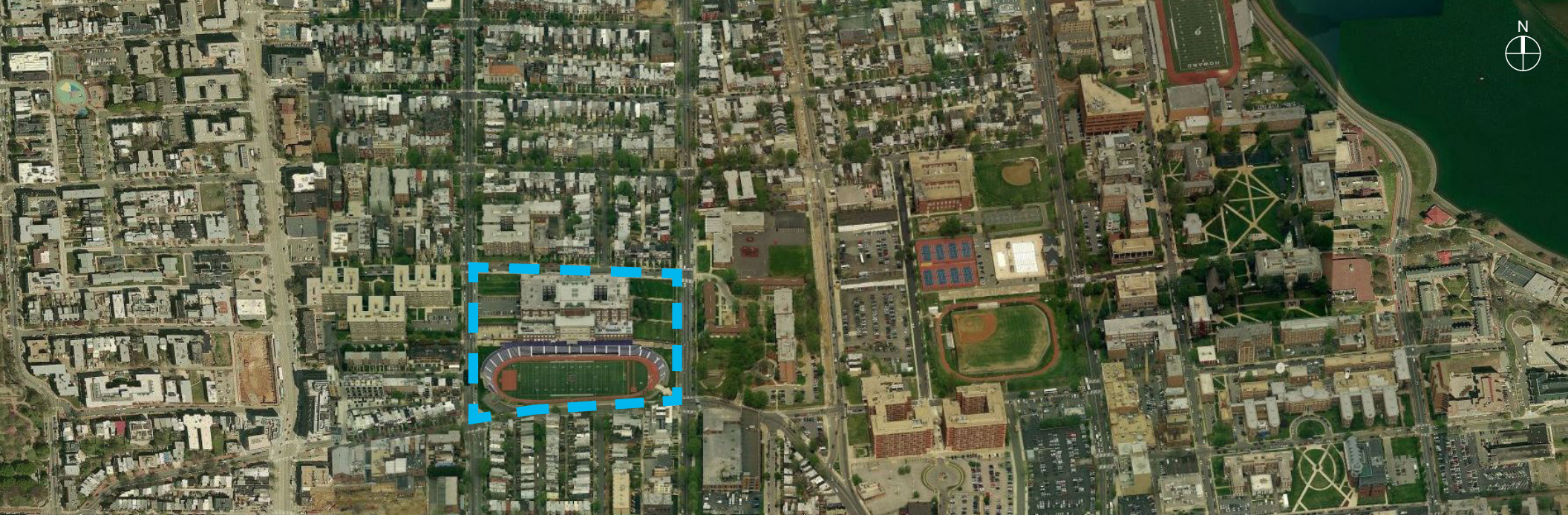
The design team was commissioned to modernize the 300,000 sf facility, reconfiguring the Francis L. Cardozo Education Campus as a high school and middle school combined. The building has operated as a high school since 1916 and was added to the *DC Inventory of Historic Sites* in 1991 and to the *National Register of Historic Places* in 1993. The design solution exceeded client goals by returning the building to its monumental distinction, providing 21st century learning environments, resolving internal way finding issues, addressing undersized program elements, and creating inviting public spaces for the students and the community.

The historic exterior and interior spaces were restored with careful attention to the

preservation of details and craftsmanship such as stone carvings, decorative tile work, plaster ceilings, and wood millwork. The lobby, media center, auditorium, and large group lecture lab were modernized as well. These preservation efforts were recognized with a *Historic Preservation Award of Excellence* by the *District of Columbia Historic Preservation Office/Office of Planning*.

A new stair was added to the center of the building to address way finding issues by creating a central communications hub to provide direct access from the main entrance to major community use spaces such as the auditorium, media center, large group lecture lab, and cafeteria. To resolve undersized physical education program elements, the design included a 47,000 sf regulation gymnasium addition, which is partially recessed in deference to the historic structure and to maintain the community's sight lines to the DC skyline.

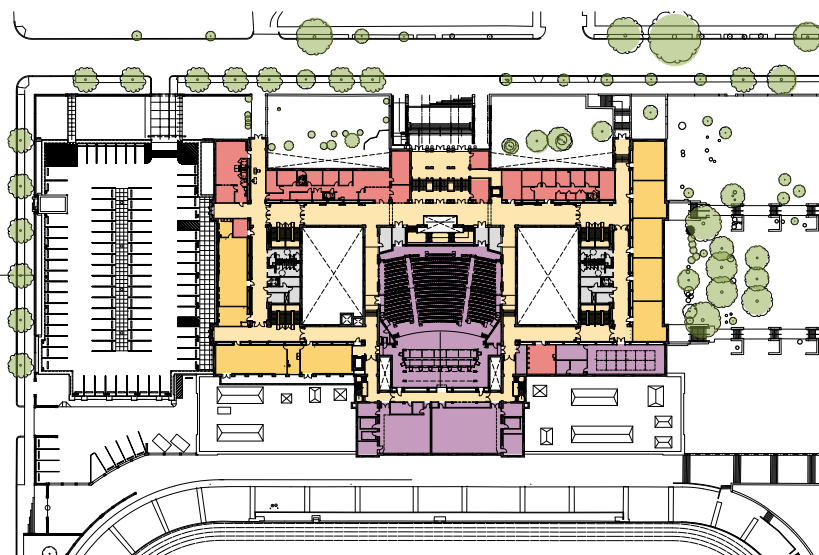
The LEED Gold renovation includes energy-efficient elements, including mechanical, plumbing and electrical systems, and a green-roof to aid with storm water management.



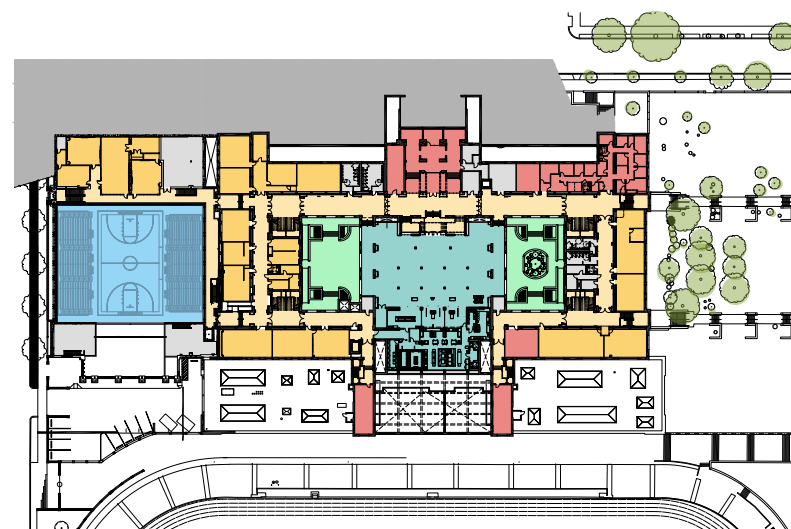
Vicinity Map

Legend

- Classrooms
- Administration
- Gymnasium
- Building Services
- Cafeteria
- Atria
- Arts | Music
- Media Center
- Circulation



First Floor



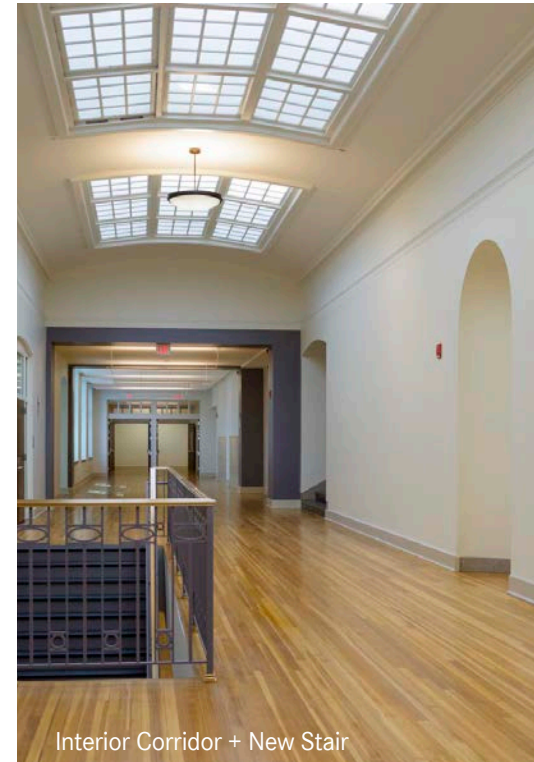
Courtyard Floor



New Athletic Track + Field



Prior Conditions — Interior Corridor

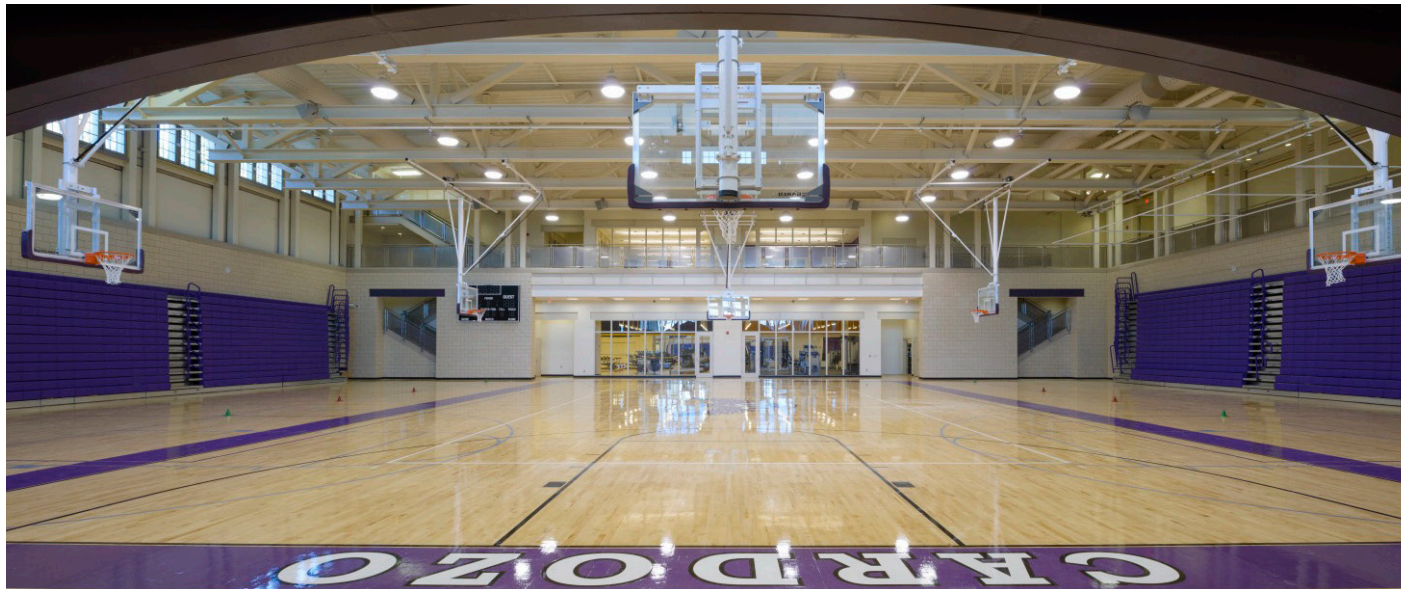


Interior Corridor + New Stair

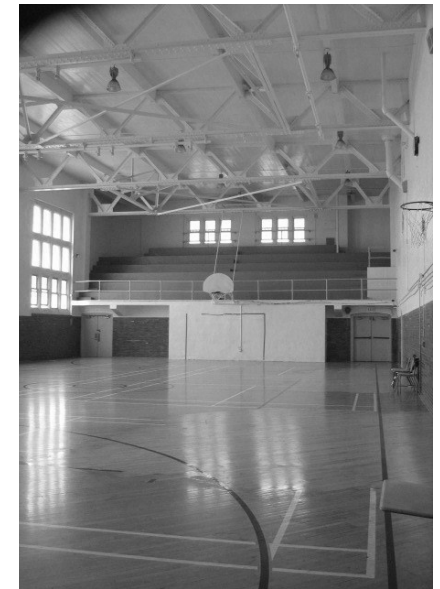
The new regulation gymnasium fosters school identity and pride. Constructed partially below grade to allow for parking on the roof, the addition is lowered in deference to the historic structure and to maintain the community's sight lines to the DC skyline.



Gymnasium Exterior



Gymnasium Interior



Prior Conditions – Gymnasium



Entrance to Skylit Atrium



Prior Conditions



Skylit Atrium



Prior Conditions



Cafeteria



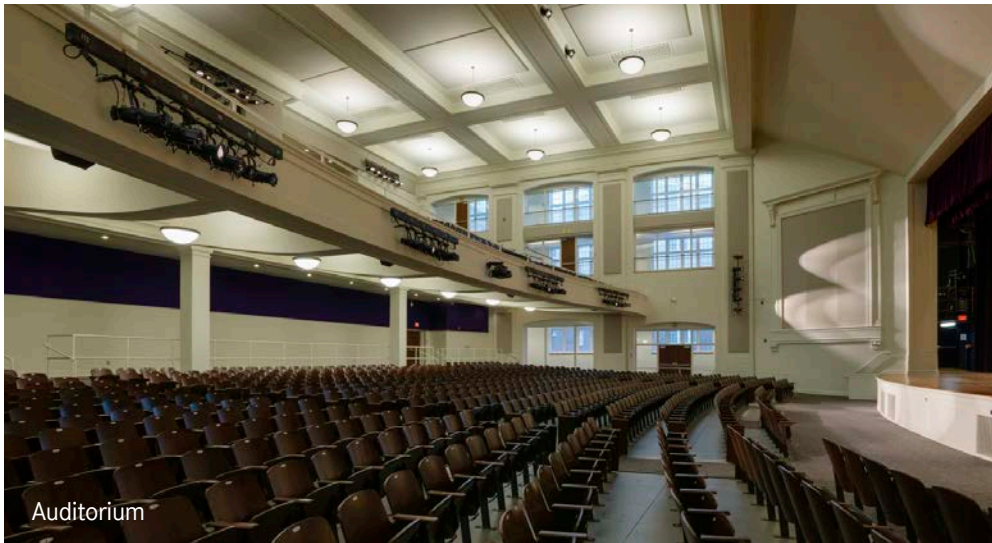
Prior Conditions



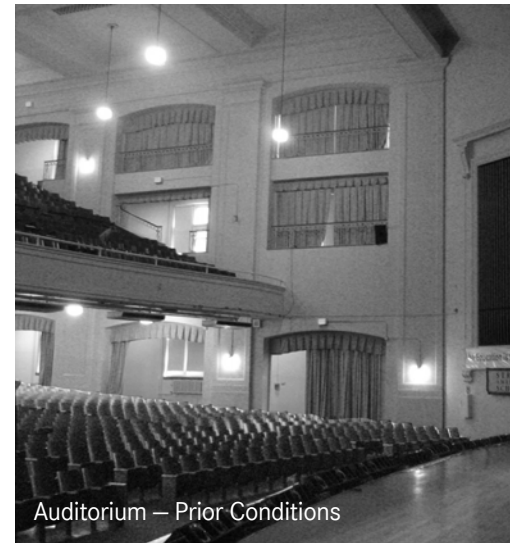
Science Classroom



Auditorium



Auditorium



Auditorium – Prior Conditions



Restored historic architectural elements



Historic Façade